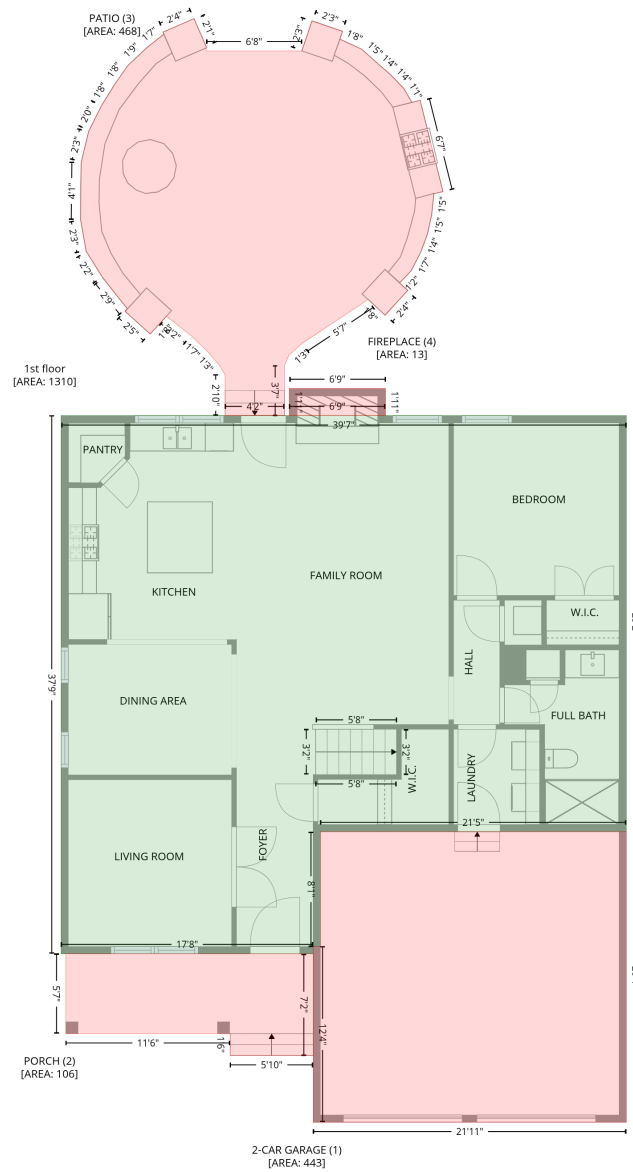


364 Springtime Fields Lane, Wake Forest, Wake County, North Carolina, United States, 27587

Gross Living Area: 2620 sq. ft

Level 1



Space	Area (sq. ft)	Calculation
1st floor (Living area)	1310	Coordinate Polygon Area Algorithm using inches $-((565.4 + 565.4) * (418 - 768.1) + (565.4 + 308.3) * (768.1 - 768.1) + (308.3 + 308.3) * (768.1 - 864.9) + (308.3 + 302.3) * (864.9 - 864.9) + (302.3 + 302.3) * (864.9 - 870.9) + (302.3 + 90.5) * (870.9 - 870.9) + (90.5 + 90.5) * (870.9 - 418) + (90.5 + 565.4) * (418 - 418)) * 0.5 * 0.00694$
2-CAR GARAGE (Non-living area)	443	$-((565.4 + 565.4) * (768.1 - 1012.6) + (565.4 + 302.3) * (1012.6 - 1012.6) + (302.3 + 302.3) * (1012.6 - 864.9) + (302.3 + 308.3) * (864.9 - 864.9) + (308.3 + 308.3) * (864.9 - 768.1) + (308.3 + 565.4) * (768.1 - 768.1)) * 0.5 * 0.00694$

364 Springtime Fields Lane, Wake Forest, Wake County, North Carolina, United States, 27587

Gross Living Area: 2620 sq. ft

Level 1

Space	Area (sq. ft)	Calculation <small>Coordinate Polygon Area Algorithm using inches</small>
PORCH (Non-living area)	106	$-\left((302.3 + 302.3) * (870.9 - 956.5) + (302.3 + 232.5) * (956.5 - 956.5) + (232.5 + 232.5) * (956.5 - 938.1) + (232.5 + 94.5) * (938.1 - 938.1) + (94.5 + 94.5) * (938.1 - 870.9) + (94.5 + 302.3) * (870.9 - 870.9)\right) * 0.5 * 0.00694$
PATIO (Non-living area)	468	$-\left((202.1 + 212.3) * (83.8 - 107.1) + (212.3 + 212.3) * (107.1 - 111) + (212.3 + 292.7) * (111 - 111) + (292.7 + 301.3) * (111 - 85.7) + (301.3 + 326.9) * (85.7 - 94.5) + (326.9 + 324.8) * (94.5 - 101.1) + (324.8 + 342.9) * (101.1 - 109.5) + (342.9 + 355.4) * (109.5 - 120.7) + (355.4 + 367.5) * (120.7 - 131.2) + (367.5 + 378.5) * (131.2 - 142.7) + (378.5 + 385.1) * (142.7 - 154.3) + (385.1 + 392.1) * (154.3 - 152.6) + (392.1 + 411.3) * (152.6 - 229.4) + (411.3 + 403.7) * (229.4 - 231) + (403.7 + 401.9) * (231 - 247.9) + (401.9 + 398.3) * (247.9 - 264.9) + (398.3 + 393) * (264.9 - 279.6) + (393 + 384.6) * (279.6 - 296.1) + (384.6 + 375) * (296.1 - 306.1) + (375 + 381.7) * (306.1 - 312.6) + (381.7 + 362.8) * (312.6 - 333.7) + (362.8 + 348.8) * (333.7 - 320.1) + (348.8 + 293.1) * (320.1 - 357) + (293.1 + 281.9) * (357 - 367) + (281.9 + 278.2) * (367 - 375.4) + (278.2 + 278.2) * (375.4 - 418) + (278.2 + 228.2) * (418 - 418) + (228.2 + 228.2) * (418 - 383.5) + (228.2 + 223.4) * (383.5 - 375.3) + (223.4 + 213.3) * (375.3 - 363.8) + (213.3 + 199.8) * (363.8 - 350.8) + (199.8 + 179.1) * (350.8 - 334.4) + (179.1 + 165.4) * (334.4 - 349.2) + (165.4 + 144) * (349.2 - 329.8) + (144 + 146.1) * (329.8 - 328.1) + (146.1 + 125.5) * (328.1 - 302) + (125.5 + 111.5) * (302 - 279.7) + (111.5 + 106.8) * (279.7 - 253.2) + (106.8 + 107.4) * (253.2 - 204.6) + (107.4 + 113.6) * (204.6 - 178.7) + (113.6 + 124.5) * (178.7 - 156.9) + (124.5 + 135.1) * (156.9 - 139.6) + (135.1 + 147) * (139.6 - 123.1) + (147 + 162.2) * (123.1 - 108.5) + (162.2 + 176.7) * (108.5 - 97) + (176.7 + 176.1) * (97 - 95.1) + (176.1 + 202.1) * (95.1 - 83.8)\right) * 0.5 * 0.00694$
FIREPLACE (Non-living area)	13	$-\left((363 + 363) * (395.2 - 418) + (363 + 282.2) * (418 - 418) + (282.2 + 282.2) * (418 - 395.2) + (282.2 + 363) * (395.2 - 395.2)\right) * 0.5 * 0.00694$

364 Springtime Fields Lane, Wake Forest, Wake County, North Carolina, United States, 27587

Gross Living Area: 2620 sq. ft

Level 2

2nd floor
[AREA: 1310]



Space	Area (sq. ft)	Calculation <small>Coordinate Polygon Area Algorithm using inches</small>
2nd floor (Living area)	1310	$-((565.4 + 565.4) * (418 - 768.1) + (565.4 + 308.3) * (768.1 - 768.1) + (308.3 + 308.3) * (768.1 - 870.9) + (308.3 + 90.5) * (870.9 - 870.9) + (90.5 + 90.5) * (870.9 - 418) + (90.5 + 565.4) * (418 - 418)) * 0.5 * 0.00694$