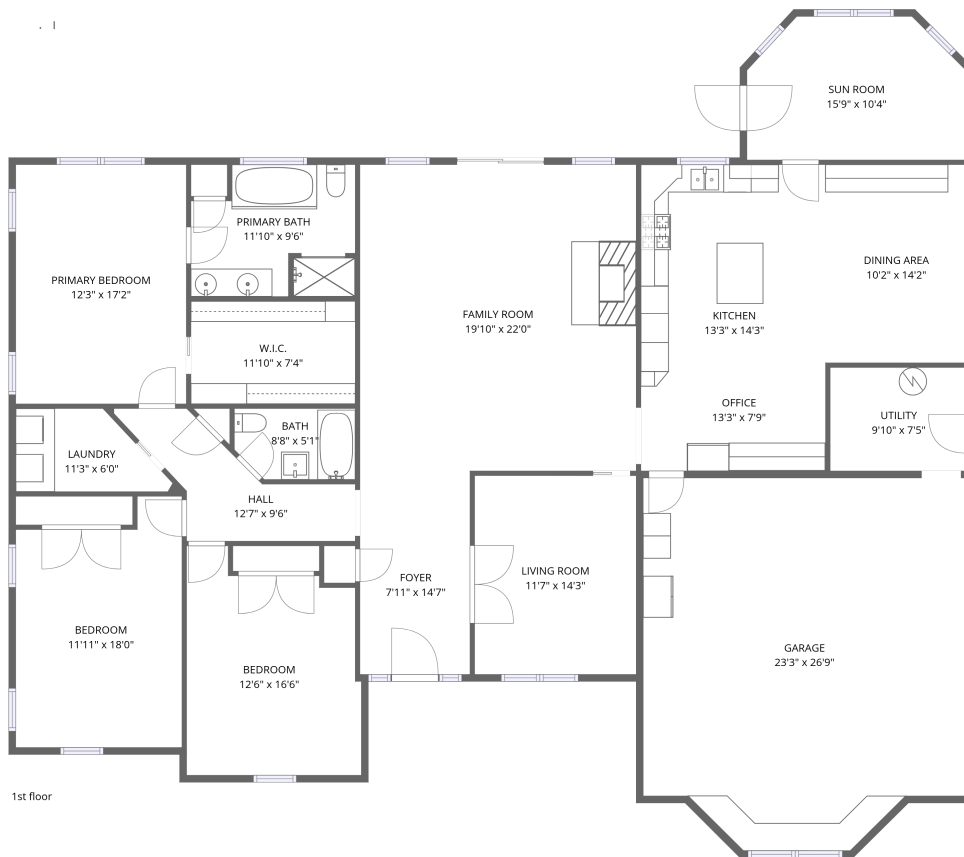


Home data report

495 Bushee Road, Swansea, Bristol County, Massachusetts,
United States, 02777

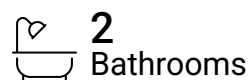
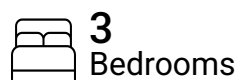


Total Area: 2389 sq. ft

1st Floor: 2389 sq. ft

Excluded: Utility 73 sq. ft, Garage 577 sq. ft, Walls: 150 sq. ft

Property summary



Home data report

495 Bushee Road, Swansea, Bristol County, Massachusetts, United States, 02777



Room dimensions

Floor 1

Total:2389sqft Excluded: 650sqft

#		Dimensions	sqft	Counted as living area
1	Kitchen	13'3" x 14'3"	189 sq. ft	Yes
2	Sun Room	15'9" x 10'4"	148 sq. ft	Yes
3	Hall	12'7" x 9'6"	81 sq. ft	Yes
4	Living Room	11'7" x 14'3"	166 sq. ft	Yes
5	Primary Bedroom	12'3" x 17'2"	210 sq. ft	Yes
6	Office	13'3" x 7'9"	103 sq. ft	Yes
7	Dining Area	10'2" x 14'2"	145 sq. ft	Yes
8	Bedroom	12'6" x 16'6"	181 sq. ft	Yes
9	Laundry	11'3" x 6'0"	54 sq. ft	Yes
10	Bath	8'8" x 5'1"	42 sq. ft	Yes
11	Family Room	19'10" x 22'0"	436 sq. ft	Yes

Scan captured on Mon, 25 Aug 2025 16:27:03 GMT

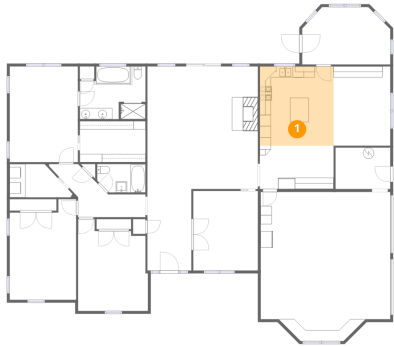
FLOOR PLAN CREATED BY CUBICASA APP. MEASUREMENTS DEEMED HIGHLY RELIABLE BUT NOT GUARANTEED.

Home data report

**495 Bushee Road, Swansea, Bristol County, Massachusetts,
United States, 02777**

#		Dimensions	sqft	Counted as living area
12	Foyer	7'11" x 14'7"	115 sq. ft	Yes
13	Utility	9'10" x 7'5"	73 sq. ft	No
14	Garage	23'3" x 26'9"	577 sq. ft	No
15	Bedroom	11'11" x 18'0"	194 sq. ft	Yes
16	Primary Bath	11'10" x 9'6"	103 sq. ft	Yes
17	W.I.C.	11'10" x 7'4"	87 sq. ft	Yes

1 Floor 1 - Kitchen



Dimensions: 13'3" x 14'3"
Area: 189 sq. ft
Counted as living area: Yes

Heated: Yes
Finished: Yes
Enclosed: Yes
Contiguous: Yes
Permitted: Yes
Wet space: No
Addition: No
Conversion: No

2 Floor 1 - Sun Room



Dimensions: 15'9" x 10'4"
Area: 148 sq. ft
Counted as living area: Yes

Heated: Yes
Finished: Yes
Enclosed: Yes
Contiguous: Yes
Permitted: Yes
Wet space: No
Addition: No
Conversion: No

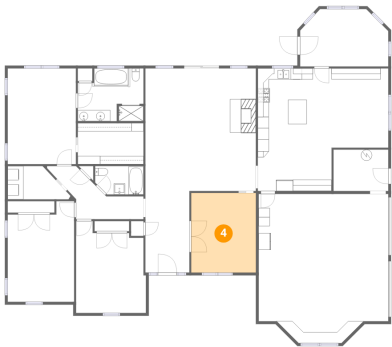
3 Floor 1 - Hall



Dimensions: 12'7" x 9'6"
Area: 81 sq. ft
Counted as living area: Yes

Heated: Yes
Finished: Yes
Enclosed: Yes
Contiguous: Yes
Permitted: Yes
Wet space: No
Addition: No
Conversion: No

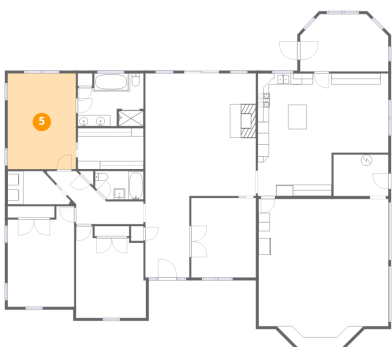
4 Floor 1 - Living Room



Dimensions: 11'7" x 14'3"
Area: 166 sq. ft
Counted as living area: Yes

Heated: Yes
Finished: Yes
Enclosed: Yes
Contiguous: Yes
Permitted: Yes
Wet space: No
Addition: No
Conversion: No

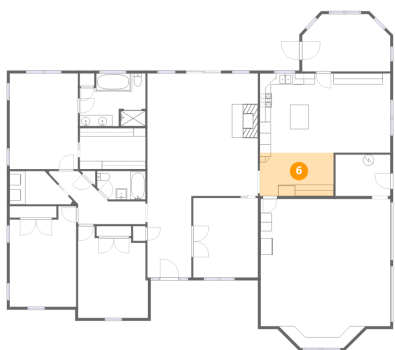
5 Floor 1 - Primary Bedroom



Dimensions: 12'3" x 17'2"
Area: 210 sq. ft
Counted as living area: Yes

Heated: Yes
Finished: Yes
Enclosed: Yes
Contiguous: Yes
Permitted: Yes
Wet space: No
Addition: No
Conversion: No

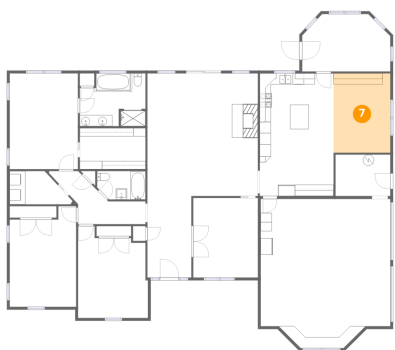
6 Floor 1 - Office



Dimensions: 13'3" x 7'9"
Area: 103 sq. ft
Counted as living area: Yes

Heated: Yes
Finished: Yes
Enclosed: Yes
Contiguous: Yes
Permitted: Yes
Wet space: No
Addition: No
Conversion: No

7 Floor 1 - Dining Area



Dimensions: 10'2" x 14'2"
Area: 145 sq. ft
Counted as living area: Yes

Heated: Yes
Finished: Yes
Enclosed: Yes
Contiguous: Yes
Permitted: Yes
Wet space: No
Addition: No
Conversion: No

8 Floor 1 - Bedroom



Dimensions: 12'6" x 16'6"
Area: 181 sq. ft
Counted as living area: Yes

Heated: Yes
Finished: Yes
Enclosed: Yes
Contiguous: Yes
Permitted: Yes
Wet space: No
Addition: No
Conversion: No

9 Floor 1 - Laundry



Dimensions: 11'3" x 6'0"
Area: 54 sq. ft
Counted as living area: Yes

Heated: Yes
Finished: Yes
Enclosed: Yes
Contiguous: Yes
Permitted: Yes
Wet space: No
Addition: No
Conversion: No

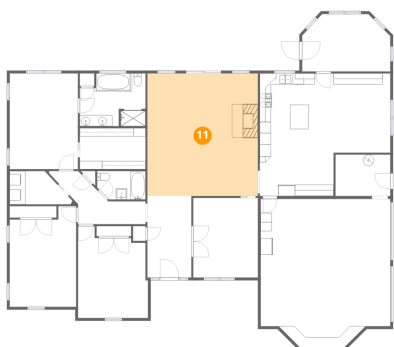
10 Floor 1 - Bath



Dimensions: 8'8" x 5'1"
Area: 42 sq. ft
Counted as living area: Yes

Heated: Yes
Finished: Yes
Enclosed: Yes
Contiguous: Yes
Permitted: Yes
Wet space: Yes
Addition: No
Conversion: No

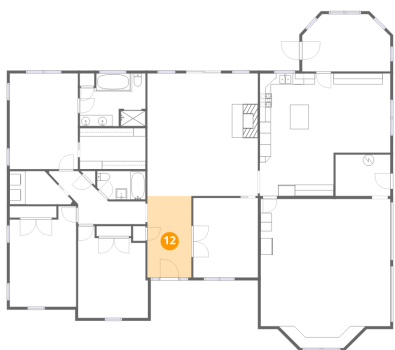
11 Floor 1 - Family Room



Dimensions: 19'10" x 22'0"
Area: 436 sq. ft
Counted as living area: Yes

Heated: Yes
Finished: Yes
Enclosed: Yes
Contiguous: Yes
Permitted: Yes
Wet space: No
Addition: No
Conversion: No

12 Floor 1 - Foyer



Dimensions: 7'11" x 14'7"
Area: 115 sq. ft
Counted as living area: Yes

Heated: Yes
Finished: Yes
Enclosed: Yes
Contiguous: Yes
Permitted: Yes
Wet space: No
Addition: No
Conversion: No

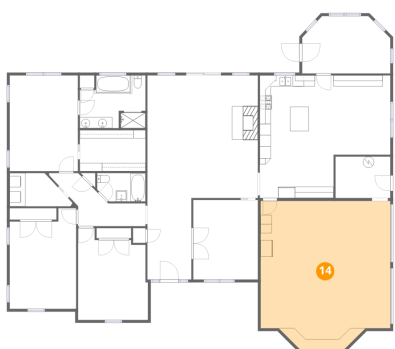
13 Floor 1 - Utility



Dimensions: 9'10" x 7'5"
Area: 73 sq. ft
Counted as living area: No

Heated: Yes
Finished: No
Enclosed: Yes
Contiguous: Yes
Permitted: Yes
Wet space: No
Addition: No
Conversion: No

14 Floor 1 - Garage



Dimensions: 23'3" x 26'9"
Area: 577 sq. ft
Counted as living area: No

Heated: No
Finished: No
Enclosed: Yes
Contiguous: Yes
Permitted: Yes
Wet space: No
Addition: No
Conversion: No

15 Floor 1 - Bedroom



Dimensions: 11'11" x 18'0"
Area: 194 sq. ft
Counted as living area: Yes

Heated: Yes
Finished: Yes
Enclosed: Yes
Contiguous: Yes
Permitted: Yes
Wet space: No
Addition: No
Conversion: No

16 Floor 1 - Primary Bath



Dimensions: 11'10" x 9'6"
Area: 103 sq. ft
Counted as living area: Yes

Heated: Yes
Finished: Yes
Enclosed: Yes
Contiguous: Yes
Permitted: Yes
Wet space: Yes
Addition: No
Conversion: No

17 Floor 1 - W.I.C.



Dimensions: 11'10" x 7'4"
Area: 87 sq. ft
Counted as living area: Yes

Heated: Yes
Finished: Yes
Enclosed: Yes
Contiguous: Yes
Permitted: Yes
Wet space: No
Addition: No
Conversion: No