

Home report

71 Sage Court, Goffstown, Hillsborough County, New Hampshire, United States, 03045



Total Area: 3241 sq. ft

Below Ground: 830 sq. ft, Floor 2: 1053 sq. ft, Floor 3: 1358 sq. ft

Excluded: Utility 104 sq. ft, Garage 456 sq. ft, Deck 278 sq. ft, Fireplace 10 sq. ft, Low ceiling 53 sq. ft, Walls: 257 sq. ft

Property summary

 **3** Floors

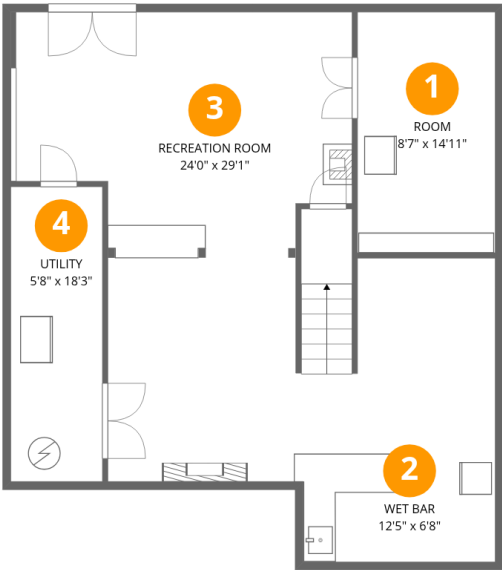
 **4** Bedrooms

 **3** Bathrooms

 **1** Garages

Home report

71 Sage Court, Goffstown, Hillsborough County, New Hampshire, United States, 03045



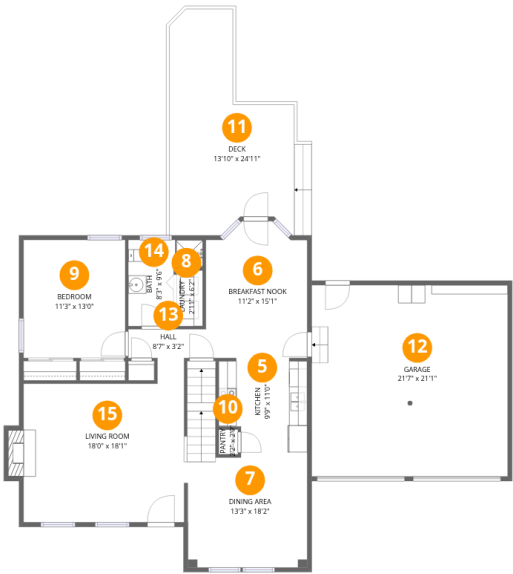
Room dimensions

Floor 1 Below ground Total:830sqft Excluded: 104sqft

#		Max Dimensions	sqft	Included
1	Room	8'7" x 14'11"	127 sq. ft	Yes
2	Wet Bar	12'5" x 6'8"	81 sq. ft	Yes
3	Recreation Room	24'0" x 29'1"	584 sq. ft	Yes
4	Utility	5'8" x 18'3"	104 sq. ft	No

Home report

71 Sage Court, Goffstown, Hillsborough County, New Hampshire, United States, 03045



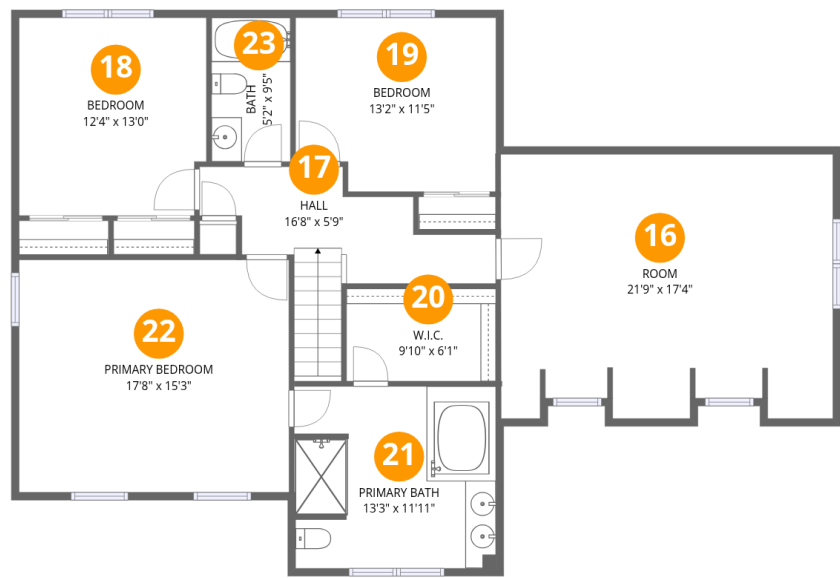
Room dimensions

Floor 2 Total:1053sqft Excluded: 744sqft

#		Max Dimensions	sqft	Included
5	Kitchen	9'9" x 11'0"	98 sq. ft	Yes
6	Breakfast Nook	11'2" x 15'1"	157 sq. ft	Yes
7	Dining Area	13'3" x 18'2"	194 sq. ft	Yes
8	Laundry	2'11" x 6'2"	18 sq. ft	Yes
9	Bedroom	11'3" x 13'0"	146 sq. ft	Yes
10	Pantry	2'2" x 2'9"	6 sq. ft	Yes
11	Deck	13'10" x 24'11"	278 sq. ft	No
12	Garage	21'7" x 21'1"	456 sq. ft	No
13	Hall	8'7" x 3'2"	27 sq. ft	Yes
14	Bath	8'3" x 9'6"	57 sq. ft	Yes
15	Living Room	18'0" x 18'1"	289 sq. ft	Yes

Home report

71 Sage Court, Goffstown, Hillsborough County, New Hampshire, United States, 03045



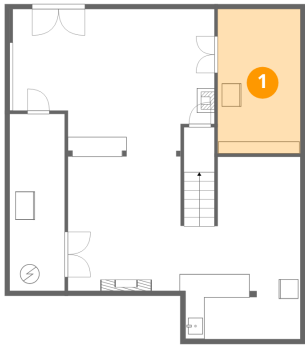
Room dimensions

Floor 3 Total:1358sqft Excluded: 53sqft

#		Max Dimensions	sqft	Included
16	Room	21'9" x 17'4"	309 sq. ft	Yes
17	Hall	16'8" x 5'9"	117 sq. ft	Yes
18	Bedroom	12'4" x 13'0"	157 sq. ft	Yes
19	Bedroom	13'2" x 11'5"	143 sq. ft	Yes
20	W.I.C.	9'10" x 6'1"	60 sq. ft	Yes
21	Primary Bath	13'3" x 11'11"	155 sq. ft	Yes
22	Primary Bedroom	17'8" x 15'3"	270 sq. ft	Yes
23	Bath	5'2" x 9'5"	49 sq. ft	Yes

71 Sage Court, Goffstown, Hillsborough County, New Hampshire, United States, 03045

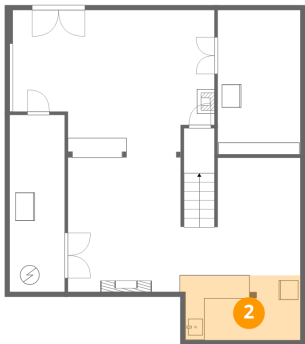
1 Floor 1 - Room



Max Dimensions: 8'7" x 14'11"
Calculated Area: 127 sq. ft
Included: Yes

Heated: Yes
Finished: Yes
Enclosed: Yes
Contiguous: Yes
Permitted: Yes
Wet space: No
Addition: No
Conversion: No

2 Floor 1 - Wet Bar

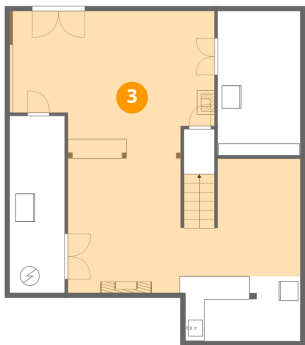


Max Dimensions: 12'5" x 6'8"
Calculated Area: 81 sq. ft
Included: Yes

Heated: Yes
Finished: Yes
Enclosed: Yes
Contiguous: Yes
Permitted: Yes
Wet space: No
Addition: No
Conversion: No

71 Sage Court, Goffstown, Hillsborough County, New Hampshire, United States, 03045

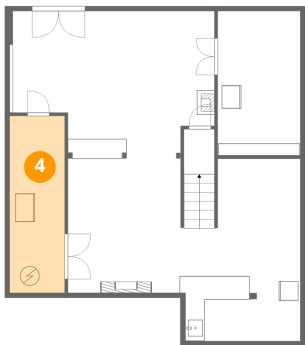
3 Floor 1 - Recreation Room



Max Dimensions: 24'0" x 29'1"
Calculated Area: 584 sq. ft
Included: Yes

Heated: Yes
Finished: Yes
Enclosed: Yes
Contiguous: Yes
Permitted: Yes
Wet space: No
Addition: No
Conversion: No

4 Floor 1 - Utility



Max Dimensions: 5'8" x 18'3"
Calculated Area: 104 sq. ft
Included: No

Heated: Yes
Finished: No
Enclosed: Yes
Contiguous: Yes
Permitted: Yes
Wet space: No
Addition: No
Conversion: No

5 Floor 2 - Kitchen



Max Dimensions: 9'9" x 11'0"
Calculated Area: 98 sq. ft
Included: Yes

Heated: Yes
Finished: Yes
Enclosed: Yes
Contiguous: Yes
Permitted: Yes
Wet space: No
Addition: No
Conversion: No

71 Sage Court, Goffstown, Hillsborough County, New Hampshire, United States, 03045

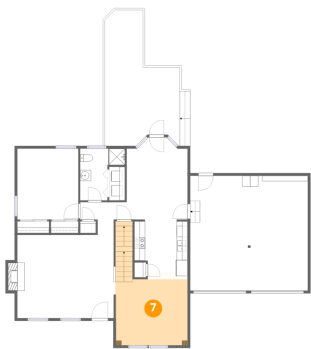
6 Floor 2 - Breakfast Nook



Max Dimensions: 11'2" x 15'1"
Calculated Area: 157 sq. ft
Included: Yes

Heated: Yes
Finished: Yes
Enclosed: Yes
Contiguous: Yes
Permitted: Yes
Wet space: No
Addition: No
Conversion: No

7 Floor 2 - Dining Area



Max Dimensions: 13'3" x 18'2"
Calculated Area: 194 sq. ft
Included: Yes

Heated: Yes
Finished: Yes
Enclosed: Yes
Contiguous: Yes
Permitted: Yes
Wet space: No
Addition: No
Conversion: No

8 Floor 2 - Laundry

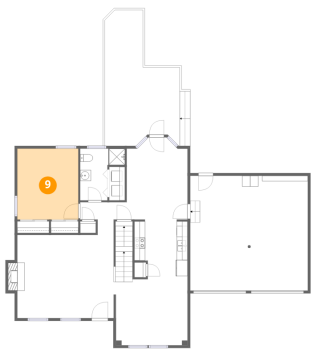


Max Dimensions: 2'11" x 6'2"
Calculated Area: 18 sq. ft
Included: Yes

Heated: Yes
Finished: Yes
Enclosed: Yes
Contiguous: Yes
Permitted: Yes
Wet space: No
Addition: No
Conversion: No

71 Sage Court, Goffstown, Hillsborough County, New Hampshire, United States, 03045

9 Floor 2 - Bedroom



Max Dimensions: 11'3" x 13'0"
Calculated Area: 146 sq. ft
Included: Yes

Heated: Yes
Finished: Yes
Enclosed: Yes
Contiguous: Yes
Permitted: Yes
Wet space: No
Addition: No
Conversion: No

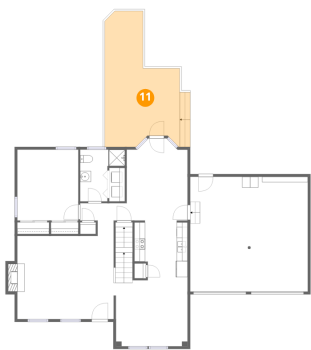
10 Floor 2 - Pantry



Max Dimensions: 2'2" x 2'9"
Calculated Area: 6 sq. ft
Included: Yes

Heated: Yes
Finished: Yes
Enclosed: Yes
Contiguous: Yes
Permitted: Yes
Wet space: No
Addition: No
Conversion: No

11 Floor 2 - Deck

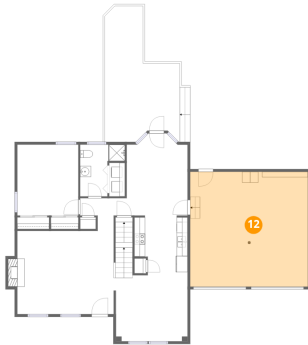


Max Dimensions: 13'10" x 24'11"
Calculated Area: 278 sq. ft
Included: No

Heated: No
Finished: No
Enclosed: No
Contiguous: Yes
Permitted: Yes
Wet space: No
Addition: No
Conversion: No

71 Sage Court, Goffstown, Hillsborough County, New Hampshire, United States, 03045

12 Floor 2 - Garage



Max Dimensions: 21'7" x 21'1"
Calculated Area: 456 sq. ft
Included: No

Heated: No
Finished: No
Enclosed: Yes
Contiguous: Yes
Permitted: Yes
Wet space: No
Addition: No
Conversion: No

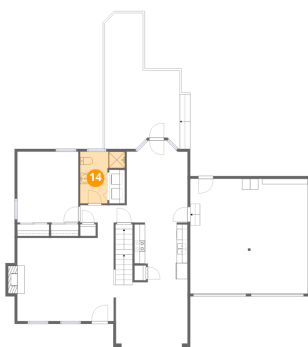
13 Floor 2 - Hall



Max Dimensions: 8'7" x 3'2"
Calculated Area: 27 sq. ft
Included: Yes

Heated: Yes
Finished: Yes
Enclosed: Yes
Contiguous: Yes
Permitted: Yes
Wet space: No
Addition: No
Conversion: No

14 Floor 2 - Bath

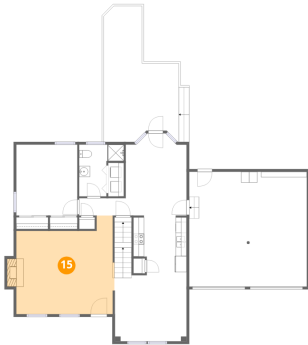


Max Dimensions: 8'3" x 9'6"
Calculated Area: 57 sq. ft
Included: Yes

Heated: Yes
Finished: Yes
Enclosed: Yes
Contiguous: Yes
Permitted: Yes
Wet space: Yes
Addition: No
Conversion: No

71 Sage Court, Goffstown, Hillsborough County, New Hampshire, United States, 03045

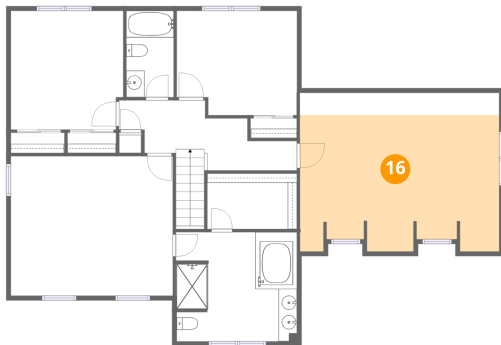
15 Floor 2 - Living Room



Max Dimensions: 18'0" x 18'1"
Calculated Area: 289 sq. ft
Included: Yes

Heated: Yes
Finished: Yes
Enclosed: Yes
Contiguous: Yes
Permitted: Yes
Wet space: No
Addition: No
Conversion: No

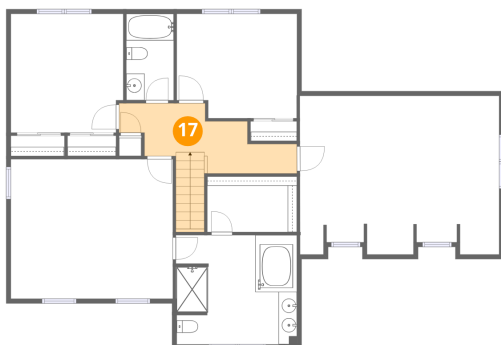
16 Floor 3 - Room



Max Dimensions: 21'9" x 17'4"
Calculated Area: 309 sq. ft
Included: Yes

Heated: Yes
Finished: Yes
Enclosed: Yes
Contiguous: Yes
Permitted: Yes
Wet space: No
Addition: No
Conversion: No

17 Floor 3 - Hall



Max Dimensions: 16'8" x 5'9"
Calculated Area: 117 sq. ft
Included: Yes

Heated: Yes
Finished: Yes
Enclosed: Yes
Contiguous: Yes
Permitted: Yes
Wet space: No
Addition: No
Conversion: No

71 Sage Court, Goffstown, Hillsborough County, New Hampshire, United States, 03045

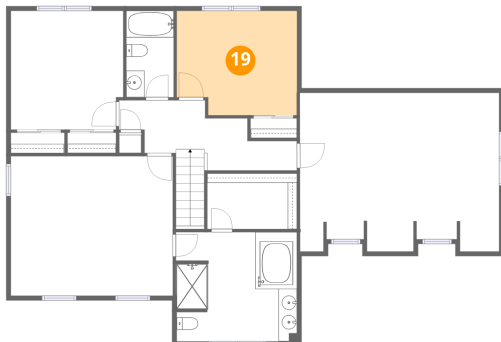
18 Floor 3 - Bedroom



Max Dimensions: 12'4" x 13'0"
Calculated Area: 157 sq. ft
Included: Yes

Heated: Yes
Finished: Yes
Enclosed: Yes
Contiguous: Yes
Permitted: Yes
Wet space: No
Addition: No
Conversion: No

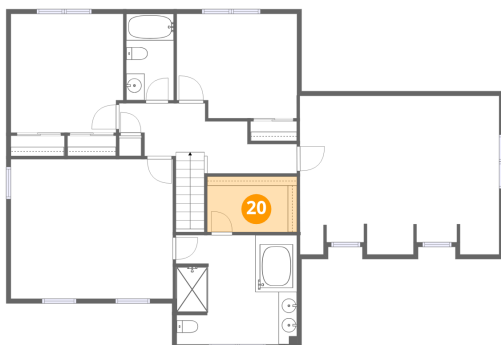
19 Floor 3 - Bedroom



Max Dimensions: 13'2" x 11'5"
Calculated Area: 143 sq. ft
Included: Yes

Heated: Yes
Finished: Yes
Enclosed: Yes
Contiguous: Yes
Permitted: Yes
Wet space: No
Addition: No
Conversion: No

20 Floor 3 - W.I.C.

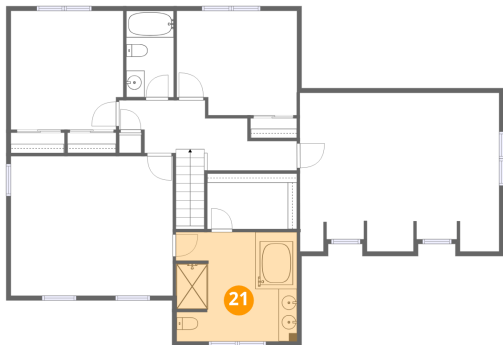


Max Dimensions: 9'10" x 6'1"
Calculated Area: 60 sq. ft
Included: Yes

Heated: Yes
Finished: Yes
Enclosed: Yes
Contiguous: Yes
Permitted: Yes
Wet space: No
Addition: No
Conversion: No

71 Sage Court, Goffstown, Hillsborough County, New Hampshire, United States, 03045

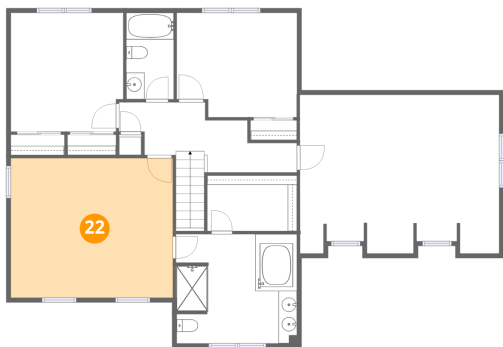
21 Floor 3 - Primary Bath



Max Dimensions: 13'3" x 11'11"
Calculated Area: 155 sq. ft
Included: Yes

Heated: Yes
Finished: Yes
Enclosed: Yes
Contiguous: Yes
Permitted: Yes
Wet space: Yes
Addition: No
Conversion: No

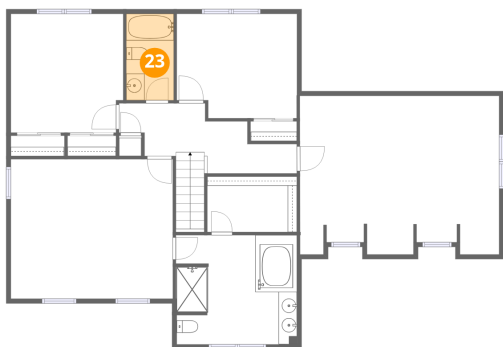
22 Floor 3 - Primary Bedroom



Max Dimensions: 17'8" x 15'3"
Calculated Area: 270 sq. ft
Included: Yes

Heated: Yes
Finished: Yes
Enclosed: Yes
Contiguous: Yes
Permitted: Yes
Wet space: No
Addition: No
Conversion: No

23 Floor 3 - Bath



Max Dimensions: 5'2" x 9'5"
Calculated Area: 49 sq. ft
Included: Yes

Heated: Yes
Finished: Yes
Enclosed: Yes
Contiguous: Yes
Permitted: Yes
Wet space: Yes
Addition: No
Conversion: No