

# Home data report

## 3593 Larkspur Dr, Longmont, CO, US



**Total Area: 1853 sq. ft**

Basement: 0 sq. ft, 1st Floor: 912 sq. ft, 2nd Floor: 941 sq. ft

Excluded: Basement 739 sq. ft, Utility 78 sq. ft, Garage 597 sq. ft, Fireplace 13 sq. ft, Walls: 242 sq. ft

### Property summary


 **3** Floors

 **4** Bedrooms

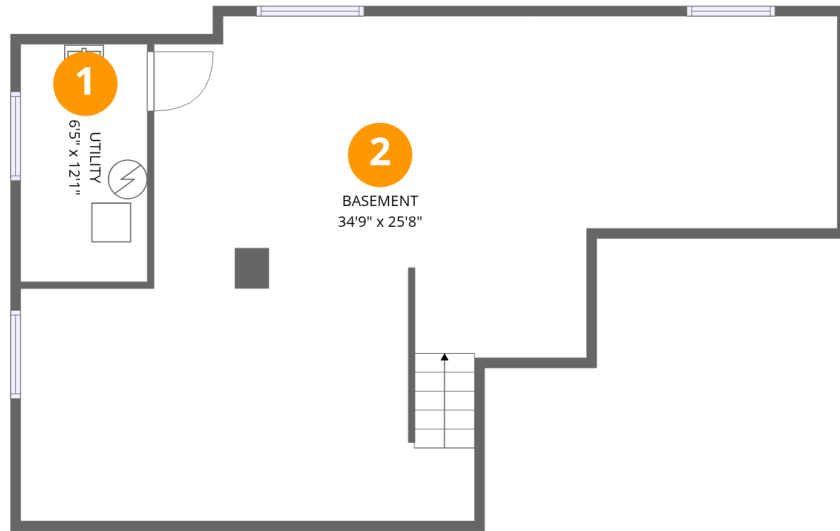
 **2** Bathrooms

Home data report

# 3593 Larkspur Dr, Longmont, CO, US

 **1**  
Half baths

 **1**  
Garages



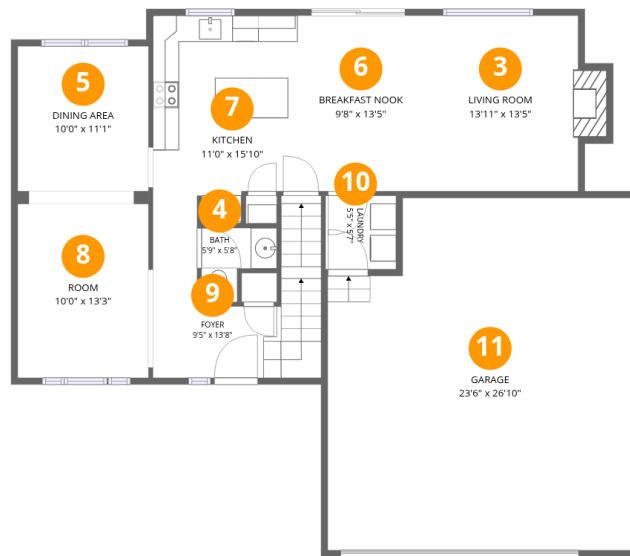
## Room dimensions

Floor 1 Below grade

Total: 0sqft

Excluded: 817sqft

#		Dimensions	sqft	Counted as living area
1	Utility	6'5" x 12'1"	78 sq. ft	No
2	Basement	34'9" x 25'8"	732 sq. ft	No



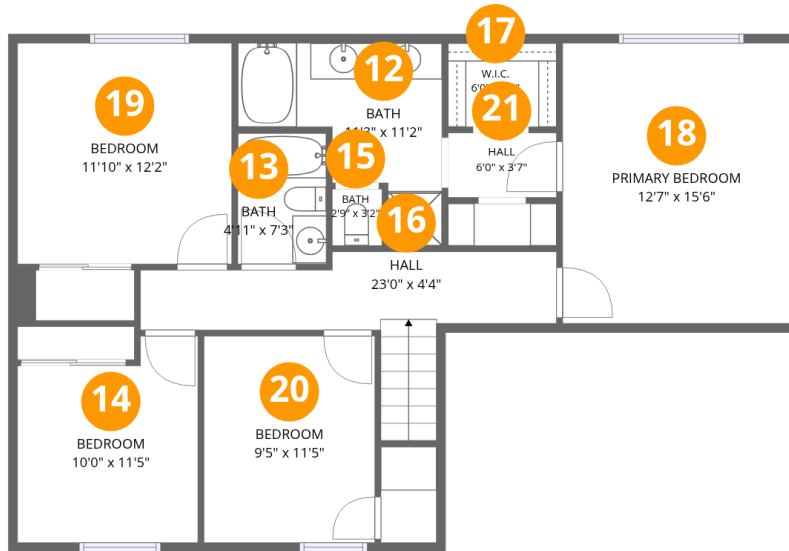
## Room dimensions

Floor 2

Total: 912sqft

Excluded: 610sqft

#		Dimensions	sqft	Counted as living area
3	Living Room	13'11" x 13'5"	168 sq. ft	Yes
4	Bath	5'9" x 5'8"	25 sq. ft	Yes
5	Dining Area	10'0" x 11'1"	110 sq. ft	Yes
6	Breakfast Nook	9'8" x 13'5"	130 sq. ft	Yes
7	Kitchen	11'0" x 15'10"	156 sq. ft	Yes
8	Room	10'0" x 13'3"	132 sq. ft	Yes
9	Foyer	9'5" x 13'8"	123 sq. ft	Yes
10	Laundry	5'5" x 5'7"	30 sq. ft	Yes
11	Garage	23'6" x 26'10"	597 sq. ft	No



## Room dimensions

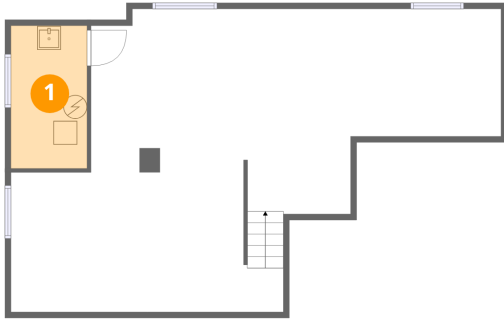
Floor 3

Total:941sqft

Excluded: 0sqft

#		Dimensions	sqft	Counted as living area
12	Bath	11'3" x 11'2"	81 sq. ft	Yes
13	Bath	4'11" x 7'3"	35 sq. ft	Yes
14	Bedroom	10'0" x 11'5"	103 sq. ft	Yes
15	Bath	2'9" x 3'2"	9 sq. ft	Yes
16	Hall	23'0" x 4'4"	105 sq. ft	Yes
17	W.I.C.	6'0" x 4'7"	28 sq. ft	Yes
18	Primary Bedroom	12'7" x 15'6"	195 sq. ft	Yes
19	Bedroom	11'10" x 12'2"	144 sq. ft	Yes
20	Bedroom	9'5" x 11'5"	108 sq. ft	Yes
21	Hall	6'0" x 3'7"	21 sq. ft	Yes

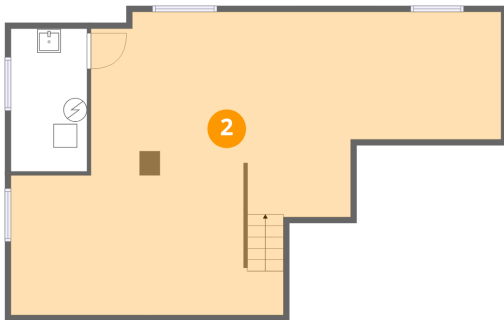
## 1 Floor 1 - Utility



Dimensions: 6'5" x 12'1"  
Area: 78 sq. ft  
Counted as living area: No

Heated: Yes  
Finished: No  
Enclosed: Yes  
Contiguous: Yes  
Permitted: Yes  
Wet space: No  
Addition: No  
Conversion: No

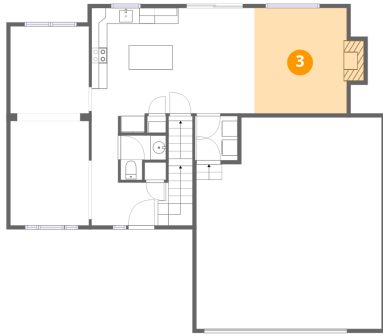
## 2 Floor 1 - Basement



Dimensions: 34'9" x 25'8"  
Area: 732 sq. ft  
Counted as living area: No

Heated: Yes  
Finished: No  
Enclosed: Yes  
Contiguous: Yes  
Permitted: Yes  
Wet space: No  
Addition: No  
Conversion: No

### 3 Floor 2 - Living Room



Dimensions: 13'11" x 13'5"  
Area: 168 sq. ft  
Counted as living area: Yes

Heated: Yes  
Finished: Yes  
Enclosed: Yes  
Contiguous: Yes  
Permitted: Yes  
Wet space: No  
Addition: No  
Conversion: No

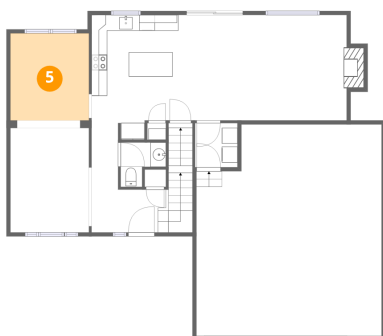
### 4 Floor 2 - Bath



Dimensions: 5'9" x 5'8"  
Area: 25 sq. ft  
Counted as living area: Yes

Heated: Yes  
Finished: Yes  
Enclosed: Yes  
Contiguous: Yes  
Permitted: Yes  
Wet space: Yes  
Addition: No  
Conversion: No

### 5 Floor 2 - Dining Area



Dimensions: 10'0" x 11'1"  
Area: 110 sq. ft  
Counted as living area: Yes

Heated: Yes  
Finished: Yes  
Enclosed: Yes  
Contiguous: Yes  
Permitted: Yes  
Wet space: No  
Addition: No  
Conversion: No

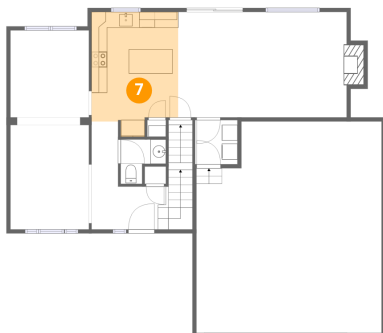
## 6 Floor 2 - Breakfast Nook



Dimensions: 9'8" x 13'5"  
Area: 130 sq. ft  
Counted as living area: Yes

Heated: Yes  
Finished: Yes  
Enclosed: Yes  
Contiguous: Yes  
Permitted: Yes  
Wet space: No  
Addition: No  
Conversion: No

## 7 Floor 2 - Kitchen



Dimensions: 11'0" x 15'10"  
Area: 156 sq. ft  
Counted as living area: Yes

Heated: Yes  
Finished: Yes  
Enclosed: Yes  
Contiguous: Yes  
Permitted: Yes  
Wet space: No  
Addition: No  
Conversion: No

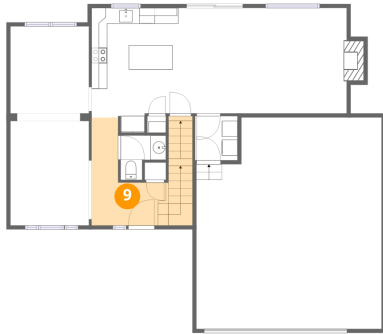
## 8 Floor 2 - Room



Dimensions: 10'0" x 13'3"  
Area: 132 sq. ft  
Counted as living area: Yes

Heated: Yes  
Finished: Yes  
Enclosed: Yes  
Contiguous: Yes  
Permitted: Yes  
Wet space: No  
Addition: No  
Conversion: No

**9** Floor 2 - Foyer



Dimensions: 9'5" x 13'8"  
Area: 123 sq. ft  
Counted as living area: Yes

Heated: Yes  
Finished: Yes  
Enclosed: Yes  
Contiguous: Yes  
Permitted: Yes  
Wet space: No  
Addition: No  
Conversion: No

**10** Floor 2 - Laundry



Dimensions: 5'5" x 5'7"  
Area: 30 sq. ft  
Counted as living area: Yes

Heated: Yes  
Finished: Yes  
Enclosed: Yes  
Contiguous: Yes  
Permitted: Yes  
Wet space: No  
Addition: No  
Conversion: No

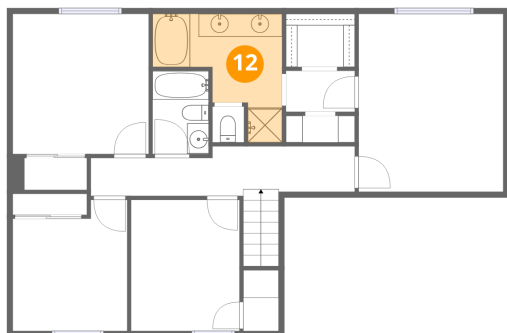
**11** Floor 2 - Garage



Dimensions: 23'6" x 26'10"  
Area: 597 sq. ft  
Counted as living area: No

Heated: No  
Finished: No  
Enclosed: Yes  
Contiguous: Yes  
Permitted: Yes  
Wet space: No  
Addition: No  
Conversion: No

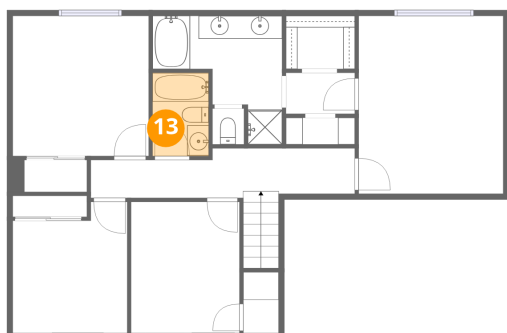
**12** Floor 3 - Bath



Dimensions: 11'3" x 11'2"  
Area: 81 sq. ft  
Counted as living area: Yes

Heated: Yes  
Finished: Yes  
Enclosed: Yes  
Contiguous: Yes  
Permitted: Yes  
Wet space: Yes  
Addition: No  
Conversion: No

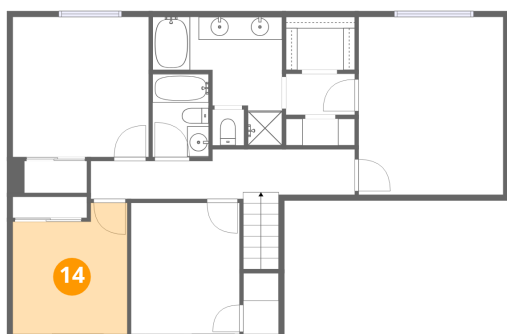
**13** Floor 3 - Bath



Dimensions: 4'11" x 7'3"  
Area: 35 sq. ft  
Counted as living area: Yes

Heated: Yes  
Finished: Yes  
Enclosed: Yes  
Contiguous: Yes  
Permitted: Yes  
Wet space: Yes  
Addition: No  
Conversion: No

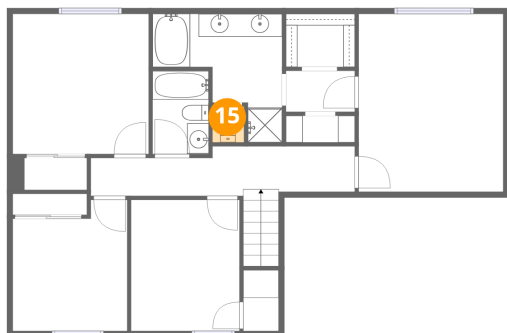
**14** Floor 3 - Bedroom



Dimensions: 10'0" x 11'5"  
Area: 103 sq. ft  
Counted as living area: Yes

Heated: Yes  
Finished: Yes  
Enclosed: Yes  
Contiguous: Yes  
Permitted: Yes  
Wet space: No  
Addition: No  
Conversion: No

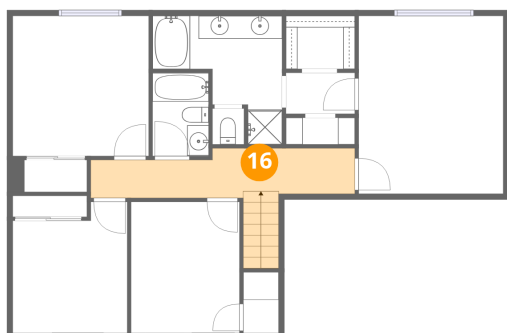
**15** Floor 3 - Bath



Dimensions: 2'9" x 3'2"  
Area: 9 sq. ft  
Counted as living area: Yes

Heated: Yes  
Finished: Yes  
Enclosed: Yes  
Contiguous: Yes  
Permitted: Yes  
Wet space: No  
Addition: No  
Conversion: No

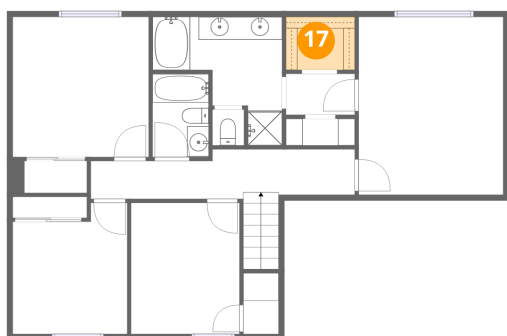
**16** Floor 3 - Hall



Dimensions: 23'0" x 4'4"  
Area: 105 sq. ft  
Counted as living area: Yes

Heated: Yes  
Finished: Yes  
Enclosed: Yes  
Contiguous: Yes  
Permitted: Yes  
Wet space: No  
Addition: No  
Conversion: No

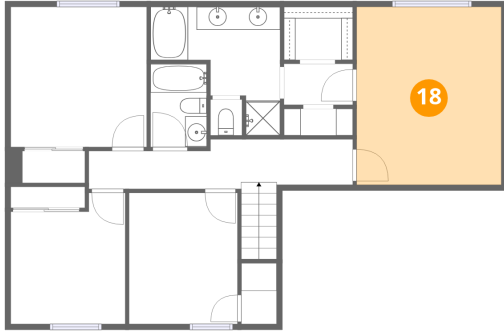
**17** Floor 3 - W.I.C.



Dimensions: 6'0" x 4'7"  
Area: 28 sq. ft  
Counted as living area: Yes

Heated: Yes  
Finished: Yes  
Enclosed: Yes  
Contiguous: Yes  
Permitted: Yes  
Wet space: No  
Addition: No  
Conversion: No

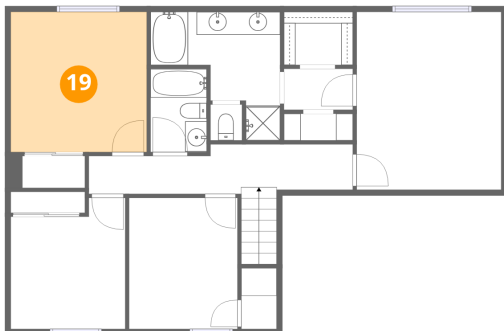
**18** Floor 3 - Primary Bedroom



Dimensions: 12'7" x 15'6"  
Area: 195 sq. ft  
Counted as living area: Yes

Heated: Yes  
Finished: Yes  
Enclosed: Yes  
Contiguous: Yes  
Permitted: Yes  
Wet space: No  
Addition: No  
Conversion: No

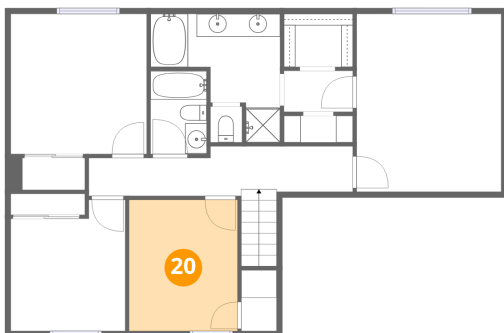
**19** Floor 3 - Bedroom



Dimensions: 11'10" x 12'2"  
Area: 144 sq. ft  
Counted as living area: Yes

Heated: Yes  
Finished: Yes  
Enclosed: Yes  
Contiguous: Yes  
Permitted: Yes  
Wet space: No  
Addition: No  
Conversion: No

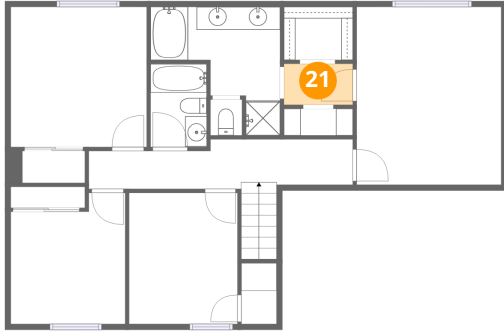
**20** Floor 3 - Bedroom



Dimensions: 9'5" x 11'5"  
Area: 108 sq. ft  
Counted as living area: Yes

Heated: Yes  
Finished: Yes  
Enclosed: Yes  
Contiguous: Yes  
Permitted: Yes  
Wet space: No  
Addition: No  
Conversion: No

**21** Floor 3 - Hall



Dimensions: 6'0" x 3'7"  
Area: 21 sq. ft  
Counted as living area: Yes

Heated: Yes  
Finished: Yes  
Enclosed: Yes  
Contiguous: Yes  
Permitted: Yes  
Wet space: No  
Addition: No  
Conversion: No