

Home data report

# 496 Parkview Dr, Pittsburgh, PA, US



**Total Area: 1110 sq. ft**

Basement: 181 sq. ft, 1st Floor: 467 sq. ft, 2nd Floor: 462 sq. ft

Excluded: Garage 191 sq. ft, Utility 82 sq. ft, Deck 306 sq. ft, Porch 99 sq. ft, Fireplace 14 sq. ft, Walls: 144 sq. ft

## Property summary

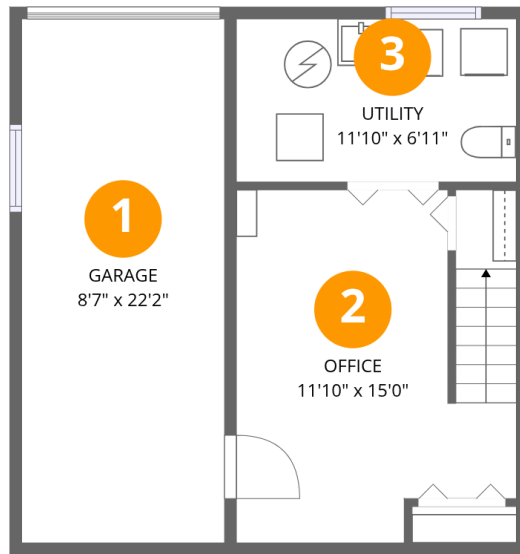
 **3** Floors

 **2** Bedrooms

 **1** Bathrooms

 **1** Garages

# 496 Parkview Dr,Pittsburgh,PA,US



## Room dimensions

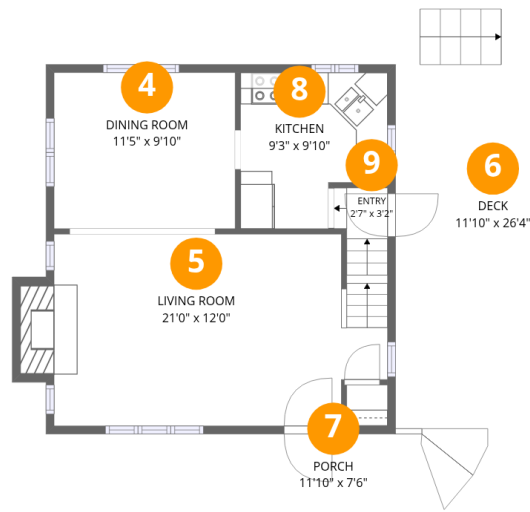
Floor 1 Below grade

Total:181sqft

Excluded: 273sqft

#		Dimensions	sqft	Counted as living area
1	Garage	8'7" x 22'2"	191 sq. ft	No
2	Office	11'10" x 15'0"	153 sq. ft	Yes
3	Utility	11'10" x 6'11"	82 sq. ft	No

# 496 Parkview Dr, Pittsburgh, PA, US



## Room dimensions

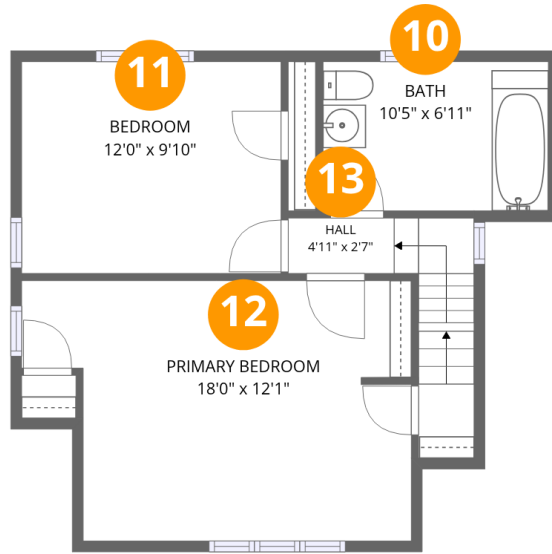
Floor 2

Total:467sqft

Excluded: 419sqft

#		Dimensions	sqft	Counted as living area
4	Dining Room	11'5" x 9'10"	112 sq. ft	Yes
5	Living Room	21'0" x 12'0"	246 sq. ft	Yes
6	Deck	11'10" x 26'4"	306 sq. ft	No
7	Porch	11'10" x 7'6"	99 sq. ft	No
8	Kitchen	9'3" x 9'10"	80 sq. ft	Yes
9	Entry	2'7" x 3'2"	17 sq. ft	Yes

# 496 Parkview Dr,Pittsburgh,PA,US



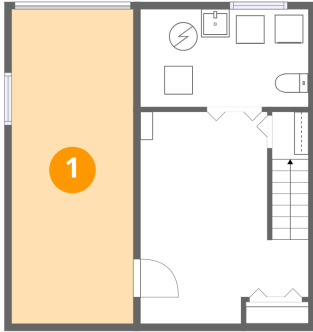
## Room dimensions

Floor 3

Total:462sqft Excluded: 0sqft

#		Dimensions	sqft	Counted as living area
10	Bath	10'5" x 6'11"	72 sq. ft	Yes
11	Bedroom	12'0" x 9'10"	118 sq. ft	Yes
12	Primary Bedroom	18'0" x 12'1"	194 sq. ft	Yes
13	Hall	4'11" x 2'7"	29 sq. ft	Yes

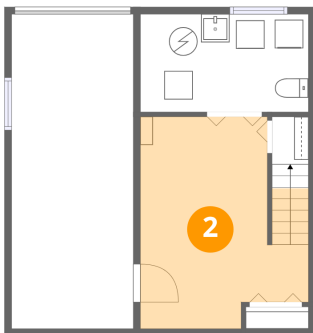
## 1 Floor 1 - Garage



Dimensions: 8'7" x 22'2"  
Area: 191 sq. ft  
Counted as living area: No

Heated: No  
Finished: No  
Enclosed: Yes  
Contiguous: Yes  
Permitted: Yes  
Wet space: No  
Addition: No  
Conversion: No

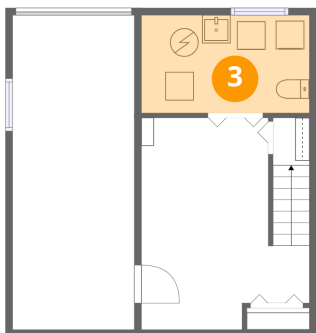
## 2 Floor 1 - Office



Dimensions: 11'10" x 15'0"  
Area: 153 sq. ft  
Counted as living area: Yes

Heated: Yes  
Finished: Yes  
Enclosed: Yes  
Contiguous: Yes  
Permitted: Yes  
Wet space: No  
Addition: No  
Conversion: No

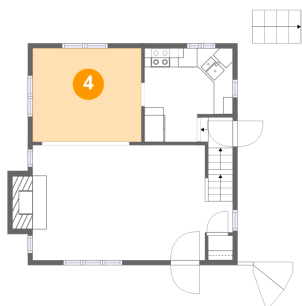
### 3 Floor 1 - Utility



Dimensions: 11'10" x 6'11"  
Area: 82 sq. ft  
Counted as living area: No

Heated: Yes  
Finished: No  
Enclosed: Yes  
Contiguous: Yes  
Permitted: Yes  
Wet space: No  
Addition: No  
Conversion: No

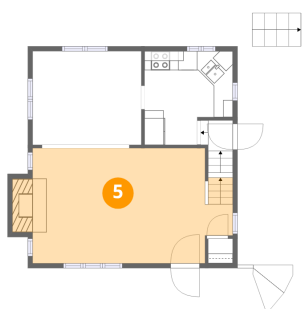
### 4 Floor 2 - Dining Room



Dimensions: 11'5" x 9'10"  
Area: 112 sq. ft  
Counted as living area: Yes

Heated: Yes  
Finished: Yes  
Enclosed: Yes  
Contiguous: Yes  
Permitted: Yes  
Wet space: No  
Addition: No  
Conversion: No

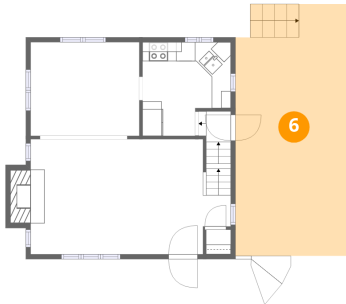
### 5 Floor 2 - Living Room



Dimensions: 21'0" x 12'0"  
Area: 246 sq. ft  
Counted as living area: Yes

Heated: Yes  
Finished: Yes  
Enclosed: Yes  
Contiguous: Yes  
Permitted: Yes  
Wet space: No  
Addition: No  
Conversion: No

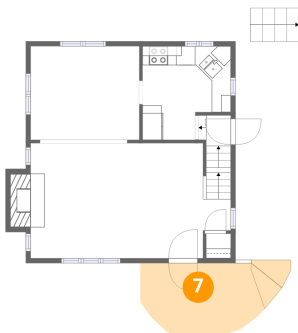
## 6 Floor 2 - Deck



Dimensions: 11'10" x 26'4"  
Area: 306 sq. ft  
Counted as living area: No

Heated: No  
Finished: No  
Enclosed: No  
Contiguous: Yes  
Permitted: Yes  
Wet space: No  
Addition: No  
Conversion: No

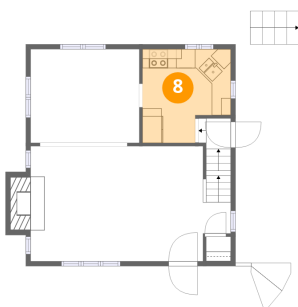
## 7 Floor 2 - Porch



Dimensions: 11'10" x 7'6"  
Area: 99 sq. ft  
Counted as living area: No

Heated: No  
Finished: No  
Enclosed: No  
Contiguous: Yes  
Permitted: Yes  
Wet space: No  
Addition: No  
Conversion: No

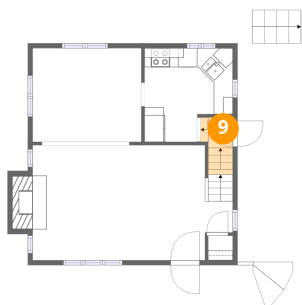
## 8 Floor 2 - Kitchen



Dimensions: 9'3" x 9'10"  
Area: 80 sq. ft  
Counted as living area: Yes

Heated: Yes  
Finished: Yes  
Enclosed: Yes  
Contiguous: Yes  
Permitted: Yes  
Wet space: No  
Addition: No  
Conversion: No

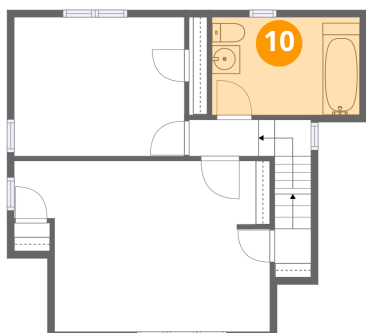
### 9 Floor 2 - Entry



Dimensions: 2'7" x 3'2"  
Area: 17 sq. ft  
Counted as living area: Yes

Heated: Yes  
Finished: Yes  
Enclosed: Yes  
Contiguous: Yes  
Permitted: Yes  
Wet space: No  
Addition: No  
Conversion: No

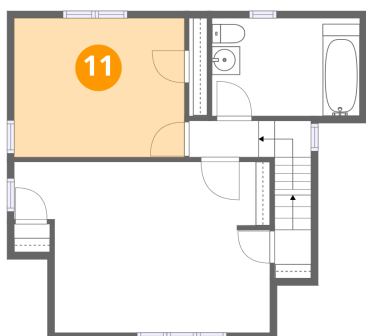
### 10 Floor 3 - Bath



Dimensions: 10'5" x 6'11"  
Area: 72 sq. ft  
Counted as living area: Yes

Heated: Yes  
Finished: Yes  
Enclosed: Yes  
Contiguous: Yes  
Permitted: Yes  
Wet space: Yes  
Addition: No  
Conversion: No

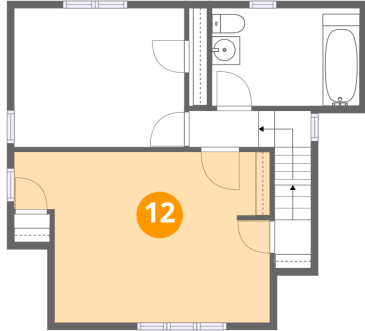
### 11 Floor 3 - Bedroom



Dimensions: 12'0" x 9'10"  
Area: 118 sq. ft  
Counted as living area: Yes

Heated: Yes  
Finished: Yes  
Enclosed: Yes  
Contiguous: Yes  
Permitted: Yes  
Wet space: No  
Addition: No  
Conversion: No

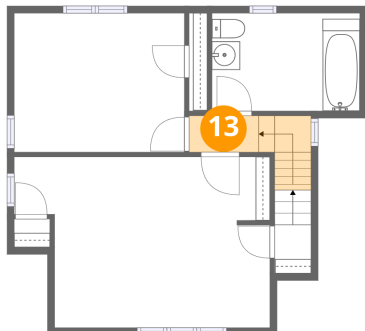
## 12 Floor 3 - Primary Bedroom



Dimensions: 18'0" x 12'1"  
Area: 194 sq. ft  
Counted as living area: Yes

Heated: Yes  
Finished: Yes  
Enclosed: Yes  
Contiguous: Yes  
Permitted: Yes  
Wet space: No  
Addition: No  
Conversion: No

## 13 Floor 3 - Hall



Dimensions: 4'11" x 2'7"  
Area: 29 sq. ft  
Counted as living area: Yes

Heated: Yes  
Finished: Yes  
Enclosed: Yes  
Contiguous: Yes  
Permitted: Yes  
Wet space: No  
Addition: No  
Conversion: No