

Home data report

294 Wood Hollow Drive, Weatherford, Parker County, Texas,
United States, 76087



Total Area: 2576 sq. ft
1st Floor: 1733 sq. ft, 2nd Floor: 843 sq. ft
Excluded: Porch 278 sq. ft, Patio 22 sq. ft, Garage 500 sq. ft, Walls: 206 sq. ft

Property summary

 **2** Floors

 **3** Bedrooms

 **2** Bathrooms

Home data report

**294 Wood Hollow Drive, Weatherford, Parker County, Texas,
United States, 76087**



1
Half baths



1
Garages

Home data report

294 Wood Hollow Drive, Weatherford, Parker County, Texas,
United States, 76087



Room dimensions

Floor 1 Total:1733sqft Excluded: 800sqft

#		Dimensions	sqft	Counted as living area
1	Living Room	18'10" x 24'8"	528 sq. ft	Yes
2	Hall	3'10" x 3'9"	14 sq. ft	Yes
3	Pantry	5'4" x 5'3"	28 sq. ft	Yes
4	Dining Area	14'0" x 9'4"	130 sq. ft	Yes
5	Primary Bath	13'3" x 13'3"	134 sq. ft	Yes
6	Primary Bedroom	13'3" x 16'2"	214 sq. ft	Yes
7	Bath	5'5" x 5'5"	29 sq. ft	Yes
8	Bath	3'4" x 3'9"	12 sq. ft	Yes
9	Entry	5'4" x 7'1"	38 sq. ft	Yes
10	Hall	3'8" x 9'4"	35 sq. ft	Yes
11	W.I.C.	13'3" x 7'3"	96 sq. ft	Yes

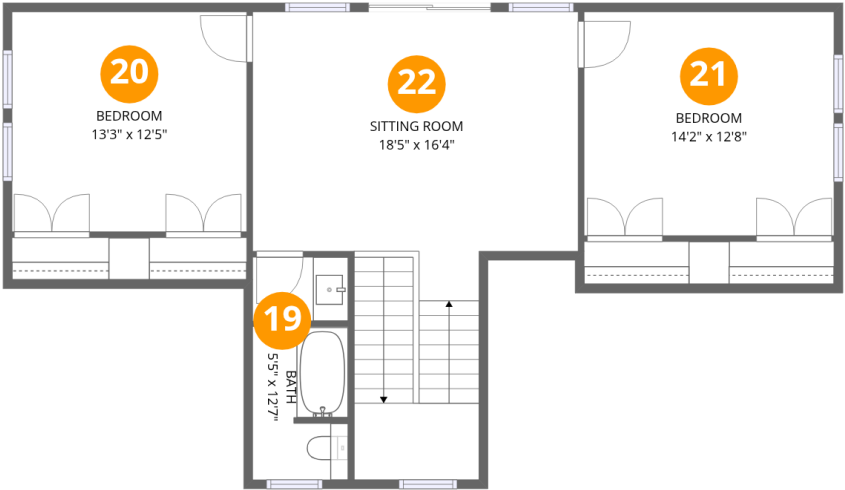
Home data report

**294 Wood Hollow Drive, Weatherford, Parker County, Texas,
United States, 76087**

#		Dimensions	sqft	Counted as living area
12	Laundry	8'0" x 6'3"	50 sq. ft	Yes
13	Patio	3'8" x 6'1"	22 sq. ft	No
14	Foyer	5'5" x 12'11"	70 sq. ft	Yes
15	Kitchen	14'0" x 17'6"	231 sq. ft	Yes
16	Hall	12'5" x 3'7"	44 sq. ft	Yes
17	Garage	21'5" x 23'4"	500 sq. ft	No
18	Porch	47'6" x 5'10"	278 sq. ft	No

Home data report

294 Wood Hollow Drive, Weatherford, Parker County, Texas,
United States, 76087



Room dimensions

Floor 2 Total:843sqft Excluded: 0sqft

#		Dimensions	sqft	Counted as living area
19	Bath	5'5" x 12'7"	66 sq. ft	Yes
20	Bedroom	13'3" x 12'5"	165 sq. ft	Yes
21	Bedroom	14'2" x 12'8"	179 sq. ft	Yes
22	Sitting Room	18'5" x 16'4"	341 sq. ft	Yes

294 Wood Hollow Drive, Weatherford, Parker County, Texas,
United States, 76087

1 Floor 1 - Living Room



Dimensions: 18'10" x 24'8"
Area: 528 sq. ft
Counted as living area: Yes

Heated: Yes
Finished: Yes
Enclosed: Yes
Contiguous: Yes
Permitted: Yes
Wet space: No
Addition: No
Conversion: No



2 Floor 1 - Hall



Dimensions: 3'10" x 3'9"
Area: 14 sq. ft
Counted as living area: Yes

Heated: Yes
Finished: Yes
Enclosed: Yes
Contiguous: Yes
Permitted: Yes
Wet space: No
Addition: No
Conversion: No



3 Floor 1 - Pantry



Dimensions: 5'4" x 5'3"
Area: 28 sq. ft
Counted as living area: Yes

Heated: Yes
Finished: Yes
Enclosed: Yes
Contiguous: Yes
Permitted: Yes
Wet space: No
Addition: No
Conversion: No

4 Floor 1 - Dining Area



Dimensions: 14'0" x 9'4"
Area: 130 sq. ft
Counted as living area: Yes

Heated: Yes
Finished: Yes
Enclosed: Yes
Contiguous: Yes
Permitted: Yes
Wet space: No
Addition: No
Conversion: No

5 Floor 1 - Primary Bath



Dimensions: 13'3" x 13'3"
Area: 134 sq. ft
Counted as living area: Yes

Heated: Yes
Finished: Yes
Enclosed: Yes
Contiguous: Yes
Permitted: Yes
Wet space: Yes
Addition: No
Conversion: No

294 Wood Hollow Drive, Weatherford, Parker County, Texas,
United States, 76087

6 Floor 1 - Primary Bedroom



Dimensions: 13'3" x 16'2"
Area: 214 sq. ft
Counted as living area: Yes

Heated: Yes
Finished: Yes
Enclosed: Yes
Contiguous: Yes
Permitted: Yes
Wet space: No
Addition: No
Conversion: No



7 Floor 1 - Bath



Dimensions: 5'5" x 5'5"
Area: 29 sq. ft
Counted as living area: Yes

Heated: Yes
Finished: Yes
Enclosed: Yes
Contiguous: Yes
Permitted: Yes
Wet space: Yes
Addition: No
Conversion: No



8 Floor 1 - Bath



Dimensions: 3'4" x 3'9"
Area: 12 sq. ft
Counted as living area: Yes

Heated: Yes
Finished: Yes
Enclosed: Yes
Contiguous: Yes
Permitted: Yes
Wet space: Yes
Addition: No
Conversion: No



294 Wood Hollow Drive, Weatherford, Parker County, Texas,
United States, 76087

9 Floor 1 - Entry



Dimensions: 5'4" x 7'1"
Area: 38 sq. ft
Counted as living area: Yes

Heated: Yes
Finished: Yes
Enclosed: Yes
Contiguous: Yes
Permitted: Yes
Wet space: No
Addition: No
Conversion: No



10 Floor 1 - Hall



Dimensions: 3'8" x 9'4"
Area: 35 sq. ft
Counted as living area: Yes

Heated: Yes
Finished: Yes
Enclosed: Yes
Contiguous: Yes
Permitted: Yes
Wet space: No
Addition: No
Conversion: No



11 Floor 1 - W.I.C.



Dimensions: 13'3" x 7'3"
Area: 96 sq. ft
Counted as living area: Yes

Heated: Yes
Finished: Yes
Enclosed: Yes
Contiguous: Yes
Permitted: Yes
Wet space: No
Addition: No
Conversion: No



294 Wood Hollow Drive, Weatherford, Parker County, Texas,
United States, 76087

12 Floor 1 - Laundry



Dimensions: 8'0" x 6'3"
Area: 50 sq. ft
Counted as living area: Yes

Heated: Yes
Finished: Yes
Enclosed: Yes
Contiguous: Yes
Permitted: Yes
Wet space: No
Addition: No
Conversion: No

13 Floor 1 - Patio



Dimensions: 3'8" x 6'1"
Area: 22 sq. ft
Counted as living area: No

Heated: No
Finished: No
Enclosed: No
Contiguous: Yes
Permitted: Yes
Wet space: No
Addition: No
Conversion: No

14 Floor 1 - Foyer



Dimensions: 5'5" x 12'11"
Area: 70 sq. ft
Counted as living area: Yes

Heated: Yes
Finished: Yes
Enclosed: Yes
Contiguous: Yes
Permitted: Yes
Wet space: No
Addition: No
Conversion: No

Home data report

294 Wood Hollow Drive, Weatherford, Parker County, Texas,
United States, 76087

15 Floor 1 - Kitchen



Dimensions: 14'0" x 17'6"
Area: 231 sq. ft
Counted as living area: Yes

Heated: Yes
Finished: Yes
Enclosed: Yes
Contiguous: Yes
Permitted: Yes
Wet space: No
Addition: No
Conversion: No

16 Floor 1 - Hall



Dimensions: 12'5" x 3'7"
Area: 44 sq. ft
Counted as living area: Yes

Heated: Yes
Finished: Yes
Enclosed: Yes
Contiguous: Yes
Permitted: Yes
Wet space: No
Addition: No
Conversion: No

17 Floor 1 - Garage



Dimensions: 21'5" x 23'4"
Area: 500 sq. ft
Counted as living area: No

Heated: No
Finished: No
Enclosed: Yes
Contiguous: Yes
Permitted: Yes
Wet space: No
Addition: No
Conversion: No

Home data report

294 Wood Hollow Drive, Weatherford, Parker County, Texas,
United States, 76087

18 Floor 1 - Porch

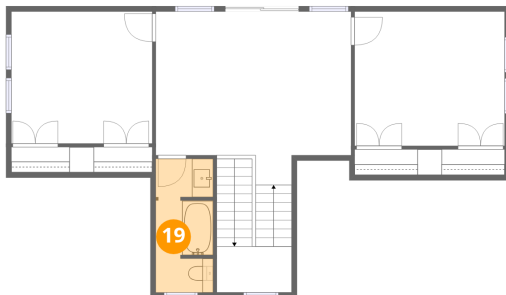


Dimensions: 47'6" x 5'10"
Area: 278 sq. ft
Counted as living area: No

Heated: No
Finished: No
Enclosed: No
Contiguous: Yes
Permitted: Yes
Wet space: No
Addition: No
Conversion: No



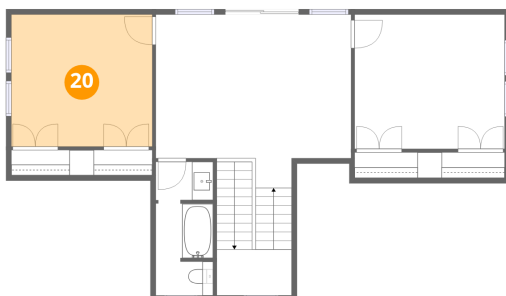
19 Floor 2 - Bath



Dimensions: 5'5" x 12'7"
Area: 66 sq. ft
Counted as living area: Yes

Heated: Yes
Finished: Yes
Enclosed: Yes
Contiguous: Yes
Permitted: Yes
Wet space: Yes
Addition: No
Conversion: No

20 Floor 2 - Bedroom



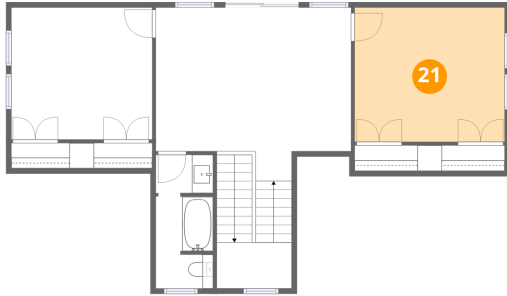
Dimensions: 13'3" x 12'5"
Area: 165 sq. ft
Counted as living area: Yes

Heated: Yes
Finished: Yes
Enclosed: Yes
Contiguous: Yes
Permitted: Yes
Wet space: No
Addition: No
Conversion: No

Home data report

294 Wood Hollow Drive, Weatherford, Parker County, Texas,
United States, 76087

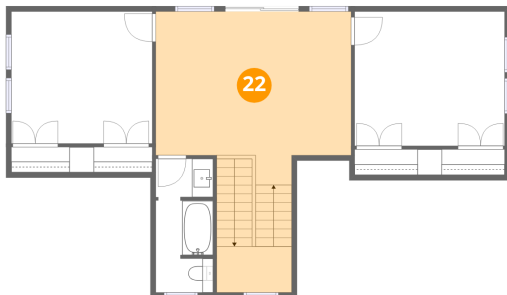
21 Floor 2 - Bedroom



Dimensions: 14'2" x 12'8"
Area: 179 sq. ft
Counted as living area: Yes

Heated: Yes
Finished: Yes
Enclosed: Yes
Contiguous: Yes
Permitted: Yes
Wet space: No
Addition: No
Conversion: No

22 Floor 2 - Sitting Room



Dimensions: 18'5" x 16'4"
Area: 341 sq. ft
Counted as living area: Yes

Heated: Yes
Finished: Yes
Enclosed: Yes
Contiguous: Yes
Permitted: Yes
Wet space: No
Addition: No
Conversion: No