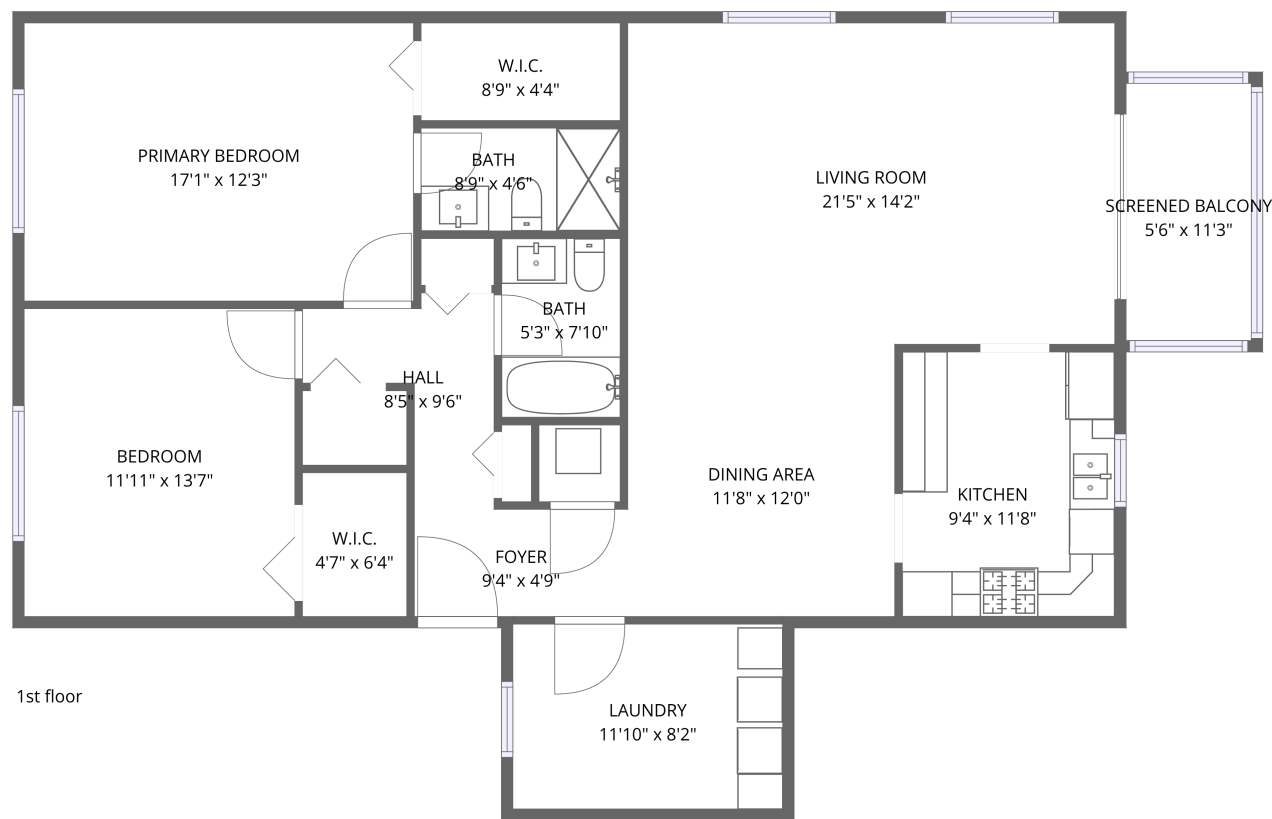


Home data report

8199 Terrace Garden Drive, Terrace Park at Five Towns, West Lealman, St. Petersburg, Pinellas County, Florida, United States,



**Total Area: 1352 sq. ft**

1st Floor: 1352 sq. ft

Excluded: Screened balcony 62 sq. ft, Walls: 0 sq. ft

Property summary

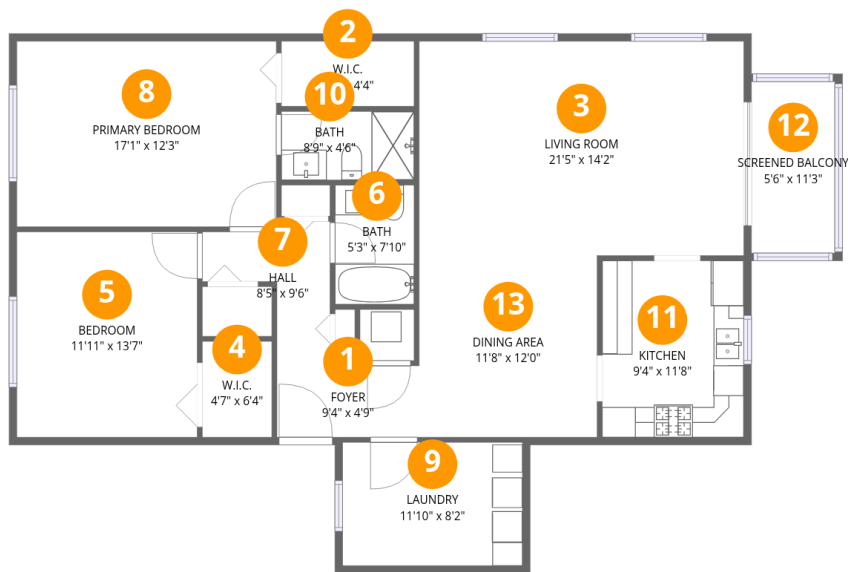
 **1** Floors

 **2** Bedrooms

 **2** Bathrooms

Home data report

8199 Terrace Garden Drive, Terrace Park at Five Towns, West Lealman, St. Petersburg, Pinellas County, Florida, United States,



Room dimensions

Floor 1 Total:1352sqft    Excluded: 62sqft

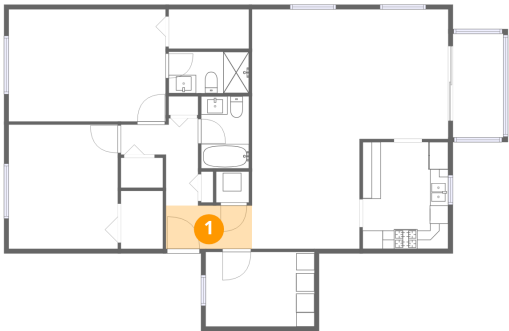
#		Dimensions	sqft	Counted as living area
1	Foyer	9'4" x 4'9"	44 sq. ft	Yes
2	W.I.C.	8'9" x 4'4"	38 sq. ft	Yes
3	Living Room	21'5" x 14'2"	303 sq. ft	Yes
4	W.I.C.	4'7" x 6'4"	29 sq. ft	Yes
5	Bedroom	11'11" x 13'7"	161 sq. ft	Yes
6	Bath	5'3" x 7'10"	41 sq. ft	Yes
7	Hall	8'5" x 9'6"	49 sq. ft	Yes
8	Primary Bedroom	17'1" x 12'3"	209 sq. ft	Yes
9	Laundry	11'10" x 8'2"	96 sq. ft	Yes
10	Bath	8'9" x 4'6"	40 sq. ft	Yes
11	Kitchen	9'4" x 11'8"	109 sq. ft	Yes

Home data report

8199 Terrace Garden Drive, Terrace Park at Five Towns, West Lealman, St. Petersburg, Pinellas County, Florida, United States,

#		Dimensions	sqft	Counted as living area
12	Screened Balcony	5'6" x 11'3"	62 sq. ft	No
13	Dining Area	11'8" x 12'0"	141 sq. ft	Yes

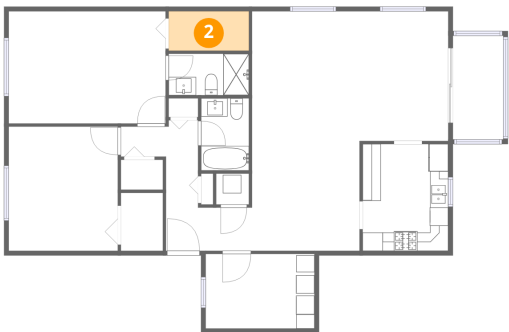
1 Floor 1 - Foyer



Dimensions: 9'4" x 4'9"  
Area: 44 sq. ft  
Counted as living area: Yes

Heated: Yes  
Finished: Yes  
Enclosed: Yes  
Contiguous: Yes  
Permitted: Yes  
Wet space: No  
Addition: No  
Conversion: No

2 Floor 1 - W.I.C.

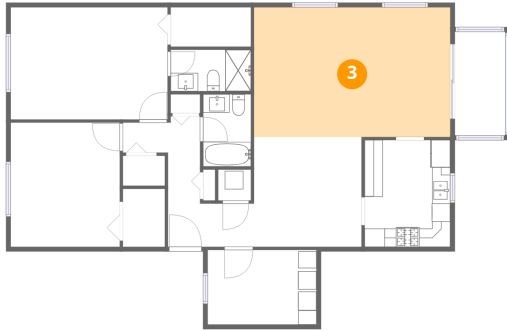


Dimensions: 8'9" x 4'4"  
Area: 38 sq. ft  
Counted as living area: Yes

Heated: Yes  
Finished: Yes  
Enclosed: Yes  
Contiguous: Yes  
Permitted: Yes  
Wet space: No  
Addition: No  
Conversion: No

8199 Terrace Garden Drive, Terrace Park at Five Towns, West Lealman, St. Petersburg, Pinellas County, Florida, United States,

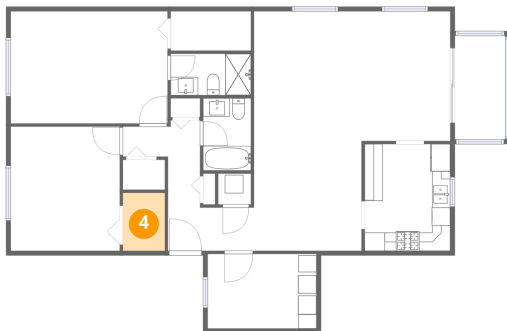
### 3 Floor 1 - Living Room



Dimensions: 21'5" x 14'2"  
Area: 303 sq. ft  
Counted as living area: Yes

Heated: Yes  
Finished: Yes  
Enclosed: Yes  
Contiguous: Yes  
Permitted: Yes  
Wet space: No  
Addition: No  
Conversion: No

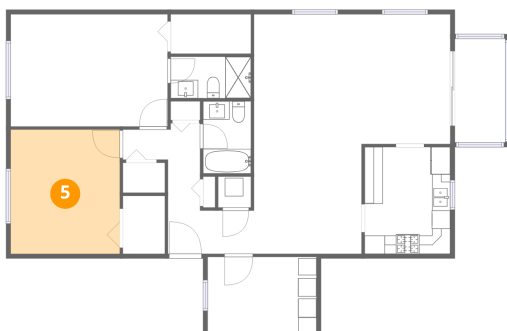
### 4 Floor 1 - W.I.C.



Dimensions: 4'7" x 6'4"  
Area: 29 sq. ft  
Counted as living area: Yes

Heated: Yes  
Finished: Yes  
Enclosed: Yes  
Contiguous: Yes  
Permitted: Yes  
Wet space: No  
Addition: No  
Conversion: No

### 5 Floor 1 - Bedroom

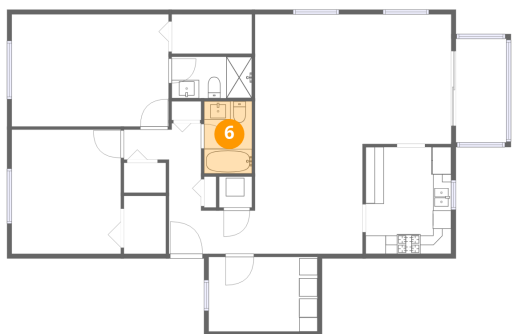


Dimensions: 11'11" x 13'7"  
Area: 161 sq. ft  
Counted as living area: Yes

Heated: Yes  
Finished: Yes  
Enclosed: Yes  
Contiguous: Yes  
Permitted: Yes  
Wet space: No  
Addition: No  
Conversion: No

8199 Terrace Garden Drive, Terrace Park at Five Towns, West Lealman, St. Petersburg, Pinellas County, Florida, United States,

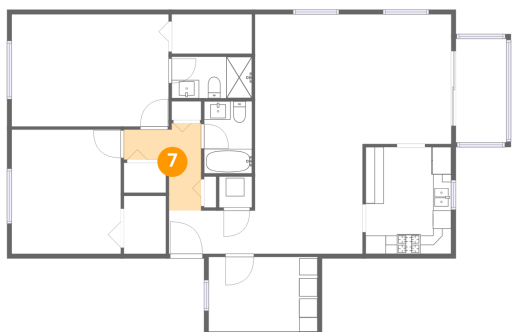
## 6 Floor 1 - Bath



Dimensions: 5'3" x 7'10"  
Area: 41 sq. ft  
Counted as living area: Yes

Heated: Yes  
Finished: Yes  
Enclosed: Yes  
Contiguous: Yes  
Permitted: Yes  
Wet space: Yes  
Addition: No  
Conversion: No

## 7 Floor 1 - Hall



Dimensions: 8'5" x 9'6"  
Area: 49 sq. ft  
Counted as living area: Yes

Heated: Yes  
Finished: Yes  
Enclosed: Yes  
Contiguous: Yes  
Permitted: Yes  
Wet space: No  
Addition: No  
Conversion: No

## 8 Floor 1 - Primary Bedroom



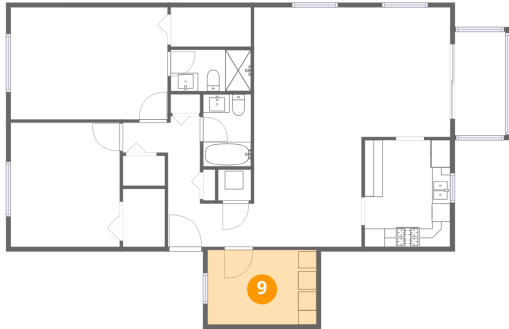
Dimensions: 17'1" x 12'3"  
Area: 209 sq. ft  
Counted as living area: Yes

Heated: Yes  
Finished: Yes  
Enclosed: Yes  
Contiguous: Yes  
Permitted: Yes  
Wet space: No  
Addition: No  
Conversion: No

## Home data report

8199 Terrace Garden Drive, Terrace Park at Five Towns, West Lealman, St. Petersburg, Pinellas County, Florida, United States,

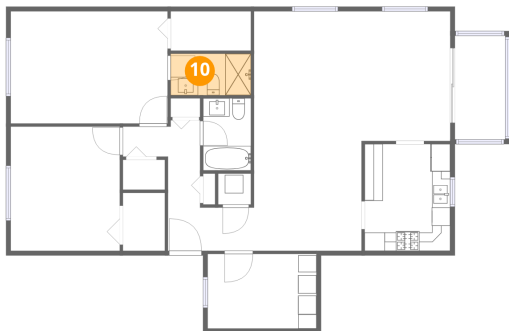
### 9 Floor 1 - Laundry



Dimensions: 11'10" x 8'2"  
Area: 96 sq. ft  
Counted as living area: Yes

Heated: Yes  
Finished: Yes  
Enclosed: Yes  
Contiguous: Yes  
Permitted: Yes  
Wet space: No  
Addition: No  
Conversion: No

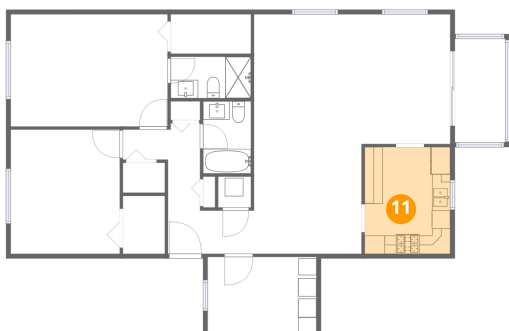
### 10 Floor 1 - Bath



Dimensions: 8'9" x 4'6"  
Area: 40 sq. ft  
Counted as living area: Yes

Heated: Yes  
Finished: Yes  
Enclosed: Yes  
Contiguous: Yes  
Permitted: Yes  
Wet space: Yes  
Addition: No  
Conversion: No

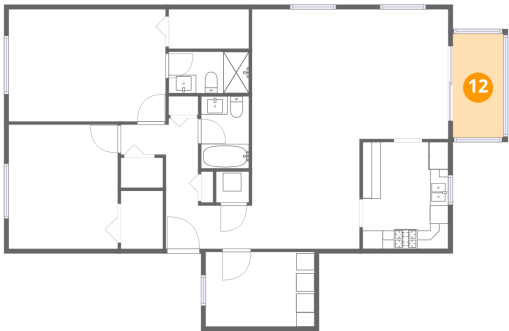
### 11 Floor 1 - Kitchen



Dimensions: 9'4" x 11'8"  
Area: 109 sq. ft  
Counted as living area: Yes

Heated: Yes  
Finished: Yes  
Enclosed: Yes  
Contiguous: Yes  
Permitted: Yes  
Wet space: No  
Addition: No  
Conversion: No

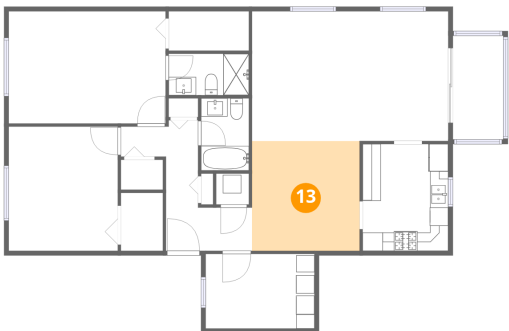
12 Floor 1 - Screened Balcony



Dimensions: 5'6" x 11'3"  
Area: 62 sq. ft  
Counted as living area: No

Heated: No  
Finished: No  
Enclosed: No  
Contiguous: Yes  
Permitted: Yes  
Wet space: No  
Addition: No  
Conversion: No

13 Floor 1 - Dining Area



Dimensions: 11'8" x 12'0"  
Area: 141 sq. ft  
Counted as living area: Yes

Heated: Yes  
Finished: Yes  
Enclosed: Yes  
Contiguous: Yes  
Permitted: Yes  
Wet space: No  
Addition: No  
Conversion: No