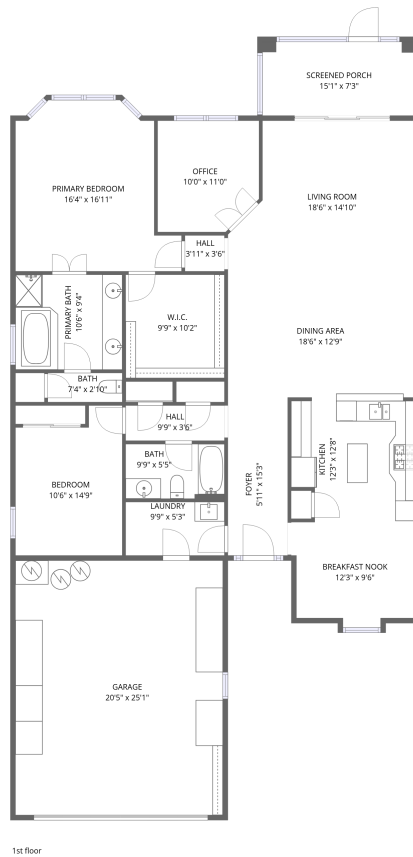


Home data report

213 Fieldstone Drive, Georgetown, TX, United States



Total Area: 1782 sq. ft

1st Floor: 1782 sq. ft

Excluded: Garage 513 sq. ft, Screened porch 110 sq. ft, Embedded window 4 sq. ft, Walls: 139 sq. ft

Property summary



1 Floors



2 Bedrooms

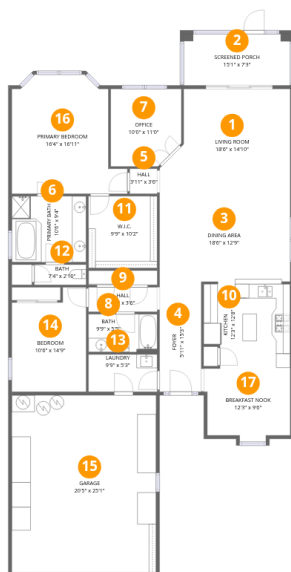


2 Bathrooms



1 Garages

213 Fieldstone Drive, Georgetown, TX, United States



Room dimensions

Floor 1

Total: 1782sqft Excluded: 627sqft

#		Dimensions	sqft	Counted as living area
1	Living Room	18'6" x 14'10"	275 sq. ft	Yes
2	Screened Porch	15'1" x 7'3"	110 sq. ft	No
3	Dining Area	18'6" x 12'9"	237 sq. ft	Yes
4	Foyer	5'11" x 15'3"	90 sq. ft	Yes
5	Hall	3'11" x 3'6"	14 sq. ft	Yes
6	Primary Bath	10'6" x 9'4"	98 sq. ft	Yes
7	Office	10'0" x 11'0"	110 sq. ft	Yes
8	Bath	9'9" x 5'5"	52 sq. ft	Yes
9	Hall	9'9" x 3'6"	34 sq. ft	Yes
10	Kitchen	12'3" x 12'8"	155 sq. ft	Yes
11	W.I.C.	9'9" x 10'2"	99 sq. ft	Yes

Home data report

213 Fieldstone Drive,Georgetown,TX,United States

#		Dimensions	sqft	Counted as living area
12	Bath	7'4" x 2'10"	21 sq. ft	Yes
13	Laundry	9'9" x 5'3"	51 sq. ft	Yes
14	Bedroom	10'6" x 14'9"	156 sq. ft	Yes
15	Garage	20'5" x 25'1"	513 sq. ft	No
16	Primary Bedroom	16'4" x 16'11"	276 sq. ft	Yes
17	Breakfast Nook	12'3" x 9'6"	116 sq. ft	Yes

1 Floor 1 - Living Room



Dimensions: 18'6" x 14'10"
Area: 275 sq. ft
Counted as living area: Yes

Heated: Yes
Finished: Yes
Enclosed: Yes
Contiguous: Yes
Permitted: Yes
Wet space: No
Addition: No
Conversion: No

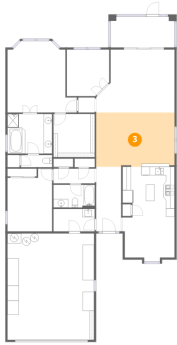
2 Floor 1 - Screened Porch



Dimensions: 15'1" x 7'3"
Area: 110 sq. ft
Counted as living area: No

Heated: No
Finished: No
Enclosed: No
Contiguous: Yes
Permitted: Yes
Wet space: No
Addition: No
Conversion: No

3 Floor 1 - Dining Area



Dimensions: 18'6" x 12'9"
Area: 237 sq. ft
Counted as living area: Yes

Heated: Yes
Finished: Yes
Enclosed: Yes
Contiguous: Yes
Permitted: Yes
Wet space: No
Addition: No
Conversion: No

4 Floor 1 - Foyer



Dimensions: 5'11" x 15'3"
Area: 90 sq. ft
Counted as living area: Yes

Heated: Yes
Finished: Yes
Enclosed: Yes
Contiguous: Yes
Permitted: Yes
Wet space: No
Addition: No
Conversion: No

5 Floor 1 - Hall



Dimensions: 3'11" x 3'6"
Area: 14 sq. ft
Counted as living area: Yes

Heated: Yes
Finished: Yes
Enclosed: Yes
Contiguous: Yes
Permitted: Yes
Wet space: No
Addition: No
Conversion: No

6 Floor 1 - Primary Bath



Dimensions: 10'6" x 9'4"
Area: 98 sq. ft
Counted as living area: Yes

Heated: Yes
Finished: Yes
Enclosed: Yes
Contiguous: Yes
Permitted: Yes
Wet space: Yes
Addition: No
Conversion: No

7 Floor 1 - Office



Dimensions: 10'0" x 11'0"
Area: 110 sq. ft
Counted as living area: Yes

Heated: Yes
Finished: Yes
Enclosed: Yes
Contiguous: Yes
Permitted: Yes
Wet space: No
Addition: No
Conversion: No

8 Floor 1 - Bath



Dimensions: 9'9" x 5'5"
Area: 52 sq. ft
Counted as living area: Yes

Heated: Yes
Finished: Yes
Enclosed: Yes
Contiguous: Yes
Permitted: Yes
Wet space: Yes
Addition: No
Conversion: No

9 Floor 1 - Hall



Dimensions: 9'9" x 3'6"
Area: 34 sq. ft
Counted as living area: Yes

Heated: Yes
Finished: Yes
Enclosed: Yes
Contiguous: Yes
Permitted: Yes
Wet space: No
Addition: No
Conversion: No

10 Floor 1 - Kitchen



Dimensions: 12'3" x 12'8"
Area: 155 sq. ft
Counted as living area: Yes

Heated: Yes
Finished: Yes
Enclosed: Yes
Contiguous: Yes
Permitted: Yes
Wet space: No
Addition: No
Conversion: No

11 Floor 1 - W.I.C.



Dimensions: 9'9" x 10'2"
Area: 99 sq. ft
Counted as living area: Yes

Heated: Yes
Finished: Yes
Enclosed: Yes
Contiguous: Yes
Permitted: Yes
Wet space: No
Addition: No
Conversion: No

12 Floor 1 - Bath



Dimensions: 7'4" x 2'10"
Area: 21 sq. ft
Counted as living area: Yes

Heated: Yes
Finished: Yes
Enclosed: Yes
Contiguous: Yes
Permitted: Yes
Wet space: Yes
Addition: No
Conversion: No

13 Floor 1 - Laundry



Dimensions: 9'9" x 5'3"
Area: 51 sq. ft
Counted as living area: Yes

Heated: Yes
Finished: Yes
Enclosed: Yes
Contiguous: Yes
Permitted: Yes
Wet space: No
Addition: No
Conversion: No

14 Floor 1 - Bedroom



Dimensions: 10'6" x 14'9"
Area: 156 sq. ft
Counted as living area: Yes

Heated: Yes
Finished: Yes
Enclosed: Yes
Contiguous: Yes
Permitted: Yes
Wet space: No
Addition: No
Conversion: No

15 Floor 1 - Garage



Dimensions: 20'5" x 25'1"
Area: 513 sq. ft
Counted as living area: No

Heated: No
Finished: No
Enclosed: Yes
Contiguous: Yes
Permitted: Yes
Wet space: No
Addition: No
Conversion: No

16 Floor 1 - Primary Bedroom



Dimensions: 16'4" x 16'11"
Area: 276 sq. ft
Counted as living area: Yes

Heated: Yes
Finished: Yes
Enclosed: Yes
Contiguous: Yes
Permitted: Yes
Wet space: No
Addition: No
Conversion: No

17 Floor 1 - Breakfast Nook



Dimensions: 12'3" x 9'6"
Area: 116 sq. ft
Counted as living area: Yes

Heated: Yes
Finished: Yes
Enclosed: Yes
Contiguous: Yes
Permitted: Yes
Wet space: No
Addition: No
Conversion: No