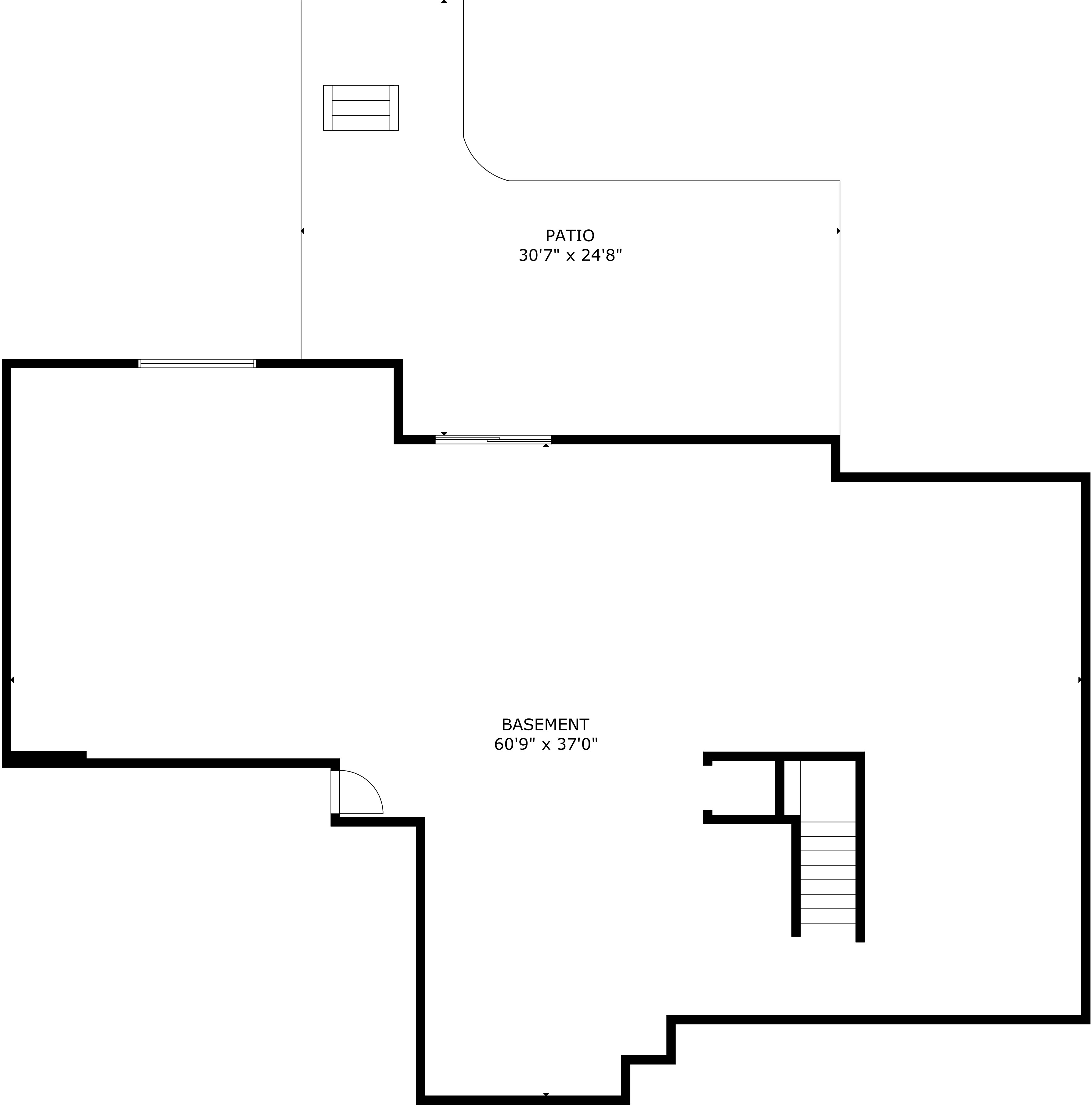


704 Orangeburgh Rd, River Vale, NJ 07675



BASEMENT
60'9" x 37'0"

PATIO
30'7" x 24'8"

GROSS INTERNAL AREA
TOTAL: 5,072 sq.ft

LOWER FLOOR: 1,762 sq.ft, MAIN FLOOR: 1,767 sq.ft, SECOND FLOOR: 1,543 sq.ft
EXCLUDED AREA: GARAGE: 600 sq.ft, DECK: 318 sq.ft, PATIO: 512 sq.ft

THIS FLOOR PLAN IS PROVIDED FOR ILLUSTRATION PURPOSES ONLY WITH THE PERMISSION OF THE SELLER. ROOM
POSITIONS AND DIMENSIONS ARE APPROXIMATE AND ARE NOT GUARANTEED TO BE EXACT OR TO SCALE. THE
BUYER SHOULD CONFIRM MEASUREMENTS FOR ACCURACY.