

Total Area: 1853 sq. ft

1st Floor: 798 sq. ft, 2nd Floor: 1055 sq. ft

Excluded: Garage 335 sq. ft, Walls: 162 sq. ft


Property summary



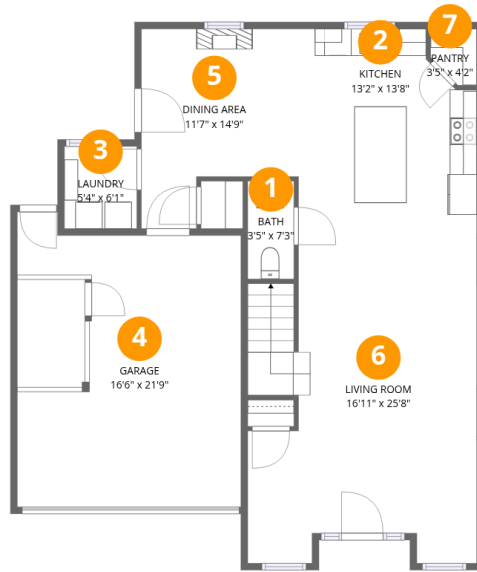
Home data report

105 Brooks St, Terrell, TX, US



 **1**
Half baths

 **1**
Garages



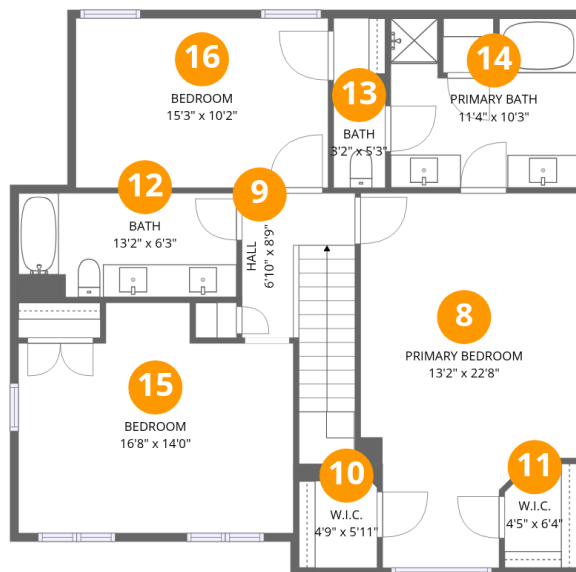
Room dimensions

Floor 1

Total: 798 sqft

Excluded: 335 sqft

#		Dimensions	sqft	Counted as living area
1	Bath	3'5" x 7'3"	25 sq. ft	Yes
2	Kitchen	13'2" x 13'8"	180 sq. ft	Yes
3	Laundry	5'4" x 6'1"	32 sq. ft	Yes
4	Garage	16'6" x 21'9"	358 sq. ft	No
5	Dining Area	11'7" x 14'9"	170 sq. ft	Yes
6	Living Room	16'11" x 25'8"	434 sq. ft	Yes
7	Pantry	3'5" x 4'2"	14 sq. ft	Yes



Room dimensions

Floor 2

Total: 1055 sqft Excluded: 0 sqft

#		Dimensions	sqft	Counted as living area
8	Primary Bedroom	13'2" x 22'8"	298 sq. ft	Yes
9	Hall	6'10" x 8'9"	60 sq. ft	Yes
10	W.I.C.	4'9" x 5'11"	28 sq. ft	Yes
11	W.I.C.	4'5" x 6'4"	28 sq. ft	Yes
12	Bath	13'2" x 6'3"	83 sq. ft	Yes
13	Bath	3'2" x 5'3"	16 sq. ft	Yes
14	Primary Bath	11'4" x 10'3"	116 sq. ft	Yes
15	Bedroom	16'8" x 14'0"	233 sq. ft	Yes
16	Bedroom	15'3" x 10'2"	155 sq. ft	Yes



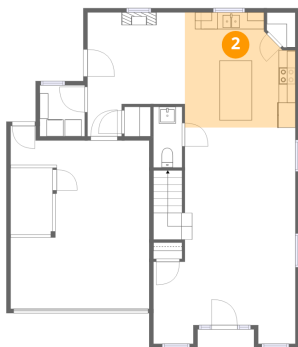
1 Floor 1 - Bath



Dimensions: 3'5" x 7'3"
Area: 25 sq. ft
Counted as living area: Yes

Heated: Yes
Finished: Yes
Enclosed: Yes
Contiguous: Yes
Permitted: Yes
Wet space: Yes
Addition: No
Conversion: No

2 Floor 1 - Kitchen

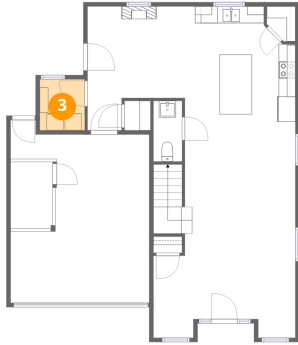


Dimensions: 13'2" x 13'8"
Area: 180 sq. ft
Counted as living area: Yes

Heated: Yes
Finished: Yes
Enclosed: Yes
Contiguous: Yes
Permitted: Yes
Wet space: No
Addition: No
Conversion: No



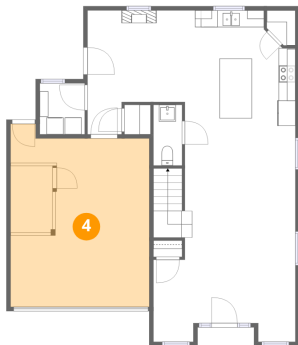
3 Floor 1 - Laundry



Dimensions: 5'4" x 6'1"
Area: 32 sq. ft
Counted as living area: Yes

Heated: Yes
Finished: Yes
Enclosed: Yes
Contiguous: Yes
Permitted: Yes
Wet space: No
Addition: No
Conversion: No

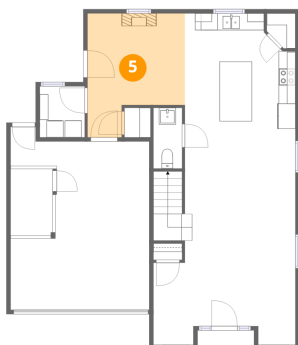
4 Floor 1 - Garage



Dimensions: 16'6" x 21'9"
Area: 358 sq. ft
Counted as living area: No

Heated: No
Finished: No
Enclosed: Yes
Contiguous: Yes
Permitted: Yes
Wet space: No
Addition: No
Conversion: No

5 Floor 1 - Dining Area

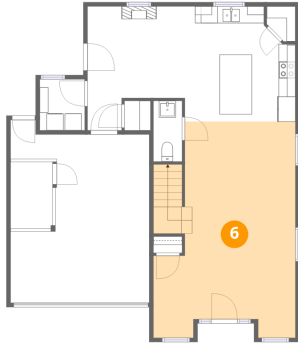


Dimensions: 11'7" x 14'9"
Area: 170 sq. ft
Counted as living area: Yes

Heated: Yes
Finished: Yes
Enclosed: Yes
Contiguous: Yes
Permitted: Yes
Wet space: No
Addition: No
Conversion: No



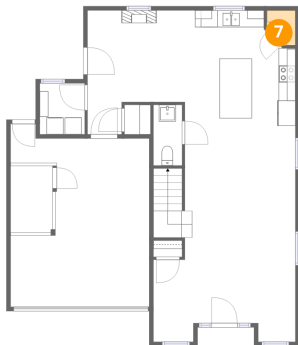
6 Floor 1 - Living Room



Dimensions: 16'11" x 25'8"
Area: 434 sq. ft
Counted as living area: Yes

Heated: Yes
Finished: Yes
Enclosed: Yes
Contiguous: Yes
Permitted: Yes
Wet space: No
Addition: No
Conversion: No

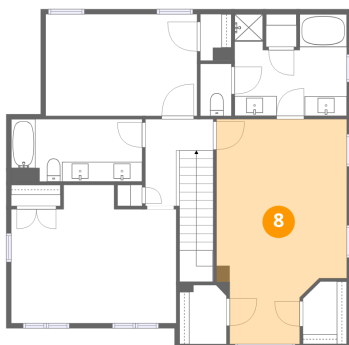
7 Floor 1 - Pantry



Dimensions: 3'5" x 4'2"
Area: 14 sq. ft
Counted as living area: Yes

Heated: Yes
Finished: Yes
Enclosed: Yes
Contiguous: Yes
Permitted: Yes
Wet space: No
Addition: No
Conversion: No

8 Floor 2 - Primary Bedroom

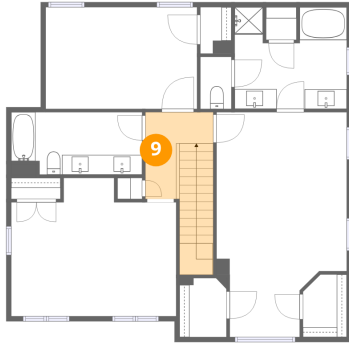


Dimensions: 13'2" x 22'8"
Area: 298 sq. ft
Counted as living area: Yes

Heated: Yes
Finished: Yes
Enclosed: Yes
Contiguous: Yes
Permitted: Yes
Wet space: No
Addition: No
Conversion: No



9 Floor 2 - Hall



Dimensions: 6'10" x 8'9"
Area: 60 sq. ft
Counted as living area: Yes

Heated: Yes
Finished: Yes
Enclosed: Yes
Contiguous: Yes
Permitted: Yes
Wet space: No
Addition: No
Conversion: No

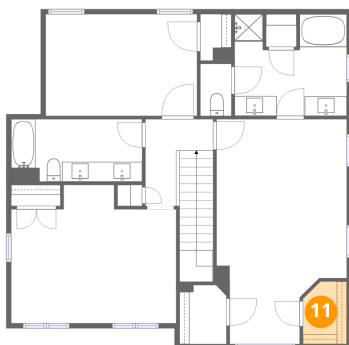
10 Floor 2 - W.I.C.



Dimensions: 4'9" x 5'11"
Area: 28 sq. ft
Counted as living area: Yes

Heated: Yes
Finished: Yes
Enclosed: Yes
Contiguous: Yes
Permitted: Yes
Wet space: No
Addition: No
Conversion: No

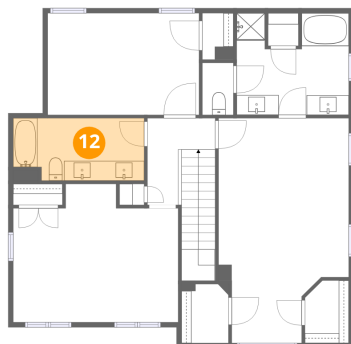
11 Floor 2 - W.I.C.



Dimensions: 4'5" x 6'4"
Area: 28 sq. ft
Counted as living area: Yes

Heated: Yes
Finished: Yes
Enclosed: Yes
Contiguous: Yes
Permitted: Yes
Wet space: No
Addition: No
Conversion: No

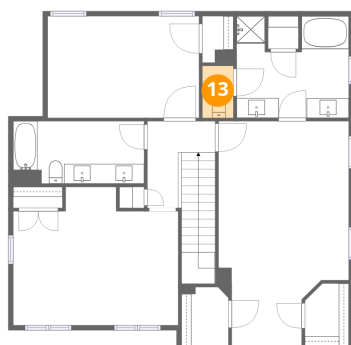
12 Floor 2 - Bath



Dimensions: 13'2" x 6'3"
Area: 83 sq. ft
Counted as living area: Yes

Heated: Yes
Finished: Yes
Enclosed: Yes
Contiguous: Yes
Permitted: Yes
Wet space: Yes
Addition: No
Conversion: No

13 Floor 2 - Bath



Dimensions: 3'2" x 5'3"
Area: 16 sq. ft
Counted as living area: Yes

Heated: Yes
Finished: Yes
Enclosed: Yes
Contiguous: Yes
Permitted: Yes
Wet space: Yes
Addition: No
Conversion: No

14 Floor 2 - Primary Bath



Dimensions: 11'4" x 10'3"
Area: 116 sq. ft
Counted as living area: Yes

Heated: Yes
Finished: Yes
Enclosed: Yes
Contiguous: Yes
Permitted: Yes
Wet space: Yes
Addition: No
Conversion: No



15 Floor 2 - Bedroom



Dimensions: 16'8" x 14'0"
Area: 233 sq. ft
Counted as living area: Yes

Heated: Yes
Finished: Yes
Enclosed: Yes
Contiguous: Yes
Permitted: Yes
Wet space: No
Addition: No
Conversion: No

16 Floor 2 - Bedroom



Dimensions: 15'3" x 10'2"
Area: 155 sq. ft
Counted as living area: Yes

Heated: Yes
Finished: Yes
Enclosed: Yes
Contiguous: Yes
Permitted: Yes
Wet space: No
Addition: No
Conversion: No