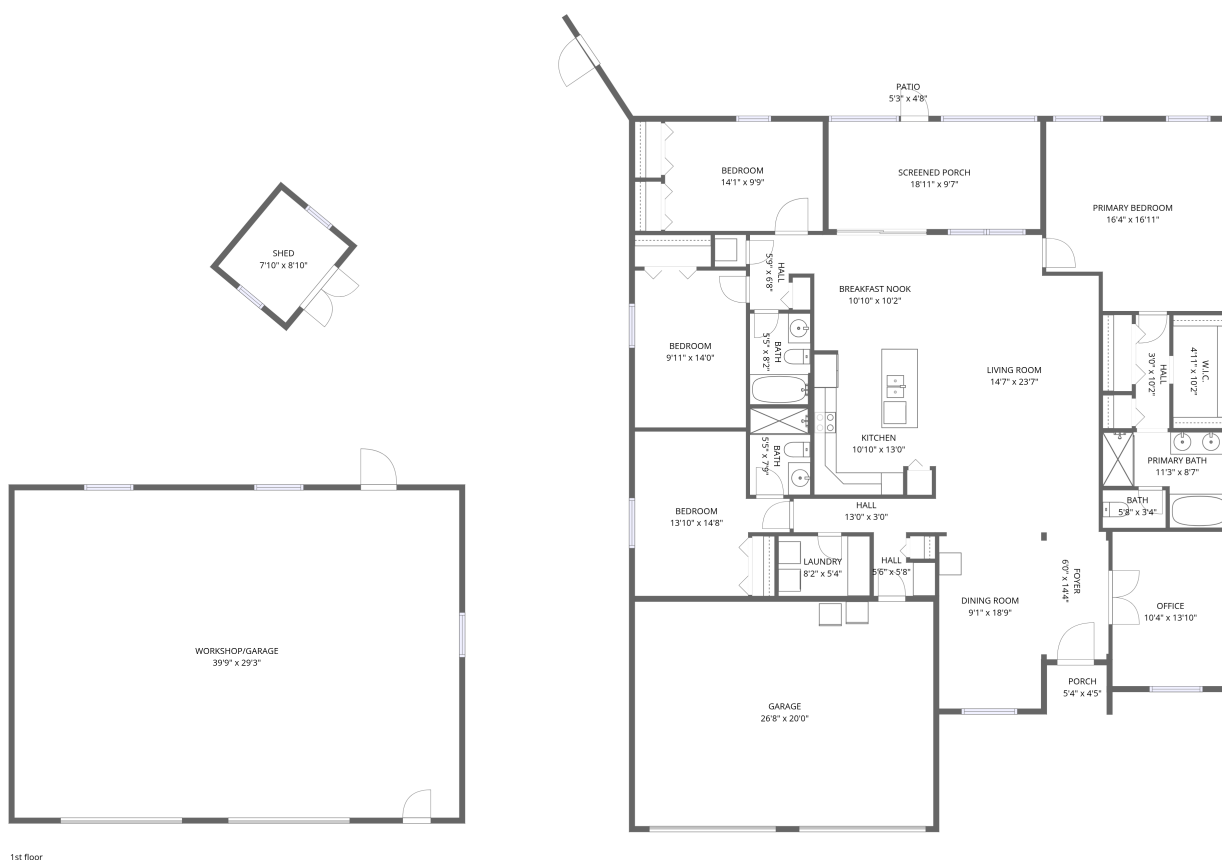


Home data report

13169 Santee Street, Spring Hill, Hernando County, Florida,
United States, 34609



Total Area: 2255 sq. ft

1st Floor: 2255 sq. ft

Excluded: Garage 535 sq. ft, Screened porch 182 sq. ft, Porch 24 sq. ft, Patio 25 sq. ft, Workshop/garage 1162 sq. ft, Shed 70 sq. ft, Walls: 246 sq. ft

Property summary



1
Floors



4
Bedrooms



3
Bathrooms



1
Garages

Home data report

13169 Santee Street, Spring Hill, Hernando County, Florida, United States, 34609



Room dimensions

Floor 1

Total:2255sqft

Excluded: 1998sqft

#		Dimensions	sqft	Counted as living area
1	Foyer	6'0" x 14'4"	87 sq. ft	Yes
2	Porch	5'4" x 4'5"	23 sq. ft	No
3	Living Room	14'7" x 23'7"	343 sq. ft	Yes
4	Primary Bath	11'3" x 8'7"	96 sq. ft	Yes
5	Hall	5'9" x 6'8"	38 sq. ft	Yes
6	Kitchen	10'10" x 13'0"	141 sq. ft	Yes
7	Shed	7'10" x 8'10"	69 sq. ft	No
8	Bath	5'5" x 8'2"	44 sq. ft	Yes
9	Dining Room	9'1" x 18'9"	170 sq. ft	Yes
10	Primary Bedroom	16'4" x 16'11"	276 sq. ft	Yes
11	Screened Porch	18'11" x 9'7"	181 sq. ft	No

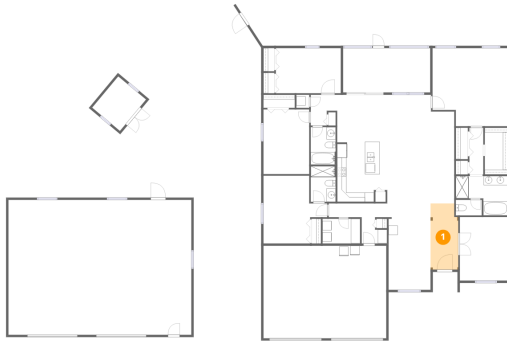
Home data report

**13169 Santee Street, Spring Hill, Hernando County, Florida,
United States, 34609**

#		Dimensions	sqft	Counted as living area
12	Garage	26'8" x 20'0"	533 sq. ft	No
13	Workshop/Garage	39'9" x 29'3"	1162 sq. ft	No
14	Bedroom	14'1" x 9'9"	137 sq. ft	Yes
15	Bedroom	13'10" x 14'8"	203 sq. ft	Yes
16	Breakfast Nook	10'10" x 10'2"	110 sq. ft	Yes
17	Hall	5'6" x 5'8"	31 sq. ft	Yes
18	Bath	5'5" x 7'9"	42 sq. ft	Yes
19	Hall	3'0" x 10'2"	31 sq. ft	Yes
20	Laundry	8'2" x 5'4"	44 sq. ft	Yes
21	Hall	13'0" x 3'0"	39 sq. ft	Yes
22	Bedroom	9'11" x 14'0"	139 sq. ft	Yes
23	W.I.C.	4'11" x 10'2"	50 sq. ft	Yes
24	Office	10'4" x 13'10"	143 sq. ft	Yes
25	Patio	5'3" x 4'8"	25 sq. ft	No
26	Bath	5'8" x 3'4"	19 sq. ft	Yes

13169 Santee Street, Spring Hill, Hernando County, Florida,
United States, 34609

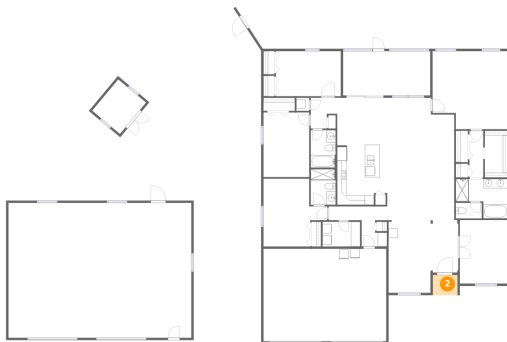
1 Floor 1 - Foyer



Dimensions: 6'0" x 14'4"
Area: 87 sq. ft
Counted as living area: Yes

Heated: Yes
Finished: Yes
Enclosed: Yes
Contiguous: Yes
Permitted: Yes
Wet space: No
Addition: No
Conversion: No

2 Floor 1 - Porch

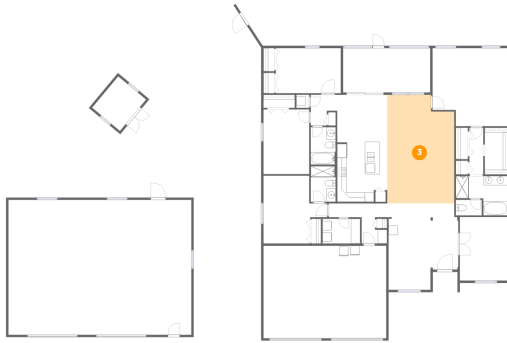


Dimensions: 5'4" x 4'5"
Area: 23 sq. ft
Counted as living area: No

Heated: No
Finished: No
Enclosed: No
Contiguous: Yes
Permitted: Yes
Wet space: No
Addition: No
Conversion: No

13169 Santee Street, Spring Hill, Hernando County, Florida,
United States, 34609

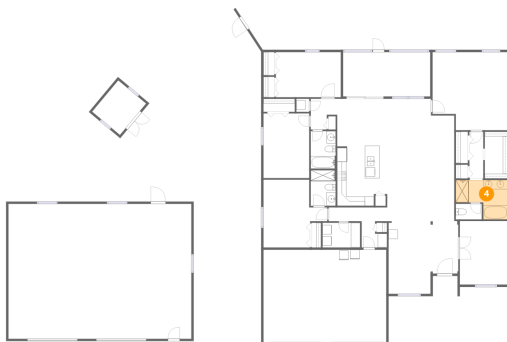
3 Floor 1 - Living Room



Dimensions: 14'7" x 23'7"
Area: 343 sq. ft
Counted as living area: Yes

Heated: Yes
Finished: Yes
Enclosed: Yes
Contiguous: Yes
Permitted: Yes
Wet space: No
Addition: No
Conversion: No

4 Floor 1 - Primary Bath



Dimensions: 11'3" x 8'7"
Area: 96 sq. ft
Counted as living area: Yes

Heated: Yes
Finished: Yes
Enclosed: Yes
Contiguous: Yes
Permitted: Yes
Wet space: Yes
Addition: No
Conversion: No

5 Floor 1 - Hall

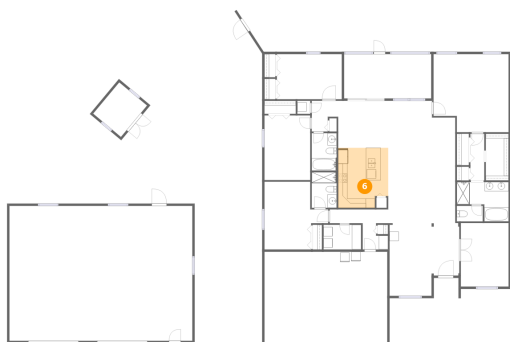


Dimensions: 5'9" x 6'8"
Area: 38 sq. ft
Counted as living area: Yes

Heated: Yes
Finished: Yes
Enclosed: Yes
Contiguous: Yes
Permitted: Yes
Wet space: No
Addition: No
Conversion: No

13169 Santee Street, Spring Hill, Hernando County, Florida,
United States, 34609

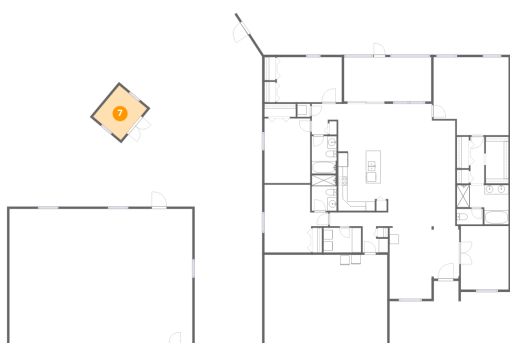
6 Floor 1 - Kitchen



Dimensions: 10'10" x 13'0"
Area: 141 sq. ft
Counted as living area: Yes

Heated: Yes
Finished: Yes
Enclosed: Yes
Contiguous: Yes
Permitted: Yes
Wet space: No
Addition: No
Conversion: No

7 Floor 1 - Shed



Dimensions: 7'10" x 8'10"
Area: 69 sq. ft
Counted as living area: No

Heated: No
Finished: No
Enclosed: No
Contiguous: Yes
Permitted: Yes
Wet space: No
Addition: No
Conversion: No

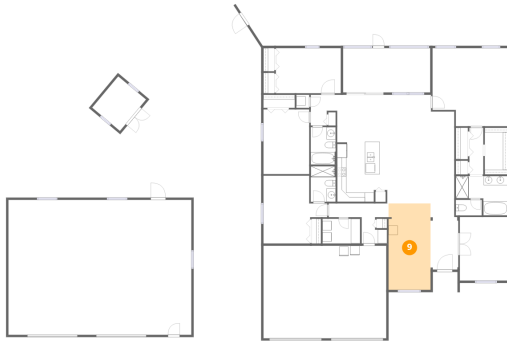
8 Floor 1 - Bath



Dimensions: 5'5" x 8'2"
Area: 44 sq. ft
Counted as living area: Yes

Heated: Yes
Finished: Yes
Enclosed: Yes
Contiguous: Yes
Permitted: Yes
Wet space: Yes
Addition: No
Conversion: No

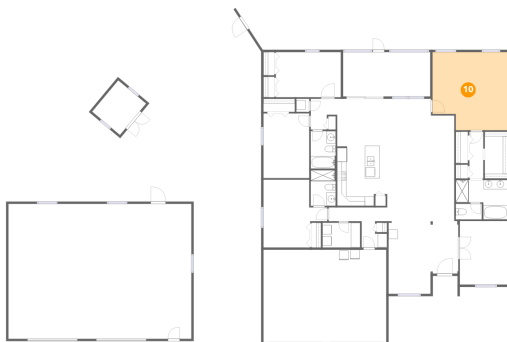
9 Floor 1 - Dining Room



Dimensions: 9'1" x 18'9"
Area: 170 sq. ft
Counted as living area: Yes

Heated: Yes
Finished: Yes
Enclosed: Yes
Contiguous: Yes
Permitted: Yes
Wet space: No
Addition: No
Conversion: No

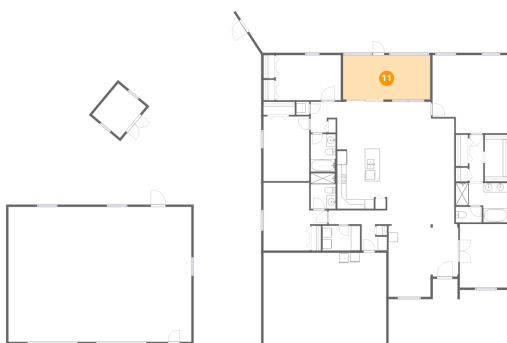
10 Floor 1 - Primary Bedroom



Dimensions: 16'4" x 16'11"
Area: 276 sq. ft
Counted as living area: Yes

Heated: Yes
Finished: Yes
Enclosed: Yes
Contiguous: Yes
Permitted: Yes
Wet space: No
Addition: No
Conversion: No

11 Floor 1 - Screened Porch

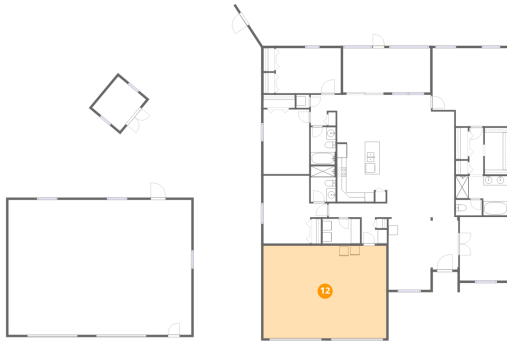


Dimensions: 18'11" x 9'7"
Area: 181 sq. ft
Counted as living area: No

Heated: No
Finished: No
Enclosed: No
Contiguous: Yes
Permitted: Yes
Wet space: No
Addition: No
Conversion: No

13169 Santee Street, Spring Hill, Hernando County, Florida,
United States, 34609

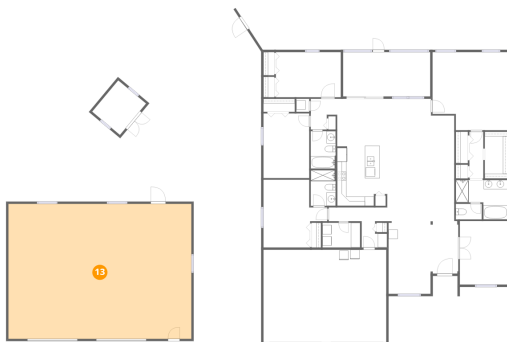
12 Floor 1 - Garage



Dimensions: 26'8" x 20'0"
Area: 533 sq. ft
Counted as living area: No

Heated: No
Finished: No
Enclosed: Yes
Contiguous: Yes
Permitted: Yes
Wet space: No
Addition: No
Conversion: No

13 Floor 1 - Workshop/Garage



Dimensions: 39'9" x 29'3"
Area: 1162 sq. ft
Counted as living area: No

Heated: No
Finished: No
Enclosed: Yes
Contiguous: Yes
Permitted: Yes
Wet space: No
Addition: No
Conversion: No

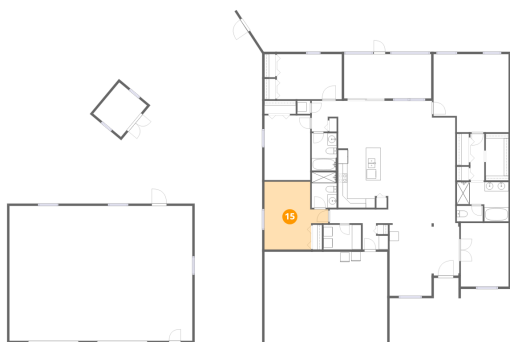
14 Floor 1 - Bedroom



Dimensions: 14'1" x 9'9"
Area: 137 sq. ft
Counted as living area: Yes

Heated: Yes
Finished: Yes
Enclosed: Yes
Contiguous: Yes
Permitted: Yes
Wet space: No
Addition: No
Conversion: No

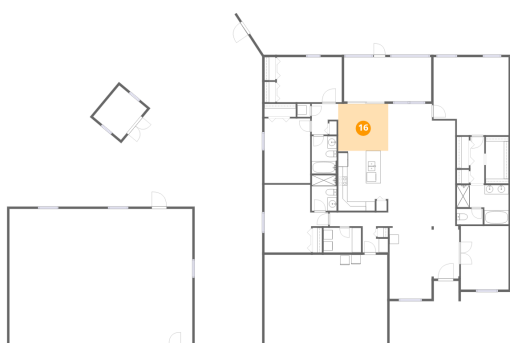
15 Floor 1 - Bedroom



Dimensions: 13'10" x 14'8"
Area: 203 sq. ft
Counted as living area: Yes

Heated: Yes
Finished: Yes
Enclosed: Yes
Contiguous: Yes
Permitted: Yes
Wet space: No
Addition: No
Conversion: No

16 Floor 1 - Breakfast Nook



Dimensions: 10'10" x 10'2"
Area: 110 sq. ft
Counted as living area: Yes

Heated: Yes
Finished: Yes
Enclosed: Yes
Contiguous: Yes
Permitted: Yes
Wet space: No
Addition: No
Conversion: No

17 Floor 1 - Hall



Dimensions: 5'6" x 5'8"
Area: 31 sq. ft
Counted as living area: Yes

Heated: Yes
Finished: Yes
Enclosed: Yes
Contiguous: Yes
Permitted: Yes
Wet space: No
Addition: No
Conversion: No

18 Floor 1 - Bath



Dimensions: 5'5" x 7'9"
Area: 42 sq. ft
Counted as living area: Yes

Heated: Yes
Finished: Yes
Enclosed: Yes
Contiguous: Yes
Permitted: Yes
Wet space: Yes
Addition: No
Conversion: No

19 Floor 1 - Hall



Dimensions: 3'0" x 10'2"
Area: 31 sq. ft
Counted as living area: Yes

Heated: Yes
Finished: Yes
Enclosed: Yes
Contiguous: Yes
Permitted: Yes
Wet space: No
Addition: No
Conversion: No

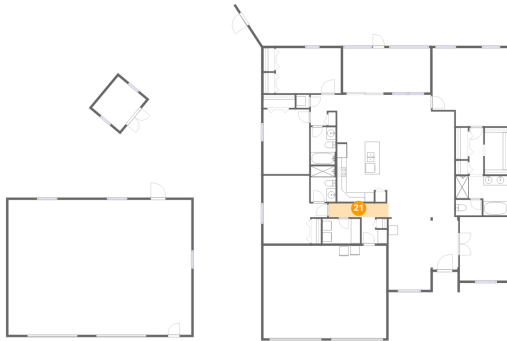
20 Floor 1 - Laundry



Dimensions: 8'2" x 5'4"
Area: 44 sq. ft
Counted as living area: Yes

Heated: Yes
Finished: Yes
Enclosed: Yes
Contiguous: Yes
Permitted: Yes
Wet space: No
Addition: No
Conversion: No

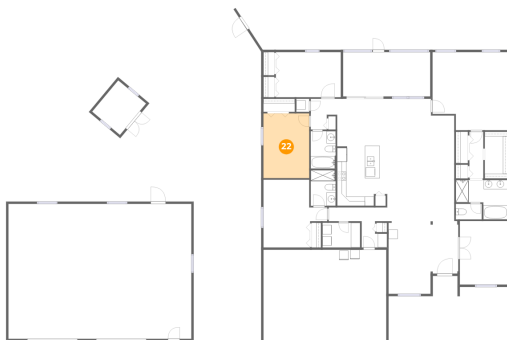
21 Floor 1 - Hall



Dimensions: 13'0" x 3'0"
Area: 39 sq. ft
Counted as living area: Yes

Heated: Yes
Finished: Yes
Enclosed: Yes
Contiguous: Yes
Permitted: Yes
Wet space: No
Addition: No
Conversion: No

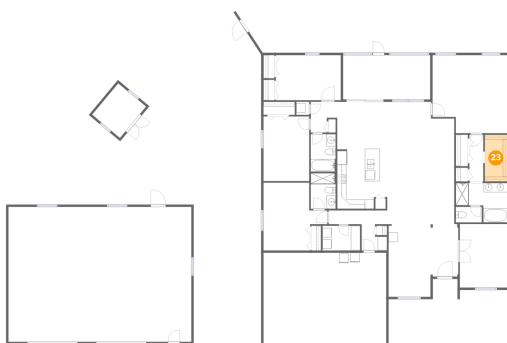
22 Floor 1 - Bedroom



Dimensions: 9'11" x 14'0"
Area: 139 sq. ft
Counted as living area: Yes

Heated: Yes
Finished: Yes
Enclosed: Yes
Contiguous: Yes
Permitted: Yes
Wet space: No
Addition: No
Conversion: No

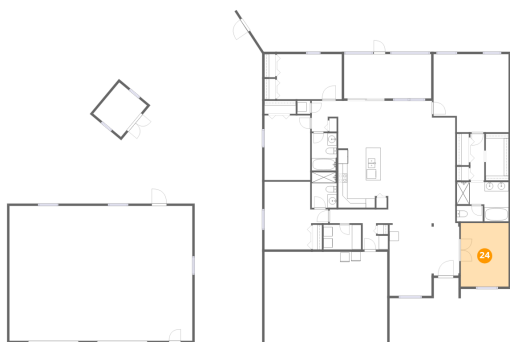
23 Floor 1 - W.I.C.



Dimensions: 4'11" x 10'2"
Area: 50 sq. ft
Counted as living area: Yes

Heated: Yes
Finished: Yes
Enclosed: Yes
Contiguous: Yes
Permitted: Yes
Wet space: No
Addition: No
Conversion: No

24 Floor 1 - Office



Dimensions: 10'4" x 13'10"
Area: 143 sq. ft
Counted as living area: Yes

Heated: Yes
Finished: Yes
Enclosed: Yes
Contiguous: Yes
Permitted: Yes
Wet space: No
Addition: No
Conversion: No

25 Floor 1 - Patio



Dimensions: 5'3" x 4'8"
Area: 25 sq. ft
Counted as living area: No

Heated: No
Finished: No
Enclosed: No
Contiguous: Yes
Permitted: Yes
Wet space: No
Addition: No
Conversion: No

26 Floor 1 - Bath



Dimensions: 5'8" x 3'4"
Area: 19 sq. ft
Counted as living area: Yes

Heated: Yes
Finished: Yes
Enclosed: Yes
Contiguous: Yes
Permitted: Yes
Wet space: Yes
Addition: No
Conversion: No