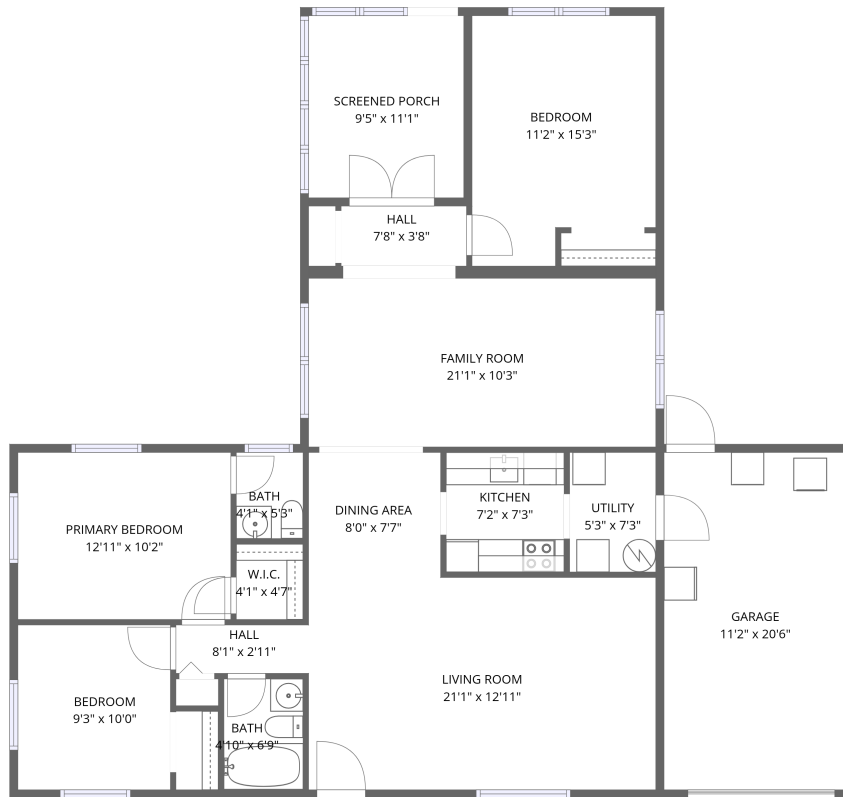


Home data report

1035 Dorado Dr, St. Augustine, FL, US



1st floor

Total Area: 1243 sq. ft

1st Floor: 1243 sq. ft

Excluded: Garage 229 sq. ft, Screened porch 105 sq. ft, Walls: 119 sq. ft

Property summary

 **1** Floors

 **3** Bedrooms

 **1** Bathrooms

Home data report

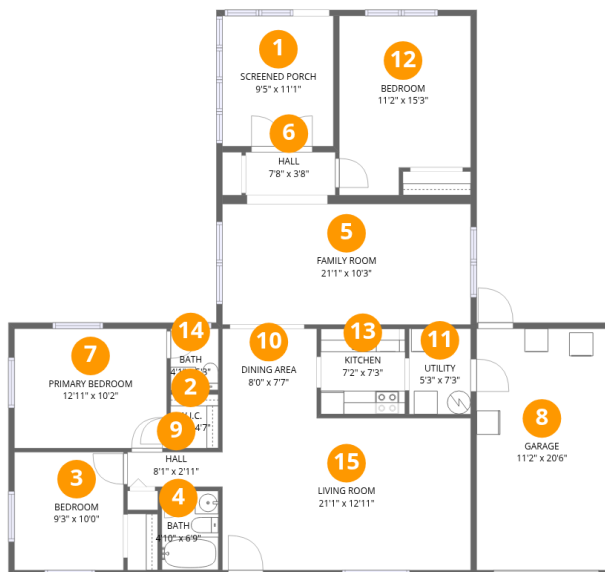
1035 Dorado Dr, St. Augustine, FL, US

 **1**
Half baths

 **1**
Garages

Home data report

1035 Dorado Dr, St. Augustine, FL, US



Room dimensions

Floor 1

Total: 1243sqft Excluded: 334sqft

#		Dimensions	sqft	Counted as living area
1	Screened Porch	9'5" x 11'1"	105 sq. ft	No
2	W.I.C.	4'1" x 4'7"	19 sq. ft	Yes
3	Bedroom	9'3" x 10'0"	93 sq. ft	Yes
4	Bath	4'10" x 6'9"	33 sq. ft	Yes
5	Family Room	21'1" x 10'3"	217 sq. ft	Yes
6	Hall	7'8" x 3'8"	28 sq. ft	Yes
7	Primary Bedroom	12'11" x 10'2"	132 sq. ft	Yes
8	Garage	11'2" x 20'6"	229 sq. ft	No
9	Hall	8'1" x 2'11"	24 sq. ft	Yes
10	Dining Area	8'0" x 7'7"	61 sq. ft	Yes
11	Utility	5'3" x 7'3"	38 sq. ft	Yes

Home data report

1035 Dorado Dr, St. Augustine, FL, US

#		Dimensions	sqft	Counted as living area
12	Bedroom	11'2" x 15'3"	156 sq. ft	Yes
13	Kitchen	7'2" x 7'3"	52 sq. ft	Yes
14	Bath	4'1" x 5'3"	21 sq. ft	Yes
15	Living Room	21'1" x 12'11"	273 sq. ft	Yes

1 Floor 1 - Screened Porch



Dimensions: 9'5" x 11'1"
Area: 105 sq. ft
Counted as living area: No

Heated: No
Finished: No
Enclosed: No
Contiguous: Yes
Permitted: Yes
Wet space: No
Addition: No
Conversion: No

2 Floor 1 - W.I.C.



Dimensions: 4'1" x 4'7"
Area: 19 sq. ft
Counted as living area: Yes

Heated: Yes
Finished: Yes
Enclosed: Yes
Contiguous: Yes
Permitted: Yes
Wet space: No
Addition: No
Conversion: No

3 Floor 1 - Bedroom



Dimensions: 9'3" x 10'0"
Area: 93 sq. ft
Counted as living area: Yes

Heated: Yes
Finished: Yes
Enclosed: Yes
Contiguous: Yes
Permitted: Yes
Wet space: No
Addition: No
Conversion: No

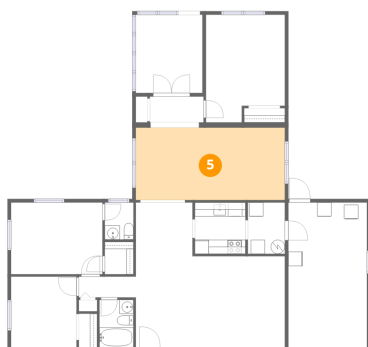
4 Floor 1 - Bath



Dimensions: 4'10" x 6'9"
Area: 33 sq. ft
Counted as living area: Yes

Heated: Yes
Finished: Yes
Enclosed: Yes
Contiguous: Yes
Permitted: Yes
Wet space: Yes
Addition: No
Conversion: No

5 Floor 1 - Family Room



Dimensions: 21'1" x 10'3"
Area: 217 sq. ft
Counted as living area: Yes

Heated: Yes
Finished: Yes
Enclosed: Yes
Contiguous: Yes
Permitted: Yes
Wet space: No
Addition: No
Conversion: No

6 Floor 1 - Hall



Dimensions: 7'8" x 3'8"
Area: 28 sq. ft
Counted as living area: Yes

Heated: Yes
Finished: Yes
Enclosed: Yes
Contiguous: Yes
Permitted: Yes
Wet space: No
Addition: No
Conversion: No

7 Floor 1 - Primary Bedroom



Dimensions: 12'11" x 10'2"
Area: 132 sq. ft
Counted as living area: Yes

Heated: Yes
Finished: Yes
Enclosed: Yes
Contiguous: Yes
Permitted: Yes
Wet space: No
Addition: No
Conversion: No

8 Floor 1 - Garage



Dimensions: 11'2" x 20'6"
Area: 229 sq. ft
Counted as living area: No

Heated: No
Finished: No
Enclosed: Yes
Contiguous: Yes
Permitted: Yes
Wet space: No
Addition: No
Conversion: No

9 Floor 1 - Hall



Dimensions: 8'1" x 2'11"
Area: 24 sq. ft
Counted as living area: Yes

Heated: Yes
Finished: Yes
Enclosed: Yes
Contiguous: Yes
Permitted: Yes
Wet space: No
Addition: No
Conversion: No

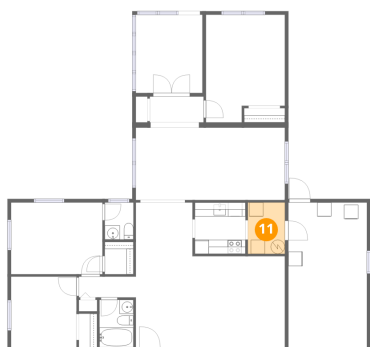
10 Floor 1 - Dining Area



Dimensions: 8'0" x 7'7"
Area: 61 sq. ft
Counted as living area: Yes

Heated: Yes
Finished: Yes
Enclosed: Yes
Contiguous: Yes
Permitted: Yes
Wet space: No
Addition: No
Conversion: No

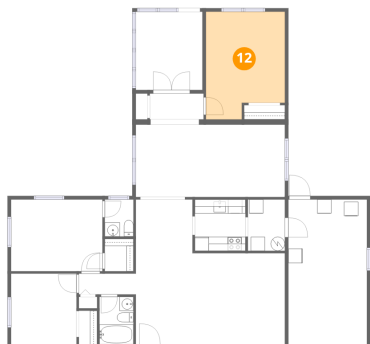
11 Floor 1 - Utility



Dimensions: 5'3" x 7'3"
Area: 38 sq. ft
Counted as living area: Yes

Heated: Yes
Finished: Yes
Enclosed: Yes
Contiguous: Yes
Permitted: Yes
Wet space: No
Addition: No
Conversion: No

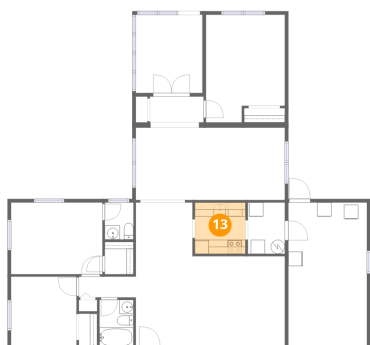
12 Floor 1 - Bedroom



Dimensions: 11'2" x 15'3"
Area: 156 sq. ft
Counted as living area: Yes

Heated: Yes
Finished: Yes
Enclosed: Yes
Contiguous: Yes
Permitted: Yes
Wet space: No
Addition: No
Conversion: No

13 Floor 1 - Kitchen



Dimensions: 7'2" x 7'3"
Area: 52 sq. ft
Counted as living area: Yes

Heated: Yes
Finished: Yes
Enclosed: Yes
Contiguous: Yes
Permitted: Yes
Wet space: No
Addition: No
Conversion: No

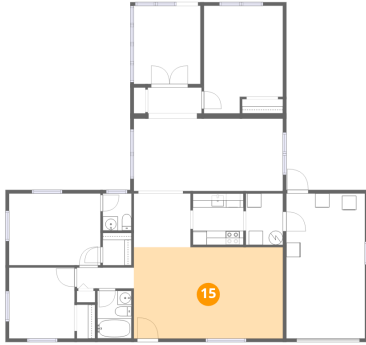
14 Floor 1 - Bath



Dimensions: 4'1" x 5'3"
Area: 21 sq. ft
Counted as living area: Yes

Heated: Yes
Finished: Yes
Enclosed: Yes
Contiguous: Yes
Permitted: Yes
Wet space: Yes
Addition: No
Conversion: No

15 Floor 1 - Living Room



Dimensions: 21'1" x 12'11"
Area: 273 sq. ft
Counted as living area: Yes

Heated: Yes
Finished: Yes
Enclosed: Yes
Contiguous: Yes
Permitted: Yes
Wet space: No
Addition: No
Conversion: No