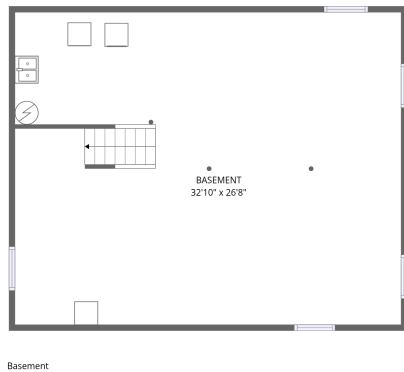
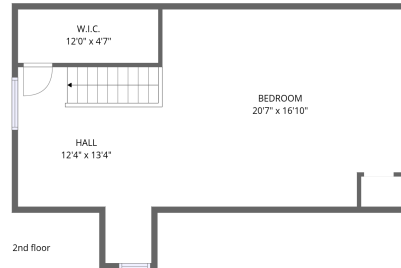


Home data report

8 Celia Dr, Rochester, NY, US



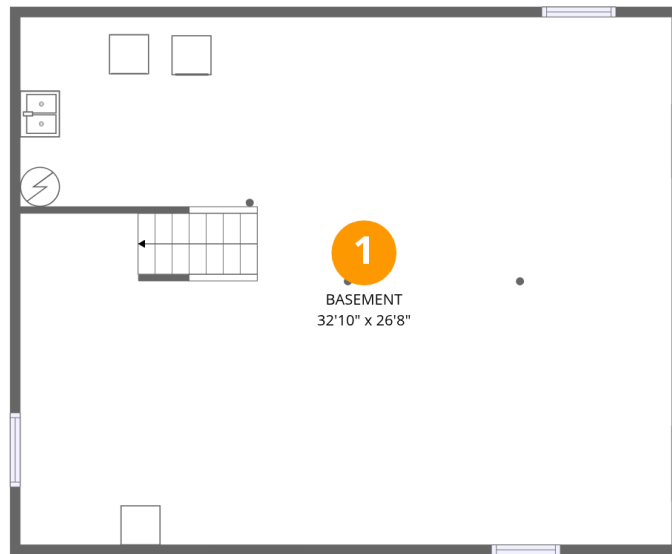
Total Area: 1490 sq. ft

Basement: 0 sq. ft, 1st Floor: 918 sq. ft, 2nd Floor: 572 sq. ft

Excluded: Basement 876 sq. ft, Fireplace 15 sq. ft, Walls: 178 sq. ft

Property summary





Room dimensions

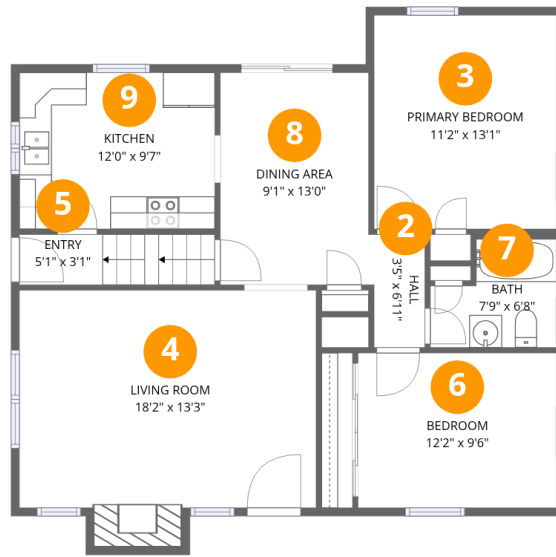
Floor 1 Below grade

Total:0sqft

Excluded: 876sqft

#		Dimensions	sqft	Counted as living area
1	Basement	32'10" x 26'8"	873 sq. ft	No

8 Celia Dr, Rochester, NY, US



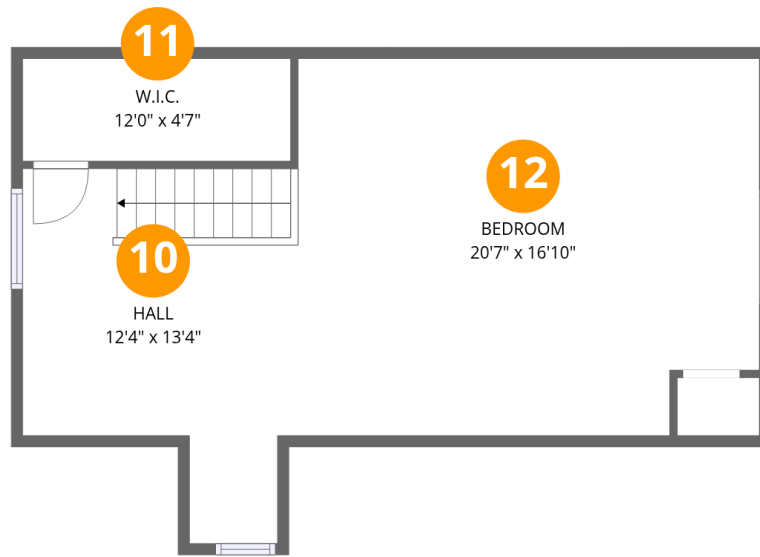
Room dimensions

Floor 2

Total:918sqft Excluded: 15sqft

#		Dimensions	sqft	Counted as living area
2	Hall	3'5" x 6'11"	23 sq. ft	Yes
3	Primary Bedroom	11'2" x 13'1"	146 sq. ft	Yes
4	Living Room	18'2" x 13'3"	255 sq. ft	Yes
5	Entry	5'1" x 3'1"	37 sq. ft	Yes
6	Bedroom	12'2" x 9'6"	115 sq. ft	Yes
7	Bath	7'9" x 6'8"	45 sq. ft	Yes
8	Dining Area	9'1" x 13'0"	118 sq. ft	Yes
9	Kitchen	12'0" x 9'7"	115 sq. ft	Yes

8 Celia Dr,Rochester,NY,US



Room dimensions

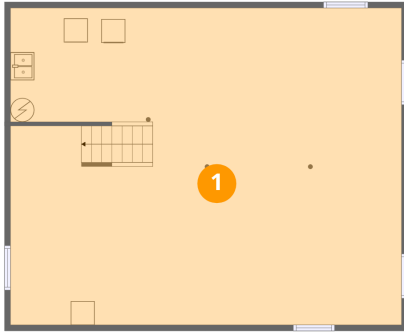
Floor 3

Total:572sqft

Excluded: 0sqft

#		Dimensions	sqft	Counted as living area
10	Hall	12'4" x 13'4"	165 sq. ft	Yes
11	W.I.C.	12'0" x 4'7"	55 sq. ft	Yes
12	Bedroom	20'7" x 16'10"	335 sq. ft	Yes

1 Floor 1 - Basement



Dimensions: 32'10" x 26'8"
Area: 873 sq. ft
Counted as living area: No

Heated: Yes
Finished: No
Enclosed: Yes
Contiguous: Yes
Permitted: Yes
Wet space: No
Addition: No
Conversion: No

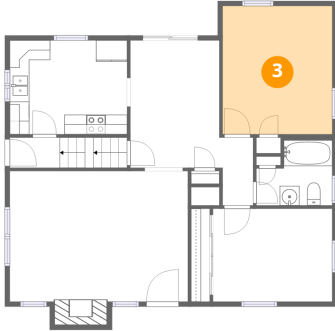
2 Floor 2 - Hall



Dimensions: 3'5" x 6'11"
Area: 23 sq. ft
Counted as living area: Yes

Heated: Yes
Finished: Yes
Enclosed: Yes
Contiguous: Yes
Permitted: Yes
Wet space: No
Addition: No
Conversion: No

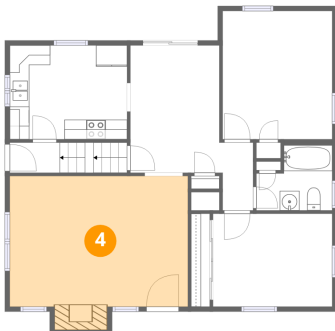
3 Floor 2 - Primary Bedroom



Dimensions: 11'2" x 13'1"
Area: 146 sq. ft
Counted as living area: Yes

Heated: Yes
Finished: Yes
Enclosed: Yes
Contiguous: Yes
Permitted: Yes
Wet space: No
Addition: No
Conversion: No

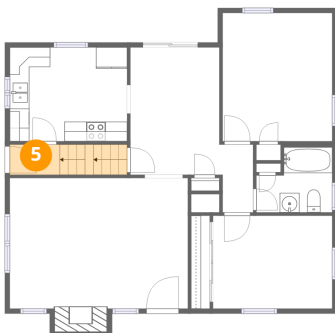
4 Floor 2 - Living Room



Dimensions: 18'2" x 13'3"
Area: 255 sq. ft
Counted as living area: Yes

Heated: Yes
Finished: Yes
Enclosed: Yes
Contiguous: Yes
Permitted: Yes
Wet space: No
Addition: No
Conversion: No

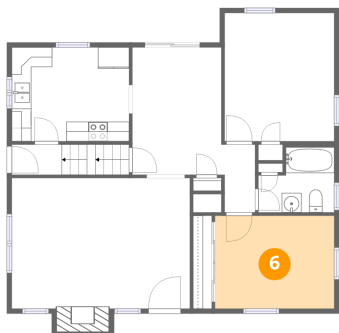
5 Floor 2 - Entry



Dimensions: 5'1" x 3'1"
Area: 37 sq. ft
Counted as living area: Yes

Heated: Yes
Finished: Yes
Enclosed: Yes
Contiguous: Yes
Permitted: Yes
Wet space: No
Addition: No
Conversion: No

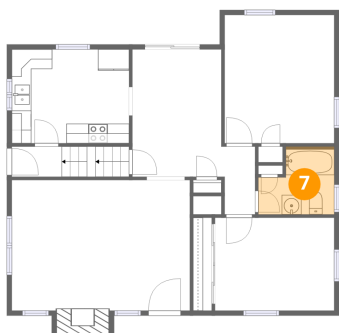
6 Floor 2 - Bedroom



Dimensions: 12'2" x 9'6"
Area: 115 sq. ft
Counted as living area: Yes

Heated: Yes
Finished: Yes
Enclosed: Yes
Contiguous: Yes
Permitted: Yes
Wet space: No
Addition: No
Conversion: No

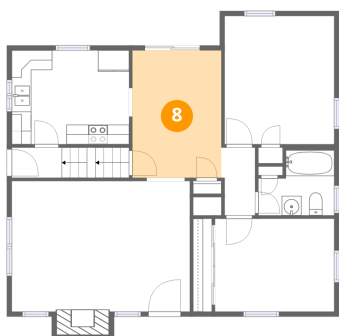
7 Floor 2 - Bath



Dimensions: 7'9" x 6'8"
Area: 45 sq. ft
Counted as living area: Yes

Heated: Yes
Finished: Yes
Enclosed: Yes
Contiguous: Yes
Permitted: Yes
Wet space: Yes
Addition: No
Conversion: No

8 Floor 2 - Dining Area



Dimensions: 9'1" x 13'0"
Area: 118 sq. ft
Counted as living area: Yes

Heated: Yes
Finished: Yes
Enclosed: Yes
Contiguous: Yes
Permitted: Yes
Wet space: No
Addition: No
Conversion: No

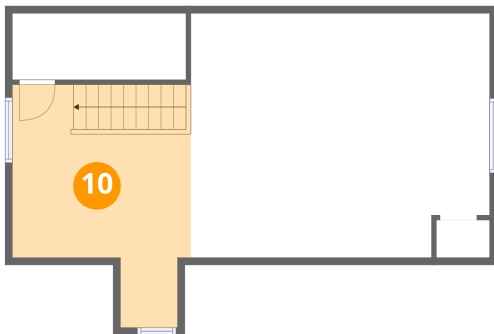
9 Floor 2 - Kitchen



Dimensions: 12'0" x 9'7"
Area: 115 sq. ft
Counted as living area: Yes

Heated: Yes
Finished: Yes
Enclosed: Yes
Contiguous: Yes
Permitted: Yes
Wet space: No
Addition: No
Conversion: No

10 Floor 3 - Hall



Dimensions: 12'4" x 13'4"
Area: 165 sq. ft
Counted as living area: Yes

Heated: Yes
Finished: Yes
Enclosed: Yes
Contiguous: Yes
Permitted: Yes
Wet space: No
Addition: No
Conversion: No

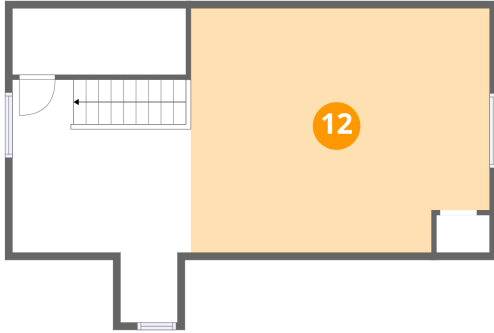
11 Floor 3 - W.I.C.



Dimensions: 12'0" x 4'7"
Area: 55 sq. ft
Counted as living area: Yes

Heated: Yes
Finished: Yes
Enclosed: Yes
Contiguous: Yes
Permitted: Yes
Wet space: No
Addition: No
Conversion: No

12 Floor 3 - Bedroom



Dimensions: 20'7" x 16'10"
Area: 335 sq. ft
Counted as living area: Yes

Heated: Yes
Finished: Yes
Enclosed: Yes
Contiguous: Yes
Permitted: Yes
Wet space: No
Addition: No
Conversion: No