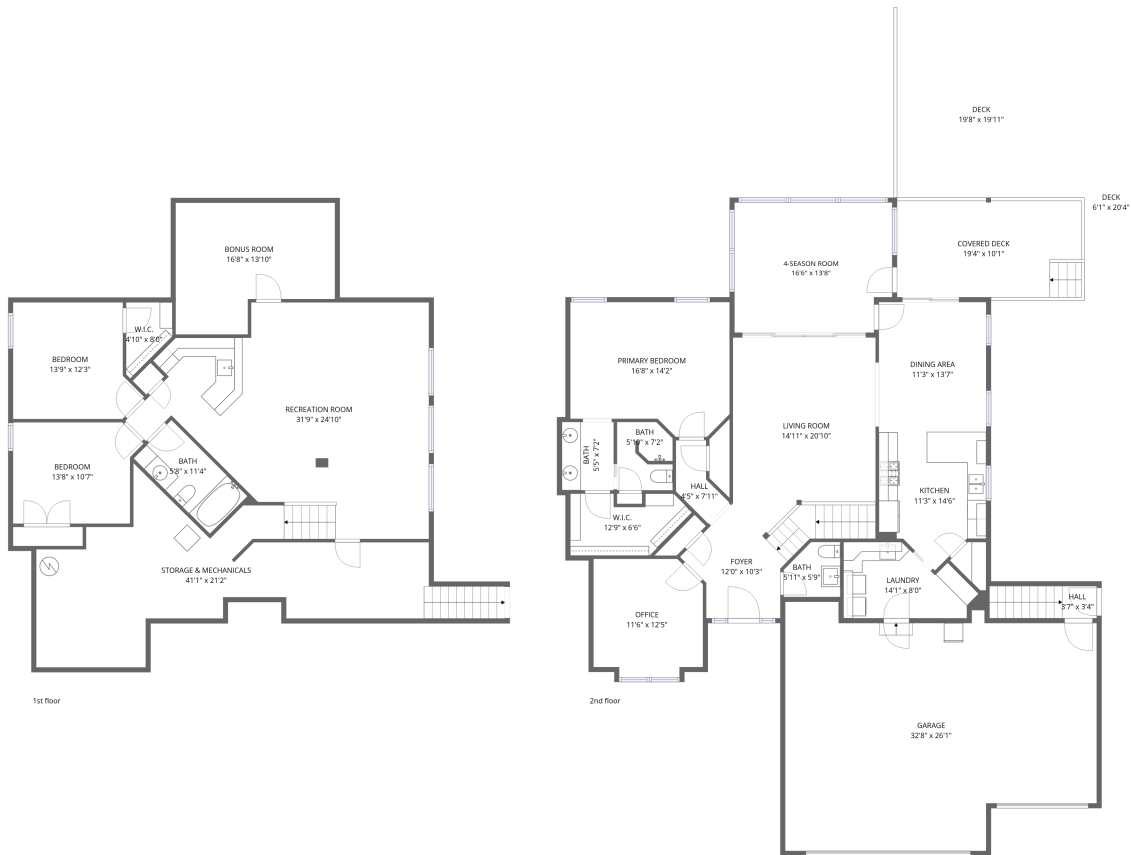


Home data report

22919 Co Rd 118, Goshen, IN, US




Total Area: 2672 sq. ft

1st Floor: 1207 sq. ft, 2nd Floor: 1465 sq. ft

Excluded: Storage & mechanicals 463 sq. ft, Deck 463 sq. ft, Covered deck 194 sq. ft, Garage 736 sq. ft, 4-season room 218 sq. ft, Walls: 263 sq. ft

Property summary

 **2** Floors

 **3** Bedrooms

 **2** Bathrooms

Home data report

22919 Co Rd 118,Goshen,IN,US

 **1**
Half baths

 **1**
Garages



Room dimensions

Floor 1

Total:1207sqft

Excluded: 463sqft

#		Dimensions	sqft	Counted as living area
1	Bath	5'8" x 11'4"	64 sq. ft	Yes
2	Bedroom	13'8" x 10'7"	132 sq. ft	Yes
3	Storage & Mechanicals	41'1" x 21'2"	461 sq. ft	No
4	W.I.C.	4'10" x 8'0"	29 sq. ft	Yes
5	Bedroom	13'9" x 12'3"	146 sq. ft	Yes
6	Recreation Room	31'9" x 24'10"	571 sq. ft	Yes
7	Bonus Room	16'8" x 13'10"	197 sq. ft	Yes



Room dimensions

Floor 2

Total: 1465sqft

Excluded: 1611sqft

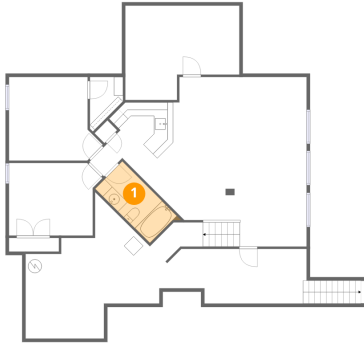
#		Dimensions	sqft	Counted as living area
8	Bath	5'10" x 7'2"	39 sq. ft	Yes
9	Garage	32'8" x 26'1"	736 sq. ft	No
10	Bath	5'11" x 5'9"	30 sq. ft	Yes
11	Dining Area	11'3" x 13'7"	153 sq. ft	Yes
12	Foyer	12'0" x 10'3"	84 sq. ft	Yes
13	Covered Deck	19'4" x 10'1"	194 sq. ft	No
14	Primary Bedroom	16'8" x 14'2"	214 sq. ft	Yes
15	Office	11'6" x 12'5"	133 sq. ft	Yes
16	Bath	5'5" x 7'2"	39 sq. ft	Yes
17	Kitchen	11'3" x 14'6"	137 sq. ft	Yes
18	W.I.C.	12'9" x 6'6"	66 sq. ft	Yes

Home data report

22919 Co Rd 118,Goshen,IN,US

#		Dimensions	sqft	Counted as living area
19	Living Room	14'11" x 20'10"	315 sq. ft	Yes
20	4-season Room	16'6" x 13'8"	218 sq. ft	No
21	Hall	4'5" x 7'11"	28 sq. ft	Yes
22	Hall	3'7" x 3'4"	38 sq. ft	Yes
23	Laundry	14'1" x 8'0"	90 sq. ft	Yes
24	Deck	6'1" x 20'4"	124 sq. ft	No
25	Deck	19'8" x 19'11"	339 sq. ft	No

1 Floor 1 - Bath



Dimensions: 5'8" x 11'4"
Area: 64 sq. ft
Counted as living area: Yes

Heated: Yes
Finished: Yes
Enclosed: Yes
Contiguous: Yes
Permitted: Yes
Wet space: Yes
Addition: No
Conversion: No

2 Floor 1 - Bedroom



Dimensions: 13'8" x 10'7"
Area: 132 sq. ft
Counted as living area: Yes

Heated: Yes
Finished: Yes
Enclosed: Yes
Contiguous: Yes
Permitted: Yes
Wet space: No
Addition: No
Conversion: No

3 Floor 1 - Storage & Mechanicals



Dimensions: 41'1" x 21'2"
Area: 461 sq. ft
Counted as living area: No

Heated: No
Finished: No
Enclosed: No
Contiguous: Yes
Permitted: Yes
Wet space: No
Addition: No
Conversion: No

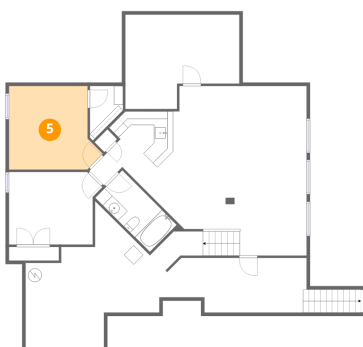
4 Floor 1 - W.I.C.



Dimensions: 4'10" x 8'0"
Area: 29 sq. ft
Counted as living area: Yes

Heated: Yes
Finished: Yes
Enclosed: Yes
Contiguous: Yes
Permitted: Yes
Wet space: No
Addition: No
Conversion: No

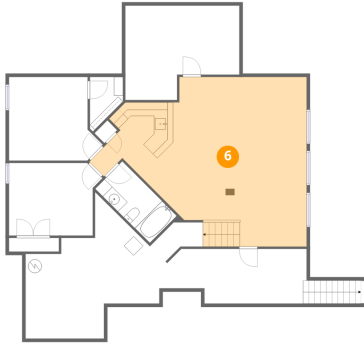
5 Floor 1 - Bedroom



Dimensions: 13'9" x 12'3"
Area: 146 sq. ft
Counted as living area: Yes

Heated: Yes
Finished: Yes
Enclosed: Yes
Contiguous: Yes
Permitted: Yes
Wet space: No
Addition: No
Conversion: No

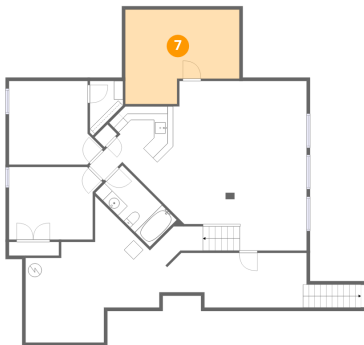
6 Floor 1 - Recreation Room



Dimensions: 31'9" x 24'10"
Area: 571 sq. ft
Counted as living area: Yes

Heated: Yes
Finished: Yes
Enclosed: Yes
Contiguous: Yes
Permitted: Yes
Wet space: No
Addition: No
Conversion: No

7 Floor 1 - Bonus Room



Dimensions: 16'8" x 13'10"
Area: 197 sq. ft
Counted as living area: Yes

Heated: Yes
Finished: Yes
Enclosed: Yes
Contiguous: Yes
Permitted: Yes
Wet space: No
Addition: No
Conversion: No

8 Floor 2 - Bath



Dimensions: 5'10" x 7'2"
Area: 39 sq. ft
Counted as living area: Yes

Heated: Yes
Finished: Yes
Enclosed: Yes
Contiguous: Yes
Permitted: Yes
Wet space: Yes
Addition: No
Conversion: No

9 Floor 2 - Garage



Dimensions: 32'8" x 26'1"
Area: 736 sq. ft
Counted as living area: No

Heated: No
Finished: No
Enclosed: Yes
Contiguous: Yes
Permitted: Yes
Wet space: No
Addition: No
Conversion: No

10 Floor 2 - Bath



Dimensions: 5'11" x 5'9"
Area: 30 sq. ft
Counted as living area: Yes

Heated: Yes
Finished: Yes
Enclosed: Yes
Contiguous: Yes
Permitted: Yes
Wet space: Yes
Addition: No
Conversion: No

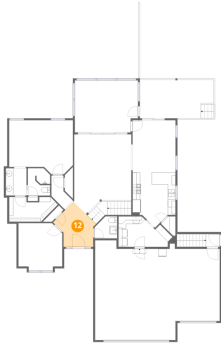
11 Floor 2 - Dining Area



Dimensions: 11'3" x 13'7"
Area: 153 sq. ft
Counted as living area: Yes

Heated: Yes
Finished: Yes
Enclosed: Yes
Contiguous: Yes
Permitted: Yes
Wet space: No
Addition: No
Conversion: No

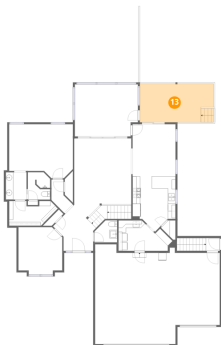
12 Floor 2 - Foyer



Dimensions: 12'0" x 10'3"
Area: 84 sq. ft
Counted as living area: Yes

Heated: Yes
Finished: Yes
Enclosed: Yes
Contiguous: Yes
Permitted: Yes
Wet space: No
Addition: No
Conversion: No

13 Floor 2 - Covered Deck



Dimensions: 19'4" x 10'1"
Area: 194 sq. ft
Counted as living area: No

Heated: No
Finished: No
Enclosed: No
Contiguous: No
Permitted: Yes
Wet space: No
Addition: No
Conversion: No

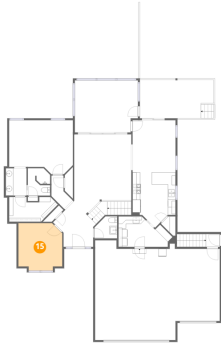
14 Floor 2 - Primary Bedroom



Dimensions: 16'8" x 14'2"
Area: 214 sq. ft
Counted as living area: Yes

Heated: Yes
Finished: Yes
Enclosed: Yes
Contiguous: Yes
Permitted: Yes
Wet space: No
Addition: No
Conversion: No

15 Floor 2 - Office



Dimensions: 11'6" x 12'5"
Area: 133 sq. ft
Counted as living area: Yes

Heated: Yes
Finished: Yes
Enclosed: Yes
Contiguous: Yes
Permitted: Yes
Wet space: No
Addition: No
Conversion: No

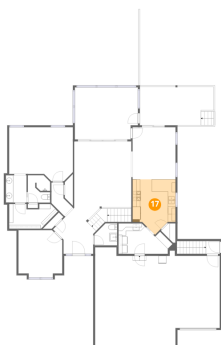
16 Floor 2 - Bath



Dimensions: 5'5" x 7'2"
Area: 39 sq. ft
Counted as living area: Yes

Heated: Yes
Finished: Yes
Enclosed: Yes
Contiguous: Yes
Permitted: Yes
Wet space: Yes
Addition: No
Conversion: No

17 Floor 2 - Kitchen



Dimensions: 11'3" x 14'6"
Area: 137 sq. ft
Counted as living area: Yes

Heated: Yes
Finished: Yes
Enclosed: Yes
Contiguous: Yes
Permitted: Yes
Wet space: No
Addition: No
Conversion: No

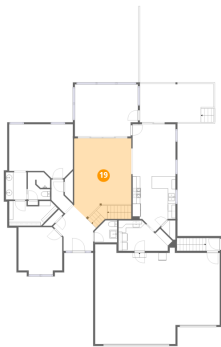
18 Floor 2 - W.I.C.



Dimensions: 12'9" x 6'6"
Area: 66 sq. ft
Counted as living area: Yes

Heated: Yes
Finished: Yes
Enclosed: Yes
Contiguous: Yes
Permitted: Yes
Wet space: No
Addition: No
Conversion: No

19 Floor 2 - Living Room



Dimensions: 14'11" x 20'10"
Area: 315 sq. ft
Counted as living area: Yes

Heated: Yes
Finished: Yes
Enclosed: Yes
Contiguous: Yes
Permitted: Yes
Wet space: No
Addition: No
Conversion: No

20 Floor 2 - 4-season Room



Dimensions: 16'6" x 13'8"
Area: 218 sq. ft
Counted as living area: No

Heated: No
Finished: No
Enclosed: No
Contiguous: Yes
Permitted: Yes
Wet space: No
Addition: No
Conversion: No

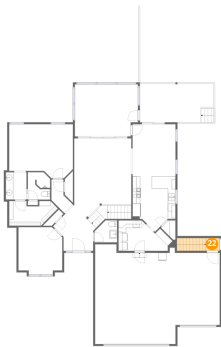
21 Floor 2 - Hall



Dimensions: 4'5" x 7'11"
Area: 28 sq. ft
Counted as living area: Yes

Heated: Yes
Finished: Yes
Enclosed: Yes
Contiguous: Yes
Permitted: Yes
Wet space: No
Addition: No
Conversion: No

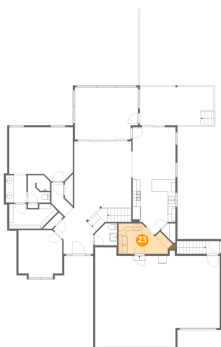
22 Floor 2 - Hall



Dimensions: 3'7" x 3'4"
Area: 38 sq. ft
Counted as living area: No

Heated: Yes
Finished: Yes
Enclosed: Yes
Contiguous: No
Permitted: Yes
Wet space: No
Addition: No
Conversion: No

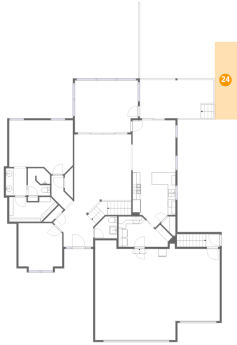
23 Floor 2 - Laundry



Dimensions: 14'1" x 8'0"
Area: 90 sq. ft
Counted as living area: Yes

Heated: Yes
Finished: Yes
Enclosed: Yes
Contiguous: Yes
Permitted: Yes
Wet space: No
Addition: No
Conversion: No

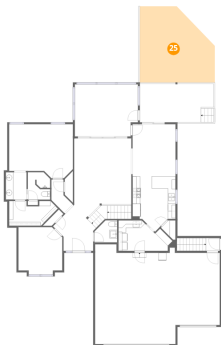
24 Floor 2 - Deck



Dimensions: 6'1" x 20'4"
Area: 124 sq. ft
Counted as living area: No

Heated: No
Finished: No
Enclosed: No
Contiguous: Yes
Permitted: Yes
Wet space: No
Addition: No
Conversion: No

25 Floor 2 - Deck



Dimensions: 19'8" x 19'11"
Area: 339 sq. ft
Counted as living area: No

Heated: No
Finished: No
Enclosed: No
Contiguous: Yes
Permitted: Yes
Wet space: No
Addition: No
Conversion: No