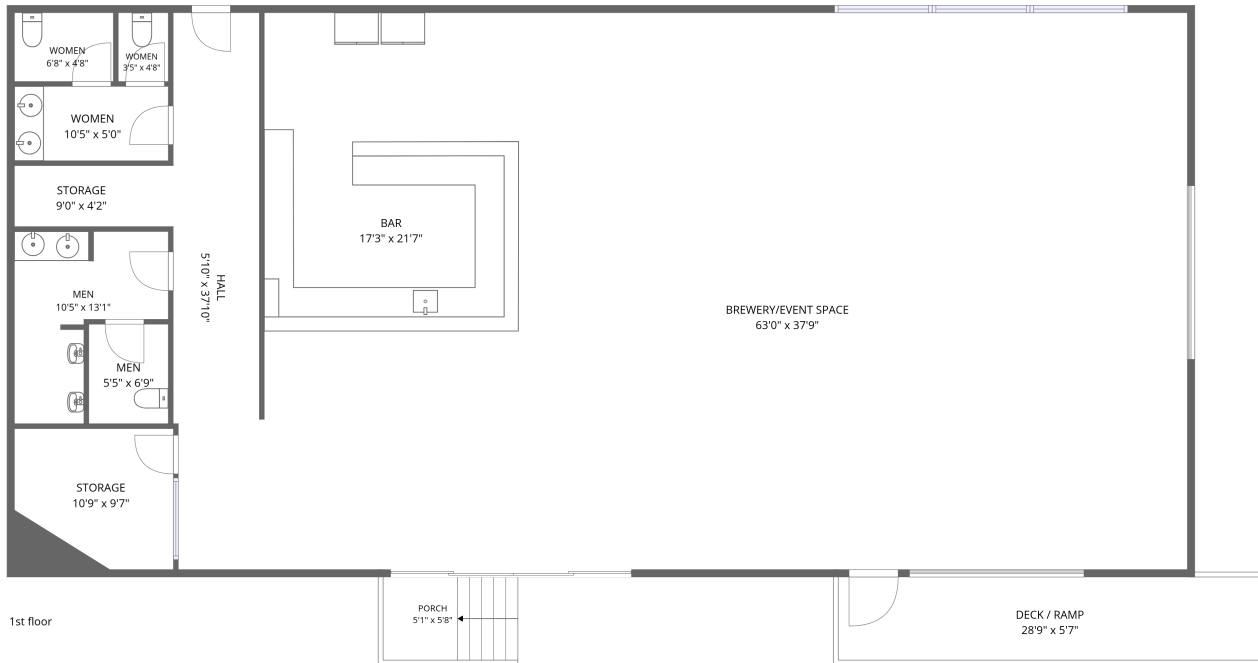


Home data report

17775 Leslie Street, Unit 9, Newmarket, ON, Canada, Unit 9




Total Area: 2862 sq. ft

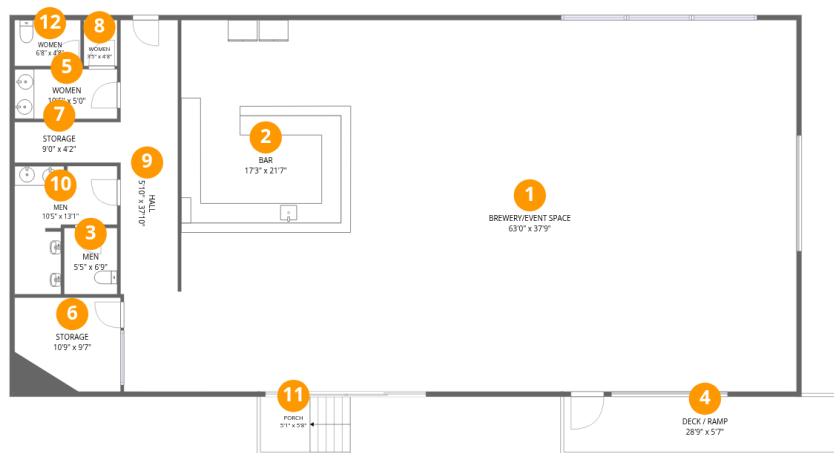
1st Floor: 2862 sq. ft

Excluded: Deck / ramp 162 sq. ft, Porch 52 sq. ft, Storage 148 sq. ft, Walls: 119 sq. ft

Property summary

 **1** Floors

 **2** Half baths



Room dimensions

Floor 1

Total:2862sqft

Excluded: 362sqft

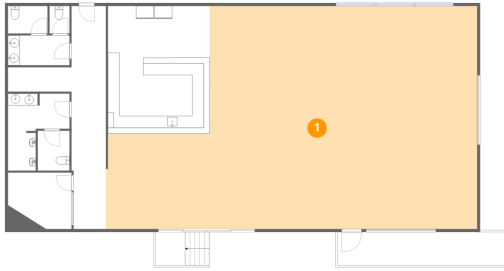
#		Dimensions	sqft	Counted as living area
1	BREWERY/EVENT Space	63'0" x 37'9"	2000 sq. ft	Yes
2	Bar	17'3" x 21'7"	373 sq. ft	Yes
3	Men	5'5" x 6'9"	36 sq. ft	Yes
4	Deck / Ramp	28'9" x 5'7"	162 sq. ft	No
5	Women	10'5" x 5'0"	53 sq. ft	Yes
6	Storage	10'9" x 9'7"	103 sq. ft	No
7	Storage	9'0" x 4'2"	45 sq. ft	No
8	Women	3'5" x 4'8"	16 sq. ft	Yes
9	Hall	5'10" x 37'10"	217 sq. ft	Yes
10	Men	10'5" x 13'1"	94 sq. ft	Yes

Home data report

17775 Leslie Street,Unit 9,Newmarket,ON,Canada, Unit 9

#		Dimensions	sqft	Counted as living area
11	Porch	5'1" x 5'8"	52 sq. ft	No
12	Women	6'8" x 4'8"	31 sq. ft	Yes

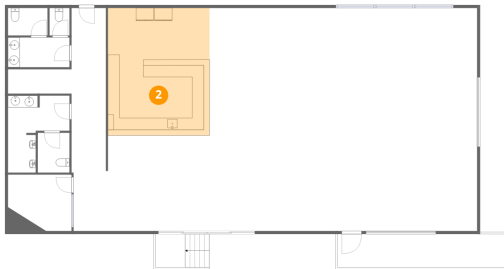
1 Floor 1 - BREWERY/EVENT Space



Dimensions: 63'0" x 37'9"
Area: 2000 sq. ft
Counted as living area: Yes

Heated: Yes
Finished: Yes
Enclosed: Yes
Contiguous: Yes
Permitted: Yes
Wet space: No
Addition: No
Conversion: No

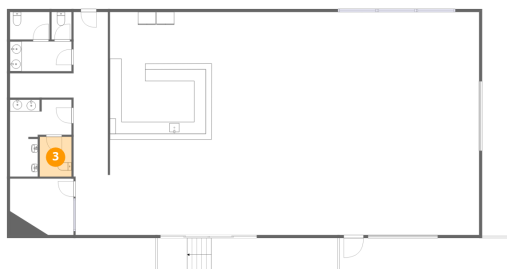
2 Floor 1 - Bar



Dimensions: 17'3" x 21'7"
Area: 373 sq. ft
Counted as living area: Yes

Heated: Yes
Finished: Yes
Enclosed: Yes
Contiguous: Yes
Permitted: Yes
Wet space: No
Addition: No
Conversion: No

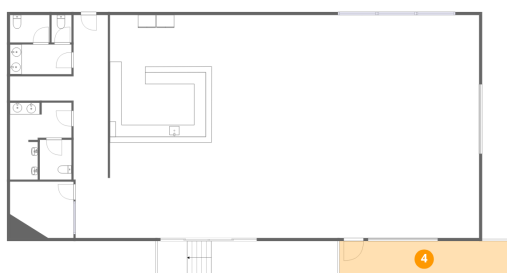
3 Floor 1 - Men



Dimensions: 5'5" x 6'9"
Area: 36 sq. ft
Counted as living area: Yes

Heated: Yes
Finished: Yes
Enclosed: Yes
Contiguous: Yes
Permitted: Yes
Wet space: Yes
Addition: No
Conversion: No

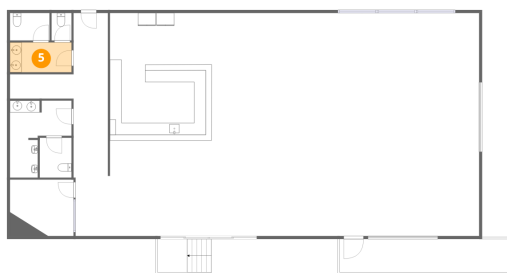
4 Floor 1 - Deck / Ramp



Dimensions: 28'9" x 5'7"
Area: 162 sq. ft
Counted as living area: No

Heated: No
Finished: No
Enclosed: No
Contiguous: Yes
Permitted: Yes
Wet space: No
Addition: No
Conversion: No

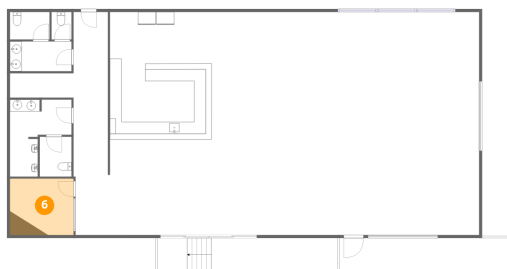
5 Floor 1 - Women



Dimensions: 10'5" x 5'0"
Area: 53 sq. ft
Counted as living area: Yes

Heated: Yes
Finished: Yes
Enclosed: Yes
Contiguous: Yes
Permitted: Yes
Wet space: Yes
Addition: No
Conversion: No

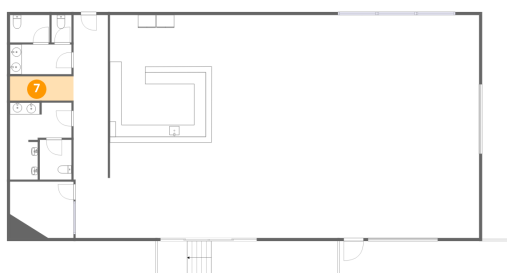
6 Floor 1 - Storage



Dimensions: 10'9" x 9'7"
Area: 103 sq. ft
Counted as living area: No

Heated: No
Finished: No
Enclosed: No
Contiguous: No
Permitted: Yes
Wet space: No
Addition: No
Conversion: No

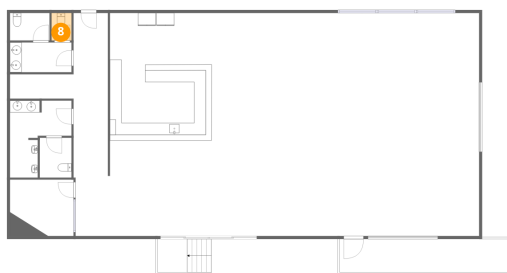
7 Floor 1 - Storage



Dimensions: 9'0" x 4'2"
Area: 45 sq. ft
Counted as living area: No

Heated: No
Finished: Yes
Enclosed: No
Contiguous: Yes
Permitted: Yes
Wet space: No
Addition: No
Conversion: No

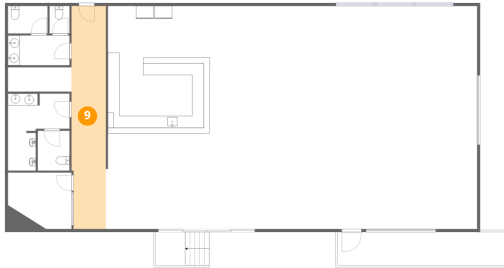
8 Floor 1 - Women



Dimensions: 3'5" x 4'8"
Area: 16 sq. ft
Counted as living area: Yes

Heated: Yes
Finished: Yes
Enclosed: Yes
Contiguous: Yes
Permitted: Yes
Wet space: Yes
Addition: No
Conversion: No

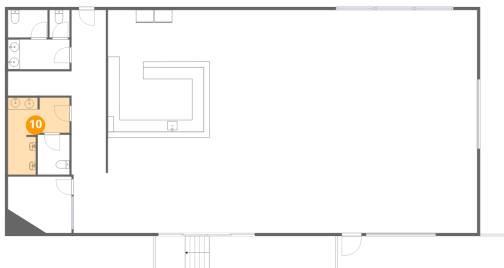
9 Floor 1 - Hall



Dimensions: 5'10" x 37'10"
Area: 217 sq. ft
Counted as living area: Yes

Heated: Yes
Finished: Yes
Enclosed: Yes
Contiguous: Yes
Permitted: Yes
Wet space: No
Addition: No
Conversion: No

10 Floor 1 - Men



Dimensions: 10'5" x 13'1"
Area: 94 sq. ft
Counted as living area: Yes

Heated: Yes
Finished: Yes
Enclosed: Yes
Contiguous: Yes
Permitted: Yes
Wet space: Yes
Addition: No
Conversion: No

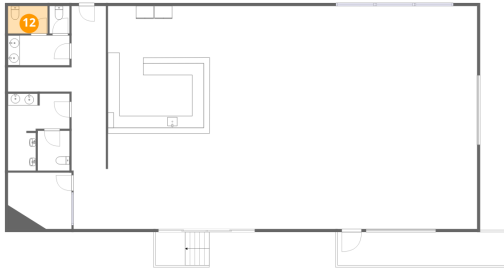
11 Floor 1 - Porch



Dimensions: 5'1" x 5'8"
Area: 52 sq. ft
Counted as living area: No

Heated: No
Finished: No
Enclosed: No
Contiguous: Yes
Permitted: Yes
Wet space: No
Addition: No
Conversion: No

12 Floor 1 - Women



Dimensions: 6'8" x 4'8"
Area: 31 sq. ft
Counted as living area: Yes

Heated: Yes
Finished: Yes
Enclosed: Yes
Contiguous: Yes
Permitted: Yes
Wet space: Yes
Addition: No
Conversion: No