

Home data report

1030 Courtfield Cove, Collierville, TN, US



Total Area: 3793 sq. ft

1st Floor: 2302 sq. ft, 2nd Floor: 1491 sq. ft

Excluded: Fireplace 14 sq. ft, Open to below 123 sq. ft, Walls: 235 sq. ft

Property summary

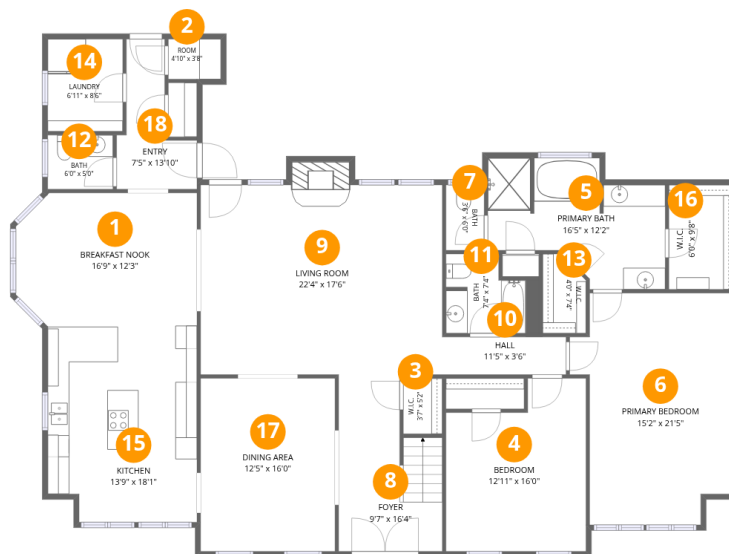
 **2** Floors

 **6** Bedrooms

 **4** Bathrooms

 **1** Half baths

1030 Courtfield Cove, Collierville, TN, US



Room dimensions

Floor 1

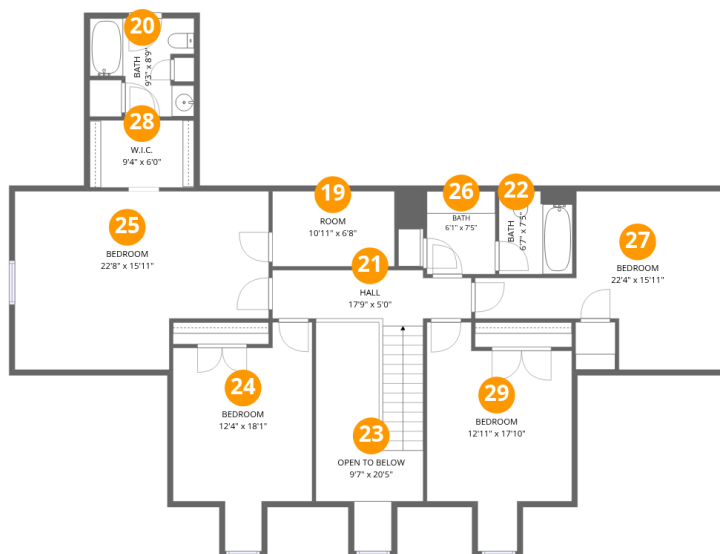
Total:2302sqft Excluded: 14sqft

#		Dimensions	sqft	Counted as living area
1	Breakfast Nook	16'9" x 12'3"	196 sq. ft	Yes
2	Room	4'10" x 3'8"	18 sq. ft	Yes
3	W.I.C.	3'7" x 5'2"	18 sq. ft	Yes
4	Bedroom	12'11" x 16'0"	182 sq. ft	Yes
5	Primary Bath	16'5" x 12'2"	151 sq. ft	Yes
6	Primary Bedroom	15'2" x 21'5"	283 sq. ft	Yes
7	Bath	3'6" x 6'0"	21 sq. ft	Yes
8	Foyer	9'7" x 16'4"	132 sq. ft	Yes
9	Living Room	22'4" x 17'6"	402 sq. ft	Yes
10	Hall	11'5" x 3'6"	40 sq. ft	Yes
11	Bath	7'4" x 7'4"	53 sq. ft	Yes

Home data report

1030 Courtfield Cove, Collierville, TN, US

#		Dimensions	sqft	Counted as living area
12	Bath	6'0" x 5'0"	30 sq. ft	Yes
13	W.I.C.	4'0" x 7'4"	26 sq. ft	Yes
14	Laundry	6'11" x 8'6"	59 sq. ft	Yes
15	Kitchen	13'9" x 18'1"	242 sq. ft	Yes
16	W.I.C.	6'0" x 9'8"	58 sq. ft	Yes
17	Dining Area	12'5" x 16'0"	198 sq. ft	Yes
18	Entry	7'5" x 13'10"	67 sq. ft	Yes



Room dimensions

Floor 2

Total: 1491 sqft

Excluded: 123 sqft

#		Dimensions	sqft	Counted as living area
19	Room	10'11" x 6'8"	73 sq. ft	Yes
20	Bath	9'3" x 8'9"	64 sq. ft	Yes
21	Hall	17'9" x 5'0"	122 sq. ft	Yes
22	Bath	6'7" x 7'5"	48 sq. ft	Yes
23	Open To Below	9'7" x 20'5"	123 sq. ft	No
24	Bedroom	12'4" x 18'1"	192 sq. ft	Yes
25	Bedroom	22'8" x 15'11"	320 sq. ft	Yes
26	Bath	6'1" x 7'5"	45 sq. ft	Yes
27	Bedroom	22'4" x 15'11"	227 sq. ft	Yes
28	W.I.C.	9'4" x 6'0"	56 sq. ft	Yes
29	Bedroom	12'11" x 17'10"	199 sq. ft	Yes

1 Floor 1 - Breakfast Nook



Dimensions: 16'9" x 12'3"
Area: 196 sq. ft
Counted as living area: Yes

Heated: Yes
Finished: Yes
Enclosed: Yes
Contiguous: Yes
Permitted: Yes
Wet space: No
Addition: No
Conversion: No

2 Floor 1 - Room



Dimensions: 4'10" x 3'8"
Area: 18 sq. ft
Counted as living area: Yes

Heated: Yes
Finished: Yes
Enclosed: Yes
Contiguous: Yes
Permitted: Yes
Wet space: No
Addition: No
Conversion: No

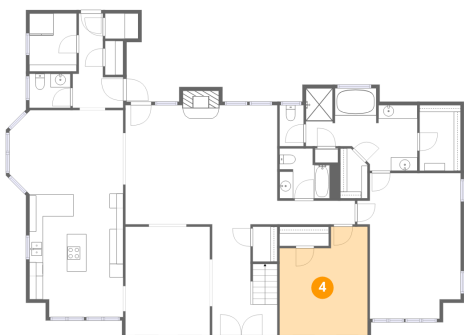
3 Floor 1 - W.I.C.



Dimensions: 3'7" x 5'2"
Area: 18 sq. ft
Counted as living area: Yes

Heated: Yes
Finished: Yes
Enclosed: Yes
Contiguous: Yes
Permitted: Yes
Wet space: No
Addition: No
Conversion: No

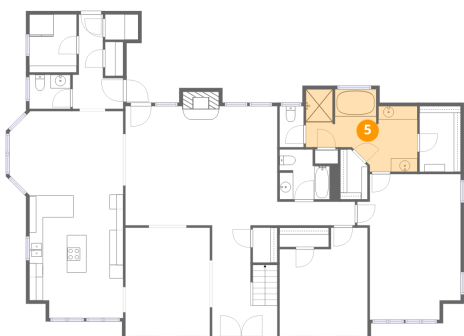
4 Floor 1 - Bedroom



Dimensions: 12'11" x 16'0"
Area: 182 sq. ft
Counted as living area: Yes

Heated: Yes
Finished: Yes
Enclosed: Yes
Contiguous: Yes
Permitted: Yes
Wet space: No
Addition: No
Conversion: No

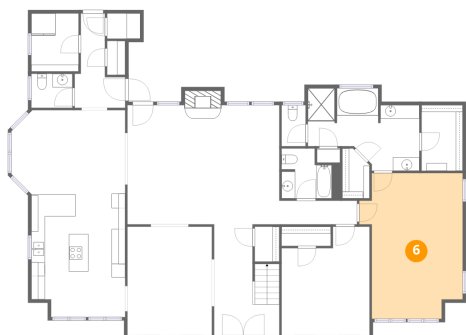
5 Floor 1 - Primary Bath



Dimensions: 16'5" x 12'2"
Area: 151 sq. ft
Counted as living area: Yes

Heated: Yes
Finished: Yes
Enclosed: Yes
Contiguous: Yes
Permitted: Yes
Wet space: Yes
Addition: No
Conversion: No

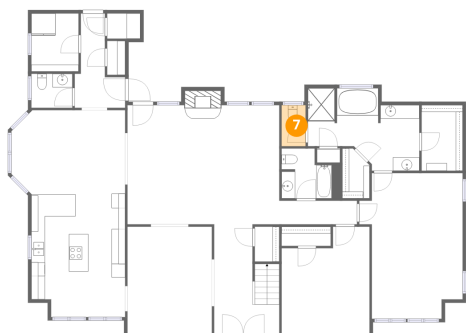
6 Floor 1 - Primary Bedroom



Dimensions: 15'2" x 21'5"
Area: 283 sq. ft
Counted as living area: Yes

Heated: Yes
Finished: Yes
Enclosed: Yes
Contiguous: Yes
Permitted: Yes
Wet space: No
Addition: No
Conversion: No

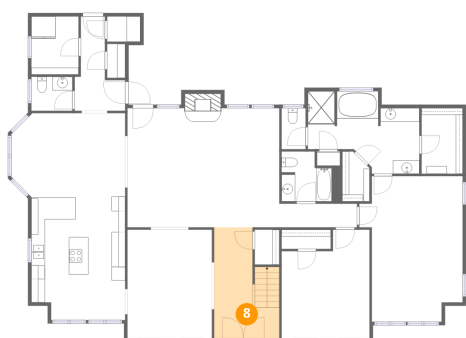
7 Floor 1 - Bath



Dimensions: 3'6" x 6'0"
Area: 21 sq. ft
Counted as living area: Yes

Heated: Yes
Finished: Yes
Enclosed: Yes
Contiguous: Yes
Permitted: Yes
Wet space: Yes
Addition: No
Conversion: No

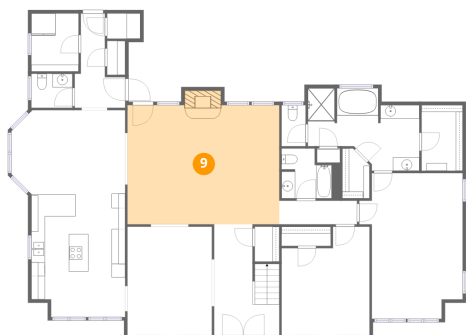
8 Floor 1 - Foyer



Dimensions: 9'7" x 16'4"
Area: 132 sq. ft
Counted as living area: Yes

Heated: Yes
Finished: Yes
Enclosed: Yes
Contiguous: Yes
Permitted: Yes
Wet space: No
Addition: No
Conversion: No

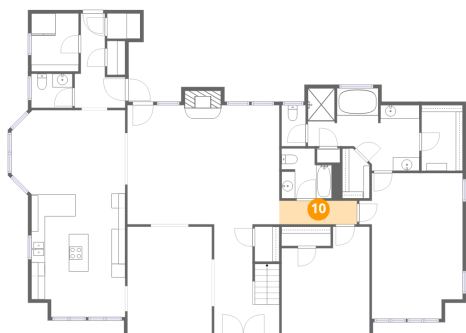
9 Floor 1 - Living Room



Dimensions: 22'4" x 17'6"
Area: 402 sq. ft
Counted as living area: Yes

Heated: Yes
Finished: Yes
Enclosed: Yes
Contiguous: Yes
Permitted: Yes
Wet space: No
Addition: No
Conversion: No

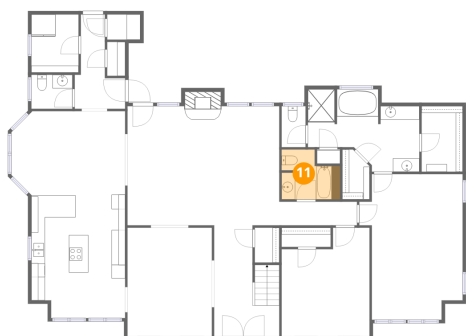
10 Floor 1 - Hall



Dimensions: 11'5" x 3'6"
Area: 40 sq. ft
Counted as living area: Yes

Heated: Yes
Finished: Yes
Enclosed: Yes
Contiguous: Yes
Permitted: Yes
Wet space: No
Addition: No
Conversion: No

11 Floor 1 - Bath



Dimensions: 7'4" x 7'4"
Area: 53 sq. ft
Counted as living area: Yes

Heated: Yes
Finished: Yes
Enclosed: Yes
Contiguous: Yes
Permitted: Yes
Wet space: Yes
Addition: No
Conversion: No

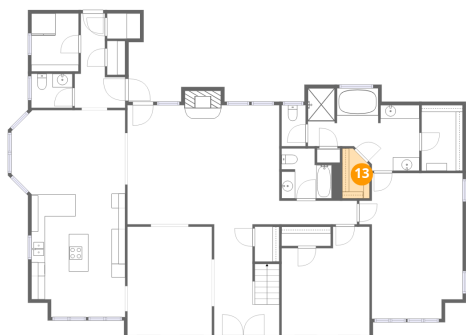
12 Floor 1 - Bath



Dimensions: 6'0" x 5'0"
Area: 30 sq. ft
Counted as living area: Yes

Heated: Yes
Finished: Yes
Enclosed: Yes
Contiguous: Yes
Permitted: Yes
Wet space: Yes
Addition: No
Conversion: No

13 Floor 1 - W.I.C.



Dimensions: 4'0" x 7'4"
Area: 26 sq. ft
Counted as living area: Yes

Heated: Yes
Finished: Yes
Enclosed: Yes
Contiguous: Yes
Permitted: Yes
Wet space: No
Addition: No
Conversion: No

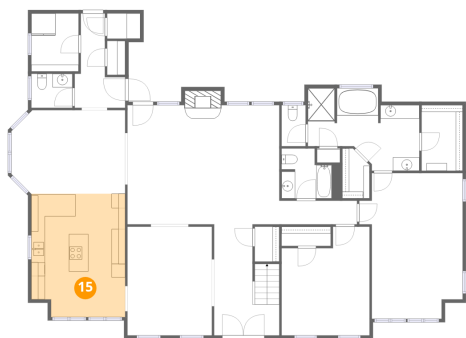
14 Floor 1 - Laundry



Dimensions: 6'11" x 8'6"
Area: 59 sq. ft
Counted as living area: Yes

Heated: Yes
Finished: Yes
Enclosed: Yes
Contiguous: Yes
Permitted: Yes
Wet space: No
Addition: No
Conversion: No

15 Floor 1 - Kitchen



Dimensions: 13'9" x 18'1"
Area: 242 sq. ft
Counted as living area: Yes

Heated: Yes
Finished: Yes
Enclosed: Yes
Contiguous: Yes
Permitted: Yes
Wet space: No
Addition: No
Conversion: No

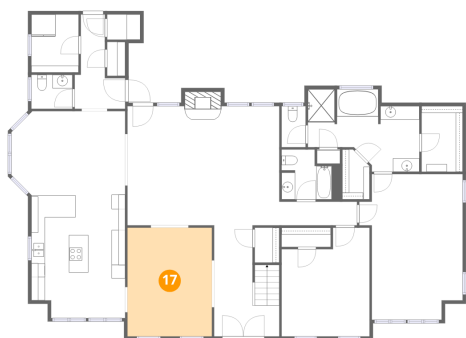
16 Floor 1 - W.I.C.



Dimensions: 6'0" x 9'8"
Area: 58 sq. ft
Counted as living area: Yes

Heated: Yes
Finished: Yes
Enclosed: Yes
Contiguous: Yes
Permitted: Yes
Wet space: No
Addition: No
Conversion: No

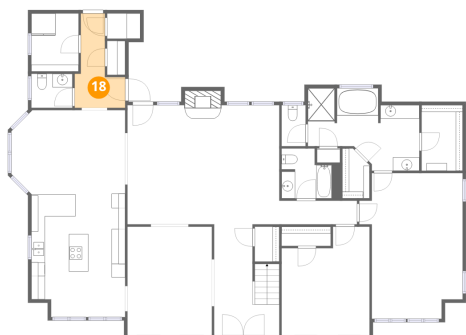
17 Floor 1 - Dining Area



Dimensions: 12'5" x 16'0"
Area: 198 sq. ft
Counted as living area: Yes

Heated: Yes
Finished: Yes
Enclosed: Yes
Contiguous: Yes
Permitted: Yes
Wet space: No
Addition: No
Conversion: No

18 Floor 1 - Entry



Dimensions: 7'5" x 13'10"
Area: 67 sq. ft
Counted as living area: Yes

Heated: Yes
Finished: Yes
Enclosed: Yes
Contiguous: Yes
Permitted: Yes
Wet space: No
Addition: No
Conversion: No

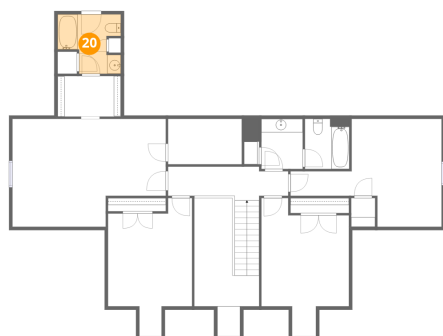
19 Floor 2 - Room



Dimensions: 10'11" x 6'8"
Area: 73 sq. ft
Counted as living area: Yes

Heated: Yes
Finished: Yes
Enclosed: Yes
Contiguous: Yes
Permitted: Yes
Wet space: No
Addition: No
Conversion: No

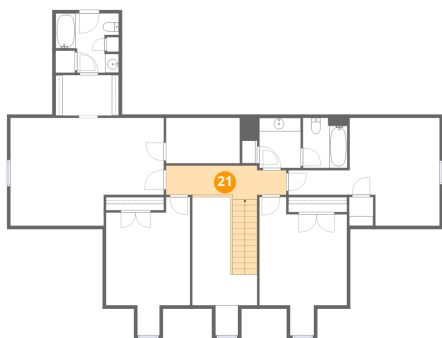
20 Floor 2 - Bath



Dimensions: 9'3" x 8'9"
Area: 64 sq. ft
Counted as living area: Yes

Heated: Yes
Finished: Yes
Enclosed: Yes
Contiguous: Yes
Permitted: Yes
Wet space: Yes
Addition: No
Conversion: No

21 Floor 2 - Hall



Dimensions: 17'9" x 5'0"
Area: 122 sq. ft
Counted as living area: Yes

Heated: Yes
Finished: Yes
Enclosed: Yes
Contiguous: Yes
Permitted: Yes
Wet space: No
Addition: No
Conversion: No

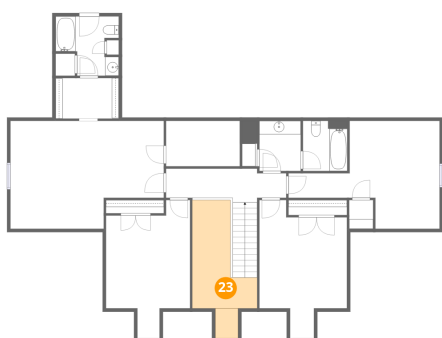
22 Floor 2 - Bath



Dimensions: 6'7" x 7'5"
Area: 48 sq. ft
Counted as living area: Yes

Heated: Yes
Finished: Yes
Enclosed: Yes
Contiguous: Yes
Permitted: Yes
Wet space: Yes
Addition: No
Conversion: No

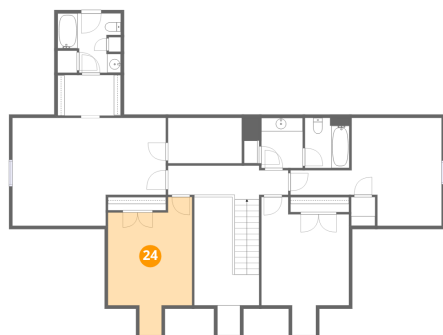
23 Floor 2 - Open To Below



Dimensions: 9'7" x 20'5"
Area: 123 sq. ft
Counted as living area: No

Heated: No
Finished: No
Enclosed: No
Contiguous: Yes
Permitted: No
Wet space: No
Addition: No
Conversion: No

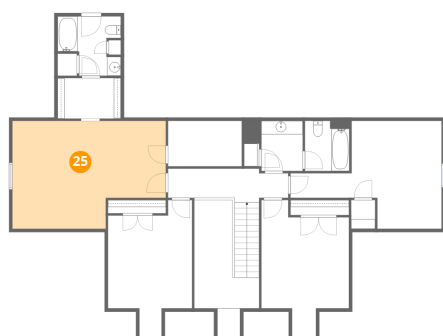
24 Floor 2 - Bedroom



Dimensions: 12'4" x 18'1"
Area: 192 sq. ft
Counted as living area: Yes

Heated: Yes
Finished: Yes
Enclosed: Yes
Contiguous: Yes
Permitted: Yes
Wet space: No
Addition: No
Conversion: No

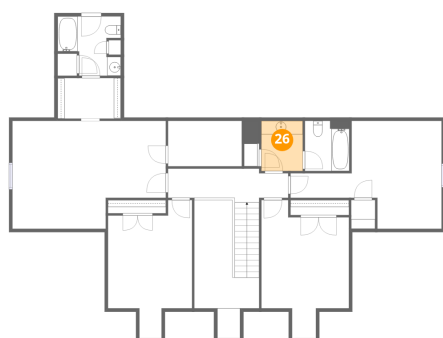
25 Floor 2 - Bedroom



Dimensions: 22'8" x 15'11"
Area: 320 sq. ft
Counted as living area: Yes

Heated: Yes
Finished: Yes
Enclosed: Yes
Contiguous: Yes
Permitted: Yes
Wet space: No
Addition: No
Conversion: No

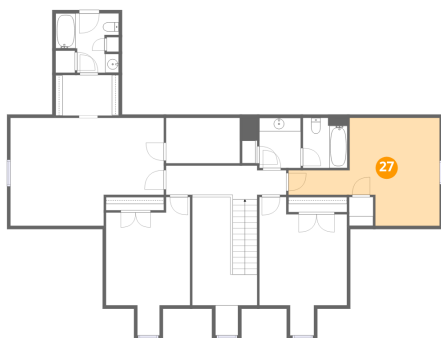
26 Floor 2 - Bath



Dimensions: 6'1" x 7'5"
Area: 45 sq. ft
Counted as living area: Yes

Heated: Yes
Finished: Yes
Enclosed: Yes
Contiguous: Yes
Permitted: Yes
Wet space: Yes
Addition: No
Conversion: No

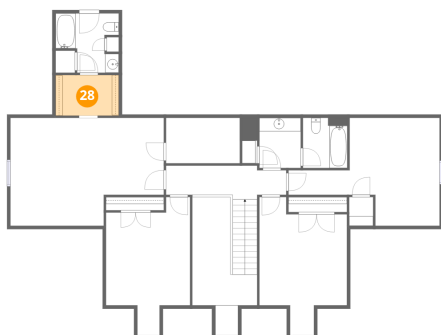
27 Floor 2 - Bedroom



Dimensions: 22'4" x 15'11"
Area: 227 sq. ft
Counted as living area: Yes

Heated: Yes
Finished: Yes
Enclosed: Yes
Contiguous: Yes
Permitted: Yes
Wet space: No
Addition: No
Conversion: No

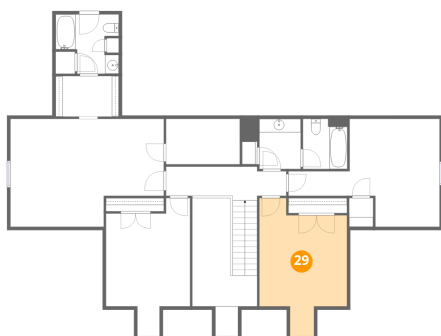
28 Floor 2 - W.I.C.



Dimensions: 9'4" x 6'0"
Area: 56 sq. ft
Counted as living area: Yes

Heated: Yes
Finished: Yes
Enclosed: Yes
Contiguous: Yes
Permitted: Yes
Wet space: No
Addition: No
Conversion: No

29 Floor 2 - Bedroom



Dimensions: 12'11" x 17'10"
Area: 199 sq. ft
Counted as living area: Yes

Heated: Yes
Finished: Yes
Enclosed: Yes
Contiguous: Yes
Permitted: Yes
Wet space: No
Addition: No
Conversion: No