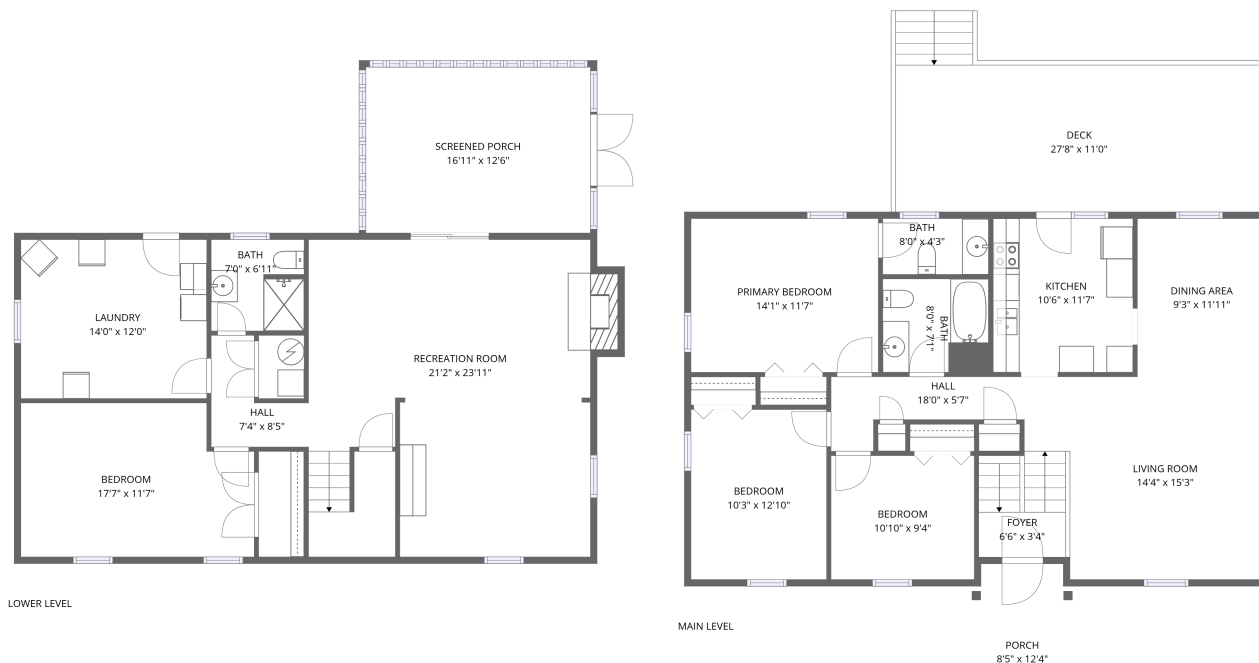


## Home data report

2972 Tree Swallow Road, Cave Spring, Roanoke, Roanoke County, Virginia, United States, 24018



**Total Area: 2000 sq. ft**

1st Floor: 845 sq. ft, 2nd Floor: 1155 sq. ft

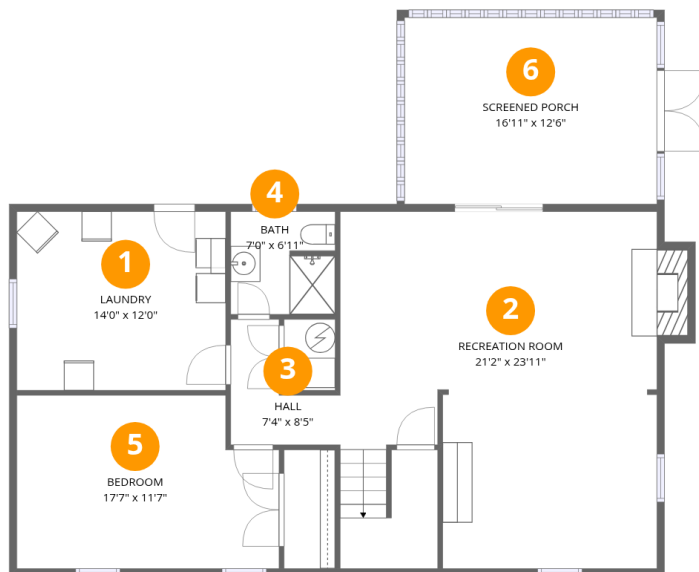
Excluded: Laundry 168 sq. ft, Screened porch 212 sq. ft, Undefined 16 sq. ft, Fireplace 14 sq. ft, Deck 306 sq. ft, Porch 100 sq. ft, Walls: 157 sq. ft

## Property summary



Home data report

2972 Tree Swallow Road, Cave Spring, Roanoke, Roanoke County, Virginia, United States, 24018



### Room dimensions

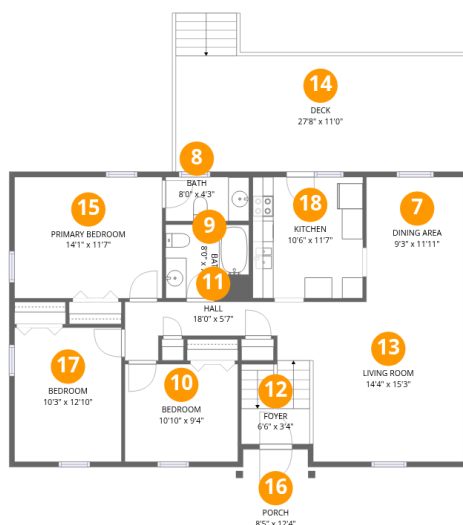
Floor 1

Total:845sqft Excluded: 410sqft

#		Dimensions	sqft	Counted as living area
1	Laundry	14'0" x 12'0"	168 sq. ft	No
2	Recreation Room	21'2" x 23'11"	507 sq. ft	Yes
3	Hall	7'4" x 8'5"	62 sq. ft	Yes
4	Bath	7'0" x 6'11"	48 sq. ft	Yes
5	Bedroom	17'7" x 11'7"	204 sq. ft	Yes
6	Screened Porch	16'11" x 12'6"	212 sq. ft	No

## Home data report

2972 Tree Swallow Road, Cave Spring, Roanoke, Roanoke County, Virginia, United States, 24018



## Room dimensions

Floor 2

Total:1155sqft Excluded: 406sqft

#		Dimensions	sqft	Counted as living area
7	Dining Area	9'3" x 11'11"	111 sq. ft	Yes
8	Bath	8'0" x 4'3"	34 sq. ft	Yes
9	Bath	8'0" x 7'1"	56 sq. ft	Yes
10	Bedroom	10'10" x 9'4"	101 sq. ft	Yes
11	Hall	18'0" x 5'7"	101 sq. ft	Yes
12	Foyer	6'6" x 3'4"	22 sq. ft	Yes
13	Living Room	14'4" x 15'3"	219 sq. ft	Yes
14	Deck	27'8" x 11'0"	305 sq. ft	No
15	Primary Bedroom	14'1" x 11'7"	163 sq. ft	Yes
16	Porch	8'5" x 12'4"	104 sq. ft	No
17	Bedroom	10'3" x 12'10"	131 sq. ft	Yes

Home data report

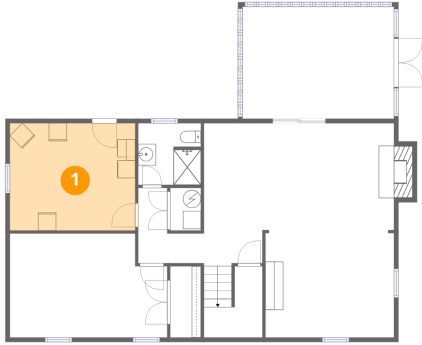
**2972 Tree Swallow Road, Cave Spring, Roanoke, Roanoke  
County, Virginia, United States, 24018**

#		Dimensions	sqft	Counted as living area
18	Kitchen	10'6" x 11'7"	122 sq. ft	Yes

2972 Tree Swallow Road, Cave Spring, Roanoke, Roanoke  
County, Virginia, United States, 24018

**1** Floor 1 - Laundry

---

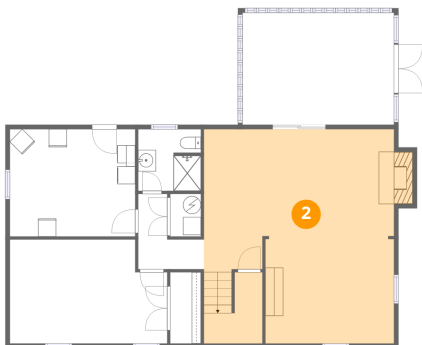


Dimensions: 14'0" x 12'0"  
Area: 168 sq. ft  
Counted as living area: No

Heated: Yes  
Finished: No  
Enclosed: Yes  
Contiguous: Yes  
Permitted: Yes  
Wet space: No  
Addition: No  
Conversion: No

**2** Floor 1 - Recreation Room

---

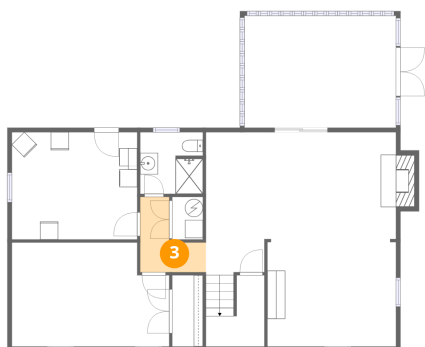


Dimensions: 21'2" x 23'11"  
Area: 507 sq. ft  
Counted as living area: Yes

Heated: Yes  
Finished: Yes  
Enclosed: Yes  
Contiguous: Yes  
Permitted: Yes  
Wet space: No  
Addition: No  
Conversion: No

2972 Tree Swallow Road, Cave Spring, Roanoke, Roanoke County, Virginia, United States, 24018

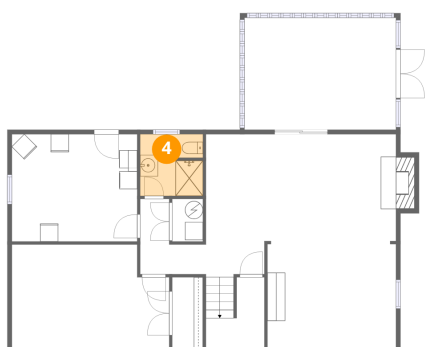
**3** Floor 1 - Hall



Dimensions: 7'4" x 8'5"  
Area: 62 sq. ft  
Counted as living area: Yes

Heated: Yes  
Finished: Yes  
Enclosed: Yes  
Contiguous: Yes  
Permitted: Yes  
Wet space: No  
Addition: No  
Conversion: No

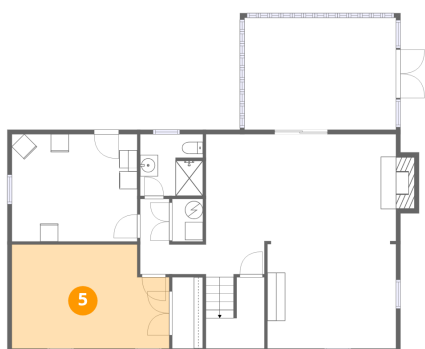
**4** Floor 1 - Bath



Dimensions: 7'0" x 6'11"  
Area: 48 sq. ft  
Counted as living area: Yes

Heated: Yes  
Finished: Yes  
Enclosed: Yes  
Contiguous: Yes  
Permitted: Yes  
Wet space: Yes  
Addition: No  
Conversion: No

**5** Floor 1 - Bedroom

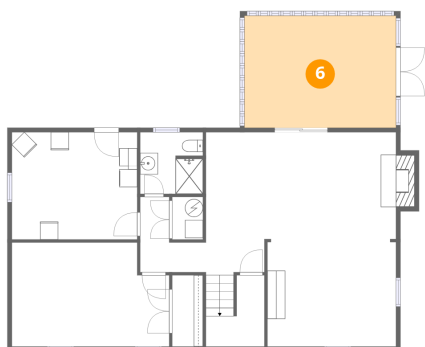


Dimensions: 17'7" x 11'7"  
Area: 204 sq. ft  
Counted as living area: Yes

Heated: Yes  
Finished: Yes  
Enclosed: Yes  
Contiguous: Yes  
Permitted: Yes  
Wet space: No  
Addition: No  
Conversion: No

2972 Tree Swallow Road, Cave Spring, Roanoke, Roanoke County, Virginia, United States, 24018

**6** Floor 1 - Screened Porch



Dimensions: 16'11" x 12'6"

Area: 212 sq. ft

Counted as living area: No

Heated: No

Finished: No

Enclosed: No

Contiguous: Yes

Permitted: Yes

Wet space: No

Addition: No

Conversion: No

**7** Floor 2 - Dining Area



Dimensions: 9'3" x 11'11"

Area: 111 sq. ft

Counted as living area: Yes

Heated: Yes

Finished: Yes

Enclosed: Yes

Contiguous: Yes

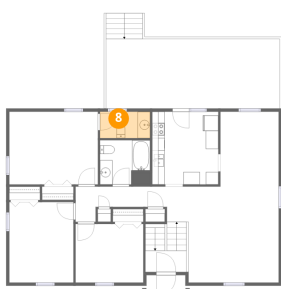
Permitted: Yes

Wet space: No

Addition: No

Conversion: No

**8** Floor 2 - Bath



Dimensions: 8'0" x 4'3"

Area: 34 sq. ft

Counted as living area: Yes

Heated: Yes

Finished: Yes

Enclosed: Yes

Contiguous: Yes

Permitted: Yes

Wet space: Yes

Addition: No

Conversion: No

2972 Tree Swallow Road, Cave Spring, Roanoke, Roanoke County, Virginia, United States, 24018

9 Floor 2 - Bath



Dimensions: 8'0" x 7'1"  
Area: 56 sq. ft  
Counted as living area: Yes

Heated: Yes  
Finished: Yes  
Enclosed: Yes  
Contiguous: Yes  
Permitted: Yes  
Wet space: Yes  
Addition: No  
Conversion: No

10 Floor 2 - Bedroom



Dimensions: 10'10" x 9'4"  
Area: 101 sq. ft  
Counted as living area: Yes

Heated: Yes  
Finished: Yes  
Enclosed: Yes  
Contiguous: Yes  
Permitted: Yes  
Wet space: No  
Addition: No  
Conversion: No

11 Floor 2 - Hall



Dimensions: 18'0" x 5'7"  
Area: 101 sq. ft  
Counted as living area: Yes

Heated: Yes  
Finished: Yes  
Enclosed: Yes  
Contiguous: Yes  
Permitted: Yes  
Wet space: No  
Addition: No  
Conversion: No

2972 Tree Swallow Road, Cave Spring, Roanoke, Roanoke County, Virginia, United States, 24018

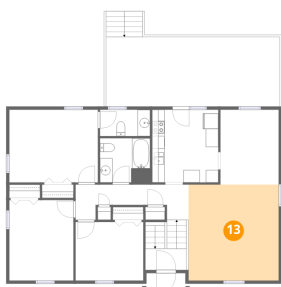
**12** Floor 2 - Foyer



Dimensions: 6'6" x 3'4"  
Area: 22 sq. ft  
Counted as living area: Yes

Heated: Yes  
Finished: Yes  
Enclosed: Yes  
Contiguous: Yes  
Permitted: Yes  
Wet space: No  
Addition: No  
Conversion: No

**13** Floor 2 - Living Room



Dimensions: 14'4" x 15'3"  
Area: 219 sq. ft  
Counted as living area: Yes

Heated: Yes  
Finished: Yes  
Enclosed: Yes  
Contiguous: Yes  
Permitted: Yes  
Wet space: No  
Addition: No  
Conversion: No

**14** Floor 2 - Deck

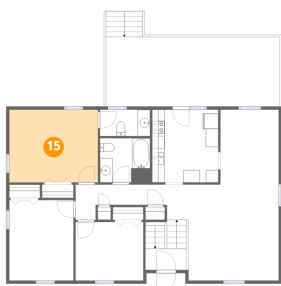


Dimensions: 27'8" x 11'0"  
Area: 305 sq. ft  
Counted as living area: No

Heated: No  
Finished: No  
Enclosed: No  
Contiguous: Yes  
Permitted: Yes  
Wet space: No  
Addition: No  
Conversion: No

# 2972 Tree Swallow Road, Cave Spring, Roanoke, Roanoke County, Virginia, United States, 24018

## 15 Floor 2 - Primary Bedroom



Dimensions: 14'1" x 11'7"  
Area: 163 sq. ft  
Counted as living area: Yes

Heated: Yes  
Finished: Yes  
Enclosed: Yes  
Contiguous: Yes  
Permitted: Yes  
Wet space: No  
Addition: No  
Conversion: No

## 16 Floor 2 - Porch



Dimensions: 8'5" x 12'4"  
Area: 104 sq. ft  
Counted as living area: No

Heated: No  
Finished: No  
Enclosed: No  
Contiguous: Yes  
Permitted: Yes  
Wet space: No  
Addition: No  
Conversion: No

## 17 Floor 2 - Bedroom



Dimensions: 10'3" x 12'10"  
Area: 131 sq. ft  
Counted as living area: Yes

Heated: Yes  
Finished: Yes  
Enclosed: Yes  
Contiguous: Yes  
Permitted: Yes  
Wet space: No  
Addition: No  
Conversion: No

Home data report

2972 Tree Swallow Road, Cave Spring, Roanoke, Roanoke  
County, Virginia, United States, 24018

**18** Floor 2 - Kitchen

---



Dimensions: 10'6" x 11'7"

Area: 122 sq. ft

Counted as living area: Yes

Heated: Yes

Finished: Yes

Enclosed: Yes

Contiguous: Yes

Permitted: Yes

Wet space: No

Addition: No

Conversion: No