

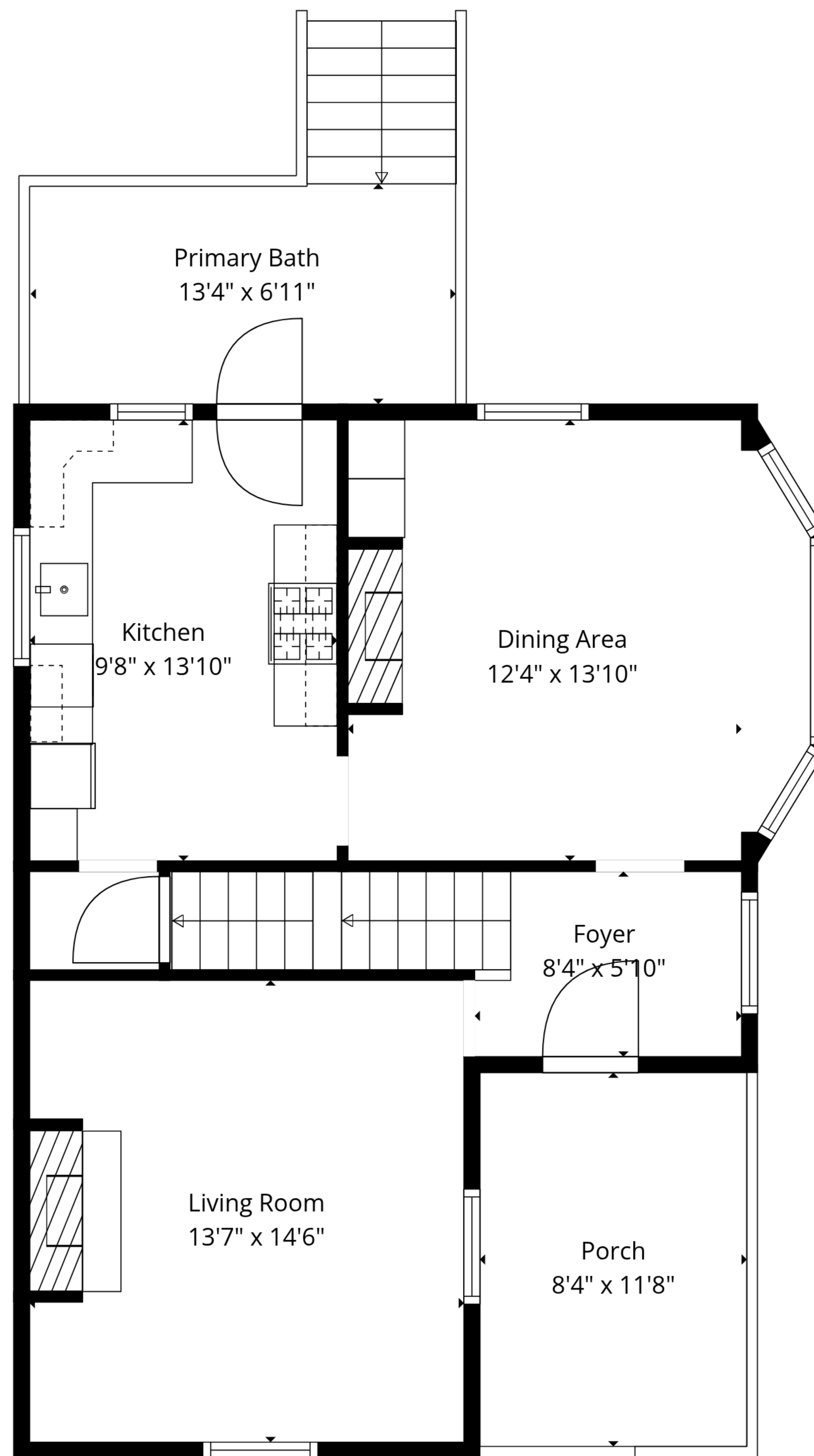
Basement
22'3" x 32'0"

Shower Room
4'2.5" x 3'7"



TOTAL: 2313 sq. ft
 Basement: 609 sq. ft, 1st floor: 724 sq. ft, 2nd floor: 613 sq. ft, 3rd floor: 367 sq. ft
 EXCLUDED AREAS: PORCH: 98 sq. ft, BAY WINDOW: 22 sq. ft, LOW CEILING: 143 sq. ft,
 WALLS: 221 sq. ft

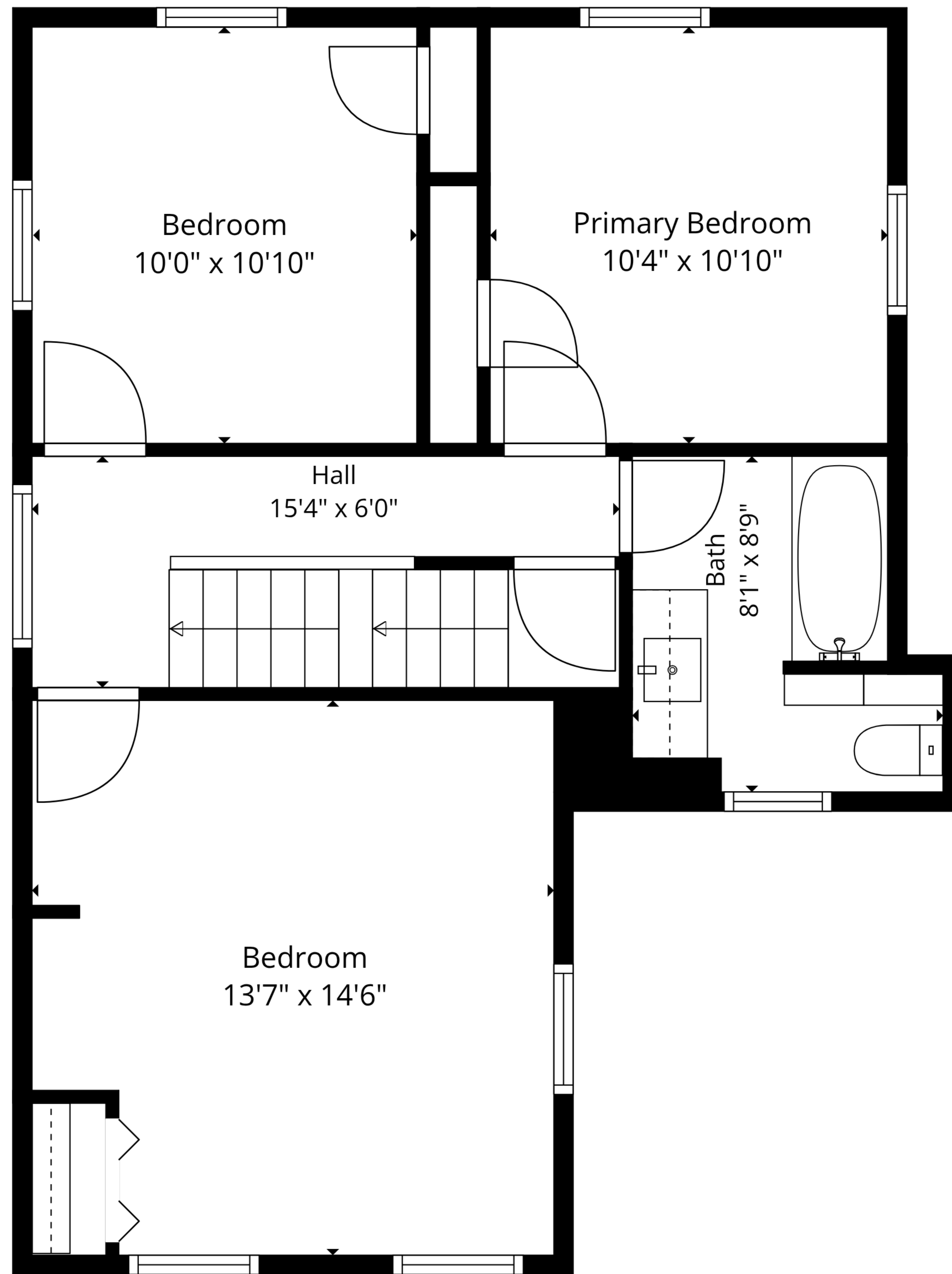




TOTAL: 2313 sq. ft

Basement: 609 sq. ft, 1st floor: 724 sq. ft, 2nd floor: 613 sq. ft, 3rd floor: 367 sq. ft
 EXCLUDED AREAS: PORCH: 98 sq. ft, BAY WINDOW: 22 sq. ft, LOW CEILING: 143 sq. ft,
 WALLS: 221 sq. ft

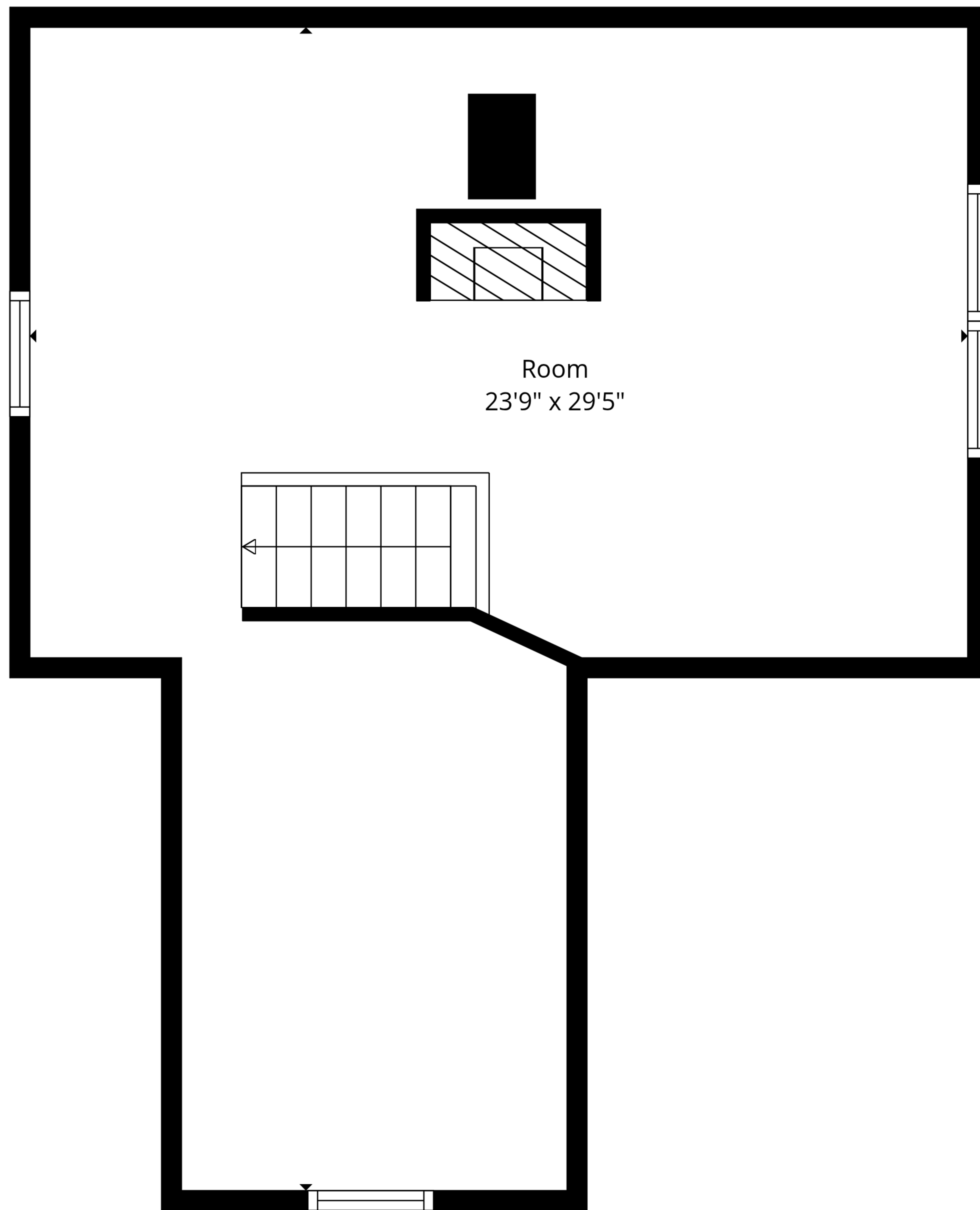




TOTAL: 2313 sq. ft

Basement: 609 sq. ft, 1st floor: 724 sq. ft, 2nd floor: 613 sq. ft, 3rd floor: 367 sq. ft
 EXCLUDED AREAS: PORCH: 98 sq. ft, BAY WINDOW: 22 sq. ft, LOW CEILING: 143 sq. ft,
 WALLS: 221 sq. ft

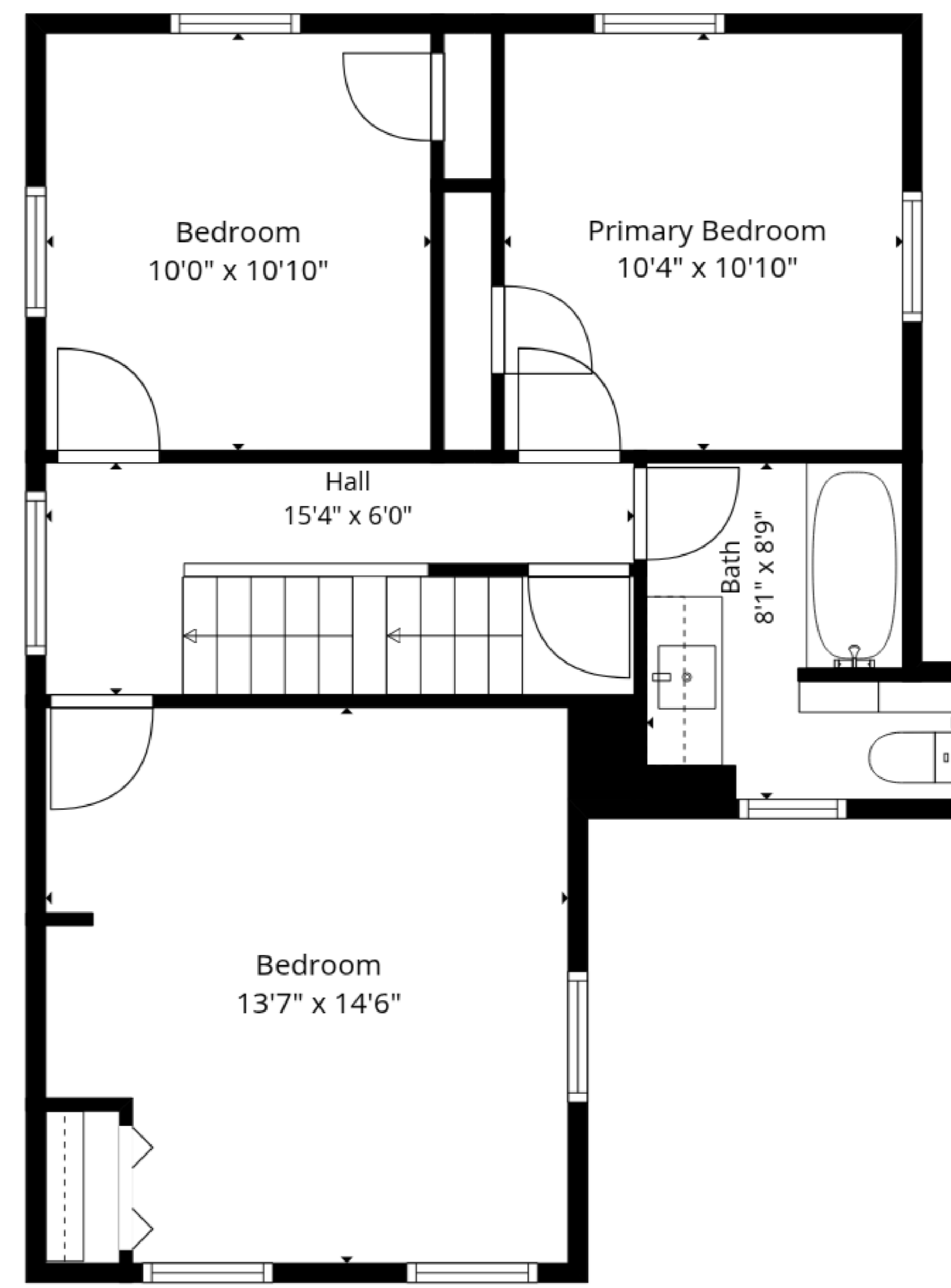




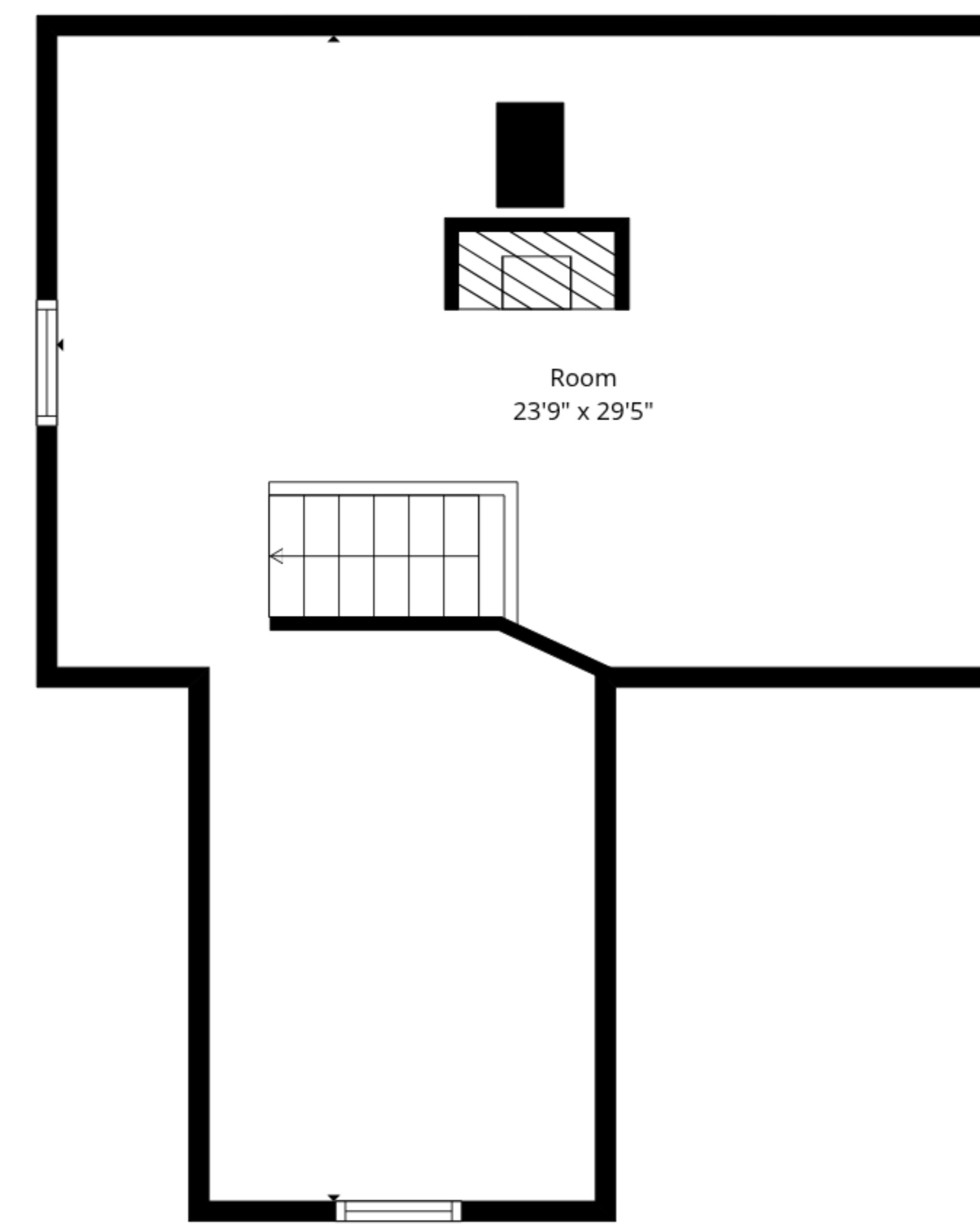
TOTAL: 2313 sq. ft

Basement: 609 sq. ft, 1st floor: 724 sq. ft, 2nd floor: 613 sq. ft, 3rd floor: 367 sq. ft
EXCLUDED AREAS: PORCH: 98 sq. ft, BAY WINDOW: 22 sq. ft, LOW CEILING: 143 sq. ft,
WALLS: 221 sq. ft

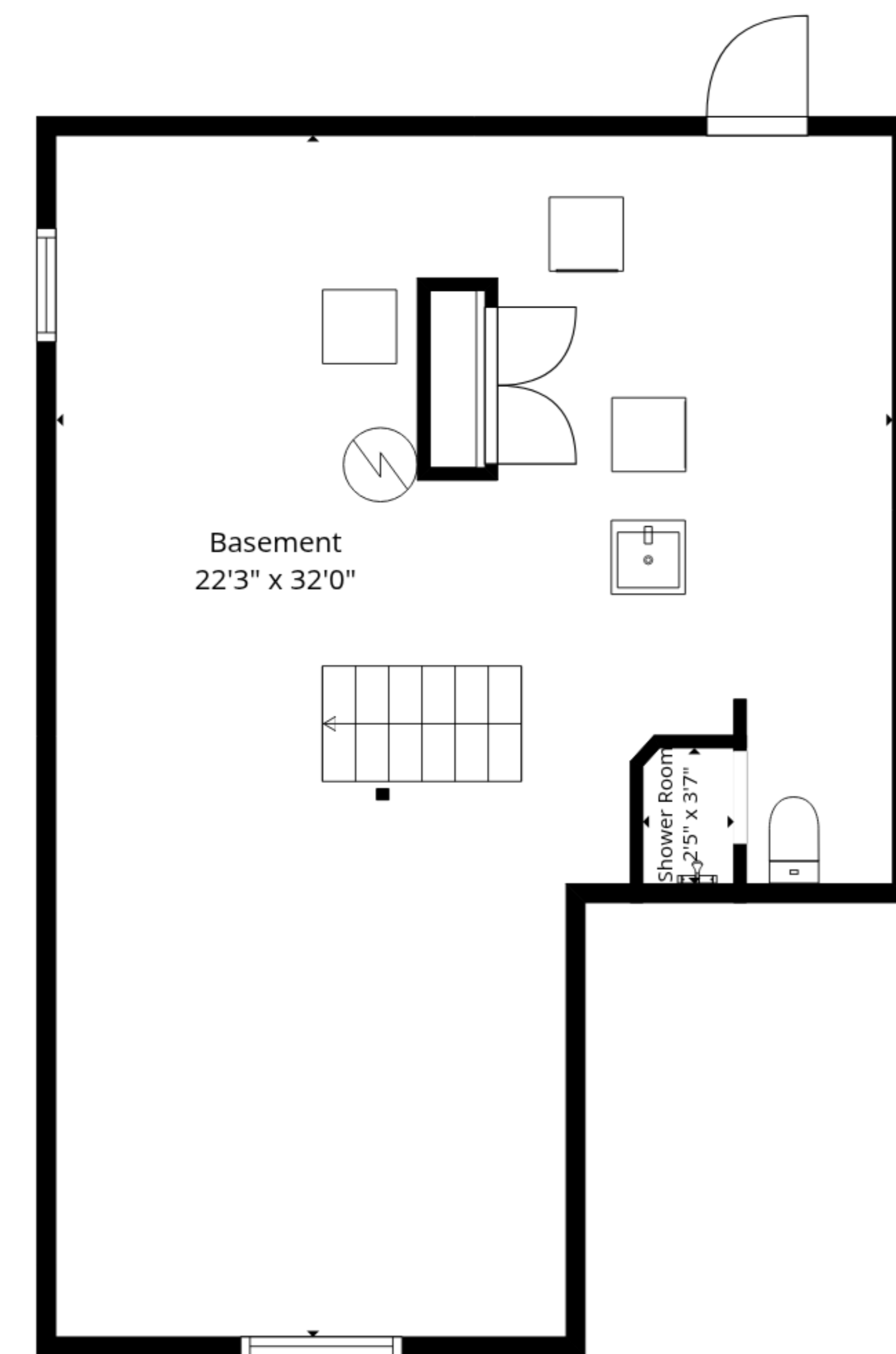




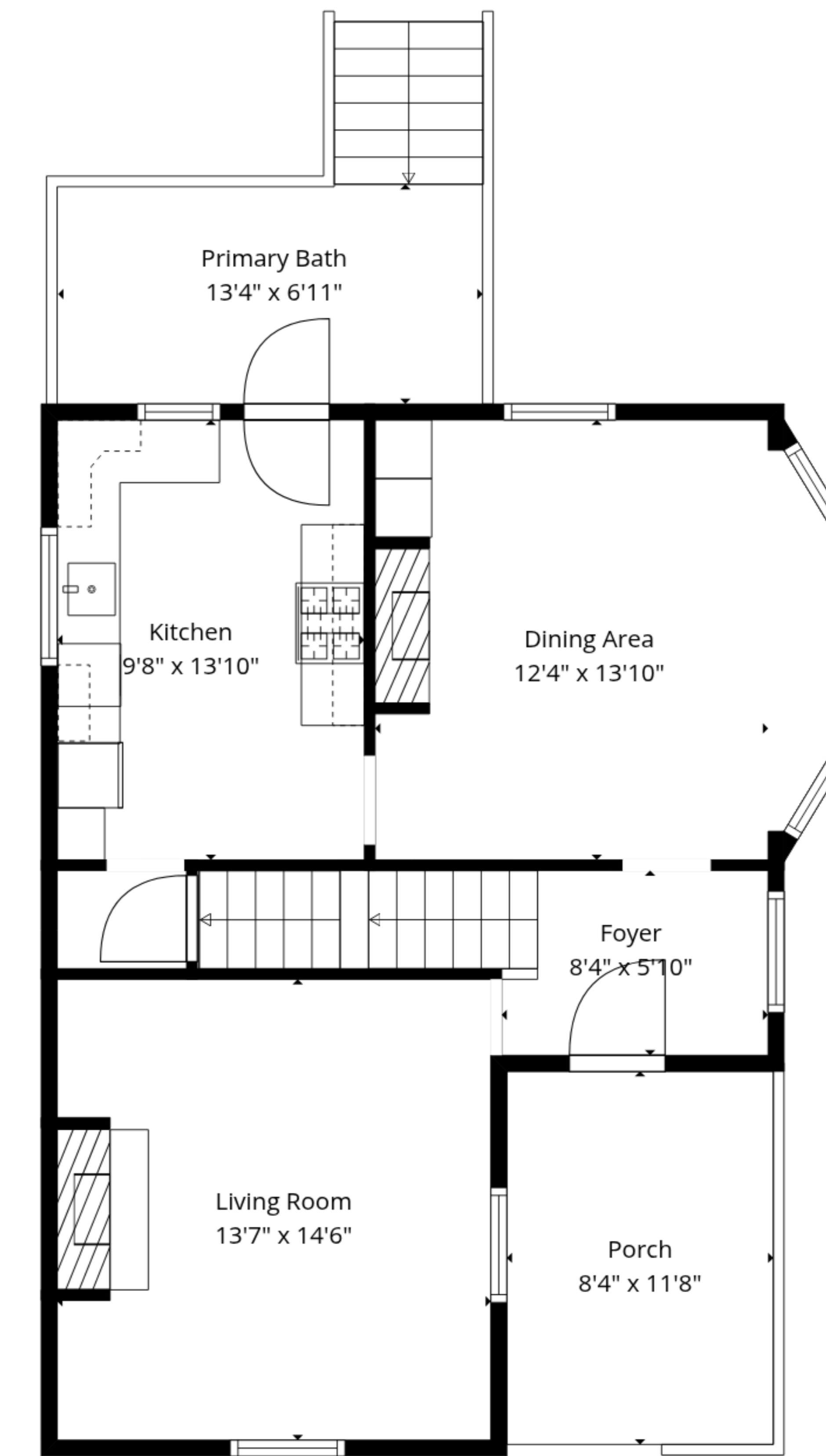
2nd Floor



3rd Floor



Basement



1st Floor

TOTAL: 2313 sq. ft

Basement: 609 sq. ft, 1st floor: 724 sq. ft, 2nd floor: 613 sq. ft, 3rd floor: 367 sq. ft
 EXCLUDED AREAS: PORCH: 98 sq. ft, BAY WINDOW: 22 sq. ft, LOW CEILING: 143 sq. ft,
 WALLS: 221 sq. ft

