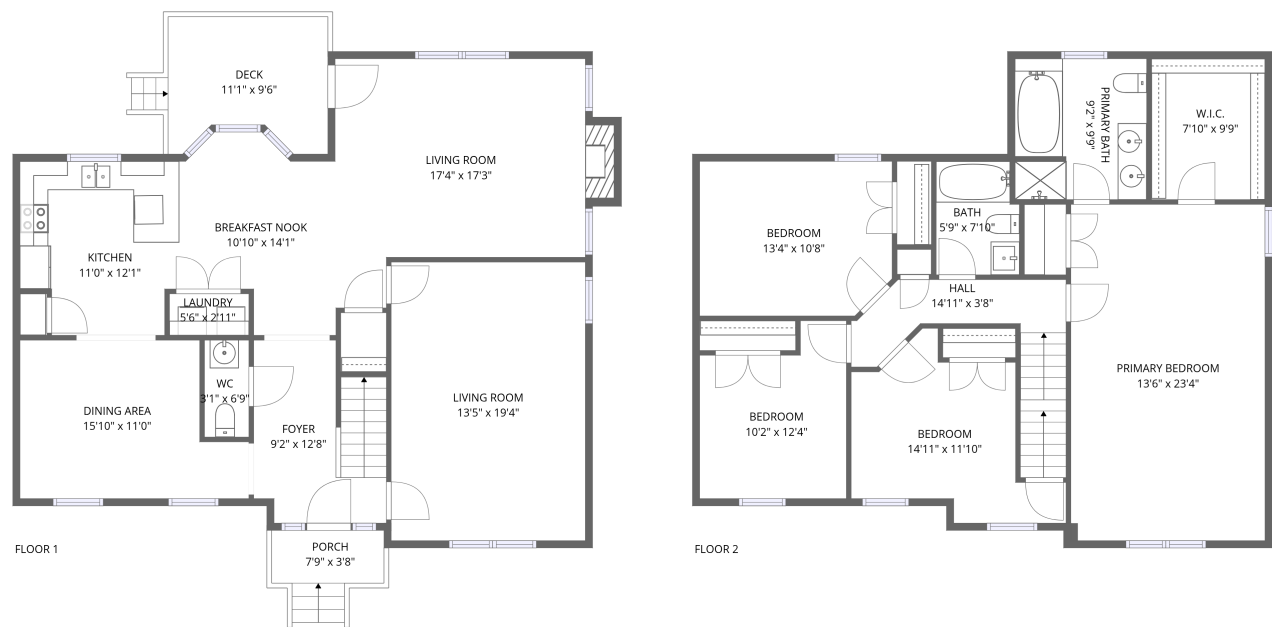


Home report

6900 Dartmouth Avenue, Crestview, Richmond, Henrico County,
Virginia, United States, 23226



Total Area: 2201 sq. ft
Floor 1: 1107 sq. ft, Floor 2: 1094 sq. ft
Excluded: Porch 38 sq. ft, Deck 100 sq. ft, Fireplace 12 sq. ft, Walls: 146 sq. ft

Property summary

 **2** Floors

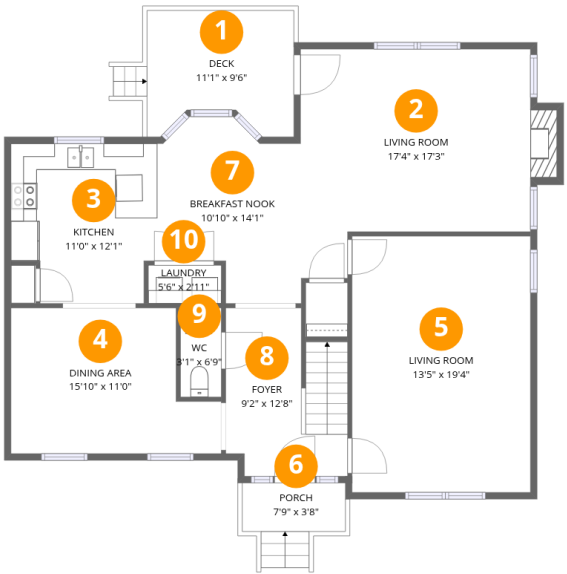
 **4** Bedrooms

 **2** Bathrooms

 **1** Half baths

Home report

6900 Dartmouth Avenue, Crestview, Richmond, Henrico County,
Virginia, United States, 23226



Room dimensions

Floor 1 Total:1107sqft Excluded: 150sqft

#		Max Dimensions	sqft	Included
1	Deck	11'1" x 9'6"	100 sq. ft	No
2	Living Room	17'4" x 17'3"	262 sq. ft	Yes
3	Kitchen	11'0" x 12'1"	123 sq. ft	Yes
4	Dining Area	15'10" x 11'0"	150 sq. ft	Yes
5	Living Room	13'5" x 19'4"	260 sq. ft	Yes
6	Porch	7'9" x 3'8"	38 sq. ft	No
7	Breakfast Nook	10'10" x 14'1"	125 sq. ft	Yes
8	Foyer	9'2" x 12'8"	104 sq. ft	Yes
9	WC	3'1" x 6'9"	21 sq. ft	Yes
10	Laundry	5'6" x 2'11"	16 sq. ft	Yes

Home report

6900 Dartmouth Avenue, Crestview, Richmond, Henrico County,
Virginia, United States, 23226



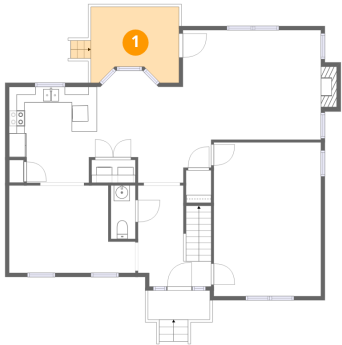
Room dimensions

Floor 2 Total:1094sqft Excluded: 0sqft

#		Max Dimensions	sqft	Included
11	W.I.C.	7'10" x 9'9"	77 sq. ft	Yes
12	Primary Bedroom	13'6" x 23'4"	314 sq. ft	Yes
13	Bath	5'9" x 7'10"	43 sq. ft	Yes
14	Bedroom	14'11" x 11'10"	129 sq. ft	Yes
15	Bedroom	10'2" x 12'4"	109 sq. ft	Yes
16	Bedroom	13'4" x 10'8"	140 sq. ft	Yes
17	Primary Bath	9'2" x 9'9"	88 sq. ft	Yes
18	Hall	14'11" x 3'8"	84 sq. ft	Yes

6900 Dartmouth Avenue, Crestview, Richmond, Henrico County,
Virginia, United States, 23226

1 Floor 1 - Deck



Max Dimensions: 11'1" x 9'6"
Calculated Area: 100 sq. ft
Included: No

Heated: No
Finished: No
Enclosed: No
Contiguous: Yes
Permitted: Yes
Wet space: No
Addition: No
Conversion: No

2 Floor 1 - Living Room



Max Dimensions: 17'4" x 17'3"
Calculated Area: 262 sq. ft
Included: Yes

Heated: Yes
Finished: Yes
Enclosed: Yes
Contiguous: Yes
Permitted: Yes
Wet space: No
Addition: No
Conversion: No

3 Floor 1 - Kitchen



Max Dimensions: 11'0" x 12'1"
Calculated Area: 123 sq. ft
Included: Yes

Heated: Yes
Finished: Yes
Enclosed: Yes
Contiguous: Yes
Permitted: Yes
Wet space: No
Addition: No
Conversion: No

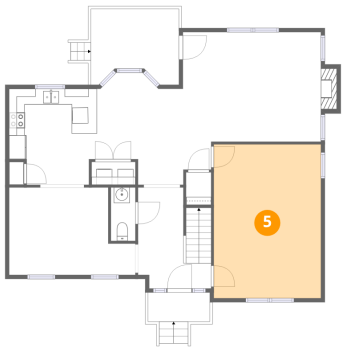
4 Floor 1 - Dining Area



Max Dimensions: 15'10" x 11'0"
Calculated Area: 150 sq. ft
Included: Yes

Heated: Yes
Finished: Yes
Enclosed: Yes
Contiguous: Yes
Permitted: Yes
Wet space: No
Addition: No
Conversion: No

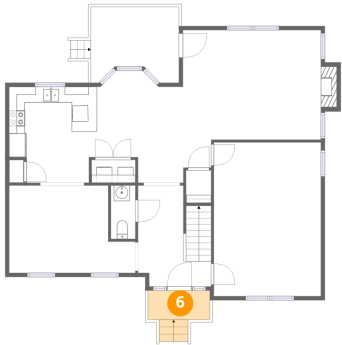
5 Floor 1 - Living Room



Max Dimensions: 13'5" x 19'4"
Calculated Area: 260 sq. ft
Included: Yes

Heated: Yes
Finished: Yes
Enclosed: Yes
Contiguous: Yes
Permitted: Yes
Wet space: No
Addition: No
Conversion: No

6 Floor 1 - Porch



Max Dimensions: 7'9" x 3'8"
Calculated Area: 38 sq. ft
Included: No

Heated: No
Finished: No
Enclosed: No
Contiguous: Yes
Permitted: Yes
Wet space: No
Addition: No
Conversion: No

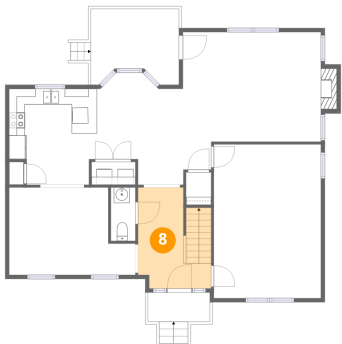
7 Floor 1 - Breakfast Nook



Max Dimensions: 10'10" x 14'1"
Calculated Area: 125 sq. ft
Included: Yes

Heated: Yes
Finished: Yes
Enclosed: Yes
Contiguous: Yes
Permitted: Yes
Wet space: No
Addition: No
Conversion: No

8 Floor 1 - Foyer



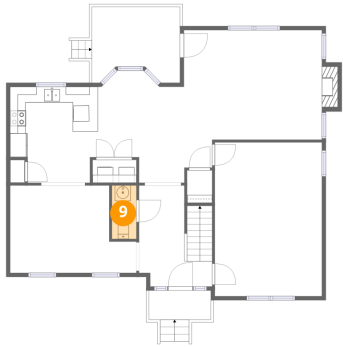
Max Dimensions: 9'2" x 12'8"
Calculated Area: 104 sq. ft
Included: Yes

Heated: Yes
Finished: Yes
Enclosed: Yes
Contiguous: Yes
Permitted: Yes
Wet space: No
Addition: No
Conversion: No

Home report

6900 Dartmouth Avenue, Crestview, Richmond, Henrico County,
Virginia, United States, 23226

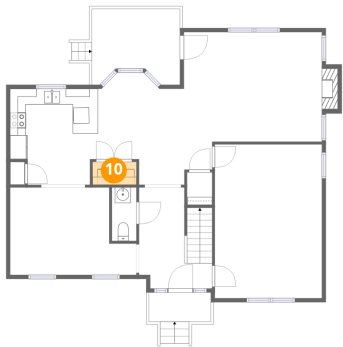
9 Floor 1 - WC



Max Dimensions: 3'1" x 6'9"
Calculated Area: 21 sq. ft
Included: Yes

Heated: Yes
Finished: Yes
Enclosed: Yes
Contiguous: Yes
Permitted: Yes
Wet space: Yes
Addition: No
Conversion: No

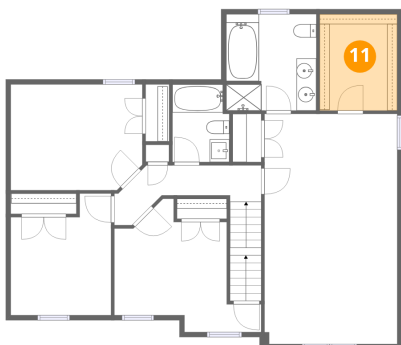
10 Floor 1 - Laundry



Max Dimensions: 5'6" x
2'11"
Calculated Area: 16 sq. ft
Included: Yes

Heated: Yes
Finished: Yes
Enclosed: Yes
Contiguous:
Yes
Permitted: Yes
Wet space: No
Addition: No
Conversion: No

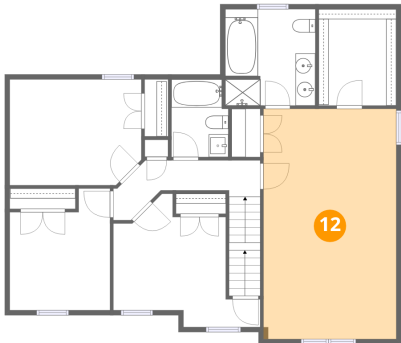
11 Floor 2 - W.I.C.



Max Dimensions: 7'10" x
9'9"
Calculated Area: 77 sq. ft
Included: Yes

Heated: Yes
Finished: Yes
Enclosed: Yes
Contiguous:
Yes
Permitted: Yes
Wet space: No
Addition: No
Conversion: No

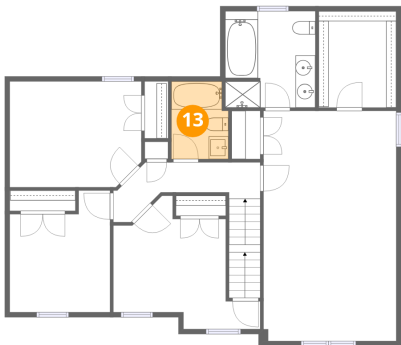
12 Floor 2 - Primary Bedroom



Max Dimensions: 13'6" x 23'4"
Calculated Area: 314 sq. ft
Included: Yes

Heated: Yes
Finished: Yes
Enclosed: Yes
Contiguous: Yes
Permitted: Yes
Wet space: No
Addition: No
Conversion: No

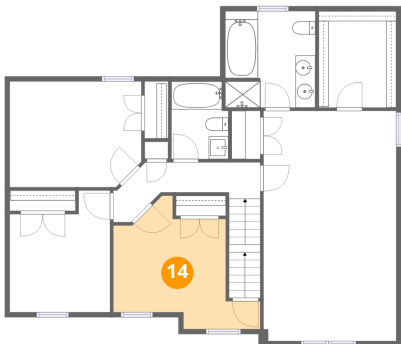
13 Floor 2 - Bath



Max Dimensions: 5'9" x 7'10"
Calculated Area: 43 sq. ft
Included: Yes

Heated: Yes
Finished: Yes
Enclosed: Yes
Contiguous: Yes
Permitted: Yes
Wet space: Yes
Addition: No
Conversion: No

14 Floor 2 - Bedroom

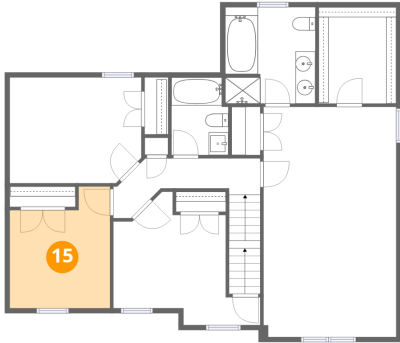


Max Dimensions: 14'11" x 11'10"
Calculated Area: 129 sq. ft
Included: Yes

Heated: Yes
Finished: Yes
Enclosed: Yes
Contiguous: Yes
Permitted: Yes
Wet space: No
Addition: No
Conversion: No

6900 Dartmouth Avenue, Crestview, Richmond, Henrico County,
Virginia, United States, 23226

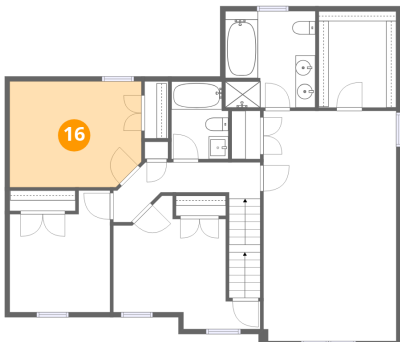
15 Floor 2 - Bedroom



Max Dimensions: 10'2" x 12'4"
Calculated Area: 109 sq. ft
Included: Yes

Heated: Yes
Finished: Yes
Enclosed: Yes
Contiguous: Yes
Permitted: Yes
Wet space: No
Addition: No
Conversion: No

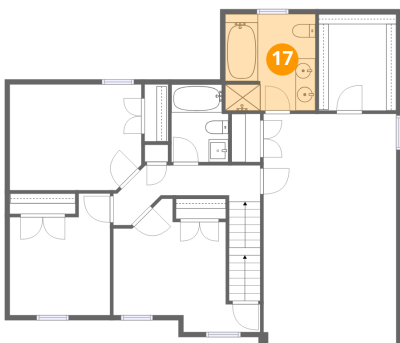
16 Floor 2 - Bedroom



Max Dimensions: 13'4" x 10'8"
Calculated Area: 140 sq. ft
Included: Yes

Heated: Yes
Finished: Yes
Enclosed: Yes
Contiguous: Yes
Permitted: Yes
Wet space: No
Addition: No
Conversion: No

17 Floor 2 - Primary Bath

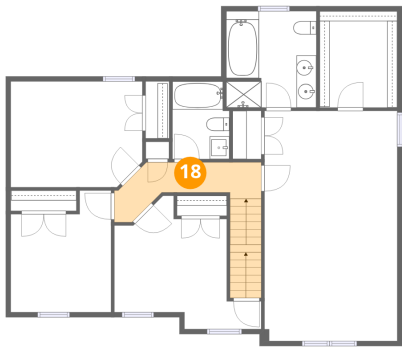


Max Dimensions: 9'2" x 9'9"
Calculated Area: 88 sq. ft
Included: Yes

Heated: Yes
Finished: Yes
Enclosed: Yes
Contiguous: Yes
Permitted: Yes
Wet space: Yes
Addition: No
Conversion: No

6900 Dartmouth Avenue, Crestview, Richmond, Henrico County,
Virginia, United States, 23226

18 Floor 2 - Hall



Max Dimensions: 14'11" x 3'8"
Calculated Area: 84 sq. ft
Included: Yes

Heated: Yes
Finished: Yes
Enclosed: Yes
Contiguous: Yes
Permitted: Yes
Wet space: No
Addition: No
Conversion: No