

Home data report

11723 Rolling Pine Lane, Bayonet Point, Port Richey, Pasco County, Florida, United States, 34668



Total Area: 1777 sq. ft

Floor 1: 1280 sq. ft, Floor 2: 497 sq. ft

Excluded: Garage 243 sq. ft, Porch/deck 283 sq. ft, Back deck 323 sq. ft, Fireplace 9 sq. ft, Open to below 351 sq. ft, Walls: 185 sq. ft

Property summary

2 Floors

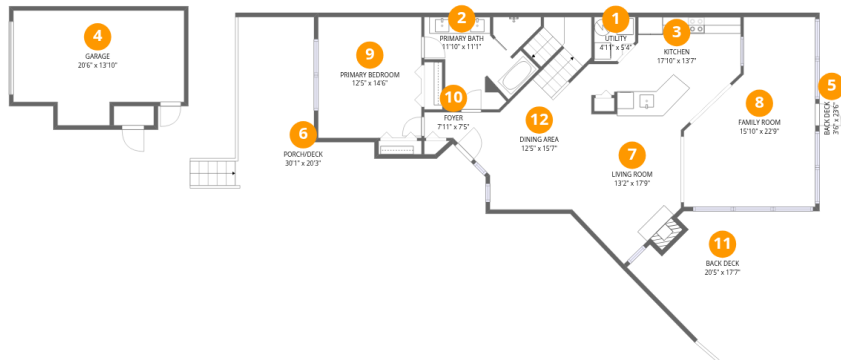
2 Bedrooms

2 Bathrooms

1 Garages

Home data report

11723 Rolling Pine Lane, Bayonet Point, Port Richey, Pasco County, Florida, United States, 34668



Room dimensions

Floor 1 Total:1280sqft Excluded: 858sqft

#		Dimensions	sqft	Counted as living area
1	Utility	4'11" x 5'4"	24 sq. ft	Yes
2	Primary Bath	11'10" x 11'1"	118 sq. ft	Yes
3	Kitchen	17'10" x 13'7"	167 sq. ft	Yes
4	Garage	20'6" x 13'10"	243 sq. ft	No
5	Back Deck	3'6" x 23'6"	83 sq. ft	No
6	Porch/Deck	30'1" x 20'3"	283 sq. ft	No
7	Living Room	13'2" x 17'9"	181 sq. ft	Yes
8	Family Room	15'10" x 22'9"	287 sq. ft	Yes
9	Primary Bedroom	12'5" x 14'6"	180 sq. ft	Yes
10	Foyer	7'11" x 7'5"	34 sq. ft	Yes
11	Back Deck	20'5" x 17'7"	239 sq. ft	No

Home data report

11723 Rolling Pine Lane, Bayonet Point, Port Richey, Pasco  
County, Florida, United States, 34668

#		Dimensions	sqft	Counted as living area
12	Dining Area	12'5" x 15'7"	214 sq. ft	Yes

11723 Rolling Pine Lane, Bayonet Point, Port Richey, Pasco  
County, Florida, United States, 34668



Room dimensions

Floor 2 Total:497sqft    Excluded: 351sqft

#		Dimensions	sqft	Counted as living area
13	Bedroom	13'11" x 11'5"	130 sq. ft	Yes
14	Sitting Room	12'7" x 19'0"	228 sq. ft	Yes
15	Bath	7'6" x 4'9"	36 sq. ft	Yes
16	Open To Below	13'0" x 29'8"	351 sq. ft	No
17	W.I.C.	6'9" x 11'3"	46 sq. ft	Yes

11723 Rolling Pine Lane, Bayonet Point, Port Richey, Pasco  
County, Florida, United States, 34668

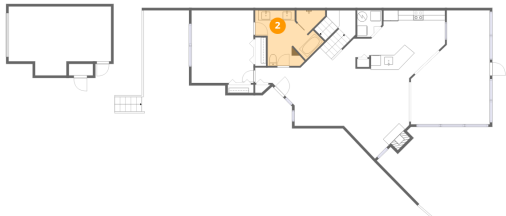
1 Floor 1 - Utility



Dimensions: 4'11" x 5'4"  
Area: 24 sq. ft  
Counted as living area: Yes

Heated: Yes  
Finished: Yes  
Enclosed: Yes  
Contiguous: Yes  
Permitted: Yes  
Wet space: No  
Addition: No  
Conversion: No

2 Floor 1 - Primary Bath



Dimensions: 11'10" x 11'1"  
Area: 118 sq. ft  
Counted as living area: Yes

Heated: Yes  
Finished: Yes  
Enclosed: Yes  
Contiguous: Yes  
Permitted: Yes  
Wet space: Yes  
Addition: No  
Conversion: No

11723 Rolling Pine Lane, Bayonet Point, Port Richey, Pasco  
County, Florida, United States, 34668

3 Floor 1 - Kitchen



Dimensions: 17'10" x 13'7"  
Area: 167 sq. ft  
Counted as living area: Yes

Heated: Yes  
Finished: Yes  
Enclosed: Yes  
Contiguous: Yes  
Permitted: Yes  
Wet space: No  
Addition: No  
Conversion: No

4 Floor 1 - Garage



Dimensions: 20'6" x 13'10"  
Area: 243 sq. ft  
Counted as living area: No

Heated: No  
Finished: No  
Enclosed: Yes  
Contiguous: Yes  
Permitted: Yes  
Wet space: No  
Addition: No  
Conversion: No

5 Floor 1 - Back Deck

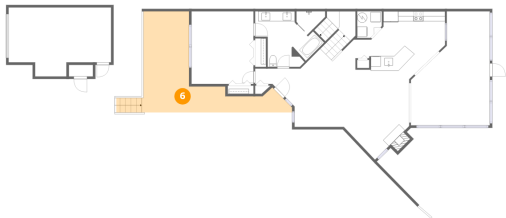


Dimensions: 3'6" x 23'6"  
Area: 83 sq. ft  
Counted as living area: No

Heated: No  
Finished: No  
Enclosed: No  
Contiguous: Yes  
Permitted: Yes  
Wet space: No  
Addition: No  
Conversion: No

11723 Rolling Pine Lane, Bayonet Point, Port Richey, Pasco  
County, Florida, United States, 34668

6 Floor 1 - Porch/Deck



Dimensions: 30'1" x 20'3"  
Area: 283 sq. ft  
Counted as living area: No

Heated: No  
Finished: No  
Enclosed: No  
Contiguous: Yes  
Permitted: Yes  
Wet space: No  
Addition: No  
Conversion: No

7 Floor 1 - Living Room



Dimensions: 13'2" x 17'9"  
Area: 181 sq. ft  
Counted as living area: Yes

Heated: Yes  
Finished: Yes  
Enclosed: Yes  
Contiguous: Yes  
Permitted: Yes  
Wet space: No  
Addition: No  
Conversion: No

8 Floor 1 - Family Room

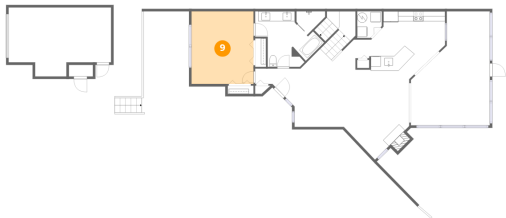


Dimensions: 15'10" x 22'9"  
Area: 287 sq. ft  
Counted as living area: Yes

Heated: Yes  
Finished: Yes  
Enclosed: Yes  
Contiguous: Yes  
Permitted: Yes  
Wet space: No  
Addition: No  
Conversion: No

11723 Rolling Pine Lane, Bayonet Point, Port Richey, Pasco  
County, Florida, United States, 34668

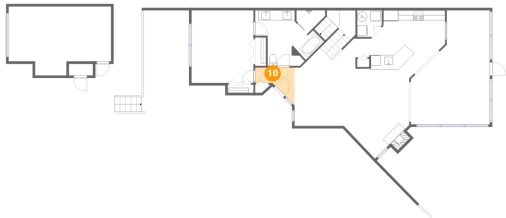
9 Floor 1 - Primary Bedroom



Dimensions: 12'5" x 14'6"  
Area: 180 sq. ft  
Counted as living area: Yes

Heated: Yes  
Finished: Yes  
Enclosed: Yes  
Contiguous: Yes  
Permitted: Yes  
Wet space: No  
Addition: No  
Conversion: No

10 Floor 1 - Foyer



Dimensions: 7'11" x 7'5"  
Area: 34 sq. ft  
Counted as living area: Yes

Heated: Yes  
Finished: Yes  
Enclosed: Yes  
Contiguous: Yes  
Permitted: Yes  
Wet space: No  
Addition: No  
Conversion: No

11 Floor 1 - Back Deck



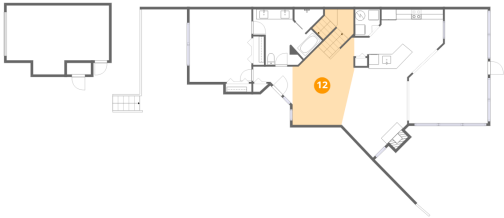
Dimensions: 20'5" x 17'7"  
Area: 239 sq. ft  
Counted as living area: No

Heated: No  
Finished: No  
Enclosed: No  
Contiguous: Yes  
Permitted: Yes  
Wet space: No  
Addition: No  
Conversion: No



11723 Rolling Pine Lane, Bayonet Point, Port Richey, Pasco  
County, Florida, United States, 34668

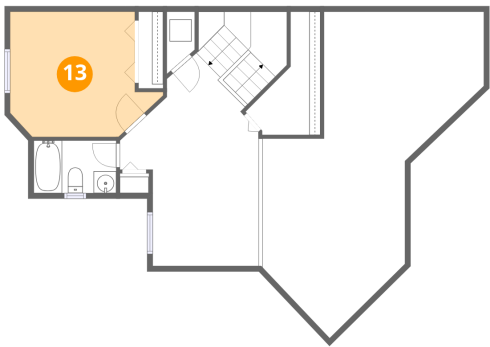
12 Floor 1 - Dining Area



Dimensions: 12'5" x 15'7"  
Area: 214 sq. ft  
Counted as living area: Yes

Heated: Yes  
Finished: Yes  
Enclosed: Yes  
Contiguous: Yes  
Permitted: Yes  
Wet space: No  
Addition: No  
Conversion: No

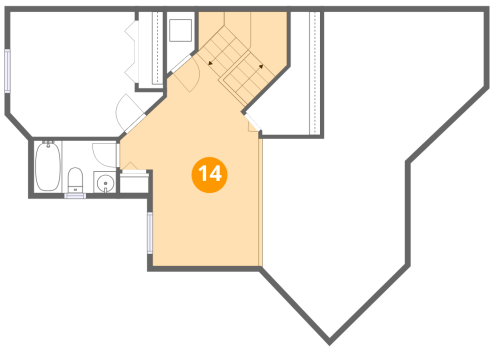
13 Floor 2 - Bedroom



Dimensions: 13'11" x 11'5"  
Area: 130 sq. ft  
Counted as living area: Yes

Heated: Yes  
Finished: Yes  
Enclosed: Yes  
Contiguous: Yes  
Permitted: Yes  
Wet space: No  
Addition: No  
Conversion: No

14 Floor 2 - Sitting Room



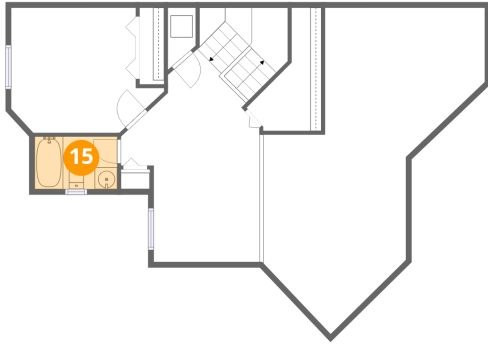
Dimensions: 12'7" x 19'0"  
Area: 228 sq. ft  
Counted as living area: Yes

Heated: Yes  
Finished: Yes  
Enclosed: Yes  
Contiguous: Yes  
Permitted: Yes  
Wet space: No  
Addition: No  
Conversion: No

## Home data report

11723 Rolling Pine Lane, Bayonet Point, Port Richey, Pasco  
County, Florida, United States, 34668

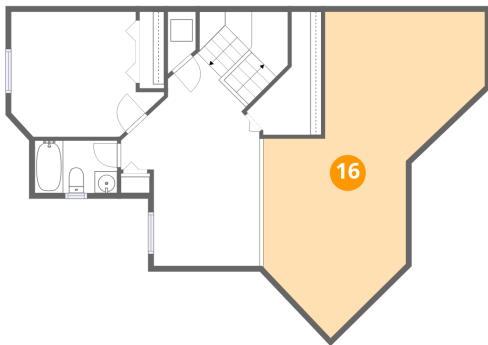
### 15 Floor 2 - Bath



Dimensions: 7'6" x 4'9"  
Area: 36 sq. ft  
Counted as living area: Yes

Heated: Yes  
Finished: Yes  
Enclosed: Yes  
Contiguous: Yes  
Permitted: Yes  
Wet space: Yes  
Addition: No  
Conversion: No

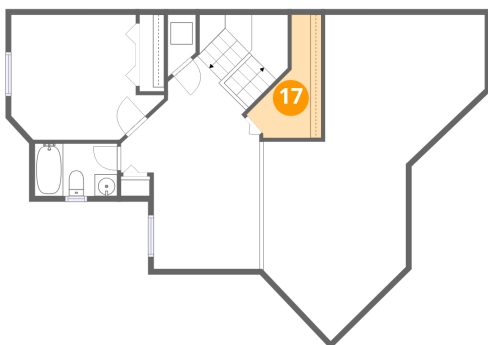
### 16 Floor 2 - Open To Below



Dimensions: 13'0" x 29'8"  
Area: 351 sq. ft  
Counted as living area: No

Heated: No  
Finished: No  
Enclosed: No  
Contiguous: Yes  
Permitted: No  
Wet space: No  
Addition: No  
Conversion: No

### 17 Floor 2 - W.I.C.



Dimensions: 6'9" x 11'3"  
Area: 46 sq. ft  
Counted as living area: Yes

Heated: Yes  
Finished: Yes  
Enclosed: Yes  
Contiguous: Yes  
Permitted: Yes  
Wet space: No  
Addition: No  
Conversion: No