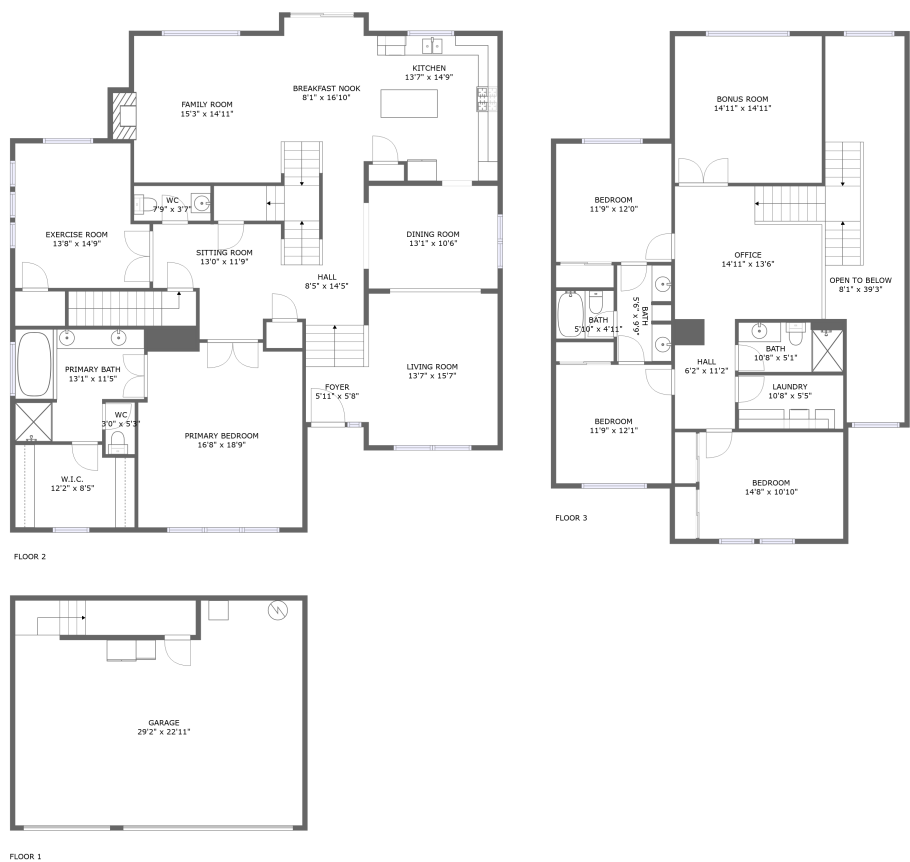


Home report

3728 Huntsman Way, Forest Grove, Washington County, Oregon,
United States, 97116



Total Area: 3455 sq. ft
Below Ground: 0 sq. ft, Floor 2: 2164 sq. ft, Floor 3: 1291 sq. ft
Excluded: Garage 659 sq. ft, Open to below 245 sq. ft, Walls: 254 sq. ft

Property summary

 **3** Floors

 **4** Bedrooms

 **3** Bathrooms

Home report

**3728 Huntsman Way, Forest Grove, Washington County, Oregon,
United States, 97116**



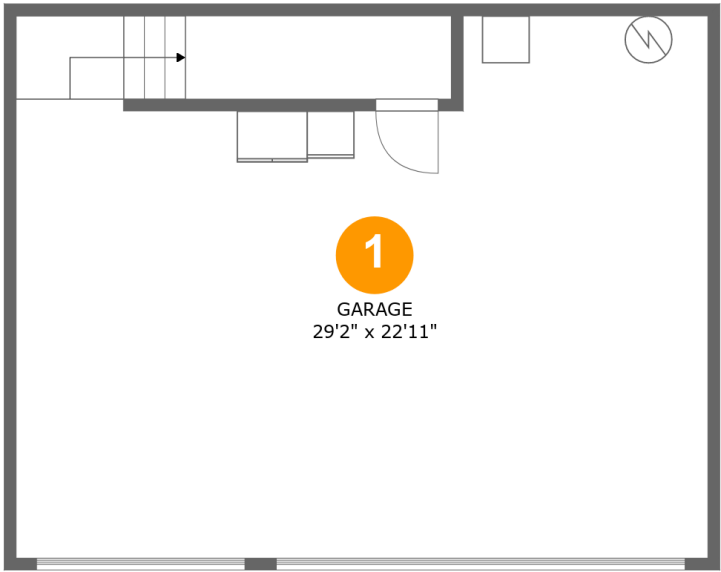
1
Half baths



1
Garages

Home report

3728 Huntsman Way, Forest Grove, Washington County, Oregon,
United States, 97116



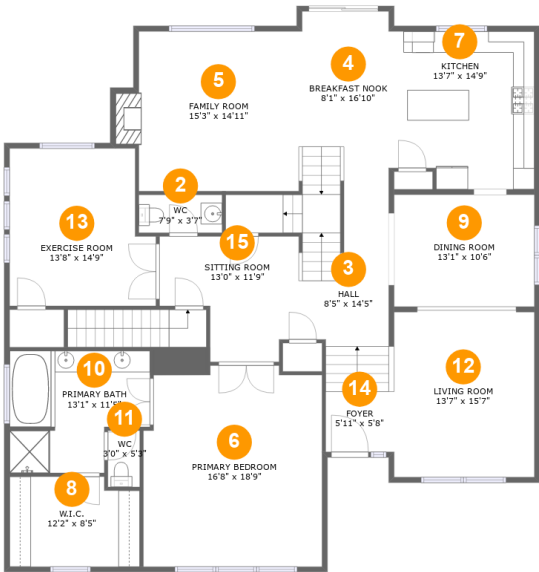
Room dimensions

Floor 1 Below ground Total:0sqft Excluded: 659sqft

#		Max Dimensions	sqft	Included
1	Garage	29'2" x 22'11"	659 sq. ft	No

Home report

3728 Huntsman Way, Forest Grove, Washington County, Oregon,
United States, 97116



Room dimensions

Floor 2 Total:2164sqft Excluded: 0sqft

#		Max Dimensions	sqft	Included
2	WC	7'9" x 3'7"	28 sq. ft	Yes
3	Hall	8'5" x 14'5"	170 sq. ft	Yes
4	Breakfast Nook	8'1" x 16'10"	133 sq. ft	Yes
5	Family Room	15'3" x 14'11"	238 sq. ft	Yes
6	Primary Bedroom	16'8" x 18'9"	300 sq. ft	Yes
7	Kitchen	13'7" x 14'9"	192 sq. ft	Yes
8	W.I.C.	12'2" x 8'5"	98 sq. ft	Yes
9	Dining Room	13'1" x 10'6"	137 sq. ft	Yes
10	Primary Bath	13'1" x 11'5"	130 sq. ft	Yes
11	WC	3'0" x 5'3"	16 sq. ft	Yes
12	Living Room	13'7" x 15'7"	212 sq. ft	Yes

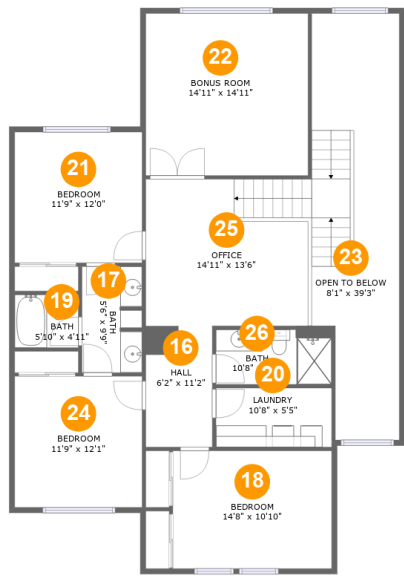
Home report

3728 Huntsman Way, Forest Grove, Washington County, Oregon,
United States, 97116

#		Max Dimensions	sqft	Included
13	Exercise Room	13'8" x 14'9"	185 sq. ft	Yes
14	Foyer	5'11" x 5'8"	33 sq. ft	Yes
15	Sitting Room	13'0" x 11'9"	124 sq. ft	Yes

Home report

3728 Huntsman Way, Forest Grove, Washington County, Oregon,
United States, 97116

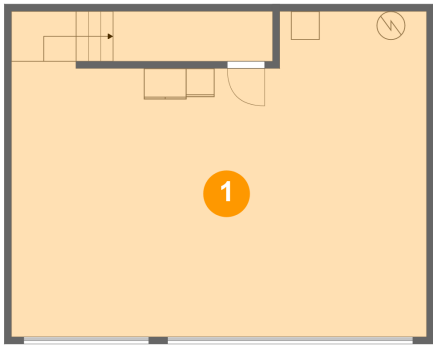


Room dimensions

Floor 3 Total:1291sqft Excluded: 245sqft

#		Max Dimensions	sqft	Included
16	Hall	6'2" x 11'2"	68 sq. ft	Yes
17	Bath	5'6" x 9'9"	53 sq. ft	Yes
18	Bedroom	14'8" x 10'10"	159 sq. ft	Yes
19	Bath	5'10" x 4'11"	29 sq. ft	Yes
20	Laundry	10'8" x 5'5"	58 sq. ft	Yes
21	Bedroom	11'9" x 12'0"	141 sq. ft	Yes
22	Bonus Room	14'11" x 14'11"	223 sq. ft	Yes
23	Open To Below	8'1" x 39'3"	245 sq. ft	No
24	Bedroom	11'9" x 12'1"	142 sq. ft	Yes
25	Office	14'11" x 13'6"	255 sq. ft	Yes
26	Bath	10'8" x 5'1"	54 sq. ft	Yes

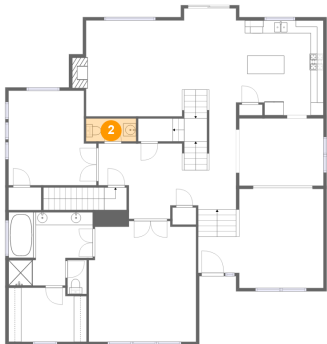
1 Floor 1 - Garage



Max Dimensions: 29'2" x 22'11"
Calculated Area: 659 sq. ft
Included: No

Heated: No
Finished: No
Enclosed: Yes
Contiguous: Yes
Permitted: Yes
Wet space: No
Addition: No
Conversion: No

2 Floor 2 - WC

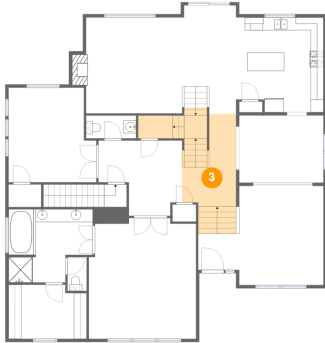


Max Dimensions: 7'9" x 3'7"
Calculated Area: 28 sq. ft
Included: Yes

Heated: Yes
Finished: Yes
Enclosed: Yes
Contiguous: Yes
Permitted: Yes
Wet space: Yes
Addition: No
Conversion: No

3728 Huntsman Way, Forest Grove, Washington County, Oregon,
United States, 97116

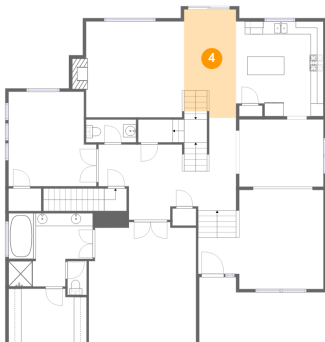
3 Floor 2 - Hall



Max Dimensions: 8'5" x 14'5"
Calculated Area: 170 sq. ft
Included: Yes

Heated: Yes
Finished: Yes
Enclosed: Yes
Contiguous: Yes
Permitted: Yes
Wet space: No
Addition: No
Conversion: No

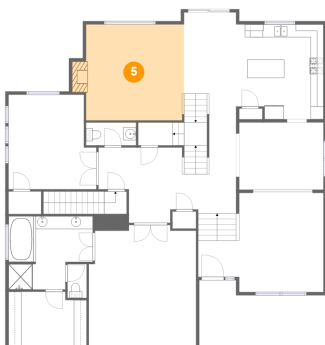
4 Floor 2 - Breakfast Nook



Max Dimensions: 8'1" x 16'10"
Calculated Area: 133 sq. ft
Included: Yes

Heated: Yes
Finished: Yes
Enclosed: Yes
Contiguous: Yes
Permitted: Yes
Wet space: No
Addition: No
Conversion: No

5 Floor 2 - Family Room

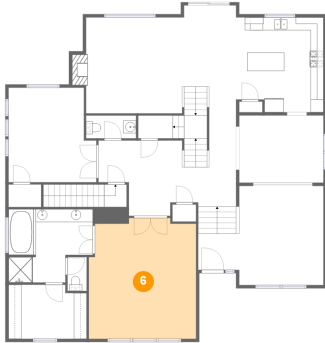


Max Dimensions: 15'3" x 14'11"
Calculated Area: 238 sq. ft
Included: Yes

Heated: Yes
Finished: Yes
Enclosed: Yes
Contiguous: Yes
Permitted: Yes
Wet space: No
Addition: No
Conversion: No

3728 Huntsman Way, Forest Grove, Washington County, Oregon,
United States, 97116

6 Floor 2 - Primary Bedroom



Max Dimensions: 16'8" x 18'9"
Calculated Area: 300 sq. ft
Included: Yes

Heated: Yes
Finished: Yes
Enclosed: Yes
Contiguous: Yes
Permitted: Yes
Wet space: No
Addition: No
Conversion: No

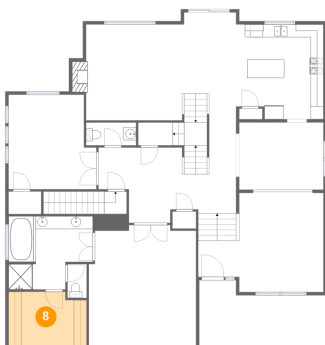
7 Floor 2 - Kitchen



Max Dimensions: 13'7" x 14'9"
Calculated Area: 192 sq. ft
Included: Yes

Heated: Yes
Finished: Yes
Enclosed: Yes
Contiguous: Yes
Permitted: Yes
Wet space: No
Addition: No
Conversion: No

8 Floor 2 - W.I.C.

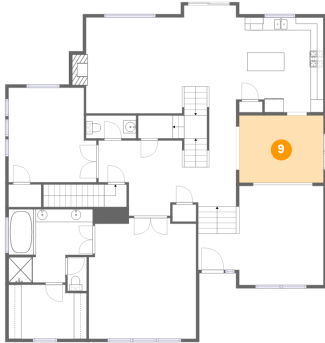


Max Dimensions: 12'2" x 8'5"
Calculated Area: 98 sq. ft
Included: Yes

Heated: Yes
Finished: Yes
Enclosed: Yes
Contiguous: Yes
Permitted: Yes
Wet space: No
Addition: No
Conversion: No

3728 Huntsman Way, Forest Grove, Washington County, Oregon,
United States, 97116

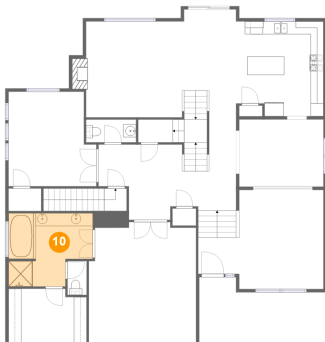
9 Floor 2 - Dining Room



Max Dimensions: 13'1" x 10'6"
Calculated Area: 137 sq. ft
Included: Yes

Heated: Yes
Finished: Yes
Enclosed: Yes
Contiguous: Yes
Permitted: Yes
Wet space: No
Addition: No
Conversion: No

10 Floor 2 - Primary Bath



Max Dimensions: 13'1" x 11'5"
Calculated Area: 130 sq. ft
Included: Yes

Heated: Yes
Finished: Yes
Enclosed: Yes
Contiguous: Yes
Permitted: Yes
Wet space: Yes
Addition: No
Conversion: No

11 Floor 2 - WC

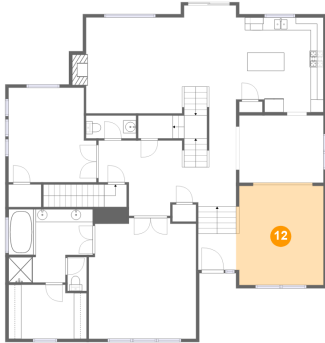


Max Dimensions: 3'0" x 5'3"
Calculated Area: 16 sq. ft
Included: Yes

Heated: Yes
Finished: Yes
Enclosed: Yes
Contiguous: Yes
Permitted: Yes
Wet space: Yes
Addition: No
Conversion: No

3728 Huntsman Way, Forest Grove, Washington County, Oregon,
United States, 97116

12 Floor 2 - Living Room



Max Dimensions: 13'7" x 15'7"
Calculated Area: 212 sq. ft
Included: Yes

Heated: Yes
Finished: Yes
Enclosed: Yes
Contiguous: Yes
Permitted: Yes
Wet space: No
Addition: No
Conversion: No

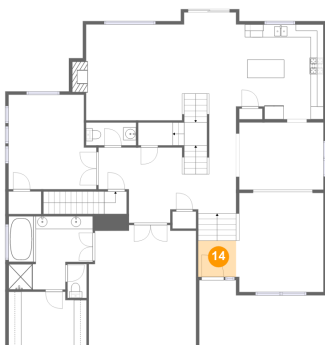
13 Floor 2 - Exercise Room



Max Dimensions: 13'8" x 14'9"
Calculated Area: 185 sq. ft
Included: Yes

Heated: Yes
Finished: Yes
Enclosed: Yes
Contiguous: Yes
Permitted: Yes
Wet space: No
Addition: No
Conversion: No

14 Floor 2 - Foyer

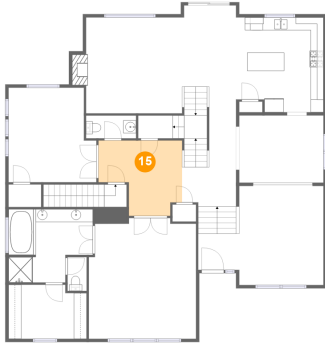


Max Dimensions: 5'11" x 5'8"
Calculated Area: 33 sq. ft
Included: Yes

Heated: Yes
Finished: Yes
Enclosed: Yes
Contiguous: Yes
Permitted: Yes
Wet space: No
Addition: No
Conversion: No

3728 Huntsman Way, Forest Grove, Washington County, Oregon,
United States, 97116

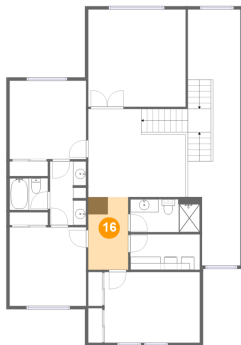
15 Floor 2 - Sitting Room



Max Dimensions: 13'0" x 11'9"
Calculated Area: 124 sq. ft
Included: Yes

Heated: Yes
Finished: Yes
Enclosed: Yes
Contiguous: Yes
Permitted: Yes
Wet space: No
Addition: No
Conversion: No

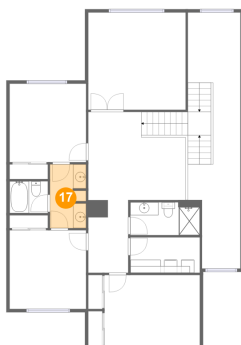
16 Floor 3 - Hall



Max Dimensions: 6'2" x 11'2"
Calculated Area: 68 sq. ft
Included: Yes

Heated: Yes
Finished: Yes
Enclosed: Yes
Contiguous: Yes
Permitted: Yes
Wet space: No
Addition: No
Conversion: No

17 Floor 3 - Bath



Max Dimensions: 5'6" x 9'9"
Calculated Area: 53 sq. ft
Included: Yes

Heated: Yes
Finished: Yes
Enclosed: Yes
Contiguous: Yes
Permitted: Yes
Wet space: Yes
Addition: No
Conversion: No

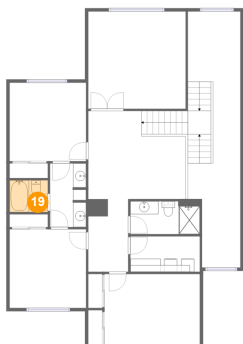
18 Floor 3 - Bedroom



Max Dimensions: 14'8" x 10'10"
Calculated Area: 159 sq. ft
Included: Yes

Heated: Yes
Finished: Yes
Enclosed: Yes
Contiguous: Yes
Permitted: Yes
Wet space: No
Addition: No
Conversion: No

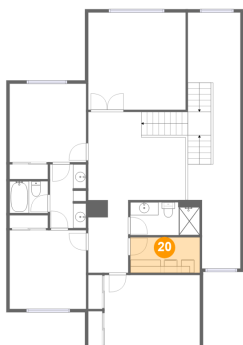
19 Floor 3 - Bath



Max Dimensions: 5'10" x 4'11"
Calculated Area: 29 sq. ft
Included: Yes

Heated: Yes
Finished: Yes
Enclosed: Yes
Contiguous: Yes
Permitted: Yes
Wet space: Yes
Addition: No
Conversion: No

20 Floor 3 - Laundry



Max Dimensions: 10'8" x 5'5"
Calculated Area: 58 sq. ft
Included: Yes

Heated: Yes
Finished: Yes
Enclosed: Yes
Contiguous: Yes
Permitted: Yes
Wet space: No
Addition: No
Conversion: No

3728 Huntsman Way, Forest Grove, Washington County, Oregon,
United States, 97116

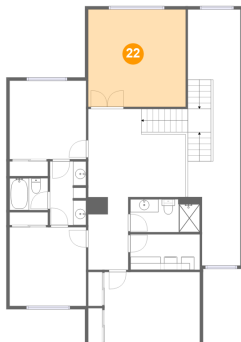
21 Floor 3 - Bedroom



Max Dimensions: 11'9" x 12'0"
Calculated Area: 141 sq. ft
Included: Yes

Heated: Yes
Finished: Yes
Enclosed: Yes
Contiguous: Yes
Permitted: Yes
Wet space: No
Addition: No
Conversion: No

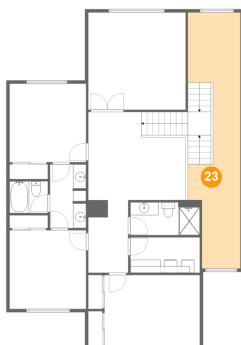
22 Floor 3 - Bonus Room



Max Dimensions: 14'11" x 14'11"
Calculated Area: 223 sq. ft
Included: Yes

Heated: Yes
Finished: Yes
Enclosed: Yes
Contiguous: Yes
Permitted: Yes
Wet space: No
Addition: No
Conversion: No

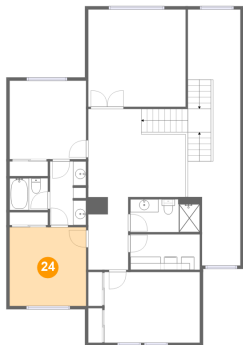
23 Floor 3 - Open To Below



Max Dimensions: 8'1" x 39'3"
Calculated Area: 245 sq. ft
Included: No

Heated: No
Finished: No
Enclosed: No
Contiguous: Yes
Permitted: No
Wet space: No
Addition: No
Conversion: No

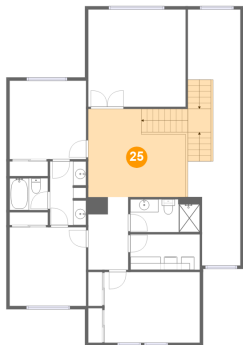
24 Floor 3 - Bedroom



Max Dimensions: 11'9" x 12'1"
Calculated Area: 142 sq. ft
Included: Yes

Heated: Yes
Finished: Yes
Enclosed: Yes
Contiguous: Yes
Permitted: Yes
Wet space: No
Addition: No
Conversion: No

25 Floor 3 - Office



Max Dimensions: 14'11" x 13'6"
Calculated Area: 255 sq. ft
Included: Yes

Heated: Yes
Finished: Yes
Enclosed: Yes
Contiguous: Yes
Permitted: Yes
Wet space: No
Addition: No
Conversion: No

26 Floor 3 - Bath



Max Dimensions: 10'8" x 5'1"
Calculated Area: 54 sq. ft
Included: Yes

Heated: Yes
Finished: Yes
Enclosed: Yes
Contiguous: Yes
Permitted: Yes
Wet space: Yes
Addition: No
Conversion: No