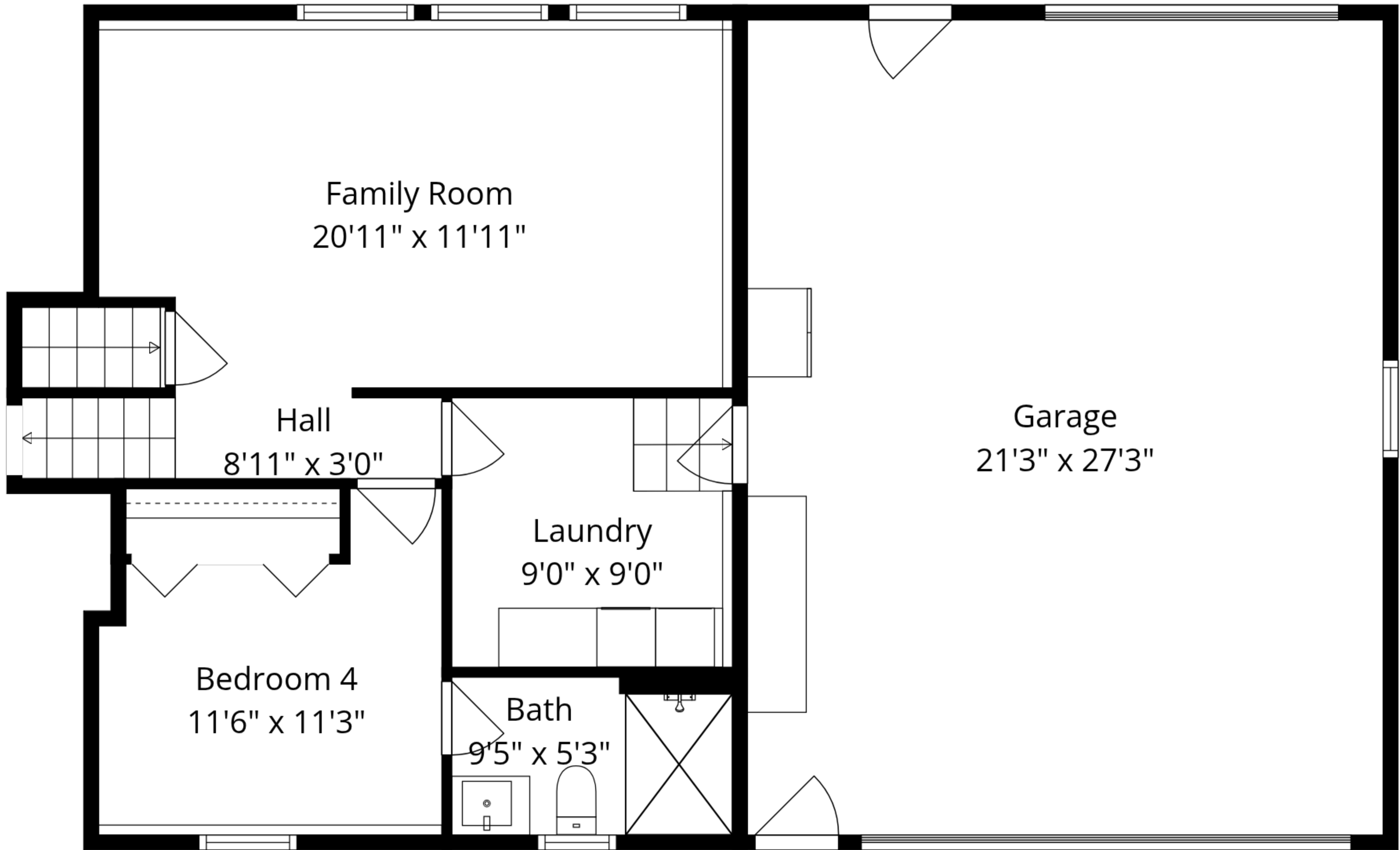


Basement
21'2" x 26'5"

Total GLA: 2041 sq. ft | Total: 3275 sq. ft
Basement: (Excluded areas 618 sq. ft)
Lower floor: 642 sq. ft (Excluded areas 616 sq. ft)
Main floor: 644 sq. ft
Upper floor: 755 sq. ft

Sizes And Dimensions Are Approximate. Actual May Vary.



Total GLA: 2041 sq. ft | Total: 3275 sq. ft

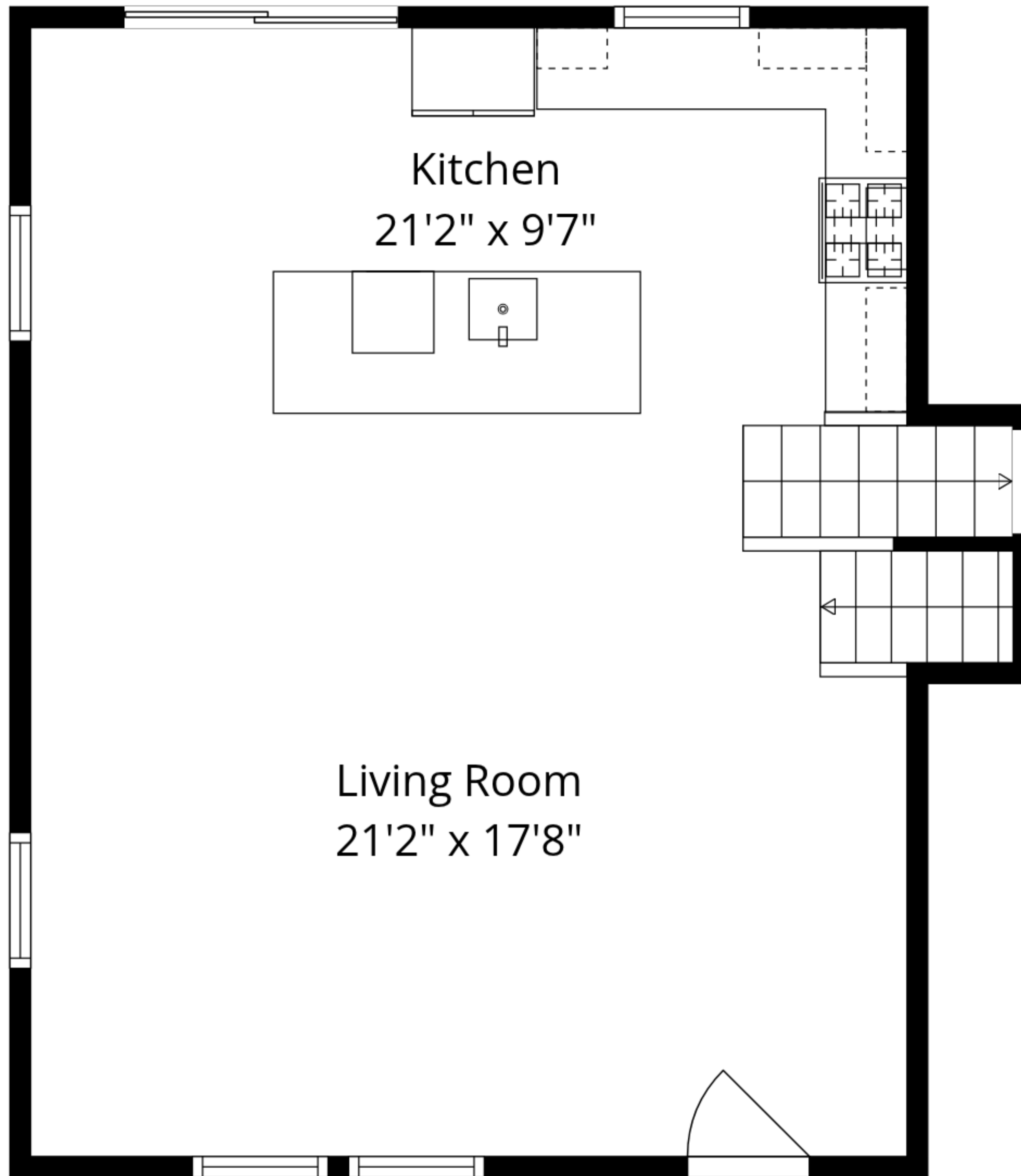
Basement: (Excluded areas 618 sq. ft)

Lower floor: 642 sq. ft (Excluded areas 616 sq. ft)

Main floor: 644 sq. ft

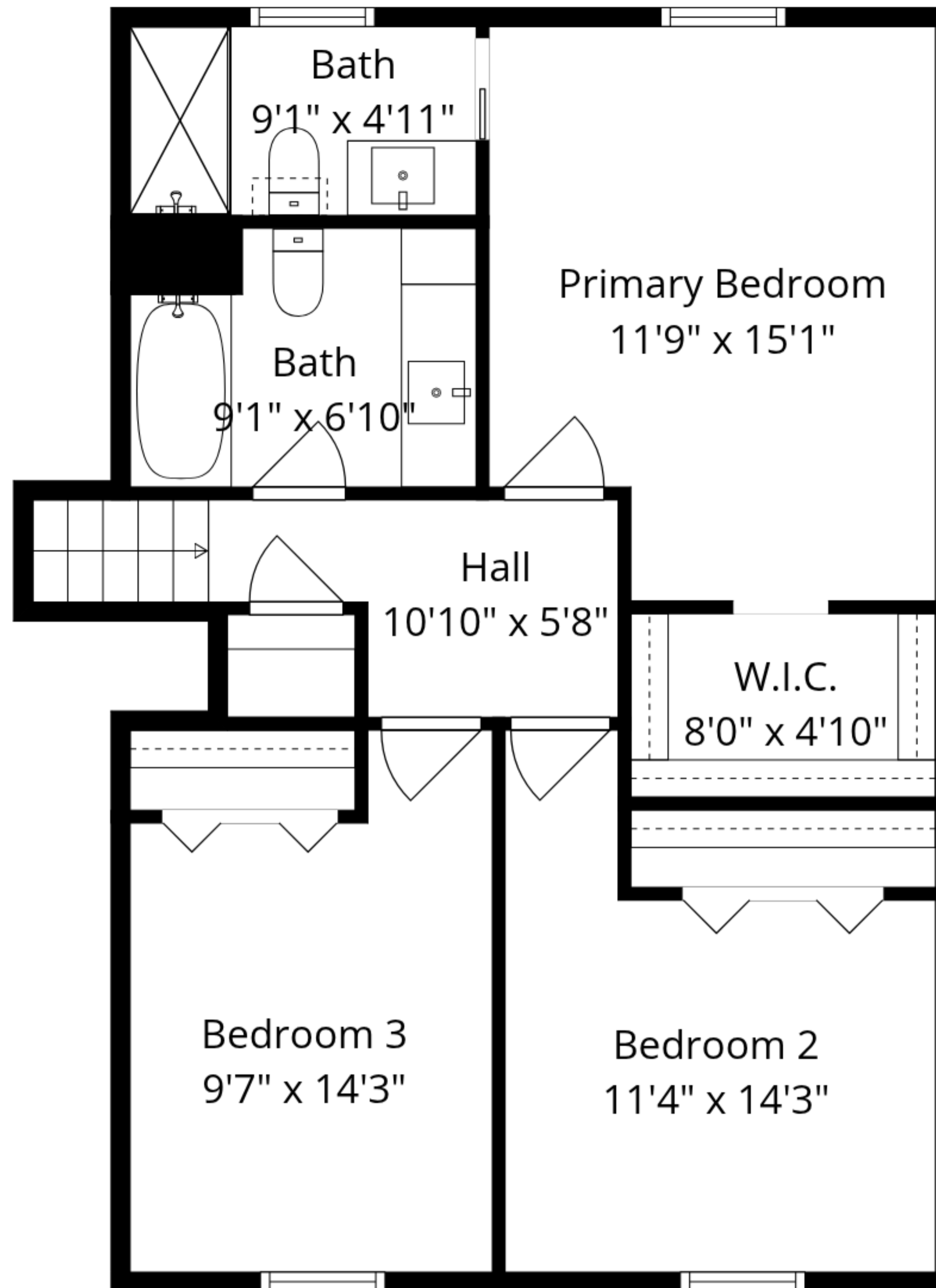
Upper floor: 755 sq. ft

Sizes And Dimensions Are Approximate. Actual May Vary.



Total GLA: 2041 sq. ft | Total: 3275 sq. ft
Basement: (Excluded areas 618 sq. ft)
Lower floor: 642 sq. ft (Excluded areas 616 sq. ft)
Main floor: 644 sq. ft
Upper floor: 755 sq. ft

Sizes And Dimensions Are Approximate. Actual May Vary.



Total GLA: 2041 sq. ft | Total: 3275 sq. ft

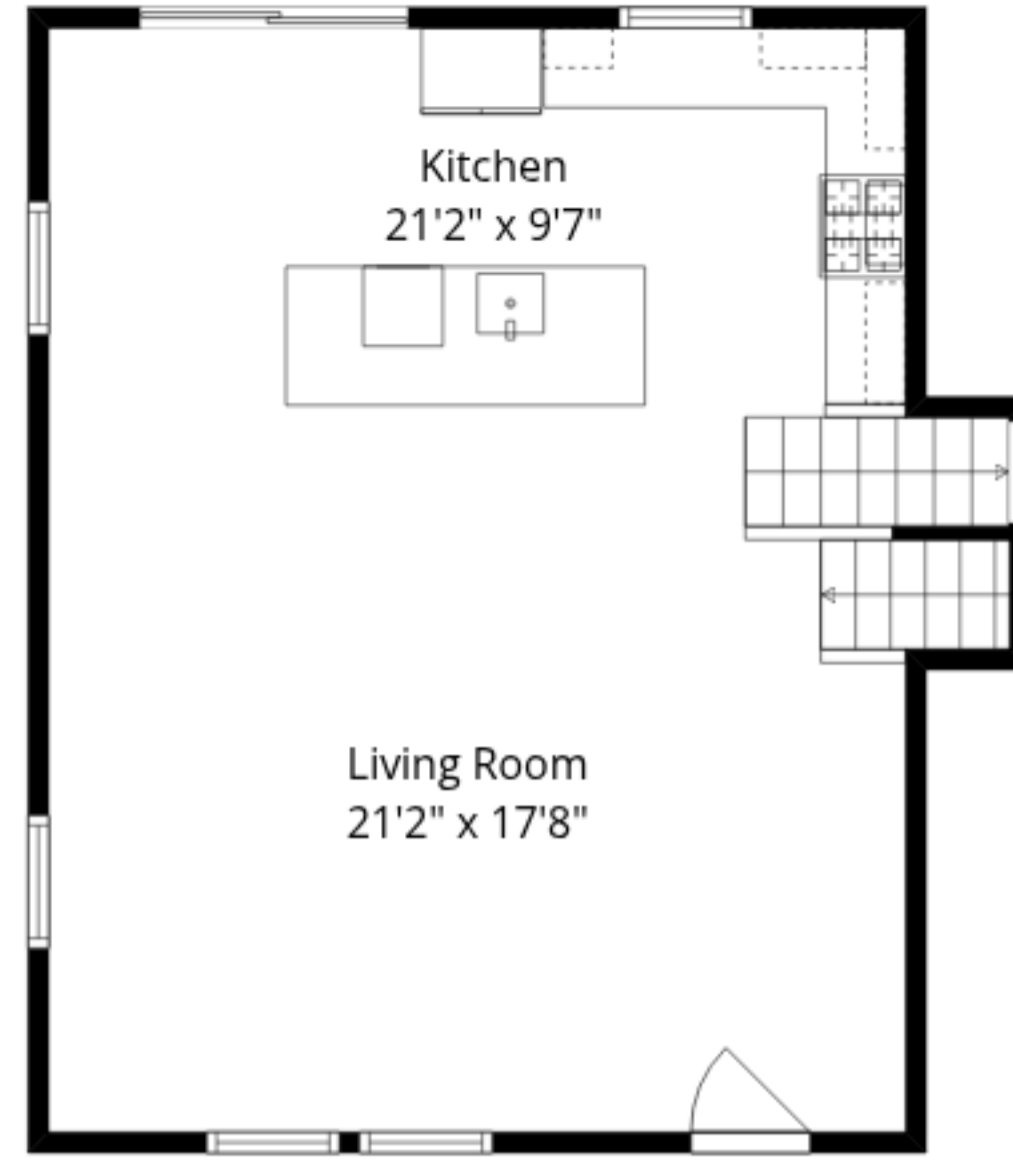
Basement: (Excluded areas 618 sq. ft)

Lower floor: 642 sq. ft (Excluded areas 616 sq. ft)

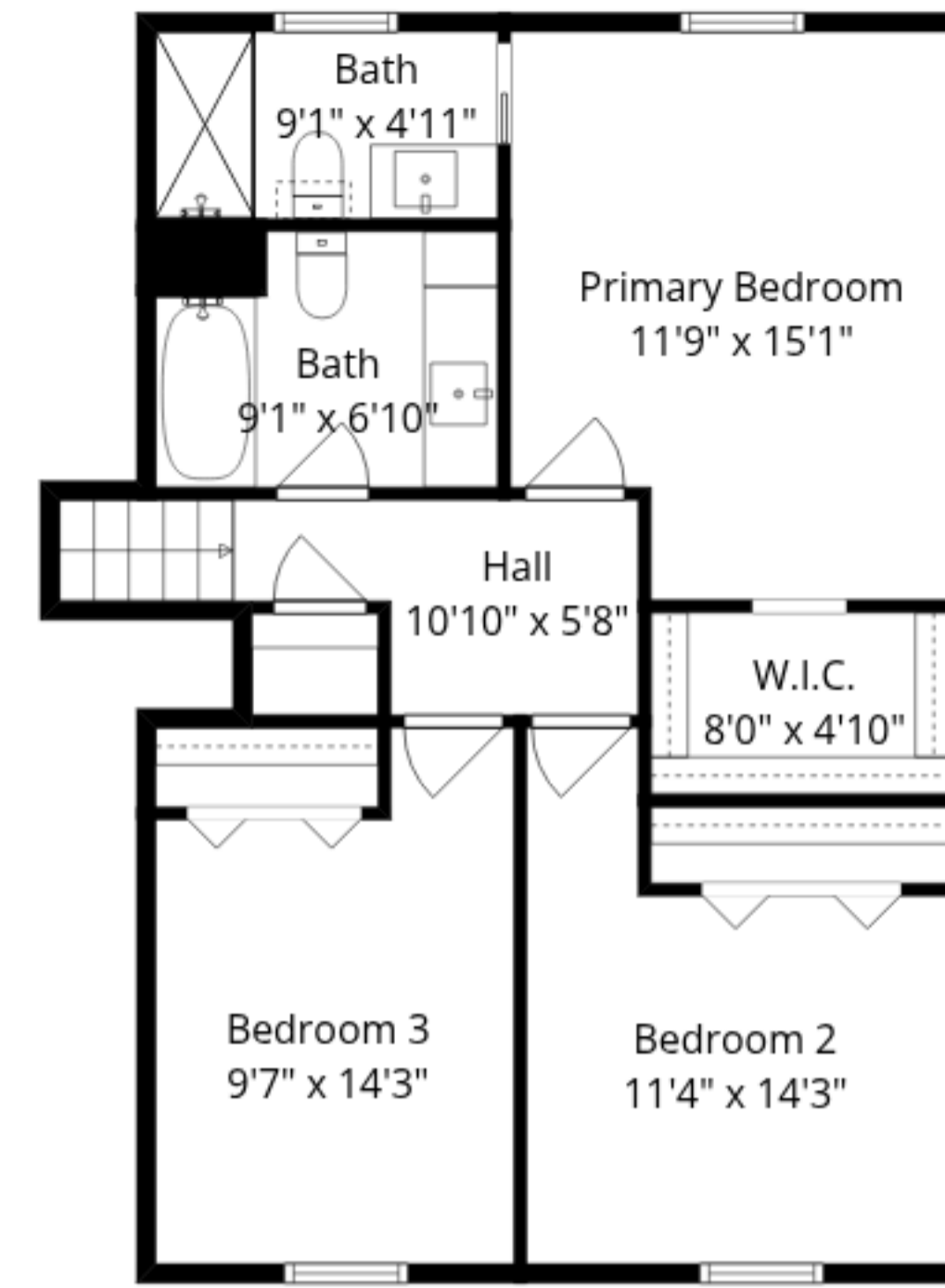
Main floor: 644 sq. ft

Upper floor: 755 sq. ft

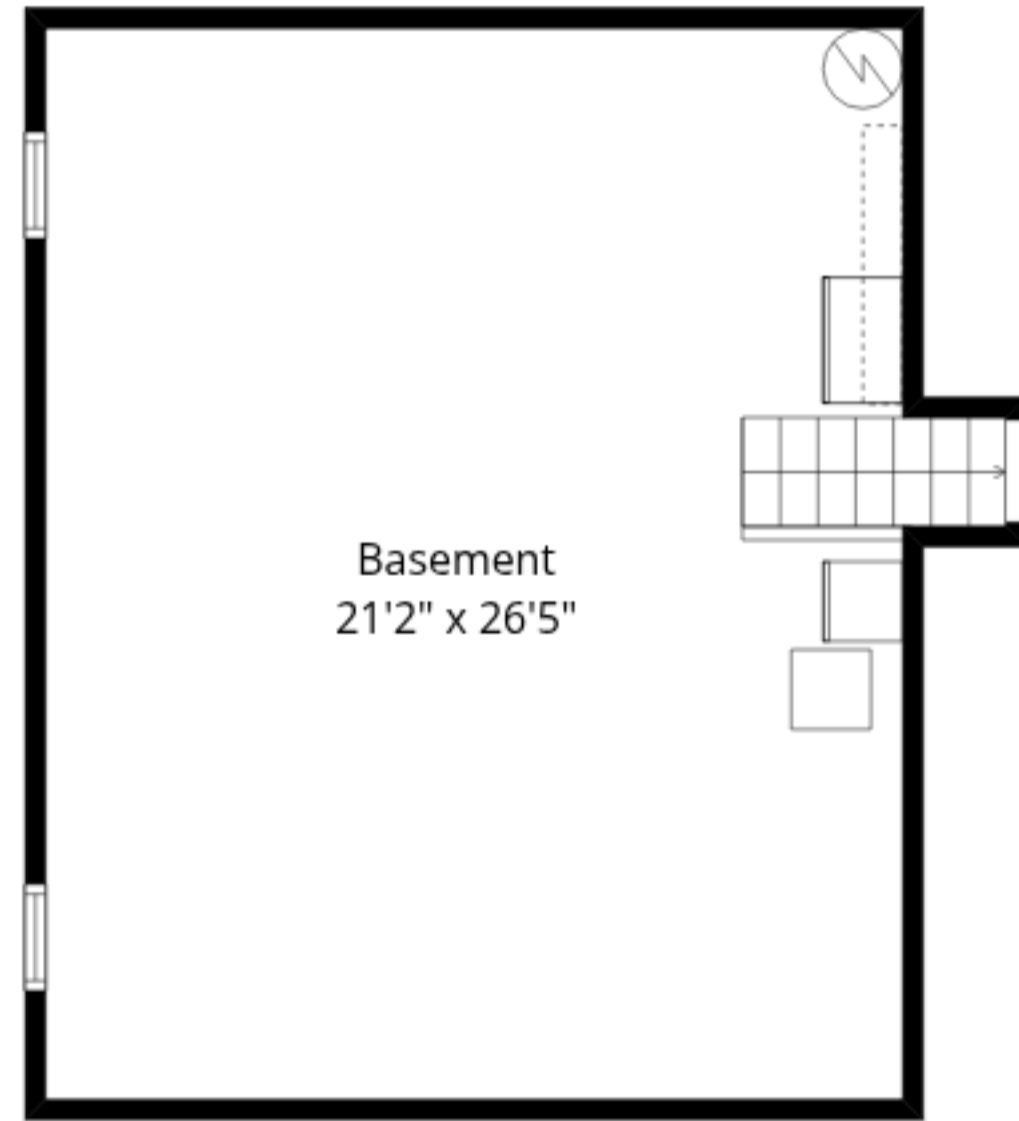
Sizes And Dimensions Are Approximate. Actual May Vary.



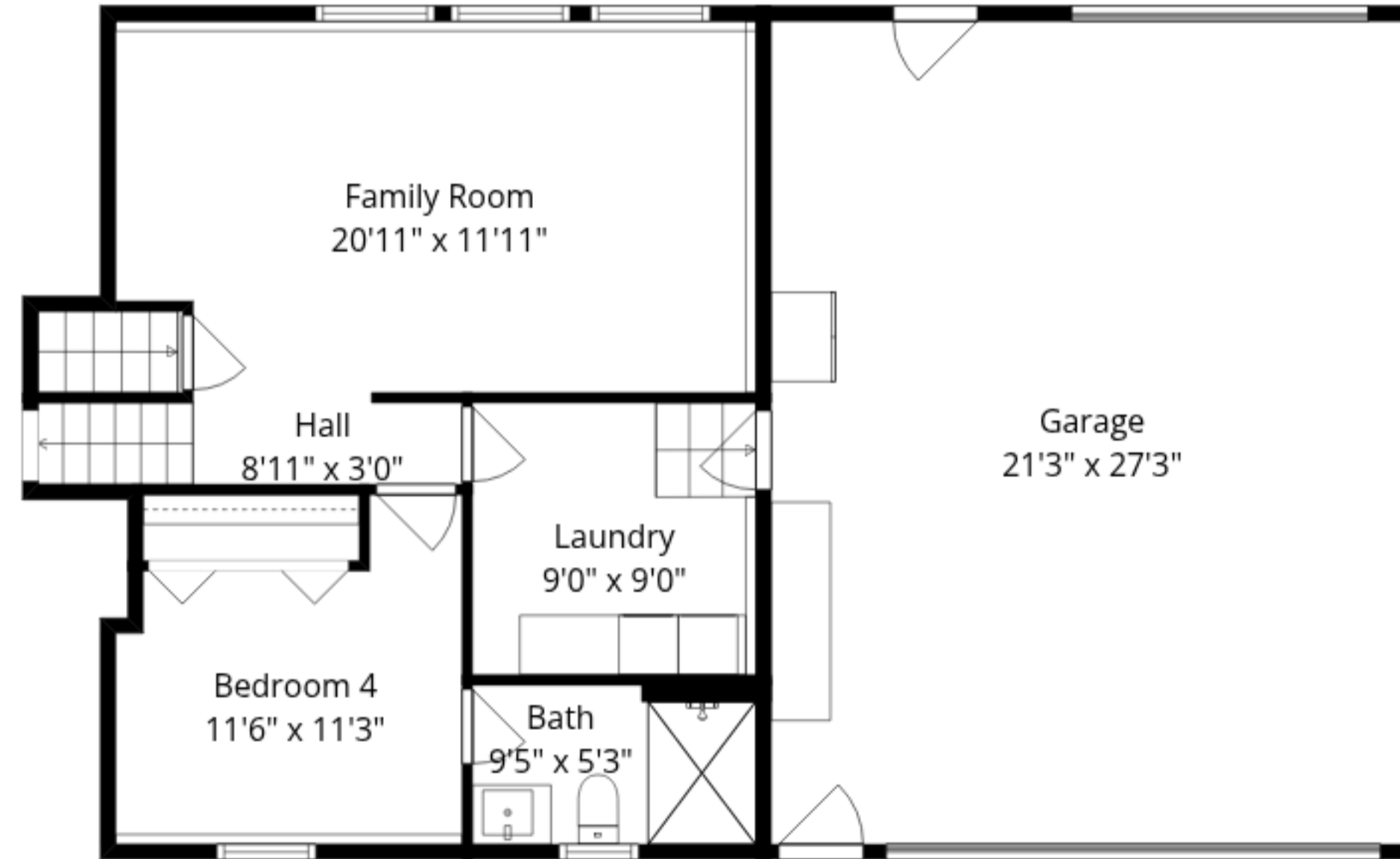
Main Floor



Upper Floor



Basement



Lower Floor

Total GLA: 2041 sq. ft | Total: 3275 sq. ft
 Basement: (Excluded areas 618 sq. ft)
 Lower floor: 642 sq. ft (Excluded areas 616 sq. ft)
 Main floor: 644 sq. ft
 Upper floor: 755 sq. ft

Sizes And Dimensions Are Approximate. Actual May Vary.