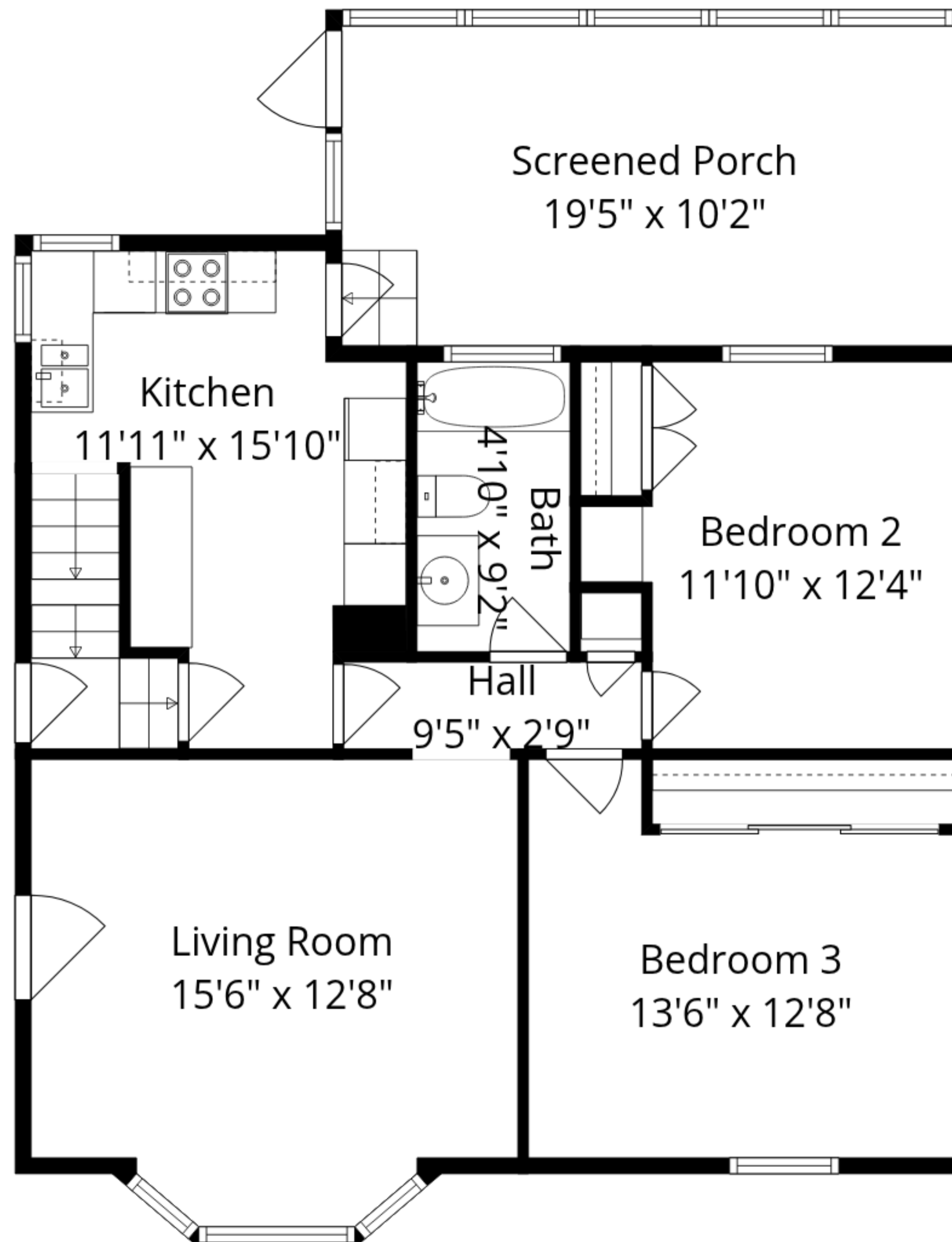


Basement
28'11" x 24'5"

Storage
8'7" x 9'5"

Total GLA: 1095 sq. ft | Total: 2361 sq. ft
Lower floor: (Excluded areas 796 sq. ft)
Main floor: 834 sq. ft (Excluded areas 234 sq. ft)
Upper floor: 261 sq. ft (Excluded areas 236 sq. ft)

Sizes And Dimensions Are Approximate. Actual May Vary.



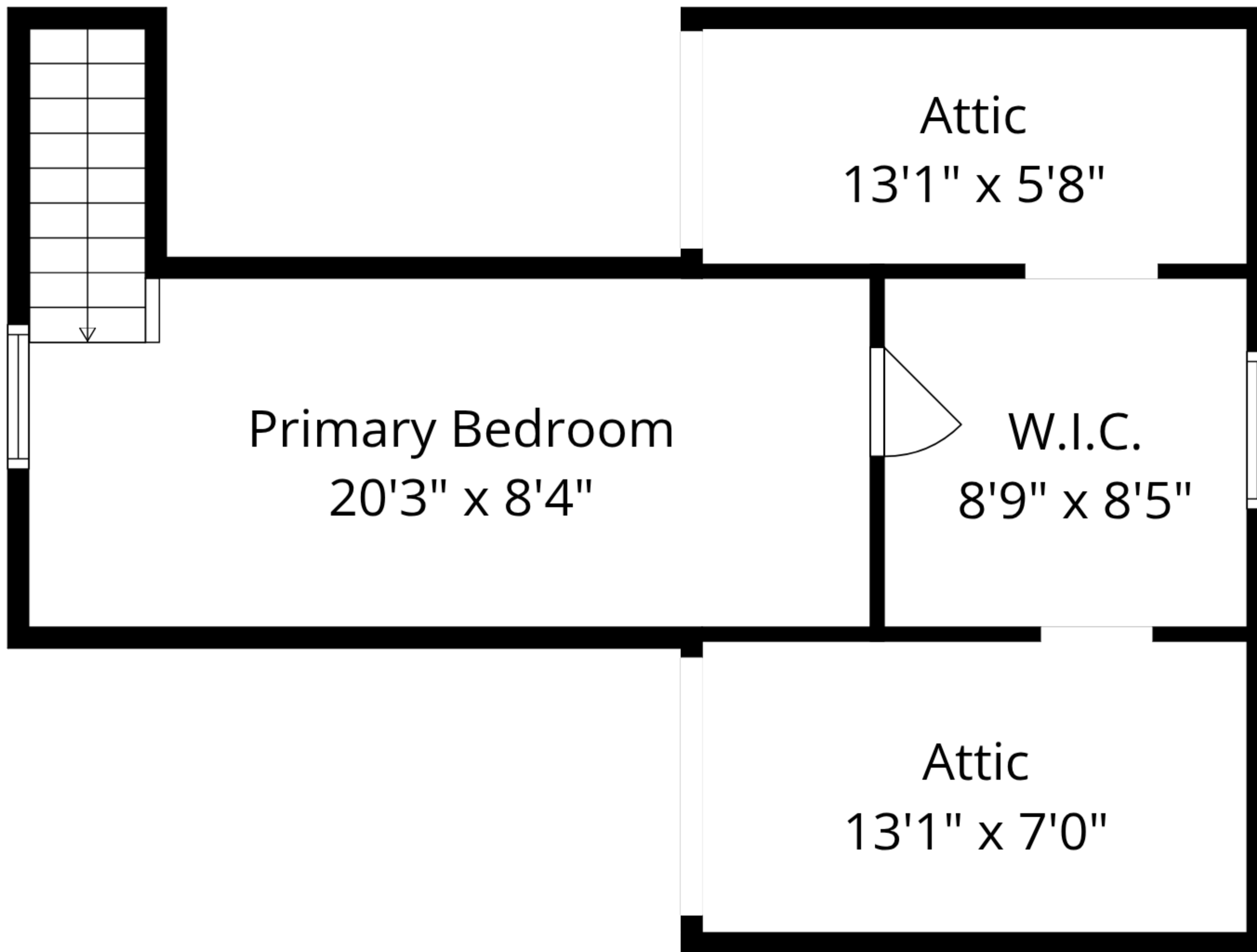
Total GLA: 1095 sq. ft | Total: 2361 sq. ft

Lower floor: (Excluded areas 796 sq. ft)

Main floor: 834 sq. ft (Excluded areas 234 sq. ft)

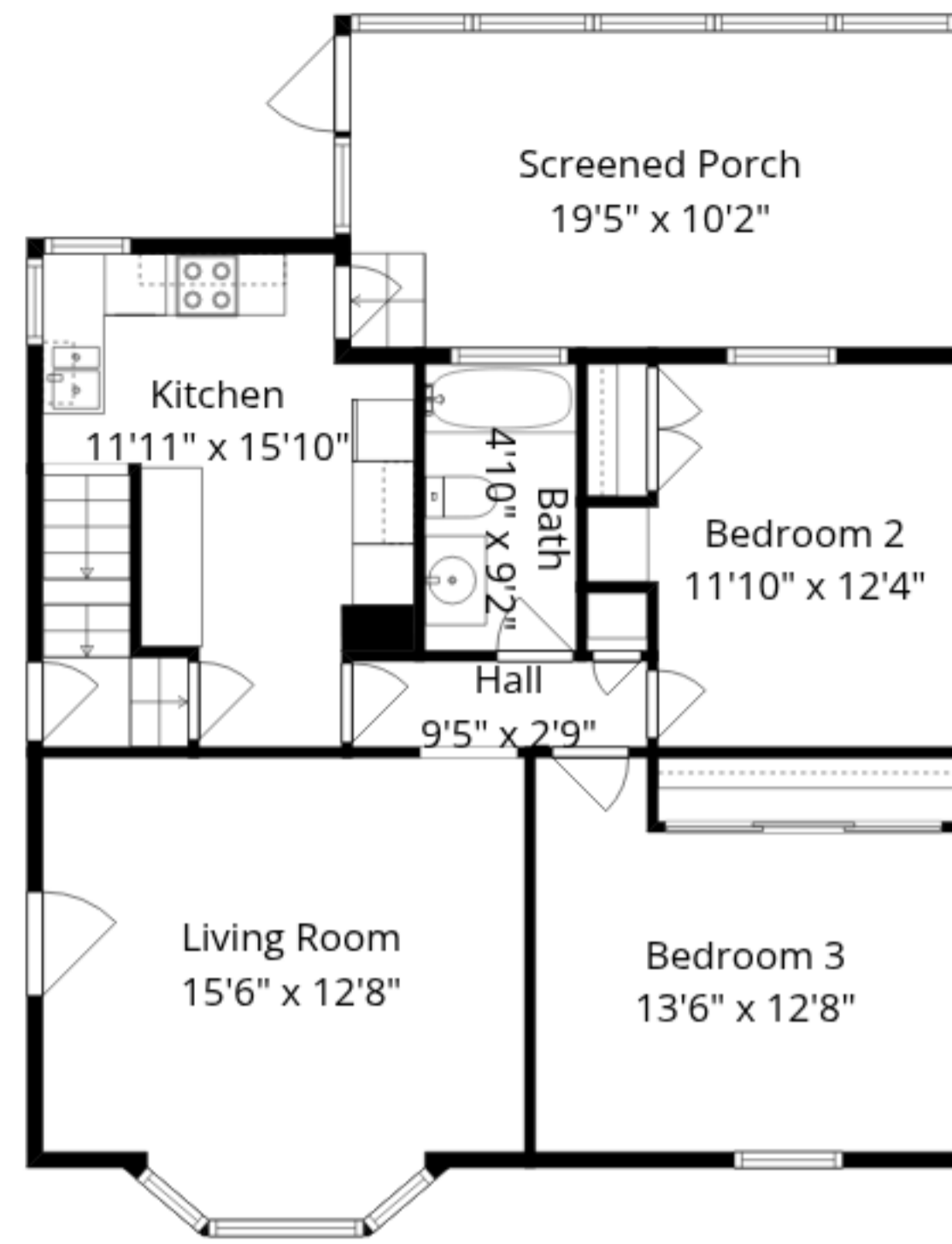
Upper floor: 261 sq. ft (Excluded areas 236 sq. ft)

Sizes And Dimensions Are Approximate. Actual May Vary.



Total GLA: 1095 sq. ft | Total: 2361 sq. ft
Lower floor: (Excluded areas 796 sq. ft)
Main floor: 834 sq. ft (Excluded areas 234 sq. ft)
Upper floor: 261 sq. ft (Excluded areas 236 sq. ft)

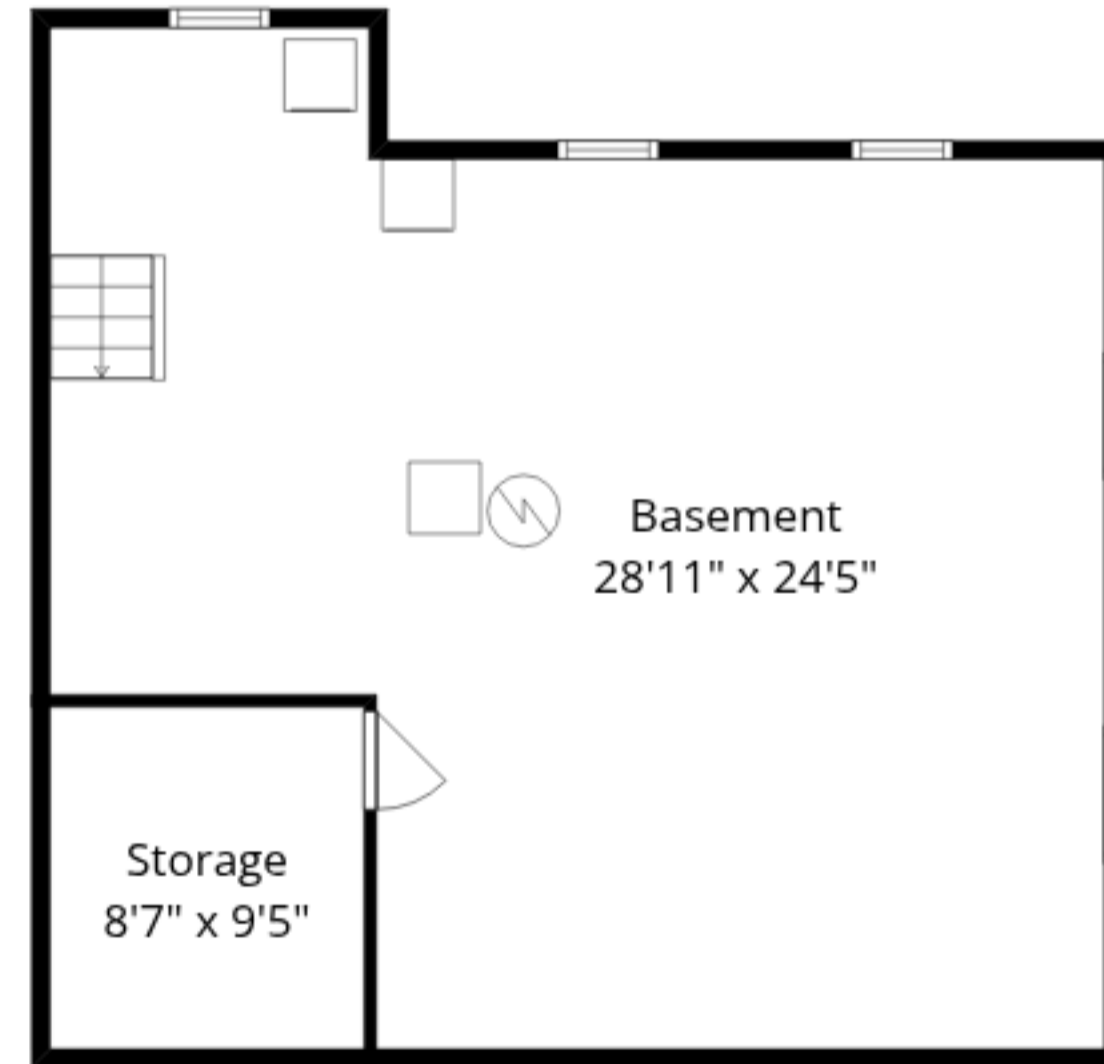
Sizes And Dimensions Are Approximate. Actual May Vary.



Main Floor



Upper Floor



Lower Floor

Total GLA: 1095 sq. ft | Total: 2361 sq. ft
 Lower floor: (Excluded areas 796 sq. ft)
 Main floor: 834 sq. ft (Excluded areas 234 sq. ft)
 Upper floor: 261 sq. ft (Excluded areas 236 sq. ft)

Sizes And Dimensions Are Approximate. Actual May Vary.