

## Home data report

# 4299 Wasilla-Fishhook Rd, Palmer, AK, US



**Total Area: 1597 sq. ft**

1st Floor: 544 sq. ft, 2nd Floor: 461 sq. ft, 3rd Floor: 592 sq. ft

Excluded: Fireplace 8 sq. ft, Garage 408 sq. ft, Porch 83 sq. ft, Deck 100 sq. ft, Walls: 173 sq. ft

## Property summary



**3**  
Floors



**4**  
Bedrooms

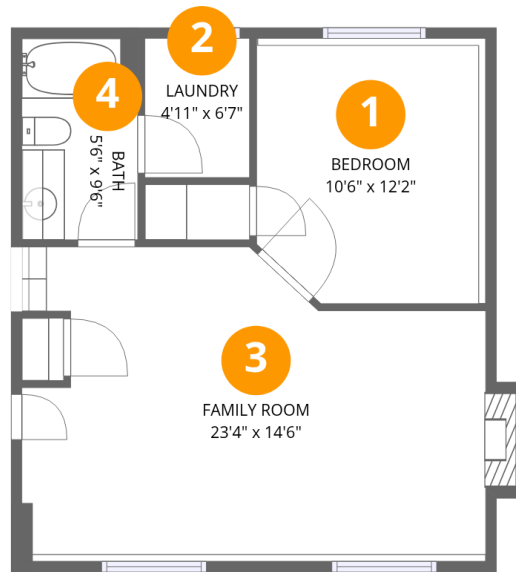


**3**  
Bathrooms



**1**  
Garages

# 4299 Wasilla-Fishhook Rd,Palmer,AK,US

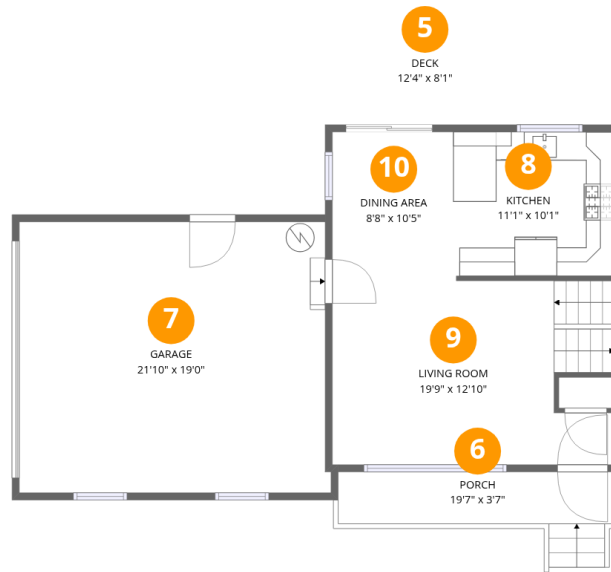


## Room dimensions

Floor 1

Total:544sqft Excluded: 8sqft

#		Dimensions	sqft	Counted as living area
1	Bedroom	10'6" x 12'2"	128 sq. ft	Yes
2	Laundry	4'11" x 6'7"	33 sq. ft	Yes
3	Family Room	23'4" x 14'6"	339 sq. ft	Yes
4	Bath	5'6" x 9'6"	52 sq. ft	Yes



## Room dimensions

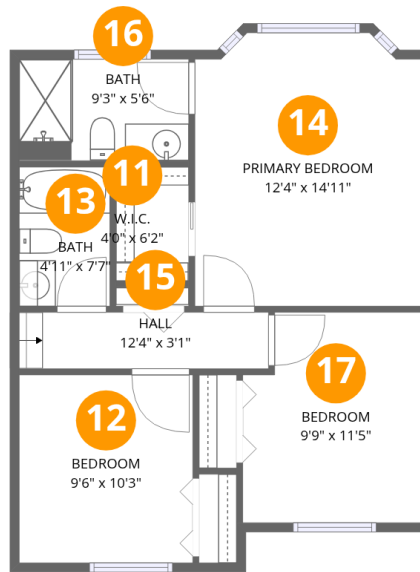
Floor 2

Total:461sqft

Excluded: 591sqft

#		Dimensions	sqft	Counted as living area
5	Deck	12'4" x 8'1"	100 sq. ft	No
6	Porch	19'7" x 3'7"	70 sq. ft	No
7	Garage	21'10" x 19'0"	415 sq. ft	No
8	Kitchen	11'1" x 10'1"	112 sq. ft	Yes
9	Living Room	19'9" x 12'10"	254 sq. ft	Yes
10	Dining Area	8'8" x 10'5"	91 sq. ft	Yes

# 4299 Wasilla-Fishhook Rd,Palmer,AK,US



## Room dimensions

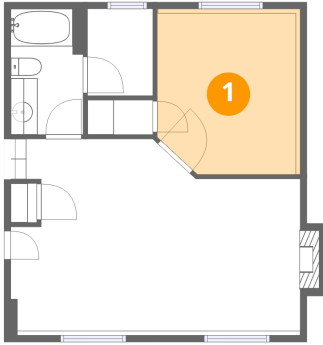
Floor 3

Total:592sqft

Excluded: 0sqft

#		Dimensions	sqft	Counted as living area
11	W.I.C.	4'0" x 6'2"	25 sq. ft	Yes
12	Bedroom	9'6" x 10'3"	97 sq. ft	Yes
13	Bath	4'11" x 7'7"	38 sq. ft	Yes
14	Primary Bedroom	12'4" x 14'11"	184 sq. ft	Yes
15	Hall	12'4" x 3'1"	38 sq. ft	Yes
16	Bath	9'3" x 5'6"	51 sq. ft	Yes
17	Bedroom	9'9" x 11'5"	111 sq. ft	Yes

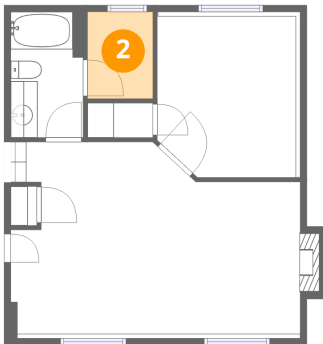
## 1 Floor 1 - Bedroom



Dimensions: 10'6" x 12'2"  
Area: 128 sq. ft  
Counted as living area: Yes

Heated: Yes  
Finished: Yes  
Enclosed: Yes  
Contiguous: Yes  
Permitted: Yes  
Wet space: No  
Addition: No  
Conversion: No

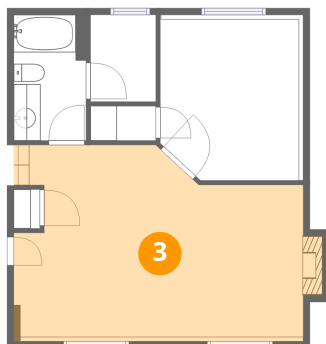
## 2 Floor 1 - Laundry



Dimensions: 4'11" x 6'7"  
Area: 33 sq. ft  
Counted as living area: Yes

Heated: Yes  
Finished: Yes  
Enclosed: Yes  
Contiguous: Yes  
Permitted: Yes  
Wet space: No  
Addition: No  
Conversion: No

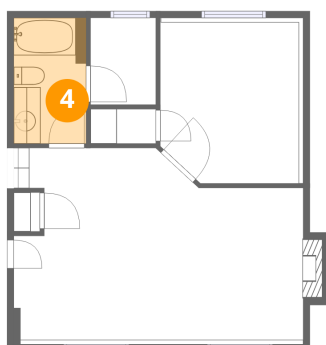
### 3 Floor 1 - Family Room



Dimensions: 23'4" x 14'6"  
Area: 339 sq. ft  
Counted as living area: Yes

Heated: Yes  
Finished: Yes  
Enclosed: Yes  
Contiguous: Yes  
Permitted: Yes  
Wet space: No  
Addition: No  
Conversion: No

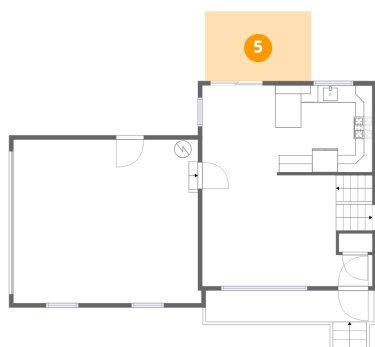
### 4 Floor 1 - Bath



Dimensions: 5'6" x 9'6"  
Area: 52 sq. ft  
Counted as living area: Yes

Heated: Yes  
Finished: Yes  
Enclosed: Yes  
Contiguous: Yes  
Permitted: Yes  
Wet space: Yes  
Addition: No  
Conversion: No

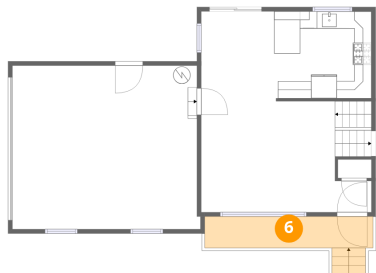
### 5 Floor 2 - Deck



Dimensions: 12'4" x 8'1"  
Area: 100 sq. ft  
Counted as living area: No

Heated: No  
Finished: No  
Enclosed: No  
Contiguous: Yes  
Permitted: Yes  
Wet space: No  
Addition: No  
Conversion: No

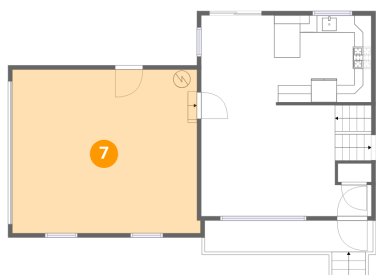
## 6 Floor 2 - Porch



Dimensions: 19'7" x 3'7"  
Area: 70 sq. ft  
Counted as living area: No

Heated: No  
Finished: No  
Enclosed: No  
Contiguous: Yes  
Permitted: Yes  
Wet space: No  
Addition: No  
Conversion: No

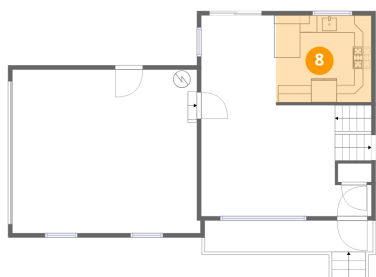
## 7 Floor 2 - Garage



Dimensions: 21'10" x 19'0"  
Area: 415 sq. ft  
Counted as living area: No

Heated: No  
Finished: No  
Enclosed: Yes  
Contiguous: Yes  
Permitted: Yes  
Wet space: No  
Addition: No  
Conversion: No

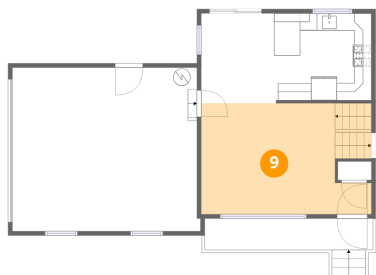
## 8 Floor 2 - Kitchen



Dimensions: 11'1" x 10'1"  
Area: 112 sq. ft  
Counted as living area: Yes

Heated: Yes  
Finished: Yes  
Enclosed: Yes  
Contiguous: Yes  
Permitted: Yes  
Wet space: No  
Addition: No  
Conversion: No

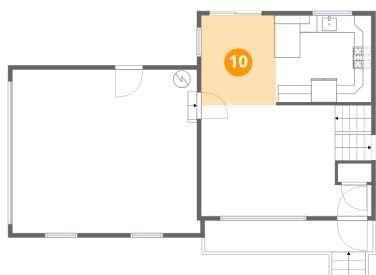
### 9 Floor 2 - Living Room



Dimensions: 19'9" x 12'10"  
Area: 254 sq. ft  
Counted as living area: Yes

Heated: Yes  
Finished: Yes  
Enclosed: Yes  
Contiguous: Yes  
Permitted: Yes  
Wet space: No  
Addition: No  
Conversion: No

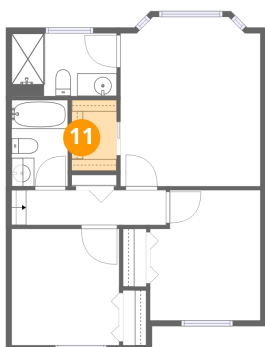
### 10 Floor 2 - Dining Area



Dimensions: 8'8" x 10'5"  
Area: 91 sq. ft  
Counted as living area: Yes

Heated: Yes  
Finished: Yes  
Enclosed: Yes  
Contiguous: Yes  
Permitted: Yes  
Wet space: No  
Addition: No  
Conversion: No

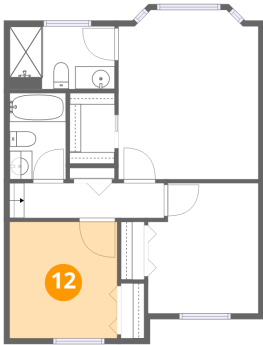
### 11 Floor 3 - W.I.C.



Dimensions: 4'0" x 6'2"  
Area: 25 sq. ft  
Counted as living area: Yes

Heated: Yes  
Finished: Yes  
Enclosed: Yes  
Contiguous: Yes  
Permitted: Yes  
Wet space: No  
Addition: No  
Conversion: No

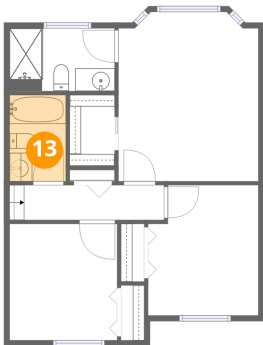
### 12 Floor 3 - Bedroom



Dimensions: 9'6" x 10'3"  
Area: 97 sq. ft  
Counted as living area: Yes

Heated: Yes  
Finished: Yes  
Enclosed: Yes  
Contiguous: Yes  
Permitted: Yes  
Wet space: No  
Addition: No  
Conversion: No

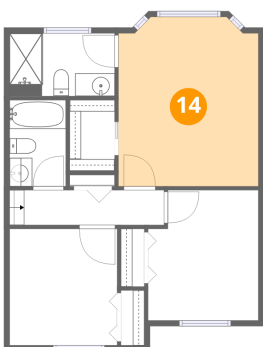
### 13 Floor 3 - Bath



Dimensions: 4'11" x 7'7"  
Area: 38 sq. ft  
Counted as living area: Yes

Heated: Yes  
Finished: Yes  
Enclosed: Yes  
Contiguous: Yes  
Permitted: Yes  
Wet space: Yes  
Addition: No  
Conversion: No

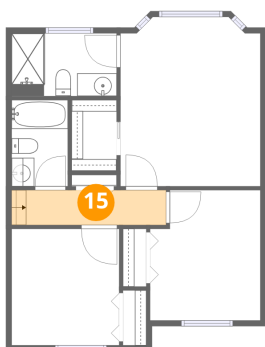
### 14 Floor 3 - Primary Bedroom



Dimensions: 12'4" x 14'11"  
Area: 184 sq. ft  
Counted as living area: Yes

Heated: Yes  
Finished: Yes  
Enclosed: Yes  
Contiguous: Yes  
Permitted: Yes  
Wet space: No  
Addition: No  
Conversion: No

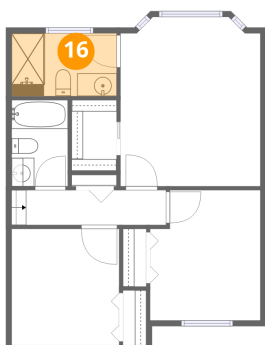
### 15 Floor 3 - Hall



Dimensions: 12'4" x 3'1"  
Area: 38 sq. ft  
Counted as living area: Yes

Heated: Yes  
Finished: Yes  
Enclosed: Yes  
Contiguous: Yes  
Permitted: Yes  
Wet space: No  
Addition: No  
Conversion: No

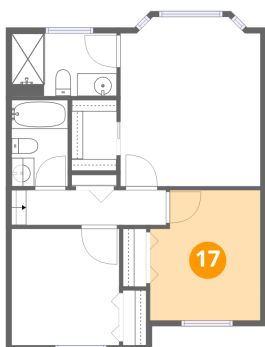
### 16 Floor 3 - Bath



Dimensions: 9'3" x 5'6"  
Area: 51 sq. ft  
Counted as living area: Yes

Heated: Yes  
Finished: Yes  
Enclosed: Yes  
Contiguous: Yes  
Permitted: Yes  
Wet space: Yes  
Addition: No  
Conversion: No

### 17 Floor 3 - Bedroom



Dimensions: 9'9" x 11'5"  
Area: 111 sq. ft  
Counted as living area: Yes

Heated: Yes  
Finished: Yes  
Enclosed: Yes  
Contiguous: Yes  
Permitted: Yes  
Wet space: No  
Addition: No  
Conversion: No