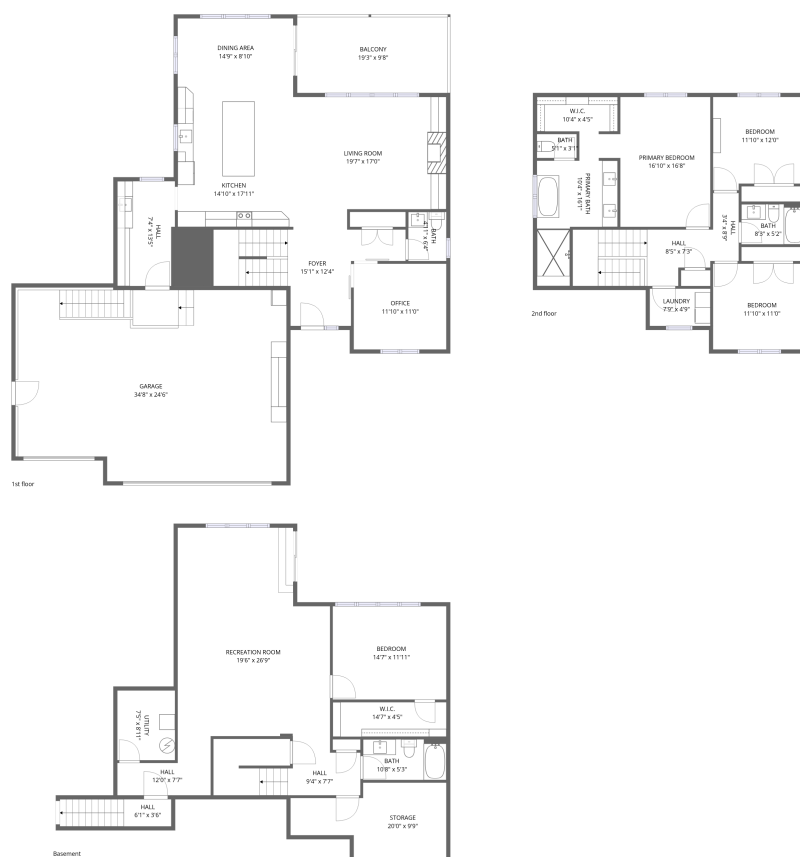


## Home data report

104 Stonewood Drive, Carleton Place, Lanark County, Ontario, Canada, K7C 3P2



**Total Area: 3207 sq. ft**

Basement: 1010 sq. ft, 1st Floor: 1225 sq. ft, 2nd Floor: 972 sq. ft

Excluded: Storage 152 sq. ft, Hall 50 sq. ft, Utility 66 sq. ft, Garage 819 sq. ft, Balcony 188 sq. ft, Walls: 300 sq. ft

## Property summary

 **3** Floors

 **4** Bedrooms

 **3** Bathrooms

Home data report

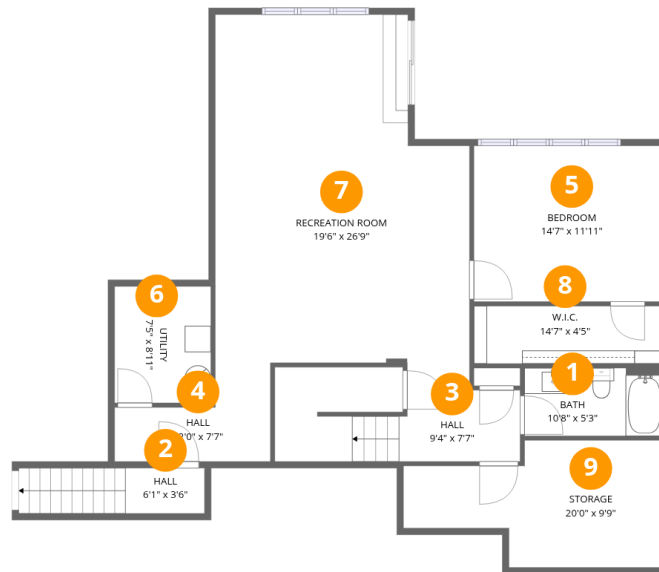
**104 Stonewood Drive, Carleton Place, Lanark County, Ontario,  
Canada, K7C 3P2**

 **1**  
Half baths

 **1**  
Garages

# Home data report

## 104 Stonewood Drive, Carleton Place, Lanark County, Ontario, Canada, K7C 3P2



### Room dimensions

Floor 1 Below grade

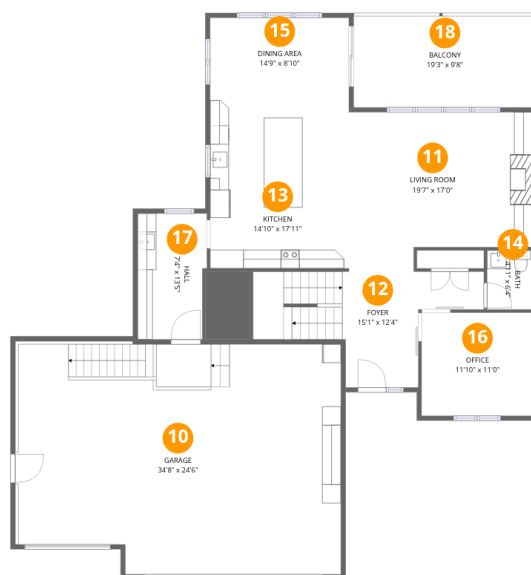
Total:1010sqft

Excluded: 268sqft

#		Dimensions	sqft	Counted as living area
1	Bath	10'8" x 5'3"	56 sq. ft	Yes
2	Hall	6'1" x 3'6"	21 sq. ft	No
3	Hall	9'4" x 7'7"	71 sq. ft	Yes
4	Hall	12'0" x 7'7"	91 sq. ft	Yes
5	Bedroom	14'7" x 11'11"	174 sq. ft	Yes
6	Utility	7'5" x 8'11"	66 sq. ft	No
7	Recreation Room	19'6" x 26'9"	522 sq. ft	Yes
8	W.I.C.	14'7" x 4'5"	64 sq. ft	Yes
9	Storage	20'0" x 9'9"	195 sq. ft	No

## Home data report

104 Stonewood Drive, Carleton Place, Lanark County, Ontario, Canada, K7C 3P2



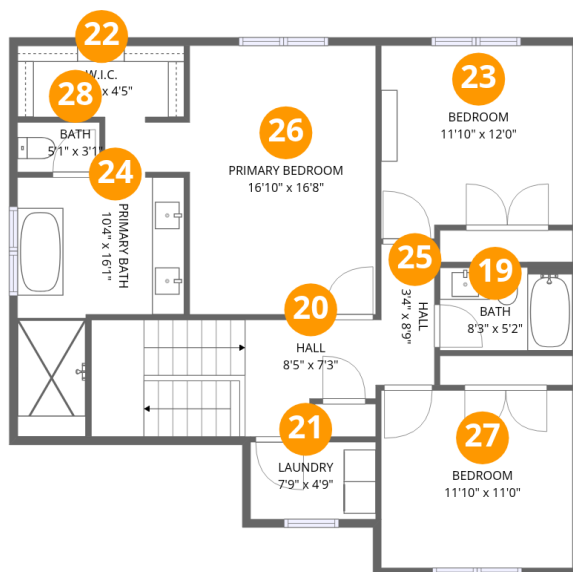
## Room dimensions

Floor 2

Total:1225sqft Excluded: 1007sqft

#		Dimensions	sqft	Counted as living area
10	Garage	34'8" x 24'6"	852 sq. ft	No
11	Living Room	19'7" x 17'0"	333 sq. ft	Yes
12	Foyer	15'1" x 12'4"	186 sq. ft	Yes
13	Kitchen	14'10" x 17'11"	265 sq. ft	Yes
14	Bath	4'11" x 6'4"	31 sq. ft	Yes
15	Dining Area	14'9" x 8'10"	130 sq. ft	Yes
16	Office	11'10" x 11'0"	131 sq. ft	Yes
17	Hall	7'4" x 13'5"	99 sq. ft	Yes
18	Balcony	19'3" x 9'8"	187 sq. ft	No

104 Stonewood Drive, Carleton Place, Lanark County, Ontario, Canada, K7C 3P2



## Room dimensions

Floor 3

Total:972sqft

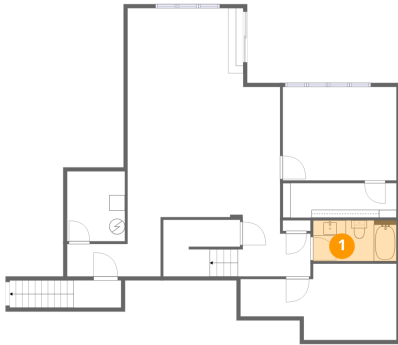
Excluded: 0sqft

#		Dimensions	sqft	Counted as living area
19	Bath	8'3" x 5'2"	42 sq. ft	Yes
20	Hall	8'5" x 7'3"	61 sq. ft	Yes
21	Laundry	7'9" x 4'9"	37 sq. ft	Yes
22	W.I.C.	10'4" x 4'5"	46 sq. ft	Yes
23	Bedroom	11'10" x 12'0"	142 sq. ft	Yes
24	Primary Bath	10'4" x 16'1"	166 sq. ft	Yes
25	Hall	3'4" x 8'9"	29 sq. ft	Yes
26	Primary Bedroom	16'10" x 16'8"	280 sq. ft	Yes
27	Bedroom	11'10" x 11'0"	131 sq. ft	Yes
28	Bath	5'1" x 3'1"	16 sq. ft	Yes

104 Stonewood Drive, Carleton Place, Lanark County, Ontario,  
Canada, K7C 3P2

**1** Floor 1 - Bath

---

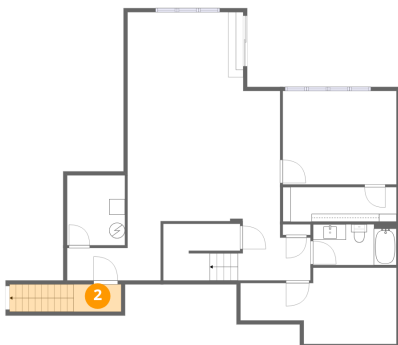


Dimensions: 10'8" x 5'3"  
Area: 56 sq. ft  
Counted as living area: Yes

Heated: Yes  
Finished: Yes  
Enclosed: Yes  
Contiguous: Yes  
Permitted: Yes  
Wet space: Yes  
Addition: No  
Conversion: No

**2** Floor 1 - Hall

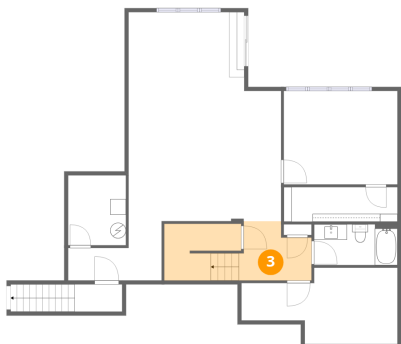
---



Dimensions: 6'1" x 3'6"  
Area: 21 sq. ft  
Counted as living area: No

Heated: Yes  
Finished: No  
Enclosed: Yes  
Contiguous: Yes  
Permitted: Yes  
Wet space: No  
Addition: No  
Conversion: No

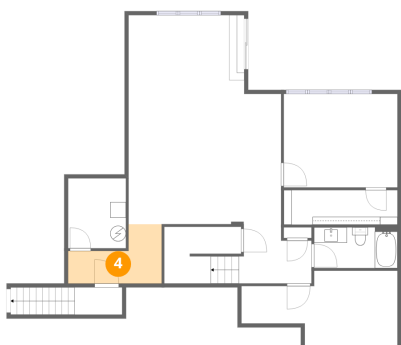
### 3 Floor 1 - Hall



Dimensions: 9'4" x 7'7"  
Area: 71 sq. ft  
Counted as living area: Yes

Heated: Yes  
Finished: Yes  
Enclosed: Yes  
Contiguous: Yes  
Permitted: Yes  
Wet space: No  
Addition: No  
Conversion: No

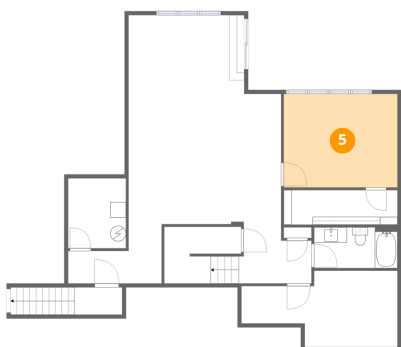
### 4 Floor 1 - Hall



Dimensions: 12'0" x 7'7"  
Area: 91 sq. ft  
Counted as living area: Yes

Heated: Yes  
Finished: Yes  
Enclosed: Yes  
Contiguous: Yes  
Permitted: Yes  
Wet space: No  
Addition: No  
Conversion: No

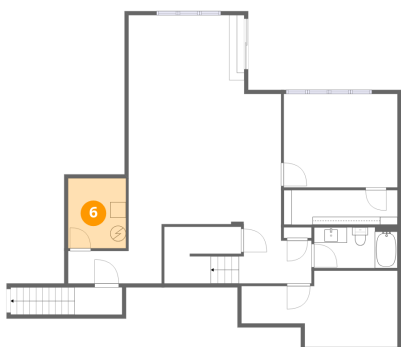
### 5 Floor 1 - Bedroom



Dimensions: 14'7" x 11'11"  
Area: 174 sq. ft  
Counted as living area: Yes

Heated: Yes  
Finished: Yes  
Enclosed: Yes  
Contiguous: Yes  
Permitted: Yes  
Wet space: No  
Addition: No  
Conversion: No

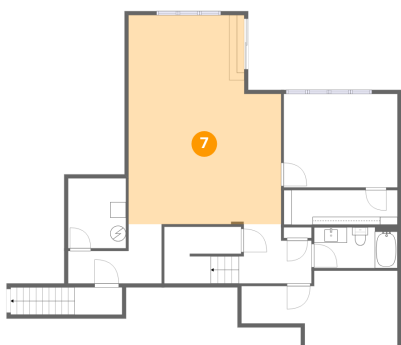
## 6 Floor 1 - Utility



Dimensions: 7'5" x 8'11"  
Area: 66 sq. ft  
Counted as living area: No

Heated: Yes  
Finished: No  
Enclosed: Yes  
Contiguous: Yes  
Permitted: Yes  
Wet space: No  
Addition: No  
Conversion: No

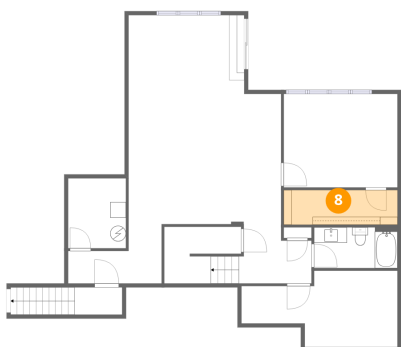
## 7 Floor 1 - Recreation Room



Dimensions: 19'6" x 26'9"  
Area: 522 sq. ft  
Counted as living area: Yes

Heated: Yes  
Finished: Yes  
Enclosed: Yes  
Contiguous: Yes  
Permitted: Yes  
Wet space: No  
Addition: No  
Conversion: No

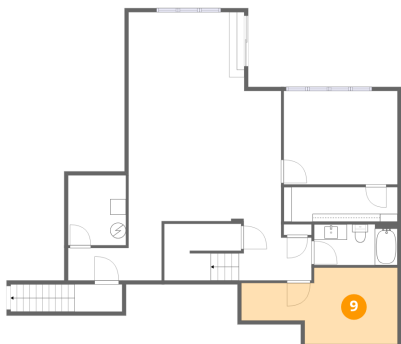
## 8 Floor 1 - W.I.C.



Dimensions: 14'7" x 4'5"  
Area: 64 sq. ft  
Counted as living area: Yes

Heated: Yes  
Finished: Yes  
Enclosed: Yes  
Contiguous: Yes  
Permitted: Yes  
Wet space: No  
Addition: No  
Conversion: No

### 9 Floor 1 - Storage



Dimensions: 20'0" x 9'9"  
Area: 195 sq. ft  
Counted as living area: No

Heated: No  
Finished: No  
Enclosed: No  
Contiguous: Yes  
Permitted: Yes  
Wet space: No  
Addition: No  
Conversion: No

### 10 Floor 2 - Garage



Dimensions: 34'8" x 24'6"  
Area: 852 sq. ft  
Counted as living area: No

Heated: No  
Finished: No  
Enclosed: Yes  
Contiguous: Yes  
Permitted: Yes  
Wet space: No  
Addition: No  
Conversion: No

### 11 Floor 2 - Living Room



Dimensions: 19'7" x 17'0"  
Area: 333 sq. ft  
Counted as living area: Yes

Heated: Yes  
Finished: Yes  
Enclosed: Yes  
Contiguous: Yes  
Permitted: Yes  
Wet space: No  
Addition: No  
Conversion: No

**12** Floor 2 - Foyer



Dimensions: 15'1" x 12'4"  
Area: 186 sq. ft  
Counted as living area: Yes

Heated: Yes  
Finished: Yes  
Enclosed: Yes  
Contiguous: Yes  
Permitted: Yes  
Wet space: No  
Addition: No  
Conversion: No

**13** Floor 2 - Kitchen



Dimensions: 14'10" x 17'11"  
Area: 265 sq. ft  
Counted as living area: Yes

Heated: Yes  
Finished: Yes  
Enclosed: Yes  
Contiguous: Yes  
Permitted: Yes  
Wet space: No  
Addition: No  
Conversion: No

**14** Floor 2 - Bath

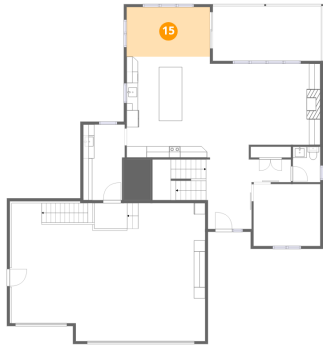


Dimensions: 4'11" x 6'4"  
Area: 31 sq. ft  
Counted as living area: Yes

Heated: Yes  
Finished: Yes  
Enclosed: Yes  
Contiguous: Yes  
Permitted: Yes  
Wet space: Yes  
Addition: No  
Conversion: No

104 Stonewood Drive, Carleton Place, Lanark County, Ontario, Canada, K7C 3P2

### 15 Floor 2 - Dining Area



Dimensions: 14'9" x 8'10"  
Area: 130 sq. ft  
Counted as living area: Yes

Heated: Yes  
Finished: Yes  
Enclosed: Yes  
Contiguous: Yes  
Permitted: Yes  
Wet space: No  
Addition: No  
Conversion: No

### 16 Floor 2 - Office



Dimensions: 11'10" x 11'0"  
Area: 131 sq. ft  
Counted as living area: Yes

Heated: Yes  
Finished: Yes  
Enclosed: Yes  
Contiguous: Yes  
Permitted: Yes  
Wet space: No  
Addition: No  
Conversion: No

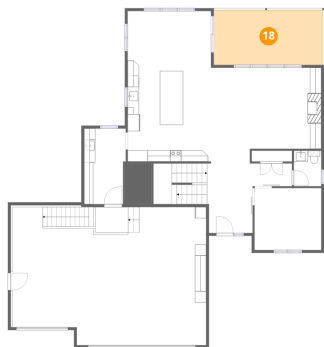
### 17 Floor 2 - Hall



Dimensions: 7'4" x 13'5"  
Area: 99 sq. ft  
Counted as living area: Yes

Heated: Yes  
Finished: Yes  
Enclosed: Yes  
Contiguous: Yes  
Permitted: Yes  
Wet space: No  
Addition: No  
Conversion: No

**18** Floor 2 - Balcony



Dimensions: 19'3" x 9'8"  
Area: 187 sq. ft  
Counted as living area: No

Heated: No  
Finished: No  
Enclosed: No  
Contiguous: Yes  
Permitted: Yes  
Wet space: No  
Addition: No  
Conversion: No

**19** Floor 3 - Bath



Dimensions: 8'3" x 5'2"  
Area: 42 sq. ft  
Counted as living area: Yes

Heated: Yes  
Finished: Yes  
Enclosed: Yes  
Contiguous: Yes  
Permitted: Yes  
Wet space: Yes  
Addition: No  
Conversion: No

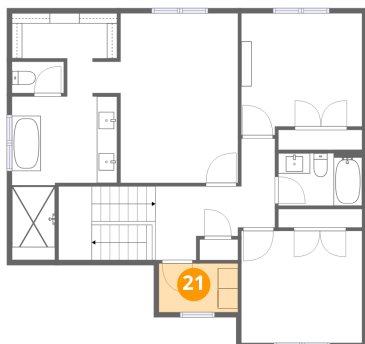
**20** Floor 3 - Hall



Dimensions: 8'5" x 7'3"  
Area: 61 sq. ft  
Counted as living area: Yes

Heated: Yes  
Finished: Yes  
Enclosed: Yes  
Contiguous: Yes  
Permitted: Yes  
Wet space: No  
Addition: No  
Conversion: No

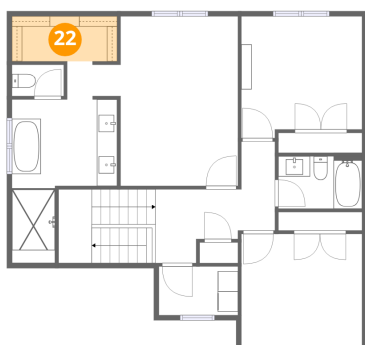
**21** Floor 3 - Laundry



Dimensions: 7'9" x 4'9"  
Area: 37 sq. ft  
Counted as living area: Yes

Heated: Yes  
Finished: Yes  
Enclosed: Yes  
Contiguous: Yes  
Permitted: Yes  
Wet space: No  
Addition: No  
Conversion: No

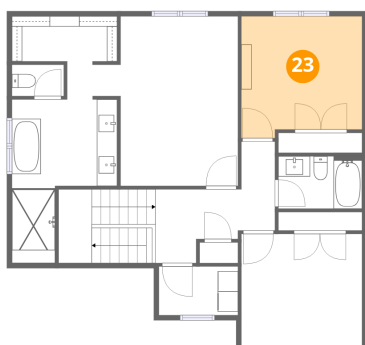
**22** Floor 3 - W.I.C.



Dimensions: 10'4" x 4'5"  
Area: 46 sq. ft  
Counted as living area: Yes

Heated: Yes  
Finished: Yes  
Enclosed: Yes  
Contiguous: Yes  
Permitted: Yes  
Wet space: No  
Addition: No  
Conversion: No

**23** Floor 3 - Bedroom



Dimensions: 11'10" x 12'0"  
Area: 142 sq. ft  
Counted as living area: Yes

Heated: Yes  
Finished: Yes  
Enclosed: Yes  
Contiguous: Yes  
Permitted: Yes  
Wet space: No  
Addition: No  
Conversion: No

### 24 Floor 3 - Primary Bath



Dimensions: 10'4" x 16'1"  
Area: 166 sq. ft  
Counted as living area: Yes

Heated: Yes  
Finished: Yes  
Enclosed: Yes  
Contiguous: Yes  
Permitted: Yes  
Wet space: Yes  
Addition: No  
Conversion: No

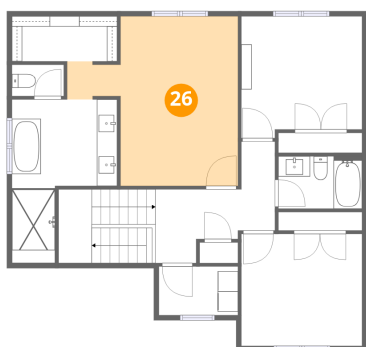
### 25 Floor 3 - Hall



Dimensions: 3'4" x 8'9"  
Area: 29 sq. ft  
Counted as living area: Yes

Heated: Yes  
Finished: Yes  
Enclosed: Yes  
Contiguous: Yes  
Permitted: Yes  
Wet space: No  
Addition: No  
Conversion: No

### 26 Floor 3 - Primary Bedroom



Dimensions: 16'10" x 16'8"  
Area: 280 sq. ft  
Counted as living area: Yes

Heated: Yes  
Finished: Yes  
Enclosed: Yes  
Contiguous: Yes  
Permitted: Yes  
Wet space: No  
Addition: No  
Conversion: No

104 Stonewood Drive, Carleton Place, Lanark County, Ontario,  
Canada, K7C 3P2

**27** Floor 3 - Bedroom

---

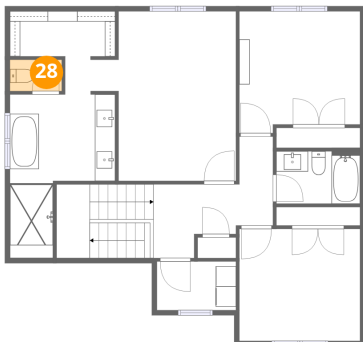


Dimensions: 11'10" x 11'0"  
Area: 131 sq. ft  
Counted as living area: Yes

Heated: Yes  
Finished: Yes  
Enclosed: Yes  
Contiguous: Yes  
Permitted: Yes  
Wet space: No  
Addition: No  
Conversion: No

**28** Floor 3 - Bath

---



Dimensions: 5'1" x 3'1"  
Area: 16 sq. ft  
Counted as living area: Yes

Heated: Yes  
Finished: Yes  
Enclosed: Yes  
Contiguous: Yes  
Permitted: Yes  
Wet space: Yes  
Addition: No  
Conversion: No