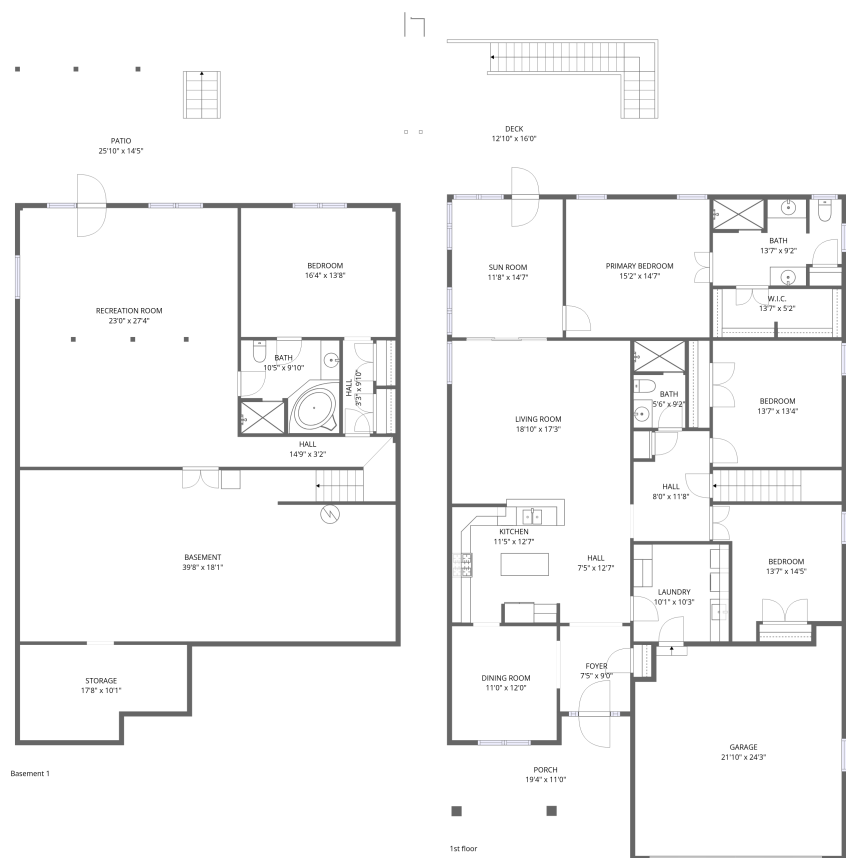


Home data report

7125 Linn Cove Court, Roanoke, Virginia 24018, United States



Total Area: 3191 sq. ft

Below Ground: 1097 sq. ft, 1st Floor: 2094 sq. ft

Excluded: Storage 162 sq. ft, Patio 307 sq. ft, Basement 718 sq. ft, Garage 480 sq. ft, Porch 175 sq. ft, Deck 185 sq. ft, Walls: 227 sq. ft

Property summary

**2**
Floors

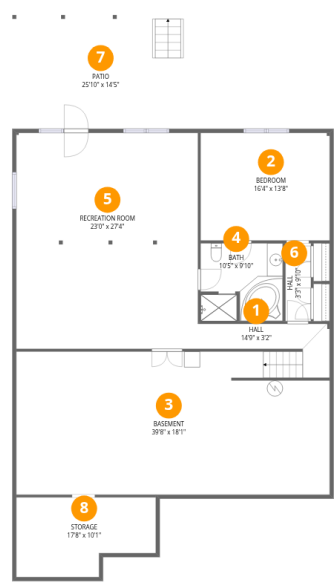
**4**
Bedrooms

**3**
Bathrooms

**1**
Garages

Home data report

7125 Linn Cove Court, Roanoke, Virginia 24018, United States



Room dimensions

Floor 1 Below grade

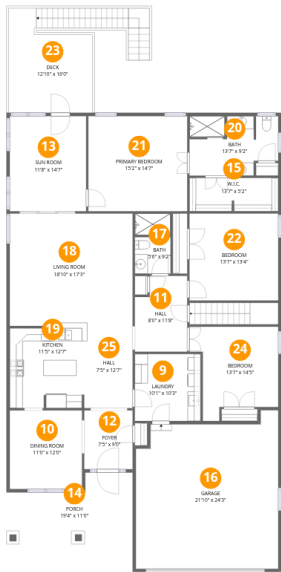
Total:1097sqft

Excluded: 1187sqft

#		Dimensions	sqft	Counted as living area
1	Hall	14'9" x 3'2"	54 sq. ft	Yes
2	Bedroom	16'4" x 13'8"	223 sq. ft	Yes
3	Basement	39'8" x 18'1"	714 sq. ft	No
4	Bath	10'5" x 9'10"	101 sq. ft	Yes
5	Recreation Room	23'0" x 27'4"	628 sq. ft	Yes
6	Hall	3'3" x 9'10"	32 sq. ft	Yes
7	Patio	25'10" x 14'5"	307 sq. ft	No
8	Storage	17'8" x 10'1"	156 sq. ft	No

Home data report

7125 Linn Cove Court, Roanoke, Virginia 24018, United States



Room dimensions

Floor 2

Total:2094sqft

Excluded: 840sqft

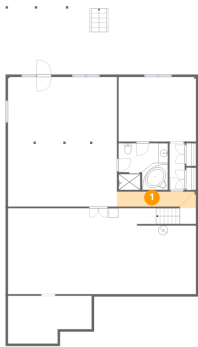
#		Dimensions	sqft	Counted as living area
9	Laundry	10'1" x 10'3"	103 sq. ft	Yes
10	Dining Room	11'0" x 12'0"	133 sq. ft	Yes
11	Hall	8'0" x 11'8"	86 sq. ft	Yes
12	Foyer	7'5" x 9'0"	67 sq. ft	Yes
13	Sun Room	11'8" x 14'7"	171 sq. ft	Yes
14	Porch	19'4" x 11'0"	175 sq. ft	No
15	W.I.C.	13'7" x 5'2"	69 sq. ft	Yes
16	Garage	21'10" x 24'3"	480 sq. ft	No
17	Bath	5'6" x 9'2"	49 sq. ft	Yes
18	Living Room	18'10" x 17'3"	324 sq. ft	Yes
19	Kitchen	11'5" x 12'7"	140 sq. ft	Yes

Home data report

7125 Linn Cove Court, Roanoke, Virginia 24018, United States

#		Dimensions	sqft	Counted as living area
20	Bath	13'7" x 9'2"	112 sq. ft	Yes
21	Primary Bedroom	15'2" x 14'7"	221 sq. ft	Yes
22	Bedroom	13'7" x 13'4"	181 sq. ft	Yes
23	Deck	12'10" x 16'0"	185 sq. ft	No
24	Bedroom	13'7" x 14'5"	156 sq. ft	Yes
25	Hall	7'5" x 12'7"	93 sq. ft	Yes

1 Floor 1 - Hall



Dimensions: 14'9" x 3'2"
Area: 54 sq. ft
Counted as living area: Yes

Heated: Yes
Finished: Yes
Enclosed: Yes
Contiguous: Yes
Permitted: Yes
Wet space: No
Addition: No
Conversion: No

2 Floor 1 - Bedroom



Dimensions: 16'4" x 13'8"
Area: 223 sq. ft
Counted as living area: Yes

Heated: Yes
Finished: Yes
Enclosed: Yes
Contiguous: Yes
Permitted: Yes
Wet space: No
Addition: No
Conversion: No

3 Floor 1 - Basement



Dimensions: 39'8" x 18'1"
Area: 714 sq. ft
Counted as living area: No

Heated: Yes
Finished: No
Enclosed: Yes
Contiguous: Yes
Permitted: Yes
Wet space: No
Addition: No
Conversion: No

4 Floor 1 - Bath



Dimensions: 10'5" x 9'10"
Area: 101 sq. ft
Counted as living area: Yes

Heated: Yes
Finished: Yes
Enclosed: Yes
Contiguous: Yes
Permitted: Yes
Wet space: Yes
Addition: No
Conversion: No

5 Floor 1 - Recreation Room



Dimensions: 23'0" x 27'4"
Area: 628 sq. ft
Counted as living area: Yes

Heated: Yes
Finished: Yes
Enclosed: Yes
Contiguous: Yes
Permitted: Yes
Wet space: No
Addition: No
Conversion: No

6 Floor 1 - Hall



Dimensions: 3'3" x 9'10"
Area: 32 sq. ft
Counted as living area: Yes

Heated: Yes
Finished: Yes
Enclosed: Yes
Contiguous: Yes
Permitted: Yes
Wet space: No
Addition: No
Conversion: No

7 Floor 1 - Patio



Dimensions: 25'10" x 14'5"
Area: 307 sq. ft
Counted as living area: No

Heated: No
Finished: No
Enclosed: No
Contiguous: Yes
Permitted: Yes
Wet space: No
Addition: No
Conversion: No

8 Floor 1 - Storage



Dimensions: 17'8" x 10'1"
Area: 156 sq. ft
Counted as living area: No

Heated: No
Finished: No
Enclosed: No
Contiguous: Yes
Permitted: Yes
Wet space: No
Addition: No
Conversion: No

9 Floor 2 - Laundry



Dimensions: 10'1" x 10'3"
Area: 103 sq. ft
Counted as living area: Yes

Heated: Yes
Finished: Yes
Enclosed: Yes
Contiguous: Yes
Permitted: Yes
Wet space: No
Addition: No
Conversion: No

10 Floor 2 - Dining Room



Dimensions: 11'0" x 12'0"
Area: 133 sq. ft
Counted as living area: Yes

Heated: Yes
Finished: Yes
Enclosed: Yes
Contiguous: Yes
Permitted: Yes
Wet space: No
Addition: No
Conversion: No

11 Floor 2 - Hall



Dimensions: 8'0" x 11'8"
Area: 86 sq. ft
Counted as living area: Yes

Heated: Yes
Finished: Yes
Enclosed: Yes
Contiguous: Yes
Permitted: Yes
Wet space: No
Addition: No
Conversion: No

12 Floor 2 - Foyer



Dimensions: 7'5" x 9'0"
Area: 67 sq. ft
Counted as living area: Yes

Heated: Yes
Finished: Yes
Enclosed: Yes
Contiguous: Yes
Permitted: Yes
Wet space: No
Addition: No
Conversion: No

13 Floor 2 - Sun Room



Dimensions: 11'8" x 14'7"
Area: 171 sq. ft
Counted as living area: Yes

Heated: Yes
Finished: Yes
Enclosed: Yes
Contiguous: Yes
Permitted: Yes
Wet space: No
Addition: No
Conversion: No

14 Floor 2 - Porch



Dimensions: 19'4" x 11'0"
Area: 175 sq. ft
Counted as living area: No

Heated: No
Finished: No
Enclosed: No
Contiguous: Yes
Permitted: Yes
Wet space: No
Addition: No
Conversion: No

15 Floor 2 - W.I.C.



Dimensions: 13'7" x 5'2"
Area: 69 sq. ft
Counted as living area: Yes

Heated: Yes
Finished: Yes
Enclosed: Yes
Contiguous: Yes
Permitted: Yes
Wet space: No
Addition: No
Conversion: No

16 Floor 2 - Garage



Dimensions: 21'10" x 24'3"
Area: 480 sq. ft
Counted as living area: No

Heated: No
Finished: No
Enclosed: Yes
Contiguous: Yes
Permitted: Yes
Wet space: No
Addition: No
Conversion: No

17 Floor 2 - Bath



Dimensions: 5'6" x 9'2"
Area: 49 sq. ft
Counted as living area: Yes

Heated: Yes
Finished: Yes
Enclosed: Yes
Contiguous: Yes
Permitted: Yes
Wet space: Yes
Addition: No
Conversion: No

18 Floor 2 - Living Room



Dimensions: 18'10" x 17'3"
Area: 324 sq. ft
Counted as living area: Yes

Heated: Yes
Finished: Yes
Enclosed: Yes
Contiguous: Yes
Permitted: Yes
Wet space: No
Addition: No
Conversion: No

19 Floor 2 - Kitchen



Dimensions: 11'5" x 12'7"
Area: 140 sq. ft
Counted as living area: Yes

Heated: Yes
Finished: Yes
Enclosed: Yes
Contiguous: Yes
Permitted: Yes
Wet space: No
Addition: No
Conversion: No

20 Floor 2 - Bath



Dimensions: 13'7" x 9'2"
Area: 112 sq. ft
Counted as living area: Yes

Heated: Yes
Finished: Yes
Enclosed: Yes
Contiguous: Yes
Permitted: Yes
Wet space: Yes
Addition: No
Conversion: No

21 Floor 2 - Primary Bedroom



Dimensions: 15'2" x 14'7"
Area: 221 sq. ft
Counted as living area: Yes

Heated: Yes
Finished: Yes
Enclosed: Yes
Contiguous: Yes
Permitted: Yes
Wet space: No
Addition: No
Conversion: No

22 Floor 2 - Bedroom



Dimensions: 13'7" x 13'4"
Area: 181 sq. ft
Counted as living area: Yes

Heated: Yes
Finished: Yes
Enclosed: Yes
Contiguous: Yes
Permitted: Yes
Wet space: No
Addition: No
Conversion: No

23 Floor 2 - Deck



Dimensions: 12'10" x 16'0"
Area: 185 sq. ft
Counted as living area: No

Heated: No
Finished: No
Enclosed: No
Contiguous: Yes
Permitted: Yes
Wet space: No
Addition: No
Conversion: No

24 Floor 2 - Bedroom



Dimensions: 13'7" x 14'5"
Area: 156 sq. ft
Counted as living area: Yes

Heated: Yes
Finished: Yes
Enclosed: Yes
Contiguous: Yes
Permitted: Yes
Wet space: No
Addition: No
Conversion: No

25 Floor 2 - Hall



Dimensions: 7'5" x 12'7"
Area: 93 sq. ft
Counted as living area: Yes

Heated: Yes
Finished: Yes
Enclosed: Yes
Contiguous: Yes
Permitted: Yes
Wet space: No
Addition: No
Conversion: No