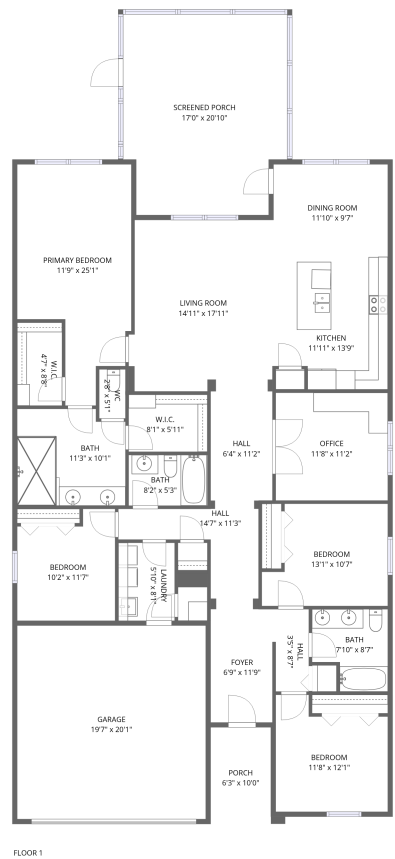


Home report

30415 Caravelle Lane, Wesley Chapel, Pasco County, Florida,  
United States, 33545




Total Area: 2041 sq. ft

Floor 1: 2041 sq. ft

Excluded: Porch 63 sq. ft, Screened porch 337 sq. ft, Garage 394 sq. ft, Walls: 161 sq. ft

Property summary

 1 Floors

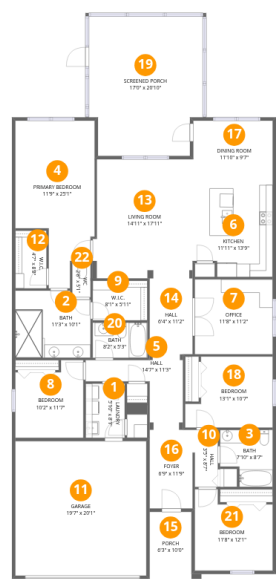
 4 Bedrooms

 3 Bathrooms

 1 Garages

Home report

30415 Caravelle Lane, Wesley Chapel, Pasco County, Florida,  
United States, 33545



Room dimensions

Floor 1

Total:2041sqft   Excluded: 794sqft

#		Max Dimensions	sqft	Included
1	Laundry	5'10" x 8'1"	47 sq. ft	Yes
2	Bath	11'3" x 10'1"	109 sq. ft	Yes
3	Bath	7'10" x 8'7"	58 sq. ft	Yes
4	Primary Bedroom	11'9" x 25'1"	235 sq. ft	Yes
5	Hall	14'7" x 11'3"	87 sq. ft	Yes
6	Kitchen	11'11" x 13'9"	155 sq. ft	Yes
7	Office	11'8" x 11'2"	130 sq. ft	Yes
8	Bedroom	10'2" x 11'7"	106 sq. ft	Yes
9	W.I.C.	8'1" x 5'11"	49 sq. ft	Yes
10	Hall	3'5" x 8'7"	29 sq. ft	Yes
11	Garage	19'7" x 20'1"	394 sq. ft	No

## Home report

**30415 Caravelle Lane, Wesley Chapel, Pasco County, Florida,  
United States, 33545**

#		Max Dimensions	sqft	Included
12	W.I.C.	4'7" x 8'8"	40 sq. ft	Yes
13	Living Room	14'11" x 17'11"	261 sq. ft	Yes
14	Hall	6'4" x 11'2"	72 sq. ft	Yes
15	Porch	6'3" x 10'0"	63 sq. ft	No
16	Foyer	6'9" x 11'9"	77 sq. ft	Yes
17	Dining Room	11'10" x 9'7"	114 sq. ft	Yes
18	Bedroom	13'1" x 10'7"	122 sq. ft	Yes
19	Screened Porch	17'0" x 20'10"	337 sq. ft	No
20	Bath	8'2" x 5'3"	43 sq. ft	Yes
21	Bedroom	11'8" x 12'1"	123 sq. ft	Yes
22	WC	2'8" x 5'1"	14 sq. ft	Yes

30415 Caravelle Lane, Wesley Chapel, Pasco County, Florida,  
United States, 33545

**1 Floor 1 - Laundry**



Max Dimensions: 5'10" x 8'1"  
Calculated Area: 47 sq. ft  
Included: Yes

Heated: Yes  
Finished: Yes  
Enclosed: Yes  
Contiguous: Yes  
Permitted: Yes  
Wet space: No  
Addition: No  
Conversion: No

**2 Floor 1 - Bath**



Max Dimensions: 11'3" x 10'1"  
Calculated Area: 109 sq. ft  
Included: Yes

Heated: Yes  
Finished: Yes  
Enclosed: Yes  
Contiguous: Yes  
Permitted: Yes  
Wet space: Yes  
Addition: No  
Conversion: No

30415 Caravelle Lane, Wesley Chapel, Pasco County, Florida,  
United States, 33545

3 Floor 1 - Bath



Max Dimensions: 7'10" x 8'7"  
Calculated Area: 58 sq. ft  
Included: Yes

Heated: Yes  
Finished: Yes  
Enclosed: Yes  
Contiguous: Yes  
Permitted: Yes  
Wet space: Yes  
Addition: No  
Conversion: No

4 Floor 1 - Primary Bedroom



Max Dimensions: 11'9" x 25'1"  
Calculated Area: 235 sq. ft  
Included: Yes

Heated: Yes  
Finished: Yes  
Enclosed: Yes  
Contiguous: Yes  
Permitted: Yes  
Wet space: No  
Addition: No  
Conversion: No

5 Floor 1 - Hall



Max Dimensions: 14'7" x 11'3"  
Calculated Area: 87 sq. ft  
Included: Yes

Heated: Yes  
Finished: Yes  
Enclosed: Yes  
Contiguous: Yes  
Permitted: Yes  
Wet space: No  
Addition: No  
Conversion: No

30415 Caravelle Lane, Wesley Chapel, Pasco County, Florida,  
United States, 33545

6 Floor 1 - Kitchen



Max Dimensions: 11'11" x 13'9"  
Calculated Area: 155 sq. ft  
Included: Yes

Heated: Yes  
Finished: Yes  
Enclosed: Yes  
Contiguous: Yes  
Permitted: Yes  
Wet space: No  
Addition: No  
Conversion: No

7 Floor 1 - Office



Max Dimensions: 11'8" x 11'2"  
Calculated Area: 130 sq. ft  
Included: Yes

Heated: Yes  
Finished: Yes  
Enclosed: Yes  
Contiguous: Yes  
Permitted: Yes  
Wet space: No  
Addition: No  
Conversion: No

8 Floor 1 - Bedroom



Max Dimensions: 10'2" x 11'7"  
Calculated Area: 106 sq. ft  
Included: Yes

Heated: Yes  
Finished: Yes  
Enclosed: Yes  
Contiguous: Yes  
Permitted: Yes  
Wet space: No  
Addition: No  
Conversion: No

30415 Caravelle Lane, Wesley Chapel, Pasco County, Florida,  
United States, 33545

9 Floor 1 - W.I.C.



Max Dimensions: 8'1" x 5'11"  
Calculated Area: 49 sq. ft  
Included: Yes

Heated: Yes  
Finished: Yes  
Enclosed: Yes  
Contiguous: Yes  
Permitted: Yes  
Wet space: No  
Addition: No  
Conversion: No

10 Floor 1 - Hall



Max Dimensions: 3'5" x 8'7"  
Calculated Area: 29 sq. ft  
Included: Yes

Heated: Yes  
Finished: Yes  
Enclosed: Yes  
Contiguous: Yes  
Permitted: Yes  
Wet space: No  
Addition: No  
Conversion: No

11 Floor 1 - Garage



Max Dimensions: 19'7" x 20'1"  
Calculated Area: 394 sq. ft  
Included: No

Heated: No  
Finished: No  
Enclosed: Yes  
Contiguous: Yes  
Permitted: Yes  
Wet space: No  
Addition: No  
Conversion: No

30415 Caravelle Lane, Wesley Chapel, Pasco County, Florida,  
United States, 33545

12 Floor 1 - W.I.C.



Max Dimensions: 4'7" x 8'8"  
Calculated Area: 40 sq. ft  
Included: Yes

Heated: Yes  
Finished: Yes  
Enclosed: Yes  
Contiguous: Yes  
Permitted: Yes  
Wet space: No  
Addition: No  
Conversion: No

13 Floor 1 - Living Room



Max Dimensions: 14'11" x 17'11"  
Calculated Area: 261 sq. ft  
Included: Yes

Heated: Yes  
Finished: Yes  
Enclosed: Yes  
Contiguous: Yes  
Permitted: Yes  
Wet space: No  
Addition: No  
Conversion: No

14 Floor 1 - Hall



Max Dimensions: 6'4" x 11'2"  
Calculated Area: 72 sq. ft  
Included: Yes

Heated: Yes  
Finished: Yes  
Enclosed: Yes  
Contiguous: Yes  
Permitted: Yes  
Wet space: No  
Addition: No  
Conversion: No



30415 Caravelle Lane, Wesley Chapel, Pasco County, Florida,  
United States, 33545

### 15 Floor 1 - Porch



Max Dimensions: 6'3" x  
10'0"  
Calculated Area: 63 sq. ft  
Included: No

Heated: No  
Finished: No  
Enclosed: No  
Contiguous:  
Yes  
Permitted: Yes  
Wet space: No  
Addition: No  
Conversion: No

### 16 Floor 1 - Foyer



Max Dimensions: 6'9" x  
11'9"  
Calculated Area: 77 sq. ft  
Included: Yes

Heated: Yes  
Finished: Yes  
Enclosed: Yes  
Contiguous:  
Yes  
Permitted: Yes  
Wet space: No  
Addition: No  
Conversion: No

### 17 Floor 1 - Dining Room



Max Dimensions: 11'10" x  
9'7"  
Calculated Area: 114 sq. ft  
Included: Yes

Heated: Yes  
Finished: Yes  
Enclosed: Yes  
Contiguous:  
Yes  
Permitted: Yes  
Wet space: No  
Addition: No  
Conversion: No

30415 Caravelle Lane, Wesley Chapel, Pasco County, Florida,  
United States, 33545

### 18 Floor 1 - Bedroom

---



Max Dimensions: 13'1" x 10'7"  
Calculated Area: 122 sq. ft  
Included: Yes

Heated: Yes  
Finished: Yes  
Enclosed: Yes  
Contiguous: Yes  
Permitted: Yes  
Wet space: No  
Addition: No  
Conversion: No

### 19 Floor 1 - Screened Porch

---



Max Dimensions: 17'0" x 20'10"  
Calculated Area: 337 sq. ft  
Included: No

Heated: No  
Finished: No  
Enclosed: No  
Contiguous: Yes  
Permitted: Yes  
Wet space: No  
Addition: No  
Conversion: No

### 20 Floor 1 - Bath

---



Max Dimensions: 8'2" x 5'3"  
Calculated Area: 43 sq. ft  
Included: Yes

Heated: Yes  
Finished: Yes  
Enclosed: Yes  
Contiguous: Yes  
Permitted: Yes  
Wet space: Yes  
Addition: No  
Conversion: No

30415 Caravelle Lane, Wesley Chapel, Pasco County, Florida,  
United States, 33545

21 Floor 1 - Bedroom



Max Dimensions: 11'8" x 12'1"  
Calculated Area: 123 sq. ft  
Included: Yes

Heated: Yes  
Finished: Yes  
Enclosed: Yes  
Contiguous: Yes  
Permitted: Yes  
Wet space: No  
Addition: No  
Conversion: No

22 Floor 1 - WC



Max Dimensions: 2'8" x 5'1"  
Calculated Area: 14 sq. ft  
Included: Yes

Heated: Yes  
Finished: Yes  
Enclosed: Yes  
Contiguous: Yes  
Permitted: Yes  
Wet space: Yes  
Addition: No  
Conversion: No