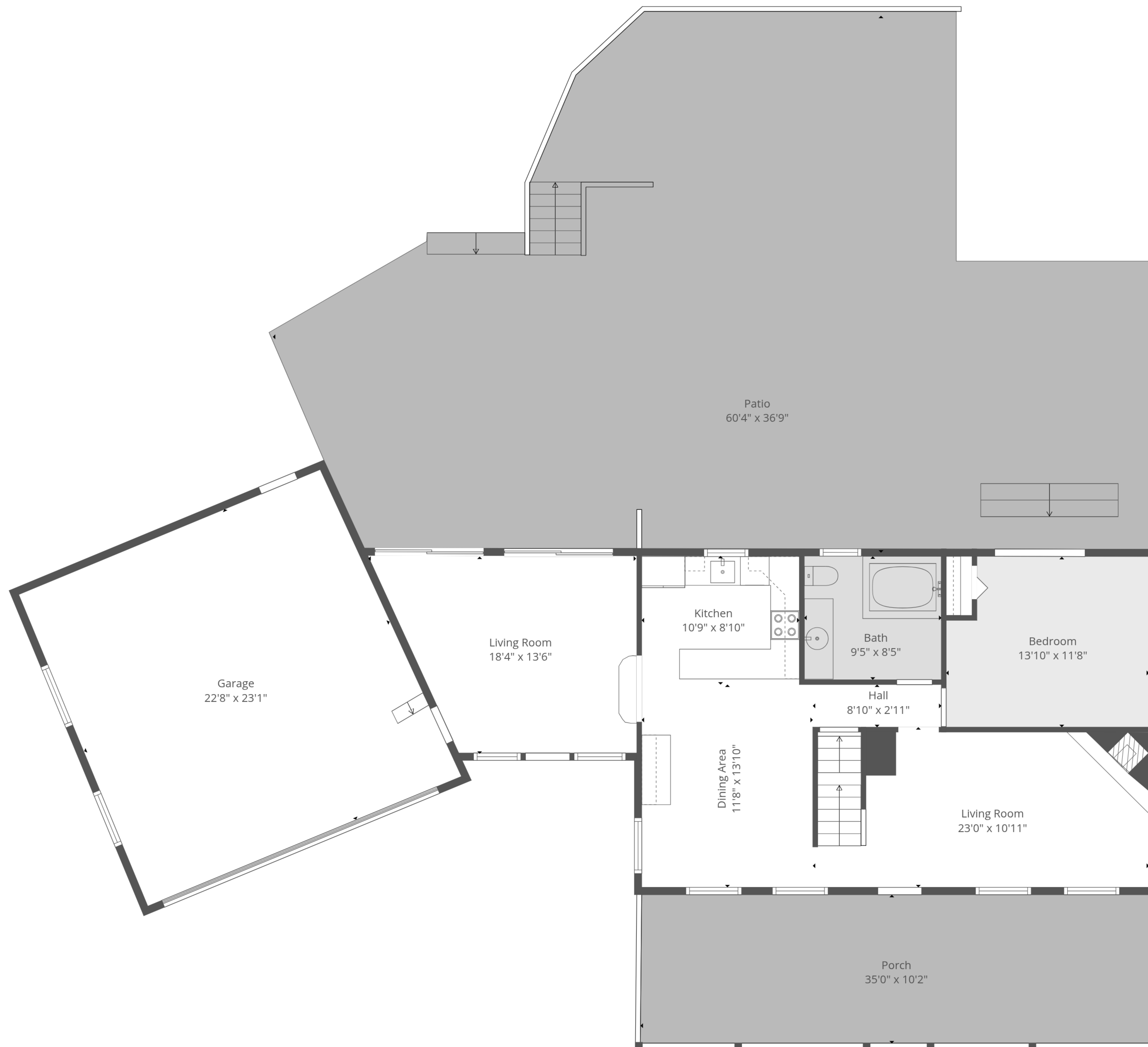


Basement
34'8" x 22'8"

TOTAL: 2265 sq. ft

Basement: 806 sq. ft, 1st floor: 997 sq. ft, 2nd floor: 462 sq. ft
EXCLUDED AREAS: PORCH: 355 sq. ft, PATIO: 1599 sq. ft, GARAGE: 526 sq. ft,
LOW CEILING: 81 sq. ft, WALLS: 229 sq. ft

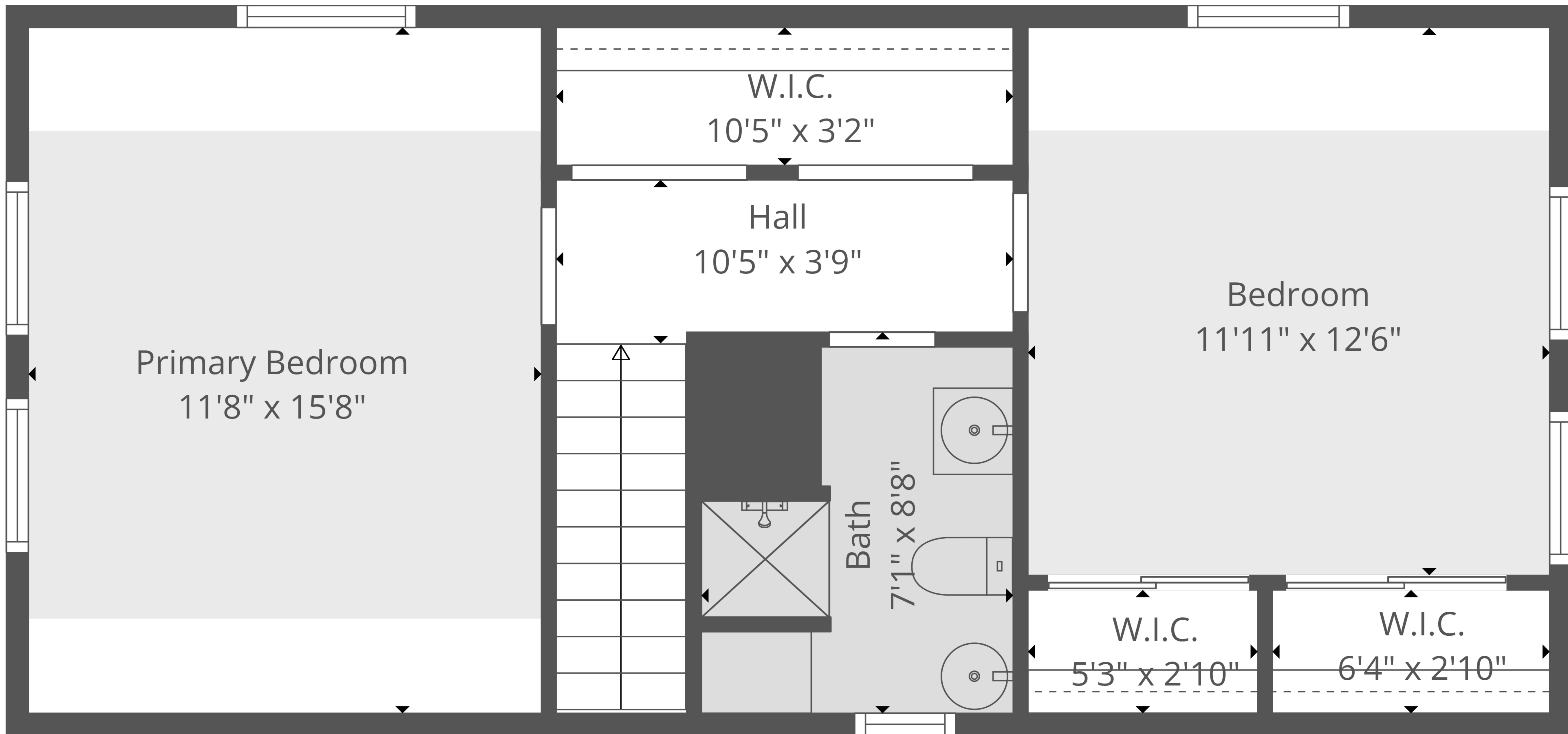


TOTAL: 2265 sq. ft

Basement: 806 sq. ft, 1st floor: 997 sq. ft, 2nd floor: 462 sq. ft

EXCLUDED AREAS: PORCH: 355 sq. ft, PATIO: 1599 sq. ft, GARAGE: 526 sq. ft,

LOW CEILING: 81 sq. ft, WALLS: 229 sq. ft

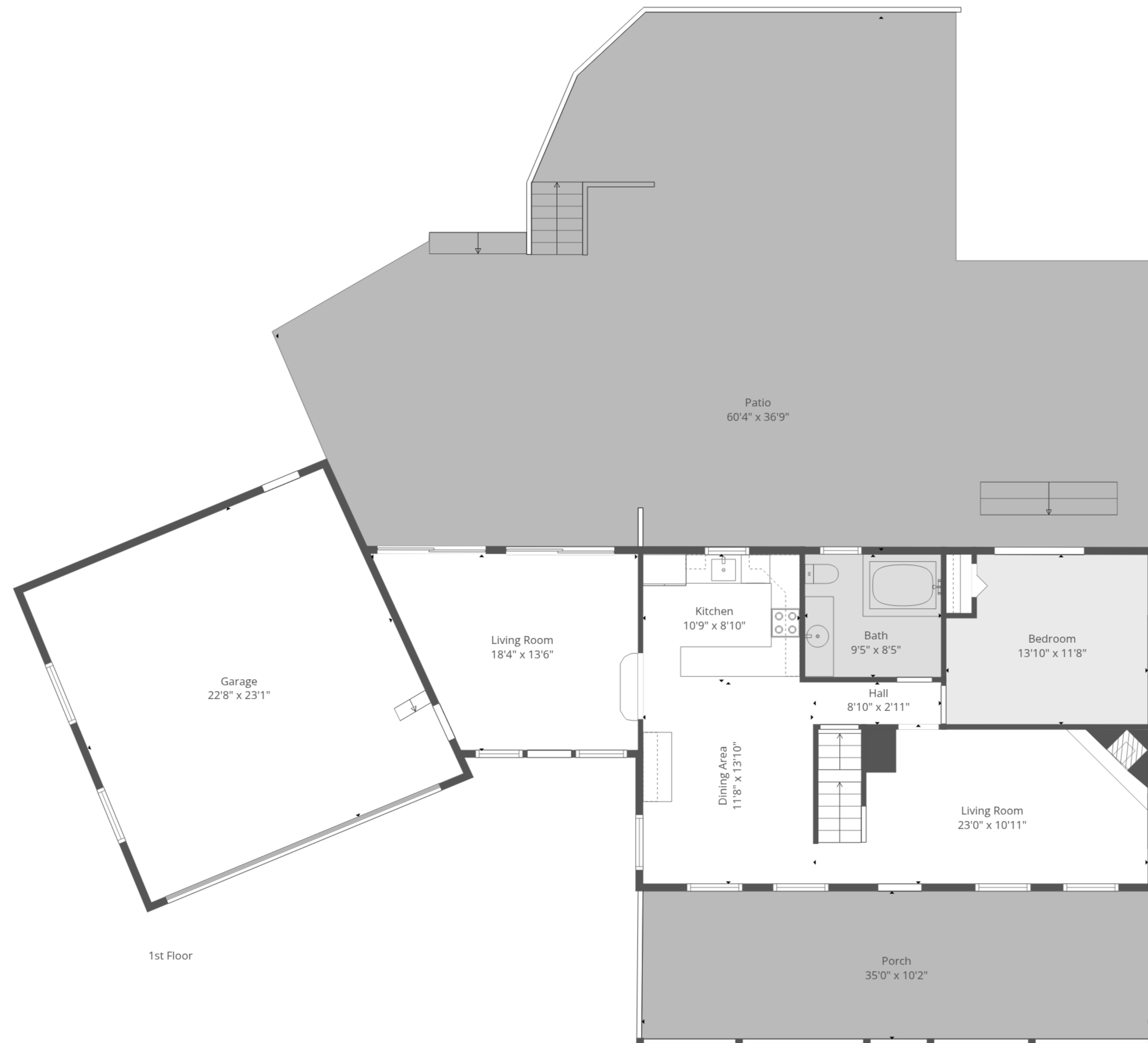


TOTAL: 2265 sq. ft

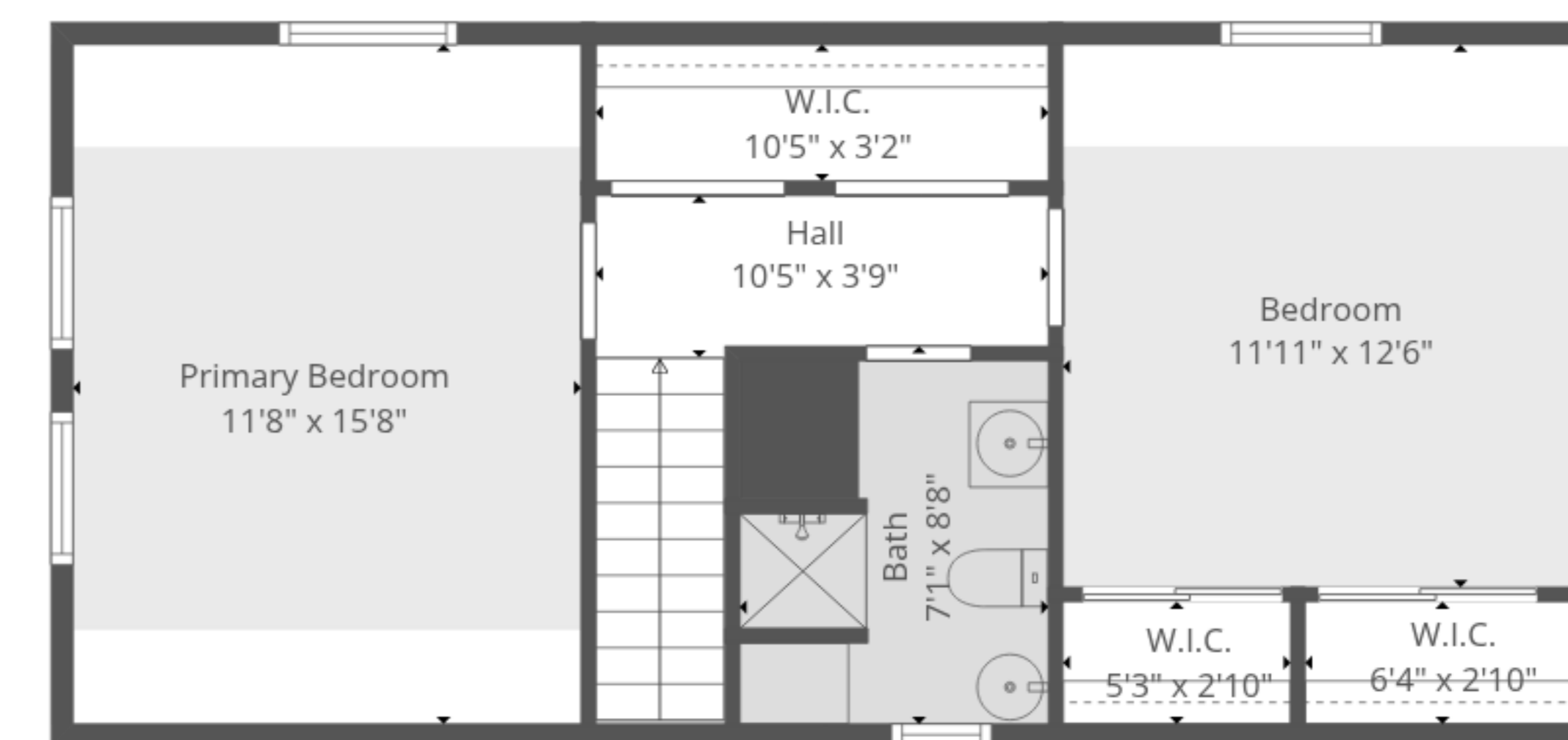
Basement: 806 sq. ft, 1st floor: 997 sq. ft, 2nd floor: 462 sq. ft

EXCLUDED AREAS: PORCH: 355 sq. ft, PATIO: 1599 sq. ft, GARAGE: 526 sq. ft,

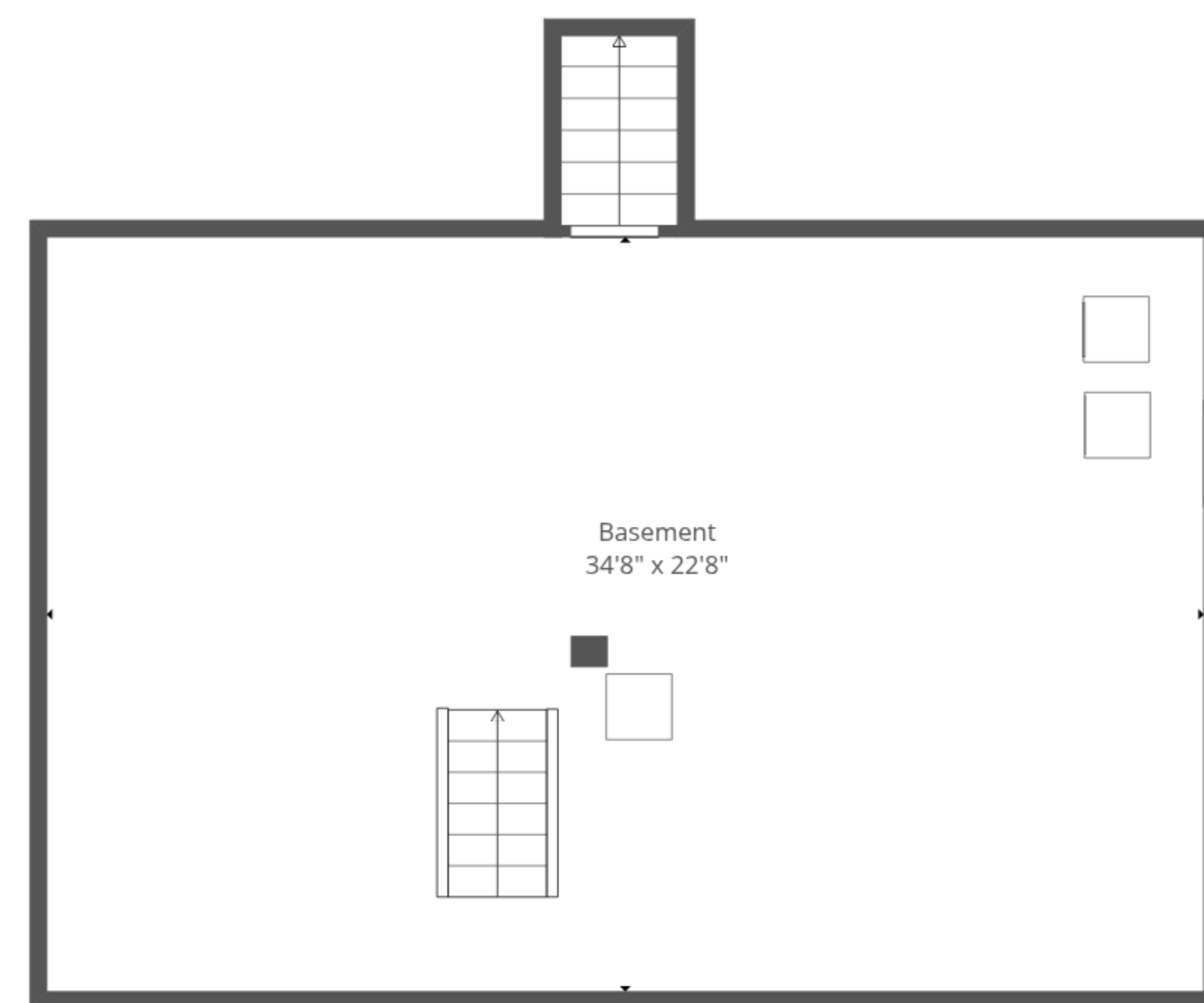
LOW CEILING: 81 sq. ft, WALLS: 229 sq. ft



1st Floor



2nd Floor



Basement

TOTAL: 2265 sq. ft
 Basement: 806 sq. ft, 1st floor: 997 sq. ft, 2nd floor: 462 sq. ft
 EXCLUDED AREAS: PORCH: 355 sq. ft, PATIO: 1599 sq. ft, GARAGE: 526 sq. ft,
 LOW CEILING: 81 sq. ft, WALLS: 229 sq. ft