

**Total Area: 1380 sq. ft**

1st Floor: 619 sq. ft, 2nd Floor: 761 sq. ft

Excluded: Walls: 88 sq. ft

### Property summary

 **2** Floors

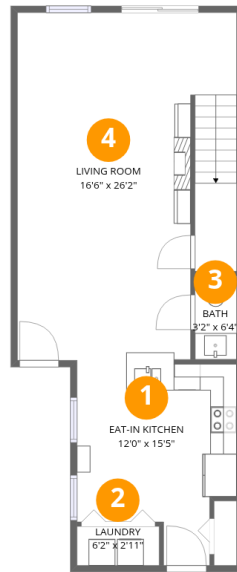
 **3** Bedrooms

 **2** Bathrooms

 **1** Half baths

Home data report

249 Whitland Wy, St. Augustine, FL, US

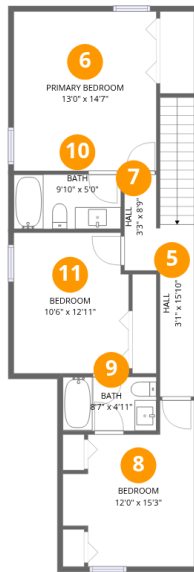


## Room dimensions

Floor 1

Total: 619 sqft Excluded: 0 sqft

#		Dimensions	sqft	Counted as living area
1	Eat-in Kitchen	12'0" x 15'5"	186 sq. ft	Yes
2	Laundry	6'2" x 2'11"	18 sq. ft	Yes
3	Bath	3'2" x 6'4"	20 sq. ft	Yes
4	Living Room	16'6" x 26'2"	433 sq. ft	Yes



## Room dimensions

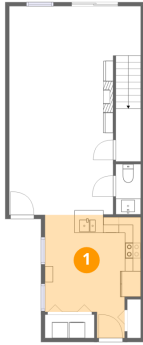
Floor 2

Total: 761 sqft Excluded: 0 sqft

#		Dimensions	sqft	Counted as living area
5	Hall	3'1" x 15'10"	49 sq. ft	Yes
6	Primary Bedroom	13'0" x 14'7"	190 sq. ft	Yes
7	Hall	3'3" x 8'9"	29 sq. ft	Yes
8	Bedroom	12'0" x 15'3"	183 sq. ft	Yes
9	Bath	8'7" x 4'11"	42 sq. ft	Yes
10	Bath	9'10" x 5'0"	49 sq. ft	Yes
11	Bedroom	10'6" x 12'11"	136 sq. ft	Yes

## 1 Floor 1 - Eat-in Kitchen

---

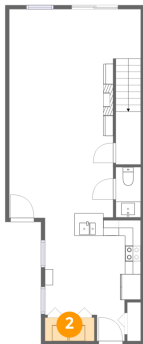


Dimensions: 12'0" x 15'5"  
Area: 186 sq. ft  
Counted as living area: Yes

Heated: Yes  
Finished: Yes  
Enclosed: Yes  
Contiguous: Yes  
Permitted: Yes  
Wet space: No  
Addition: No  
Conversion: No

## 2 Floor 1 - Laundry

---



Dimensions: 6'2" x 2'11"  
Area: 18 sq. ft  
Counted as living area: Yes

Heated: Yes  
Finished: Yes  
Enclosed: Yes  
Contiguous: Yes  
Permitted: Yes  
Wet space: No  
Addition: No  
Conversion: No

### 3 Floor 1 - Bath



Dimensions: 3'2" x 6'4"  
Area: 20 sq. ft  
Counted as living area: Yes

Heated: Yes  
Finished: Yes  
Enclosed: Yes  
Contiguous: Yes  
Permitted: Yes  
Wet space: Yes  
Addition: No  
Conversion: No

### 4 Floor 1 - Living Room



Dimensions: 16'6" x 26'2"  
Area: 433 sq. ft  
Counted as living area: Yes

Heated: Yes  
Finished: Yes  
Enclosed: Yes  
Contiguous: Yes  
Permitted: Yes  
Wet space: No  
Addition: No  
Conversion: No

### 5 Floor 2 - Hall



Dimensions: 3'1" x 15'10"  
Area: 49 sq. ft  
Counted as living area: Yes

Heated: Yes  
Finished: Yes  
Enclosed: Yes  
Contiguous: Yes  
Permitted: Yes  
Wet space: No  
Addition: No  
Conversion: No

## 6 Floor 2 - Primary Bedroom



Dimensions: 13'0" x 14'7"  
Area: 190 sq. ft  
Counted as living area: Yes

Heated: Yes  
Finished: Yes  
Enclosed: Yes  
Contiguous: Yes  
Permitted: Yes  
Wet space: No  
Addition: No  
Conversion: No

## 7 Floor 2 - Hall



Dimensions: 3'3" x 8'9"  
Area: 29 sq. ft  
Counted as living area: Yes

Heated: Yes  
Finished: Yes  
Enclosed: Yes  
Contiguous: Yes  
Permitted: Yes  
Wet space: No  
Addition: No  
Conversion: No

## 8 Floor 2 - Bedroom



Dimensions: 12'0" x 15'3"  
Area: 183 sq. ft  
Counted as living area: Yes

Heated: Yes  
Finished: Yes  
Enclosed: Yes  
Contiguous: Yes  
Permitted: Yes  
Wet space: No  
Addition: No  
Conversion: No

**9** Floor 2 - Bath



Dimensions: 8'7" x 4'11"  
Area: 42 sq. ft  
Counted as living area: Yes

Heated: Yes  
Finished: Yes  
Enclosed: Yes  
Contiguous: Yes  
Permitted: Yes  
Wet space: Yes  
Addition: No  
Conversion: No

**10** Floor 2 - Bath



Dimensions: 9'10" x 5'0"  
Area: 49 sq. ft  
Counted as living area: Yes

Heated: Yes  
Finished: Yes  
Enclosed: Yes  
Contiguous: Yes  
Permitted: Yes  
Wet space: Yes  
Addition: No  
Conversion: No

**11** Floor 2 - Bedroom



Dimensions: 10'6" x 12'11"  
Area: 136 sq. ft  
Counted as living area: Yes

Heated: Yes  
Finished: Yes  
Enclosed: Yes  
Contiguous: Yes  
Permitted: Yes  
Wet space: No  
Addition: No  
Conversion: No