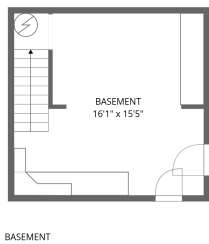


Home report

1005 South Pollard Street, Vinton, Roanoke County, Virginia,
United States, 24179




Total Area: 1447 sq. ft

Floor 1: 247 sq. ft, Floor 2: 1200 sq. ft

Excluded: Porch 116 sq. ft, Deck 163 sq. ft, Walls: 98 sq. ft

Property summary

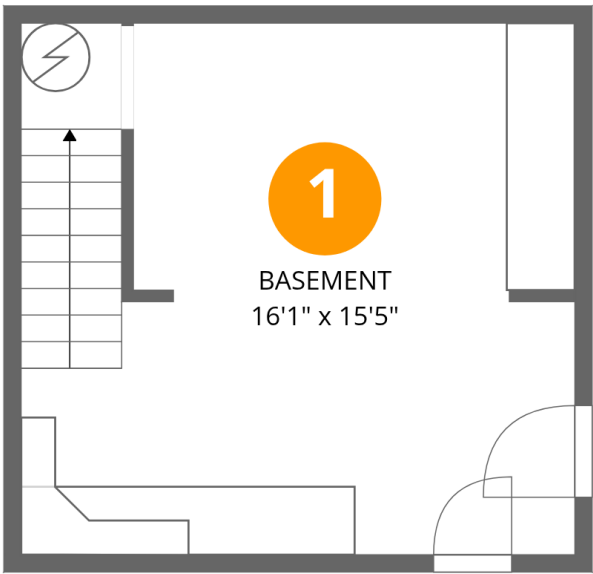
 **2** Floors

 **3** Bedrooms

 **2** Bathrooms

Home report

1005 South Pollard Street, Vinton, Roanoke County, Virginia,
United States, 24179



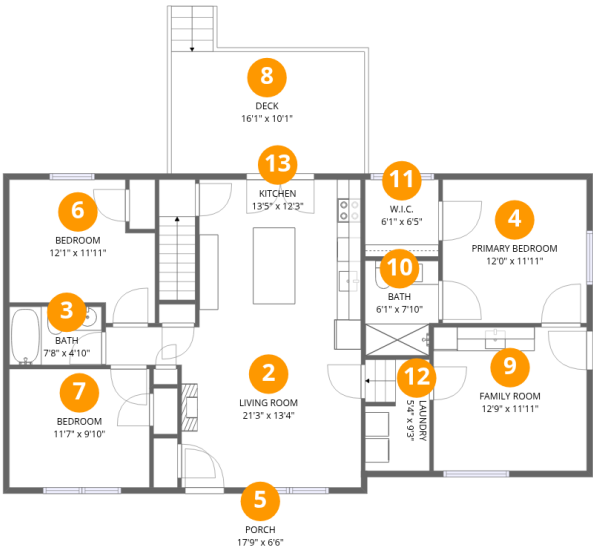
Room dimensions

Floor 1 Total:247sqft Excluded: 0sqft

#		Max Dimensions	sqft	Included
1	Basement	16'1" x 15'5"	245 sq. ft	Yes

Home report

1005 South Pollard Street, Vinton, Roanoke County, Virginia,
United States, 24179



Room dimensions

Floor 2

Total:1200sqft

Excluded: 279sqft

#		Max Dimensions	sqft	Included
2	Living Room	21'3" x 13'4"	218 sq. ft	Yes
3	Bath	7'8" x 4'10"	37 sq. ft	Yes
4	Primary Bedroom	12'0" x 11'11"	143 sq. ft	Yes
5	Porch	17'9" x 6'6"	116 sq. ft	No
6	Bedroom	12'1" x 11'11"	120 sq. ft	Yes
7	Bedroom	11'7" x 9'10"	115 sq. ft	Yes
8	Deck	16'1" x 10'1"	163 sq. ft	No
9	Family Room	12'9" x 11'11"	152 sq. ft	Yes
10	Bath	6'1" x 7'10"	46 sq. ft	Yes
11	W.I.C.	6'1" x 6'5"	39 sq. ft	Yes
12	Laundry	5'4" x 9'3"	49 sq. ft	Yes

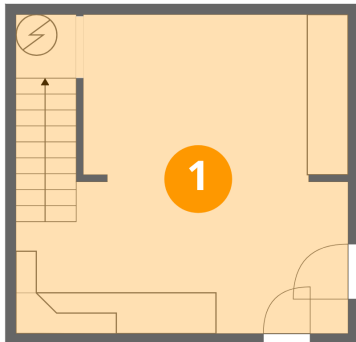
Home report

1005 South Pollard Street, Vinton, Roanoke County, Virginia,
United States, 24179

#		Max Dimensions	sqft	Included
13	Kitchen	13'5" x 12'3"	165 sq. ft	Yes

1005 South Pollard Street, Vinton, Roanoke County, Virginia,
United States, 24179

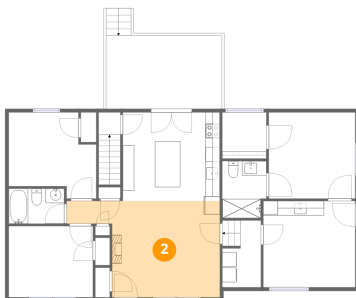
1 Floor 1 - Basement



Max Dimensions: 16'1" x 15'5"
Calculated Area: 245 sq. ft
Included: Yes

Heated: Yes
Finished: Yes
Enclosed: Yes
Contiguous: Yes
Permitted: Yes
Wet space: No
Addition: No
Conversion: No

2 Floor 2 - Living Room

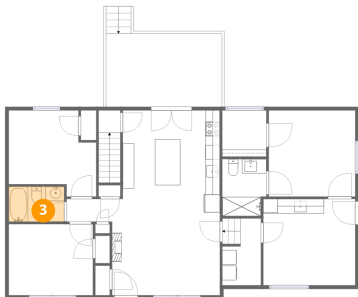


Max Dimensions: 21'3" x 13'4"
Calculated Area: 218 sq. ft
Included: Yes

Heated: Yes
Finished: Yes
Enclosed: Yes
Contiguous: Yes
Permitted: Yes
Wet space: No
Addition: No
Conversion: No

1005 South Pollard Street, Vinton, Roanoke County, Virginia,
United States, 24179

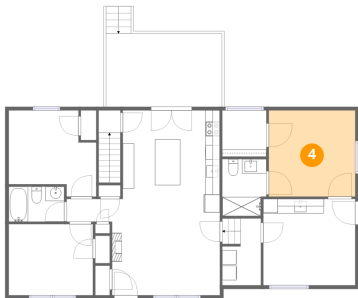
3 Floor 2 - Bath



Max Dimensions: 7'8" x 4'10"
Calculated Area: 37 sq. ft
Included: Yes

Heated: Yes
Finished: Yes
Enclosed: Yes
Contiguous: Yes
Permitted: Yes
Wet space: Yes
Addition: No
Conversion: No

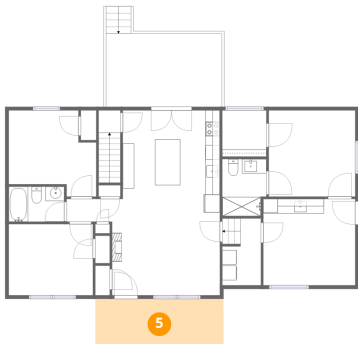
4 Floor 2 - Primary Bedroom



Max Dimensions: 12'0" x 11'11"
Calculated Area: 143 sq. ft
Included: Yes

Heated: Yes
Finished: Yes
Enclosed: Yes
Contiguous: Yes
Permitted: Yes
Wet space: No
Addition: No
Conversion: No

5 Floor 2 - Porch

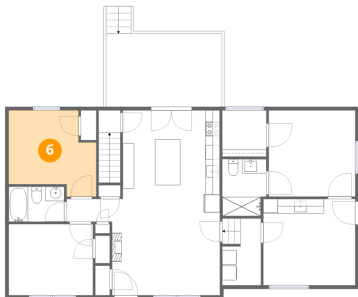


Max Dimensions: 17'9" x 6'6"
Calculated Area: 116 sq. ft
Included: No

Heated: No
Finished: No
Enclosed: No
Contiguous: Yes
Permitted: Yes
Wet space: No
Addition: No
Conversion: No

1005 South Pollard Street, Vinton, Roanoke County, Virginia,
United States, 24179

6 Floor 2 - Bedroom



Max Dimensions: 12'1" x 11'11"
Calculated Area: 120 sq. ft
Included: Yes

Heated: Yes
Finished: Yes
Enclosed: Yes
Contiguous: Yes
Permitted: Yes
Wet space: No
Addition: No
Conversion: No

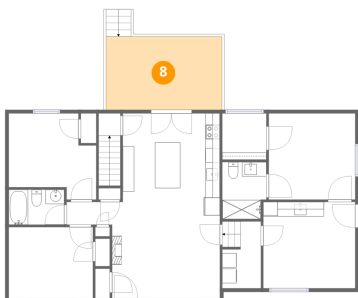
7 Floor 2 - Bedroom



Max Dimensions: 11'7" x 9'10"
Calculated Area: 115 sq. ft
Included: Yes

Heated: Yes
Finished: Yes
Enclosed: Yes
Contiguous: Yes
Permitted: Yes
Wet space: No
Addition: No
Conversion: No

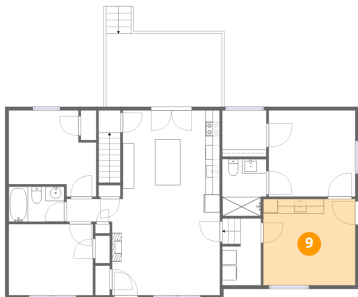
8 Floor 2 - Deck



Max Dimensions: 16'1" x 10'1"
Calculated Area: 163 sq. ft
Included: No

Heated: No
Finished: No
Enclosed: No
Contiguous: Yes
Permitted: Yes
Wet space: No
Addition: No
Conversion: No

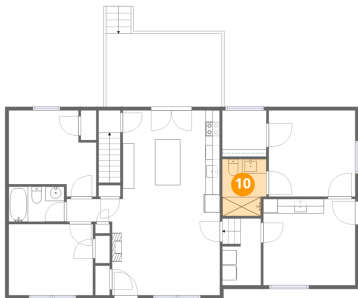
9 Floor 2 - Family Room



Max Dimensions: 12'9" x 11'11"
Calculated Area: 152 sq. ft
Included: Yes

Heated: Yes
Finished: Yes
Enclosed: Yes
Contiguous: Yes
Permitted: Yes
Wet space: No
Addition: No
Conversion: No

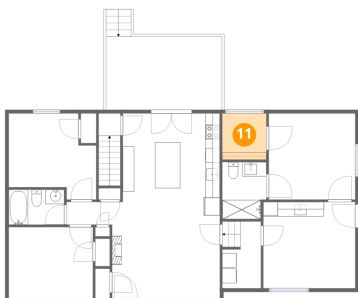
10 Floor 2 - Bath



Max Dimensions: 6'1" x 7'10"
Calculated Area: 46 sq. ft
Included: Yes

Heated: Yes
Finished: Yes
Enclosed: Yes
Contiguous: Yes
Permitted: Yes
Wet space: Yes
Addition: No
Conversion: No

11 Floor 2 - W.I.C.

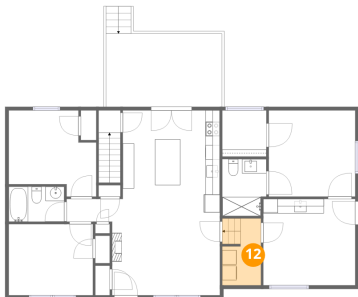


Max Dimensions: 6'1" x 6'5"
Calculated Area: 39 sq. ft
Included: Yes

Heated: Yes
Finished: Yes
Enclosed: Yes
Contiguous: Yes
Permitted: Yes
Wet space: No
Addition: No
Conversion: No

1005 South Pollard Street, Vinton, Roanoke County, Virginia,
United States, 24179

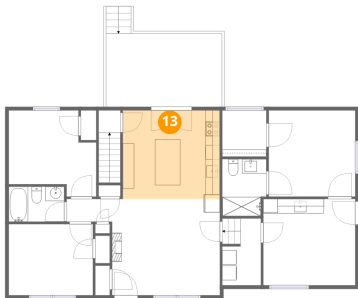
12 Floor 2 - Laundry



Max Dimensions: 5'4" x 9'3"
Calculated Area: 49 sq. ft
Included: Yes

Heated: Yes
Finished: Yes
Enclosed: Yes
Contiguous: Yes
Permitted: Yes
Wet space: No
Addition: No
Conversion: No

13 Floor 2 - Kitchen



Max Dimensions: 13'5" x 12'3"
Calculated Area: 165 sq. ft
Included: Yes

Heated: Yes
Finished: Yes
Enclosed: Yes
Contiguous: Yes
Permitted: Yes
Wet space: No
Addition: No
Conversion: No