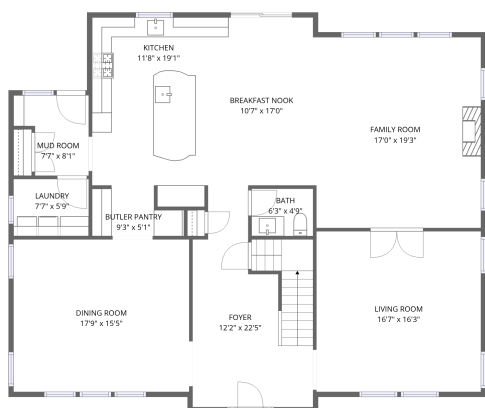
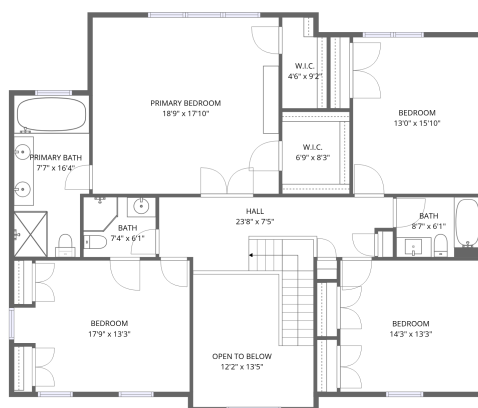


Home data report

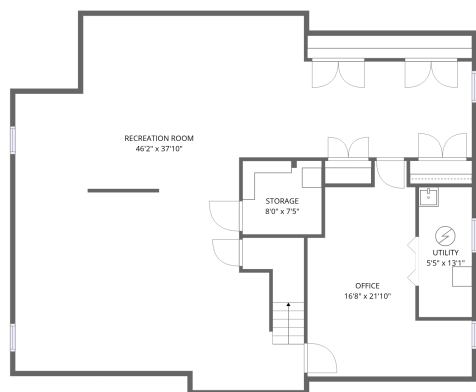
121 Harvard Avenue, Rockville Centre, Nassau County, New York, United States, 11570



1st floor



2nd floor



Basement

Total Area: 4753 sq. ft

Basement: 1471 sq. ft, 1st Floor: 1710 sq. ft, 2nd Floor: 1572 sq. ft

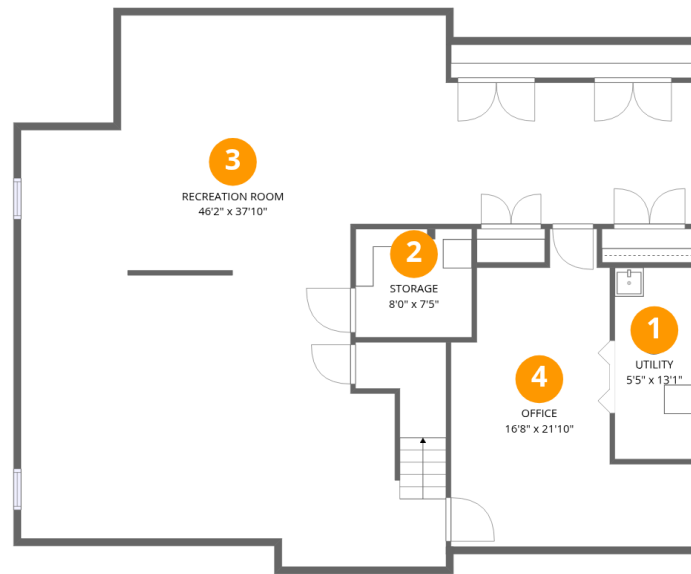
Excluded: Utility 71 sq. ft, Storage 59 sq. ft, Open to below 138 sq. ft, Walls: 260 sq. ft

Property summary



Home data report

121 Harvard Avenue, Rockville Centre, Nassau County, New York, United States, 11570



Room dimensions

Floor 1 Below grade

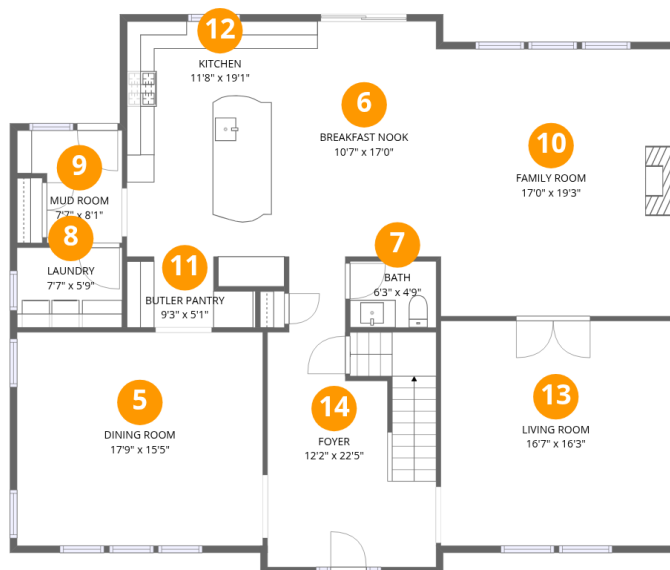
Total:1471sqft

Excluded: 130sqft

#		Dimensions	sqft	Counted as living area
1	Utility	5'5" x 13'1"	71 sq. ft	No
2	Storage	8'0" x 7'5"	59 sq. ft	No
3	Recreation Room	46'2" x 37'10"	1124 sq. ft	Yes
4	Office	16'8" x 21'10"	241 sq. ft	Yes

Home data report

121 Harvard Avenue, Rockville Centre, Nassau County, New York, United States, 11570



Room dimensions

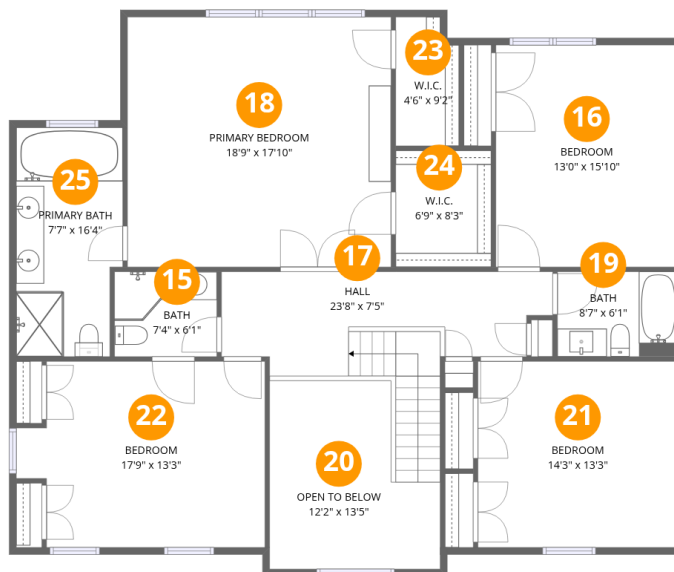
Floor 2

Total:1710sqft Excluded: 0sqft

#		Dimensions	sqft	Counted as living area
5	Dining Room	17'9" x 15'5"	274 sq. ft	Yes
6	Breakfast Nook	10'7" x 17'0"	180 sq. ft	Yes
7	Bath	6'3" x 4'9"	30 sq. ft	Yes
8	Laundry	7'7" x 5'9"	44 sq. ft	Yes
9	Mud Room	7'7" x 8'1"	51 sq. ft	Yes
10	Family Room	17'0" x 19'3"	326 sq. ft	Yes
11	Butler Pantry	9'3" x 5'1"	39 sq. ft	Yes
12	Kitchen	11'8" x 19'1"	209 sq. ft	Yes
13	Living Room	16'7" x 16'3"	270 sq. ft	Yes
14	Foyer	12'2" x 22'5"	225 sq. ft	Yes

Home data report

121 Harvard Avenue, Rockville Centre, Nassau County, New York, United States, 11570



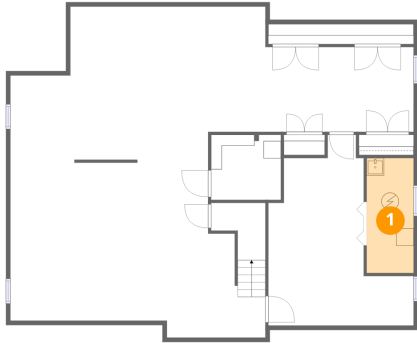
Room dimensions

Floor 3

Total:1572sqft Excluded: 138sqft

#		Dimensions	sqft	Counted as living area
15	Bath	7'4" x 6'1"	44 sq. ft	Yes
16	Bedroom	13'0" x 15'10"	206 sq. ft	Yes
17	Hall	23'8" x 7'5"	184 sq. ft	Yes
18	Primary Bedroom	18'9" x 17'10"	336 sq. ft	Yes
19	Bath	8'7" x 6'1"	52 sq. ft	Yes
20	Open To Below	12'2" x 13'5"	138 sq. ft	No
21	Bedroom	14'3" x 13'3"	189 sq. ft	Yes
22	Bedroom	17'9" x 13'3"	215 sq. ft	Yes
23	W.I.C.	4'6" x 9'2"	39 sq. ft	Yes
24	W.I.C.	6'9" x 8'3"	57 sq. ft	Yes
25	Primary Bath	7'7" x 16'4"	119 sq. ft	Yes

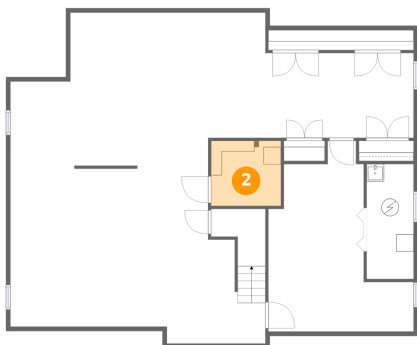
1 Floor 1 - Utility



Dimensions: 5'5" x 13'1"
Area: 71 sq. ft
Counted as living area: No

Heated: Yes
Finished: No
Enclosed: Yes
Contiguous: Yes
Permitted: Yes
Wet space: No
Addition: No
Conversion: No

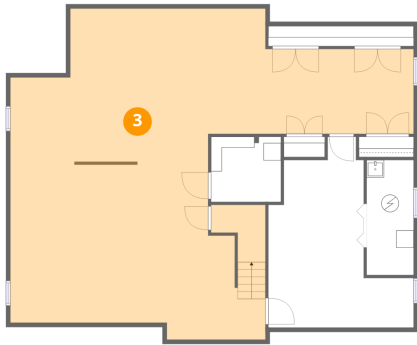
2 Floor 1 - Storage



Dimensions: 8'0" x 7'5"
Area: 59 sq. ft
Counted as living area: No

Heated: No
Finished: No
Enclosed: No
Contiguous: No
Permitted: Yes
Wet space: No
Addition: No
Conversion: No

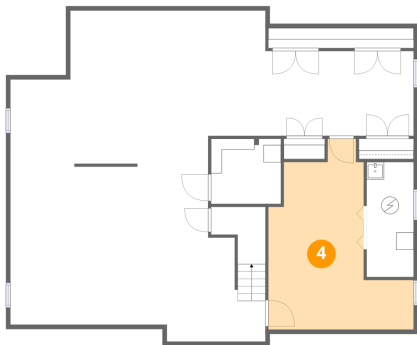
3 Floor 1 - Recreation Room



Dimensions: 46'2" x 37'10"
Area: 1124 sq. ft
Counted as living area: Yes

Heated: Yes
Finished: Yes
Enclosed: Yes
Contiguous: Yes
Permitted: Yes
Wet space: No
Addition: No
Conversion: No

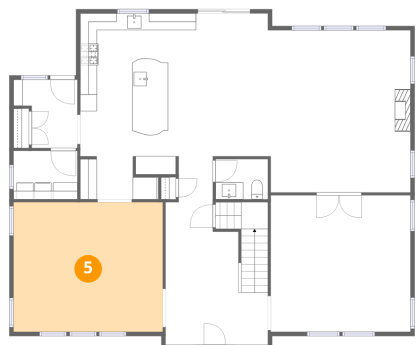
4 Floor 1 - Office



Dimensions: 16'8" x 21'10"
Area: 241 sq. ft
Counted as living area: Yes

Heated: Yes
Finished: Yes
Enclosed: Yes
Contiguous: Yes
Permitted: Yes
Wet space: No
Addition: No
Conversion: No

5 Floor 2 - Dining Room

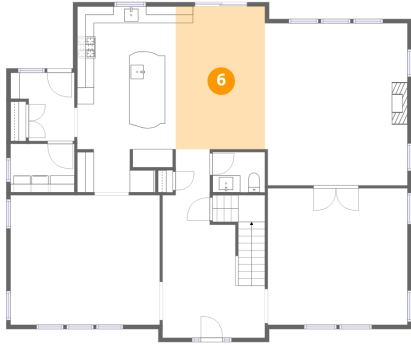


Dimensions: 17'9" x 15'5"
Area: 274 sq. ft
Counted as living area: Yes

Heated: Yes
Finished: Yes
Enclosed: Yes
Contiguous: Yes
Permitted: Yes
Wet space: No
Addition: No
Conversion: No

121 Harvard Avenue, Rockville Centre, Nassau County, New York, United States, 11570

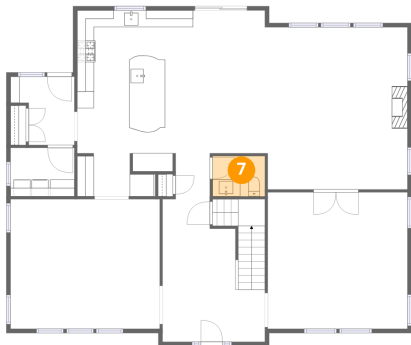
6 Floor 2 - Breakfast Nook



Dimensions: 10'7" x 17'0"
Area: 180 sq. ft
Counted as living area: Yes

Heated: Yes
Finished: Yes
Enclosed: Yes
Contiguous: Yes
Permitted: Yes
Wet space: No
Addition: No
Conversion: No

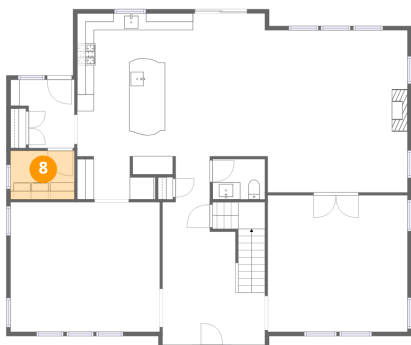
7 Floor 2 - Bath



Dimensions: 6'3" x 4'9"
Area: 30 sq. ft
Counted as living area: Yes

Heated: Yes
Finished: Yes
Enclosed: Yes
Contiguous: Yes
Permitted: Yes
Wet space: Yes
Addition: No
Conversion: No

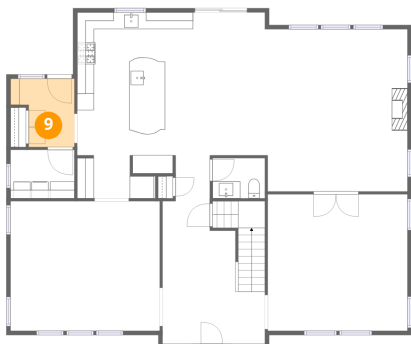
8 Floor 2 - Laundry



Dimensions: 7'7" x 5'9"
Area: 44 sq. ft
Counted as living area: Yes

Heated: Yes
Finished: Yes
Enclosed: Yes
Contiguous: Yes
Permitted: Yes
Wet space: No
Addition: No
Conversion: No

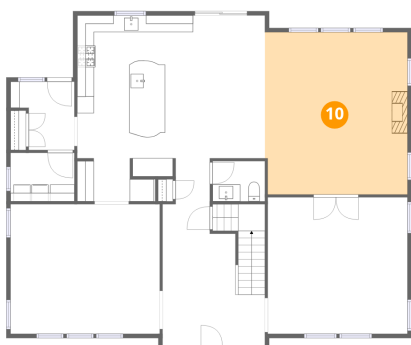
9 Floor 2 - Mud Room



Dimensions: 7'7" x 8'1"
Area: 51 sq. ft
Counted as living area: Yes

Heated: Yes
Finished: Yes
Enclosed: Yes
Contiguous: Yes
Permitted: Yes
Wet space: No
Addition: No
Conversion: No

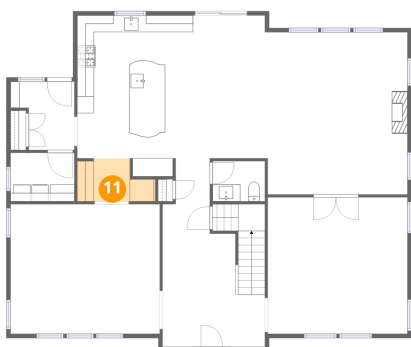
10 Floor 2 - Family Room



Dimensions: 17'0" x 19'3"
Area: 326 sq. ft
Counted as living area: Yes

Heated: Yes
Finished: Yes
Enclosed: Yes
Contiguous: Yes
Permitted: Yes
Wet space: No
Addition: No
Conversion: No

11 Floor 2 - Butler Pantry

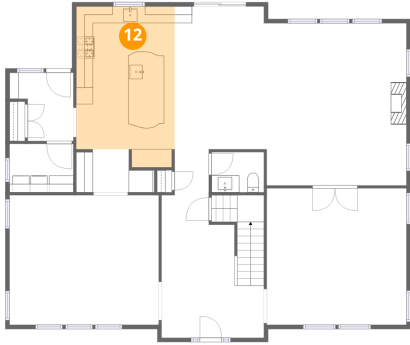


Dimensions: 9'3" x 5'1"
Area: 39 sq. ft
Counted as living area: Yes

Heated: Yes
Finished: Yes
Enclosed: Yes
Contiguous: Yes
Permitted: Yes
Wet space: No
Addition: No
Conversion: No

121 Harvard Avenue, Rockville Centre, Nassau County, New York, United States, 11570

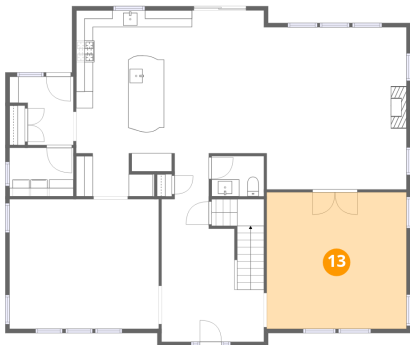
12 Floor 2 - Kitchen



Dimensions: 11'8" x 19'1"
Area: 209 sq. ft
Counted as living area: Yes

Heated: Yes
Finished: Yes
Enclosed: Yes
Contiguous: Yes
Permitted: Yes
Wet space: No
Addition: No
Conversion: No

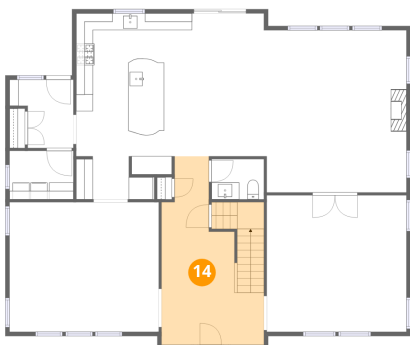
13 Floor 2 - Living Room



Dimensions: 16'7" x 16'3"
Area: 270 sq. ft
Counted as living area: Yes

Heated: Yes
Finished: Yes
Enclosed: Yes
Contiguous: Yes
Permitted: Yes
Wet space: No
Addition: No
Conversion: No

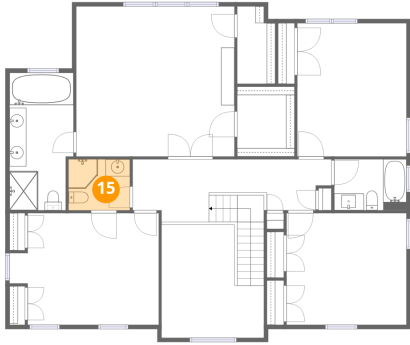
14 Floor 2 - Foyer



Dimensions: 12'2" x 22'5"
Area: 225 sq. ft
Counted as living area: Yes

Heated: Yes
Finished: Yes
Enclosed: Yes
Contiguous: Yes
Permitted: Yes
Wet space: No
Addition: No
Conversion: No

15 Floor 3 - Bath



Dimensions: 7'4" x 6'1"
Area: 44 sq. ft
Counted as living area: Yes

Heated: Yes
Finished: Yes
Enclosed: Yes
Contiguous: Yes
Permitted: Yes
Wet space: Yes
Addition: No
Conversion: No

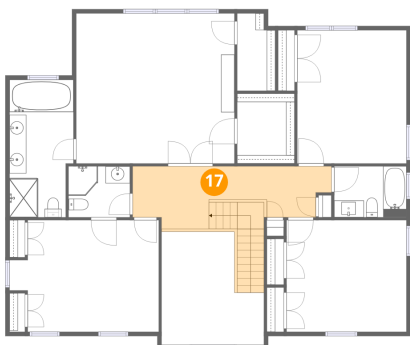
16 Floor 3 - Bedroom



Dimensions: 13'0" x 15'10"
Area: 206 sq. ft
Counted as living area: Yes

Heated: Yes
Finished: Yes
Enclosed: Yes
Contiguous: Yes
Permitted: Yes
Wet space: No
Addition: No
Conversion: No

17 Floor 3 - Hall

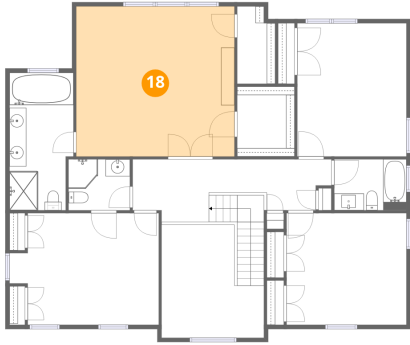


Dimensions: 23'8" x 7'5"
Area: 184 sq. ft
Counted as living area: Yes

Heated: Yes
Finished: Yes
Enclosed: Yes
Contiguous: Yes
Permitted: Yes
Wet space: No
Addition: No
Conversion: No

121 Harvard Avenue, Rockville Centre, Nassau County, New York, United States, 11570

18 Floor 3 - Primary Bedroom



Dimensions: 18'9" x 17'10"
Area: 336 sq. ft
Counted as living area: Yes

Heated: Yes
Finished: Yes
Enclosed: Yes
Contiguous: Yes
Permitted: Yes
Wet space: No
Addition: No
Conversion: No

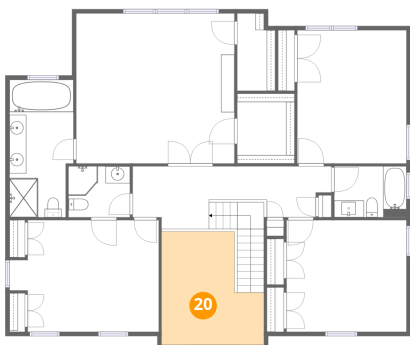
19 Floor 3 - Bath



Dimensions: 8'7" x 6'1"
Area: 52 sq. ft
Counted as living area: Yes

Heated: Yes
Finished: Yes
Enclosed: Yes
Contiguous: Yes
Permitted: Yes
Wet space: Yes
Addition: No
Conversion: No

20 Floor 3 - Open To Below



Dimensions: 12'2" x 13'5"
Area: 138 sq. ft
Counted as living area: No

Heated: No
Finished: No
Enclosed: No
Contiguous: Yes
Permitted: No
Wet space: No
Addition: No
Conversion: No

21 Floor 3 - Bedroom



Dimensions: 14'3" x 13'3"
Area: 189 sq. ft
Counted as living area: Yes

Heated: Yes
Finished: Yes
Enclosed: Yes
Contiguous: Yes
Permitted: Yes
Wet space: No
Addition: No
Conversion: No

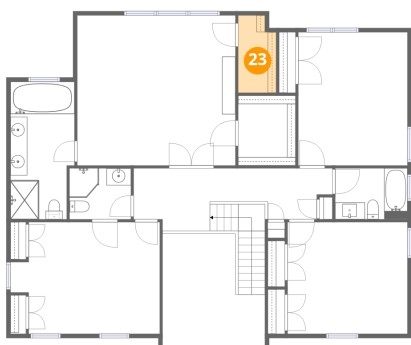
22 Floor 3 - Bedroom



Dimensions: 17'9" x 13'3"
Area: 215 sq. ft
Counted as living area: Yes

Heated: Yes
Finished: Yes
Enclosed: Yes
Contiguous: Yes
Permitted: Yes
Wet space: No
Addition: No
Conversion: No

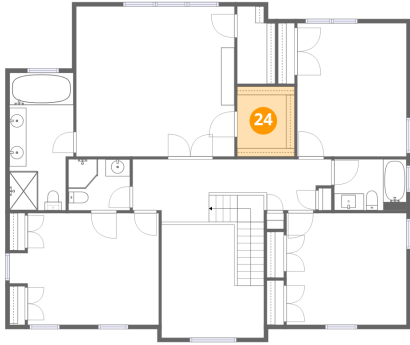
23 Floor 3 - W.I.C.



Dimensions: 4'6" x 9'2"
Area: 39 sq. ft
Counted as living area: Yes

Heated: Yes
Finished: Yes
Enclosed: Yes
Contiguous: Yes
Permitted: Yes
Wet space: No
Addition: No
Conversion: No

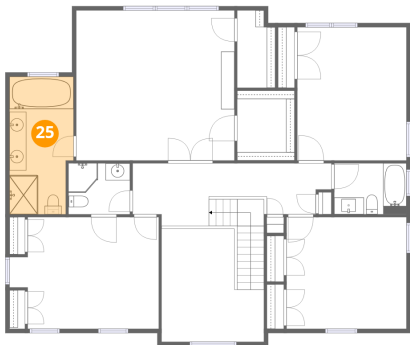
24 Floor 3 - W.I.C.



Dimensions: 6'9" x 8'3"
Area: 57 sq. ft
Counted as living area: Yes

Heated: Yes
Finished: Yes
Enclosed: Yes
Contiguous: Yes
Permitted: Yes
Wet space: No
Addition: No
Conversion: No

25 Floor 3 - Primary Bath



Dimensions: 7'7" x 16'4"
Area: 119 sq. ft
Counted as living area: Yes

Heated: Yes
Finished: Yes
Enclosed: Yes
Contiguous: Yes
Permitted: Yes
Wet space: Yes
Addition: No
Conversion: No