




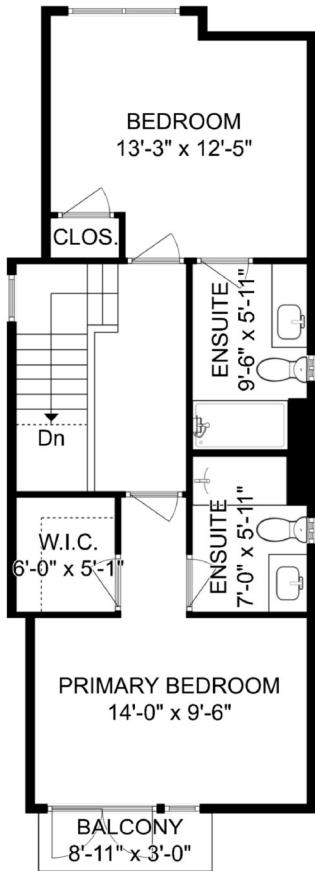
210 5th Street W, Lower Lonsdale North Vancouver

INTERIOR LIVING SPACE	(sq.ft.)
Upper Floor	630
Main Floor	598
Lower Floor	697
Total Area	1,925

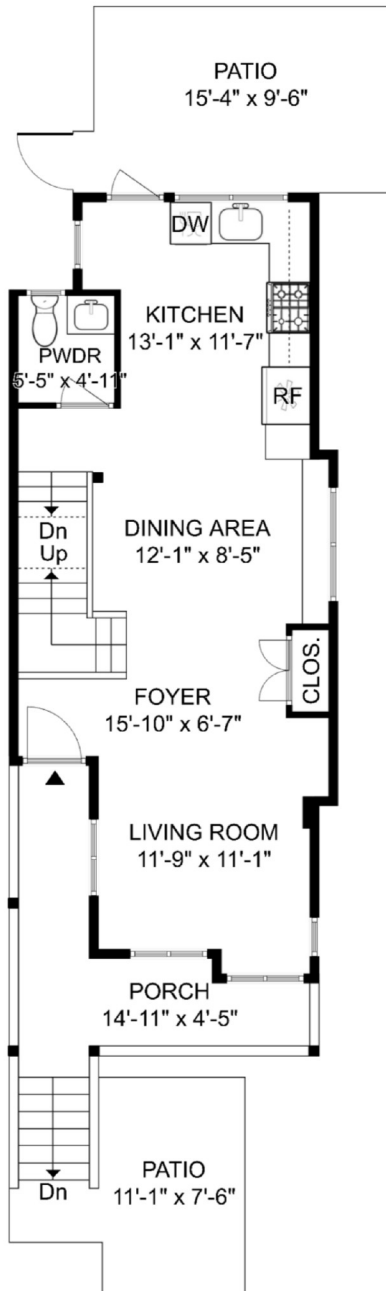
AUXILIARY	
Balcony	27
Porch	101
Patio Total	245
Garage	163
Combined Total	2,461

 3 bed
  3½ bath
  1 parking

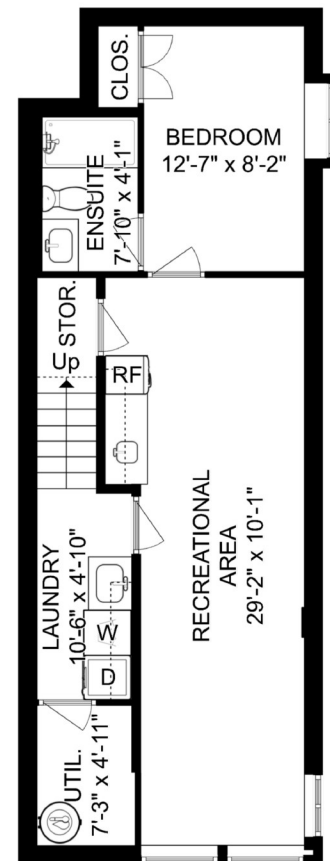
UPPER FLOOR
630 sq.ft. | Ceiling Height: 8'-0"



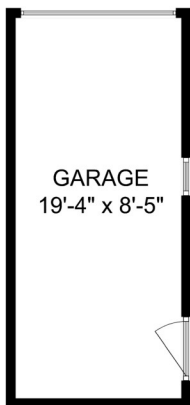
MAIN FLOOR
595 sq.ft. | Ceiling Height: 9'-0"



LOWER FLOOR
697 sq.ft. | Ceiling Height: 8'-0"



GARAGE
163 sq.ft. | Ceiling Height: 8'-0"



The floor plan is not suitable for architectural/construction and is covered under E&O. All right reserved for Virtualized Studio. User shall not publish and distribute such material and/or incorporate it in other works in any form.

