

Home data report

162 Tsuhdatsi Way, Burton Mill, Tellico Village, Loudon, Loudon County, Tennessee, United States, 37774



Total Area: 2471 sq. ft
1st Floor: 1949 sq. ft, 2nd Floor: 522 sq. ft
Excluded: Garage 451 sq. ft, Low ceiling 72 sq. ft, Attic 108 sq. ft, Walls: 220 sq. ft

Property summary

 **2** Floors

 **4** Bedrooms

 **3** Bathrooms

Home data report

**162 Tsuhdatsi Way, Burton Mill, Tellico Village, Loudon, Loudon
County, Tennessee, United States, 37774**



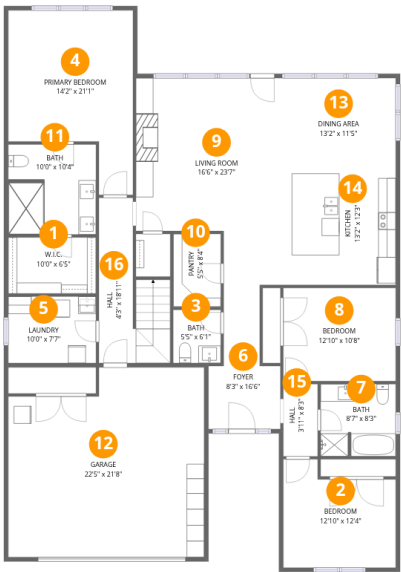
1
Half baths



1
Garages

Home data report

162 Tsuhdatsi Way, Burton Mill, Tellico Village, Loudon, Loudon County, Tennessee, United States, 37774



Room dimensions

Floor 1

Total:1949sqft Excluded: 451sqft

#		Dimensions	sqft	Counted as living area
1	W.I.C.	10'0" x 6'5"	64 sq. ft	Yes
2	Bedroom	12'10" x 12'4"	159 sq. ft	Yes
3	Bath	5'5" x 6'1"	33 sq. ft	Yes
4	Primary Bedroom	14'2" x 21'1"	299 sq. ft	Yes
5	Laundry	10'0" x 7'7"	76 sq. ft	Yes
6	Foyer	8'3" x 16'6"	135 sq. ft	Yes
7	Bath	8'7" x 8'3"	71 sq. ft	Yes
8	Bedroom	12'10" x 10'8"	137 sq. ft	Yes
9	Living Room	16'6" x 23'7"	390 sq. ft	Yes
10	Pantry	5'5" x 8'4"	45 sq. ft	Yes
11	Bath	10'0" x 10'4"	103 sq. ft	Yes

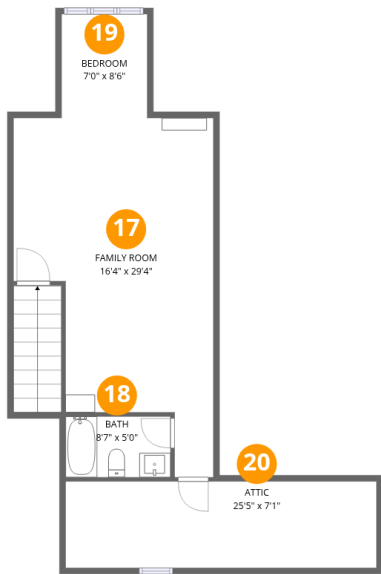
Home data report

162 Tsuhdatsi Way, Burton Mill, Tellico Village, Loudon, Loudon County, Tennessee, United States, 37774

#		Dimensions	sqft	Counted as living area
12	Garage	22'5" x 21'8"	486 sq. ft	No
13	Dining Area	13'2" x 11'5"	150 sq. ft	Yes
14	Kitchen	13'2" x 12'3"	161 sq. ft	Yes
15	Hall	3'11" x 8'3"	32 sq. ft	Yes
16	Hall	4'3" x 18'11"	80 sq. ft	Yes

Home data report

162 Tsuhdatsi Way, Burton Mill, Tellico Village, Loudon, Loudon County, Tennessee, United States, 37774



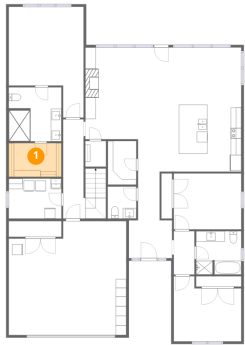
Room dimensions

Floor 2 Total:522sqft Excluded: 180sqft

#		Dimensions	sqft	Counted as living area
17	Family Room	16'4" x 29'4"	479 sq. ft	Yes
18	Bath	8'7" x 5'0"	43 sq. ft	Yes
19	Bedroom	7'0" x 8'6"	59 sq. ft	Yes
20	Attic	25'5" x 7'1"	180 sq. ft	No

162 Tsuhdatsi Way, Burton Mill, Tellico Village, Loudon, Loudon County, Tennessee, United States, 37774

1 Floor 1 - W.I.C.



Dimensions: 10'0" x 6'5"
Area: 64 sq. ft
Counted as living area: Yes

Heated: Yes
Finished: Yes
Enclosed: Yes
Contiguous: Yes
Permitted: Yes
Wet space: No
Addition: No
Conversion: No

2 Floor 1 - Bedroom

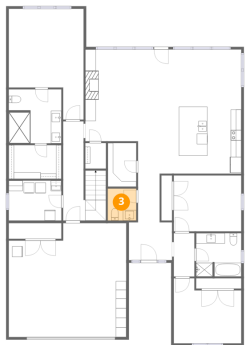


Dimensions: 12'10" x 12'4"
Area: 159 sq. ft
Counted as living area: Yes

Heated: Yes
Finished: Yes
Enclosed: Yes
Contiguous: Yes
Permitted: Yes
Wet space: No
Addition: No
Conversion: No

162 Tsuhdatsi Way, Burton Mill, Tellico Village, Loudon, Loudon County, Tennessee, United States, 37774

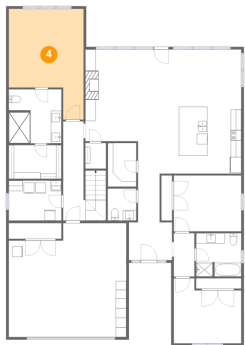
3 Floor 1 - Bath



Dimensions: 5'5" x 6'1"
Area: 33 sq. ft
Counted as living area: Yes

Heated: Yes
Finished: Yes
Enclosed: Yes
Contiguous: Yes
Permitted: Yes
Wet space: Yes
Addition: No
Conversion: No

4 Floor 1 - Primary Bedroom



Dimensions: 14'2" x 21'1"
Area: 299 sq. ft
Counted as living area: Yes

Heated: Yes
Finished: Yes
Enclosed: Yes
Contiguous: Yes
Permitted: Yes
Wet space: No
Addition: No
Conversion: No

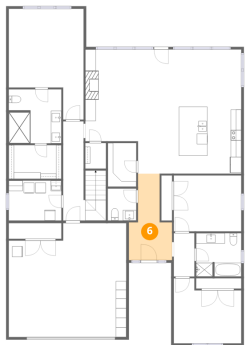
5 Floor 1 - Laundry



Dimensions: 10'0" x 7'7"
Area: 76 sq. ft
Counted as living area: Yes

Heated: Yes
Finished: Yes
Enclosed: Yes
Contiguous: Yes
Permitted: Yes
Wet space: No
Addition: No
Conversion: No

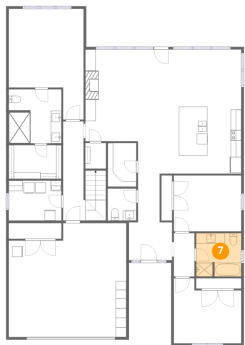
6 Floor 1 - Foyer



Dimensions: 8'3" x 16'6"
Area: 135 sq. ft
Counted as living area: Yes

Heated: Yes
Finished: Yes
Enclosed: Yes
Contiguous: Yes
Permitted: Yes
Wet space: No
Addition: No
Conversion: No

7 Floor 1 - Bath



Dimensions: 8'7" x 8'3"
Area: 71 sq. ft
Counted as living area: Yes

Heated: Yes
Finished: Yes
Enclosed: Yes
Contiguous: Yes
Permitted: Yes
Wet space: Yes
Addition: No
Conversion: No

8 Floor 1 - Bedroom

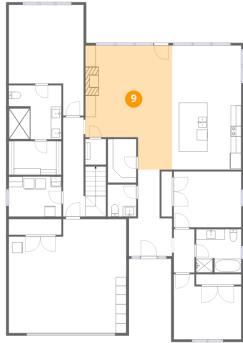


Dimensions: 12'10" x 10'8"
Area: 137 sq. ft
Counted as living area: Yes

Heated: Yes
Finished: Yes
Enclosed: Yes
Contiguous: Yes
Permitted: Yes
Wet space: No
Addition: No
Conversion: No

162 Tsuhdatsi Way, Burton Mill, Tellico Village, Loudon, Loudon County, Tennessee, United States, 37774

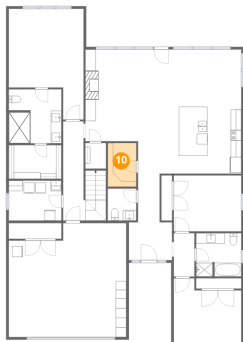
9 Floor 1 - Living Room



Dimensions: 16'6" x 23'7"
Area: 390 sq. ft
Counted as living area: Yes

Heated: Yes
Finished: Yes
Enclosed: Yes
Contiguous: Yes
Permitted: Yes
Wet space: No
Addition: No
Conversion: No

10 Floor 1 - Pantry



Dimensions: 5'5" x 8'4"
Area: 45 sq. ft
Counted as living area: Yes

Heated: Yes
Finished: Yes
Enclosed: Yes
Contiguous: Yes
Permitted: Yes
Wet space: No
Addition: No
Conversion: No

11 Floor 1 - Bath

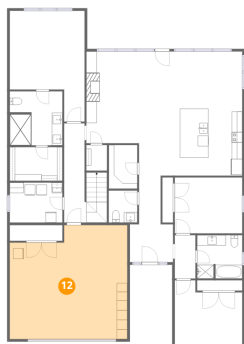


Dimensions: 10'0" x 10'4"
Area: 103 sq. ft
Counted as living area: Yes

Heated: Yes
Finished: Yes
Enclosed: Yes
Contiguous: Yes
Permitted: Yes
Wet space: Yes
Addition: No
Conversion: No

162 Tsuhdatsi Way, Burton Mill, Tellico Village, Loudon, Loudon County, Tennessee, United States, 37774

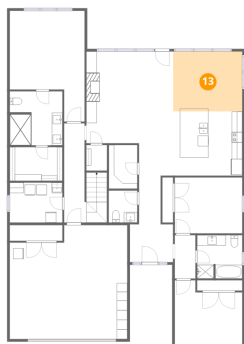
12 Floor 1 - Garage



Dimensions: 22'5" x 21'8"
Area: 486 sq. ft
Counted as living area: No

Heated: No
Finished: No
Enclosed: Yes
Contiguous: Yes
Permitted: Yes
Wet space: No
Addition: No
Conversion: No

13 Floor 1 - Dining Area



Dimensions: 13'2" x 11'5"
Area: 150 sq. ft
Counted as living area: Yes

Heated: Yes
Finished: Yes
Enclosed: Yes
Contiguous: Yes
Permitted: Yes
Wet space: No
Addition: No
Conversion: No

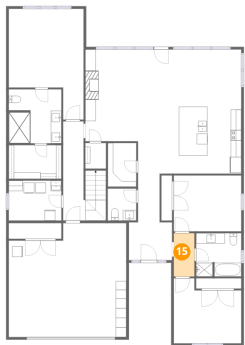
14 Floor 1 - Kitchen



Dimensions: 13'2" x 12'3"
Area: 161 sq. ft
Counted as living area: Yes

Heated: Yes
Finished: Yes
Enclosed: Yes
Contiguous: Yes
Permitted: Yes
Wet space: No
Addition: No
Conversion: No

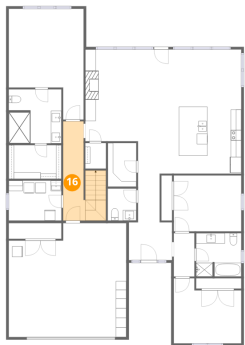
15 Floor 1 - Hall



Dimensions: 3'11" x 8'3"
Area: 32 sq. ft
Counted as living area: Yes

Heated: Yes
Finished: Yes
Enclosed: Yes
Contiguous: Yes
Permitted: Yes
Wet space: No
Addition: No
Conversion: No

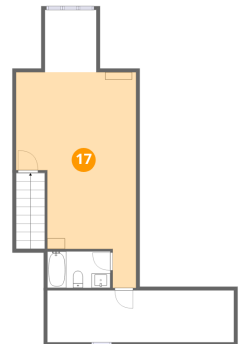
16 Floor 1 - Hall



Dimensions: 4'3" x 18'11"
Area: 80 sq. ft
Counted as living area: Yes

Heated: Yes
Finished: Yes
Enclosed: Yes
Contiguous: Yes
Permitted: Yes
Wet space: No
Addition: No
Conversion: No

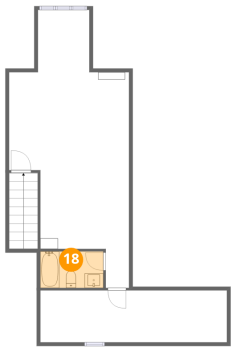
17 Floor 2 - Family Room



Dimensions: 16'4" x 29'4"
Area: 479 sq. ft
Counted as living area: Yes

Heated: Yes
Finished: Yes
Enclosed: Yes
Contiguous: Yes
Permitted: Yes
Wet space: No
Addition: No
Conversion: No

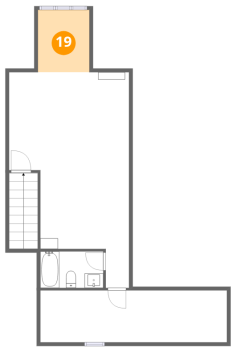
18 Floor 2 - Bath



Dimensions: 8'7" x 5'0"
Area: 43 sq. ft
Counted as living area: Yes

Heated: Yes
Finished: Yes
Enclosed: Yes
Contiguous: Yes
Permitted: Yes
Wet space: Yes
Addition: No
Conversion: No

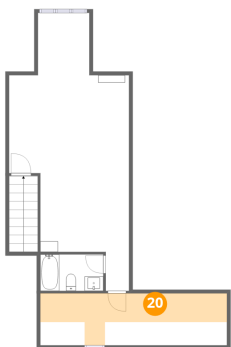
19 Floor 2 - Bedroom



Dimensions: 7'0" x 8'6"
Area: 59 sq. ft
Counted as living area: Yes

Heated: Yes
Finished: Yes
Enclosed: Yes
Contiguous: Yes
Permitted: Yes
Wet space: No
Addition: No
Conversion: No

20 Floor 2 - Attic



Dimensions: 25'5" x 7'1"
Area: 180 sq. ft
Counted as living area: No

Heated: No
Finished: No
Enclosed: Yes
Contiguous: Yes
Permitted: Yes
Wet space: No
Addition: No
Conversion: No