

Home data report

1824 Mapleridge Dr, Peterborough, ON, CA



Total Area: 1680 sq. ft

1st Floor: 328 sq. ft, 2nd Floor: 333 sq. ft, 3rd Floor: 1019 sq. ft

Excluded: Garage 452 sq. ft, Basement 228 sq. ft, Walls: 192 sq. ft

Property summary

 **3** Floors

 **3** Bedrooms

 **1** Bathrooms

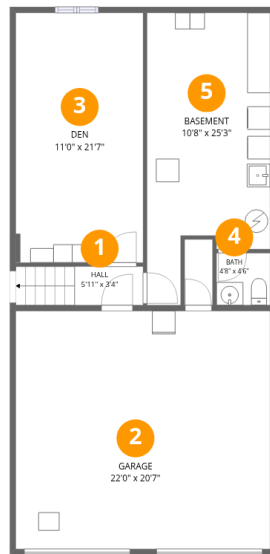
Home data report

1824 Mapleridge Dr, Peterborough, ON, CA

 **1**
Half baths

 **1**
Garages

1824 Mapleridge Dr, Peterborough, ON, CA



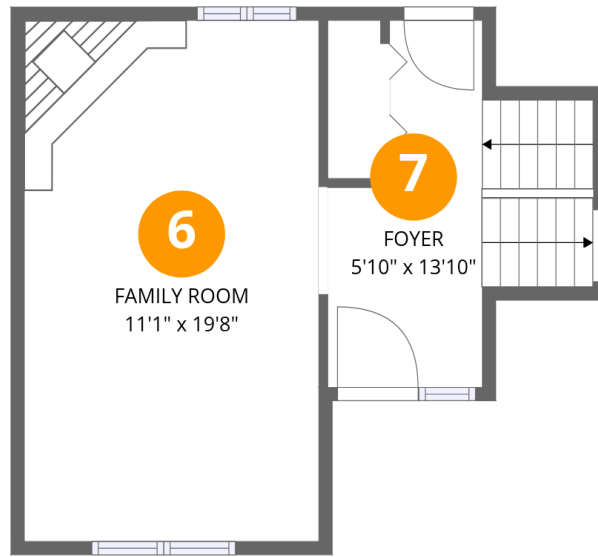
Room dimensions

Floor 1

Total: 328 sqft

Excluded: 680 sqft

#		Dimensions	sqft	Counted as living area
1	Hall	5'11" x 3'4"	37 sq. ft	Yes
2	Garage	22'0" x 20'7"	452 sq. ft	No
3	Den	11'0" x 21'7"	238 sq. ft	Yes
4	Bath	4'8" x 4'6"	21 sq. ft	Yes
5	Basement	10'8" x 25'3"	228 sq. ft	No



Room dimensions

Floor 2

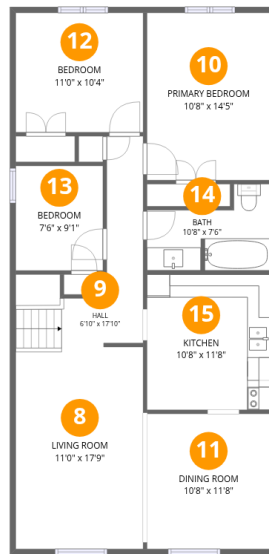
Total: 333 sqft

Excluded: 0 sqft

#		Dimensions	sqft	Counted as living area
6	Family Room	11'1" x 19'8"	218 sq. ft	Yes
7	Foyer	5'10" x 13'10"	96 sq. ft	Yes

Home data report

1824 Mapleridge Dr, Peterborough, ON, CA



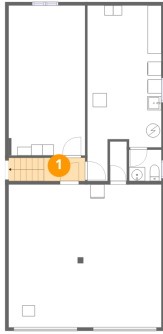
Room dimensions

Floor 3

Total: 1019 sqft Excluded: 0 sqft

#		Dimensions	sqft	Counted as living area
8	Living Room	11'0" x 17'9"	195 sq. ft	Yes
9	Hall	6'10" x 17'10"	95 sq. ft	Yes
10	Primary Bedroom	10'8" x 14'5"	154 sq. ft	Yes
11	Dining Room	10'8" x 11'8"	124 sq. ft	Yes
12	Bedroom	11'0" x 10'4"	114 sq. ft	Yes
13	Bedroom	7'6" x 9'1"	68 sq. ft	Yes
14	Bath	10'8" x 7'6"	62 sq. ft	Yes
15	Kitchen	10'8" x 11'8"	125 sq. ft	Yes

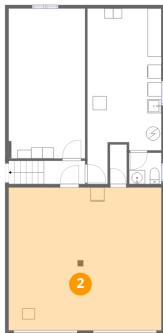
1 Floor 1 - Hall



Dimensions: 5'11" x 3'4"
Area: 37 sq. ft
Counted as living area: No

Heated: Yes
Finished: Yes
Enclosed: Yes
Contiguous: No
Permitted: Yes
Wet space: No
Addition: No
Conversion: No

2 Floor 1 - Garage



Dimensions: 22'0" x 20'7"
Area: 452 sq. ft
Counted as living area: No

Heated: No
Finished: No
Enclosed: Yes
Contiguous: Yes
Permitted: Yes
Wet space: No
Addition: No
Conversion: No

3 Floor 1 - Den



Dimensions: 11'0" x 21'7"
Area: 238 sq. ft
Counted as living area: No

Heated: Yes
Finished: Yes
Enclosed: Yes
Contiguous: No
Permitted: Yes
Wet space: No
Addition: No
Conversion: No

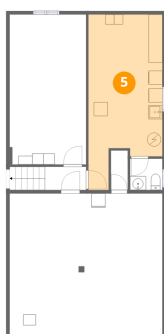
4 Floor 1 - Bath



Dimensions: 4'8" x 4'6"
Area: 21 sq. ft
Counted as living area: No

Heated: Yes
Finished: Yes
Enclosed: Yes
Contiguous: No
Permitted: Yes
Wet space: Yes
Addition: No
Conversion: No

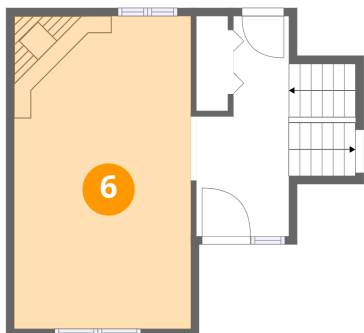
5 Floor 1 - Basement



Dimensions: 10'8" x 25'3"
Area: 228 sq. ft
Counted as living area: No

Heated: Yes
Finished: No
Enclosed: Yes
Contiguous: Yes
Permitted: Yes
Wet space: No
Addition: No
Conversion: No

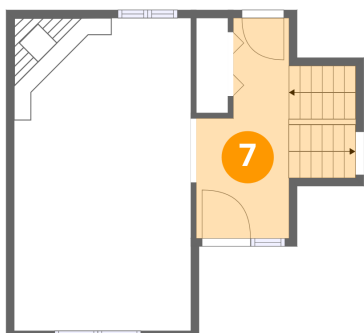
6 Floor 2 - Family Room



Dimensions: 11'1" x 19'8"
Area: 218 sq. ft
Counted as living area: Yes

Heated: Yes
Finished: Yes
Enclosed: Yes
Contiguous: Yes
Permitted: Yes
Wet space: No
Addition: No
Conversion: No

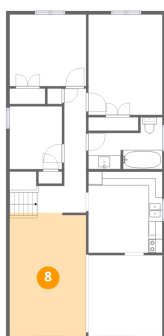
7 Floor 2 - Foyer



Dimensions: 5'10" x 13'10"
Area: 96 sq. ft
Counted as living area: Yes

Heated: Yes
Finished: Yes
Enclosed: Yes
Contiguous: Yes
Permitted: Yes
Wet space: No
Addition: No
Conversion: No

8 Floor 3 - Living Room



Dimensions: 11'0" x 17'9"
Area: 195 sq. ft
Counted as living area: Yes

Heated: Yes
Finished: Yes
Enclosed: Yes
Contiguous: Yes
Permitted: Yes
Wet space: No
Addition: No
Conversion: No

9 Floor 3 - Hall



Dimensions: 6'10" x 17'10"
Area: 95 sq. ft
Counted as living area: Yes

Heated: Yes
Finished: Yes
Enclosed: Yes
Contiguous: Yes
Permitted: Yes
Wet space: No
Addition: No
Conversion: No

10 Floor 3 - Primary Bedroom



Dimensions: 10'8" x 14'5"
Area: 154 sq. ft
Counted as living area: Yes

Heated: Yes
Finished: Yes
Enclosed: Yes
Contiguous: Yes
Permitted: Yes
Wet space: No
Addition: No
Conversion: No

11 Floor 3 - Dining Room



Dimensions: 10'8" x 11'8"
Area: 124 sq. ft
Counted as living area: Yes

Heated: Yes
Finished: Yes
Enclosed: Yes
Contiguous: Yes
Permitted: Yes
Wet space: No
Addition: No
Conversion: No

12 Floor 3 - Bedroom



Dimensions: 11'0" x 10'4"
Area: 114 sq. ft
Counted as living area: Yes

Heated: Yes
Finished: Yes
Enclosed: Yes
Contiguous: Yes
Permitted: Yes
Wet space: No
Addition: No
Conversion: No

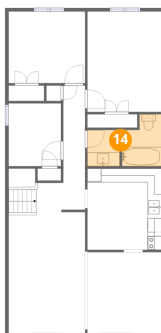
13 Floor 3 - Bedroom



Dimensions: 7'6" x 9'1"
Area: 68 sq. ft
Counted as living area: Yes

Heated: Yes
Finished: Yes
Enclosed: Yes
Contiguous: Yes
Permitted: Yes
Wet space: No
Addition: No
Conversion: No

14 Floor 3 - Bath



Dimensions: 10'8" x 7'6"
Area: 62 sq. ft
Counted as living area: Yes

Heated: Yes
Finished: Yes
Enclosed: Yes
Contiguous: Yes
Permitted: Yes
Wet space: Yes
Addition: No
Conversion: No

15 Floor 3 - Kitchen



Dimensions: 10'8" x 11'8"
Area: 125 sq. ft
Counted as living area: Yes

Heated: Yes
Finished: Yes
Enclosed: Yes
Contiguous: Yes
Permitted: Yes
Wet space: No
Addition: No
Conversion: No