

Home data report

112 Somers Lane, Clayton, Johnston County, North Carolina, United States, 27527



Total Area: 2762 sq. ft

1st Floor: 1364 sq. ft, 2nd Floor: 1398 sq. ft

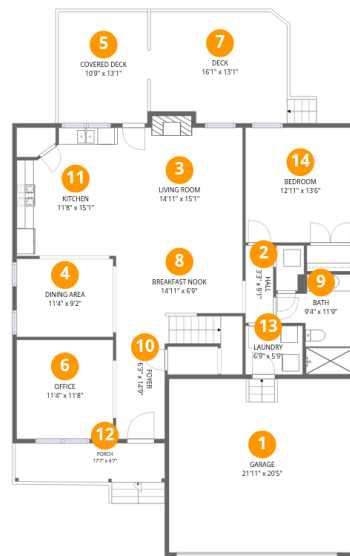
Excluded: Garage 476 sq. ft, Porch 96 sq. ft, Deck 211 sq. ft, Covered deck 141 sq. ft, Fireplace 8 sq. ft

Property summary



Home data report

112 Somers Lane, Clayton, Johnston County, North Carolina, United States, 27527



Room dimensions

Floor 1

Total:1364sqft Excluded: 932sqft

#		Dimensions	sqft	Counted as living area
1	Garage	21'11" x 20'5"	447 sq. ft	No
2	Hall	3'3" x 9'1"	30 sq. ft	Yes
3	Living Room	14'11" x 15'1"	231 sq. ft	Yes
4	Dining Area	11'4" x 9'2"	104 sq. ft	Yes
5	Covered Deck	10'9" x 13'1"	141 sq. ft	No
6	Office	11'4" x 11'8"	132 sq. ft	Yes
7	Deck	16'1" x 13'1"	211 sq. ft	No
8	Breakfast Nook	14'11" x 6'9"	100 sq. ft	Yes
9	Bath	9'4" x 11'9"	81 sq. ft	Yes
10	Foyer	6'3" x 14'9"	125 sq. ft	Yes
11	Kitchen	11'8" x 15'1"	160 sq. ft	Yes

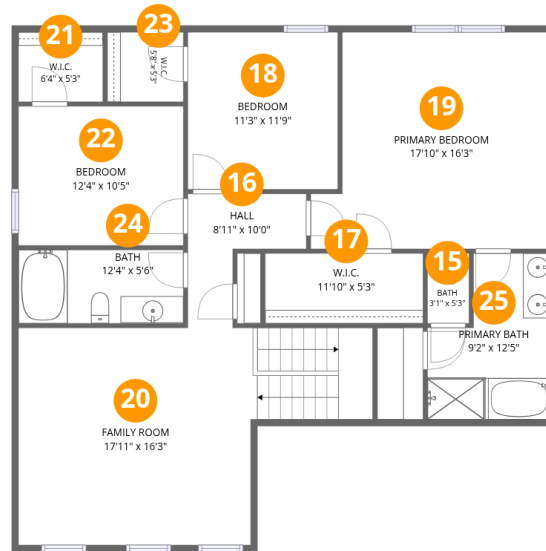
Home data report

**112 Somers Lane, Clayton, Johnston County, North Carolina,
United States, 27527**

#		Dimensions	sqft	Counted as living area
12	Porch	17'7" x 4'7"	96 sq. ft	No
13	Laundry	6'9" x 5'9"	38 sq. ft	Yes
14	Bedroom	12'11" x 13'6"	175 sq. ft	Yes

Home data report

112 Somers Lane, Clayton, Johnston County, North Carolina, United States, 27527



Room dimensions

Floor 2

Total:1398sqft Excluded: 0sqft

#		Dimensions	sqft	Counted as living area
15	Bath	3'1" x 5'3"	16 sq. ft	Yes
16	Hall	8'11" x 10'0"	57 sq. ft	Yes
17	W.I.C.	11'10" x 5'3"	62 sq. ft	Yes
18	Bedroom	11'3" x 11'9"	132 sq. ft	Yes
19	Primary Bedroom	17'10" x 16'3"	262 sq. ft	Yes
20	Family Room	17'11" x 16'3"	346 sq. ft	Yes
21	W.I.C.	6'4" x 5'3"	33 sq. ft	Yes
22	Bedroom	12'4" x 10'5"	129 sq. ft	Yes
23	W.I.C.	5'8" x 5'3"	30 sq. ft	Yes
24	Bath	12'4" x 5'6"	68 sq. ft	Yes
25	Primary Bath	9'2" x 12'5"	95 sq. ft	Yes

112 Somers Lane, Clayton, Johnston County, North Carolina,
United States, 27527

1 Floor 1 - Garage



Dimensions: 21'11" x 20'5"
Area: 447 sq. ft
Counted as living area: No

Heated: No
Finished: No
Enclosed: Yes
Contiguous: Yes
Permitted: Yes
Wet space: No
Addition: No
Conversion: No

2 Floor 1 - Hall



Dimensions: 3'3" x 9'1"
Area: 30 sq. ft
Counted as living area: Yes

Heated: Yes
Finished: Yes
Enclosed: Yes
Contiguous: Yes
Permitted: Yes
Wet space: No
Addition: No
Conversion: No

3 Floor 1 - Living Room



Dimensions: 14'11" x 15'1"
Area: 231 sq. ft
Counted as living area: Yes

Heated: Yes
Finished: Yes
Enclosed: Yes
Contiguous: Yes
Permitted: Yes
Wet space: No
Addition: No
Conversion: No

4 Floor 1 - Dining Area



Dimensions: 11'4" x 9'2"
Area: 104 sq. ft
Counted as living area: Yes

Heated: Yes
Finished: Yes
Enclosed: Yes
Contiguous: Yes
Permitted: Yes
Wet space: No
Addition: No
Conversion: No

5 Floor 1 - Covered Deck



Dimensions: 10'9" x 13'1"
Area: 141 sq. ft
Counted as living area: No

Heated: No
Finished: No
Enclosed: No
Contiguous: Yes
Permitted: Yes
Wet space: No
Addition: No
Conversion: No

6 Floor 1 - Office



Dimensions: 11'4" x 11'8"
Area: 132 sq. ft
Counted as living area: Yes

Heated: Yes
Finished: Yes
Enclosed: Yes
Contiguous: Yes
Permitted: Yes
Wet space: No
Addition: No
Conversion: No

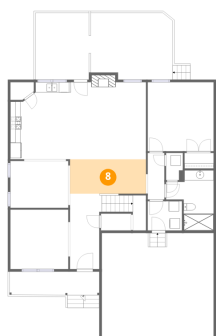
7 Floor 1 - Deck



Dimensions: 16'1" x 13'1"
Area: 211 sq. ft
Counted as living area: No

Heated: No
Finished: No
Enclosed: No
Contiguous: Yes
Permitted: Yes
Wet space: No
Addition: No
Conversion: No

8 Floor 1 - Breakfast Nook



Dimensions: 14'11" x 6'9"
Area: 100 sq. ft
Counted as living area: Yes

Heated: Yes
Finished: Yes
Enclosed: Yes
Contiguous: Yes
Permitted: Yes
Wet space: No
Addition: No
Conversion: No

9 Floor 1 - Bath



Dimensions: 9'4" x 11'9"
Area: 81 sq. ft
Counted as living area: Yes

Heated: Yes
Finished: Yes
Enclosed: Yes
Contiguous: Yes
Permitted: Yes
Wet space: Yes
Addition: No
Conversion: No

10 Floor 1 - Foyer



Dimensions: 6'3" x 14'9"
Area: 125 sq. ft
Counted as living area: Yes

Heated: Yes
Finished: Yes
Enclosed: Yes
Contiguous: Yes
Permitted: Yes
Wet space: No
Addition: No
Conversion: No

11 Floor 1 - Kitchen



Dimensions: 11'8" x 15'1"
Area: 160 sq. ft
Counted as living area: Yes

Heated: Yes
Finished: Yes
Enclosed: Yes
Contiguous: Yes
Permitted: Yes
Wet space: No
Addition: No
Conversion: No

112 Somers Lane, Clayton, Johnston County, North Carolina,
United States, 27527

12 Floor 1 - Porch



Dimensions: 17'7" x 4'7"
Area: 96 sq. ft
Counted as living area: No

Heated: No
Finished: No
Enclosed: No
Contiguous: Yes
Permitted: Yes
Wet space: No
Addition: No
Conversion: No

13 Floor 1 - Laundry



Dimensions: 6'9" x 5'9"
Area: 38 sq. ft
Counted as living area: Yes

Heated: Yes
Finished: Yes
Enclosed: Yes
Contiguous: Yes
Permitted: Yes
Wet space: No
Addition: No
Conversion: No

14 Floor 1 - Bedroom



Dimensions: 12'11" x 13'6"
Area: 175 sq. ft
Counted as living area: Yes

Heated: Yes
Finished: Yes
Enclosed: Yes
Contiguous: Yes
Permitted: Yes
Wet space: No
Addition: No
Conversion: No

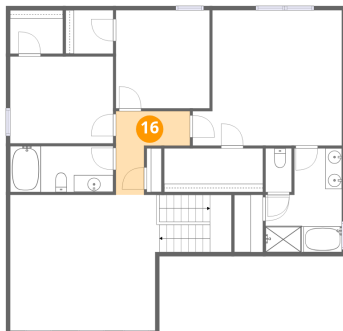
15 Floor 2 - Bath



Dimensions: 3'1" x 5'3"
Area: 16 sq. ft
Counted as living area: Yes

Heated: Yes
Finished: Yes
Enclosed: Yes
Contiguous: Yes
Permitted: Yes
Wet space: Yes
Addition: No
Conversion: No

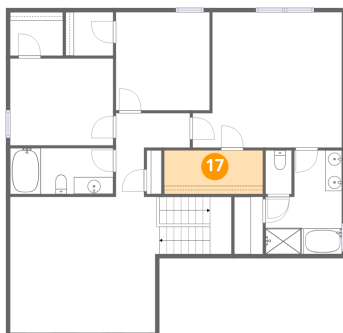
16 Floor 2 - Hall



Dimensions: 8'11" x 10'0"
Area: 57 sq. ft
Counted as living area: Yes

Heated: Yes
Finished: Yes
Enclosed: Yes
Contiguous: Yes
Permitted: Yes
Wet space: No
Addition: No
Conversion: No

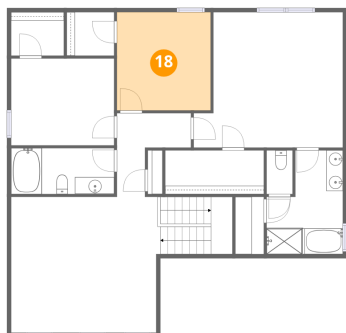
17 Floor 2 - W.I.C.



Dimensions: 11'10" x 5'3"
Area: 62 sq. ft
Counted as living area: Yes

Heated: Yes
Finished: Yes
Enclosed: Yes
Contiguous: Yes
Permitted: Yes
Wet space: No
Addition: No
Conversion: No

18 Floor 2 - Bedroom



Dimensions: 11'3" x 11'9"
Area: 132 sq. ft
Counted as living area: Yes

Heated: Yes
Finished: Yes
Enclosed: Yes
Contiguous: Yes
Permitted: Yes
Wet space: No
Addition: No
Conversion: No

19 Floor 2 - Primary Bedroom



Dimensions: 17'10" x 16'3"
Area: 262 sq. ft
Counted as living area: Yes

Heated: Yes
Finished: Yes
Enclosed: Yes
Contiguous: Yes
Permitted: Yes
Wet space: No
Addition: No
Conversion: No

20 Floor 2 - Family Room



Dimensions: 17'11" x 16'3"
Area: 346 sq. ft
Counted as living area: Yes

Heated: Yes
Finished: Yes
Enclosed: Yes
Contiguous: Yes
Permitted: Yes
Wet space: No
Addition: No
Conversion: No

21 Floor 2 - W.I.C.



Dimensions: 6'4" x 5'3"
Area: 33 sq. ft
Counted as living area: Yes

Heated: Yes
Finished: Yes
Enclosed: Yes
Contiguous: Yes
Permitted: Yes
Wet space: No
Addition: No
Conversion: No

22 Floor 2 - Bedroom



Dimensions: 12'4" x 10'5"
Area: 129 sq. ft
Counted as living area: Yes

Heated: Yes
Finished: Yes
Enclosed: Yes
Contiguous: Yes
Permitted: Yes
Wet space: No
Addition: No
Conversion: No

23 Floor 2 - W.I.C.



Dimensions: 5'8" x 5'3"
Area: 30 sq. ft
Counted as living area: Yes

Heated: Yes
Finished: Yes
Enclosed: Yes
Contiguous: Yes
Permitted: Yes
Wet space: No
Addition: No
Conversion: No

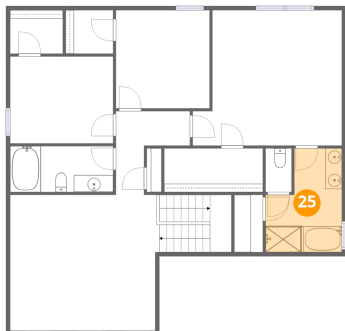
24 Floor 2 - Bath



Dimensions: 12'4" x 5'6"
Area: 68 sq. ft
Counted as living area: Yes

Heated: Yes
Finished: Yes
Enclosed: Yes
Contiguous: Yes
Permitted: Yes
Wet space: Yes
Addition: No
Conversion: No

25 Floor 2 - Primary Bath



Dimensions: 9'2" x 12'5"
Area: 95 sq. ft
Counted as living area: Yes

Heated: Yes
Finished: Yes
Enclosed: Yes
Contiguous: Yes
Permitted: Yes
Wet space: Yes
Addition: No
Conversion: No