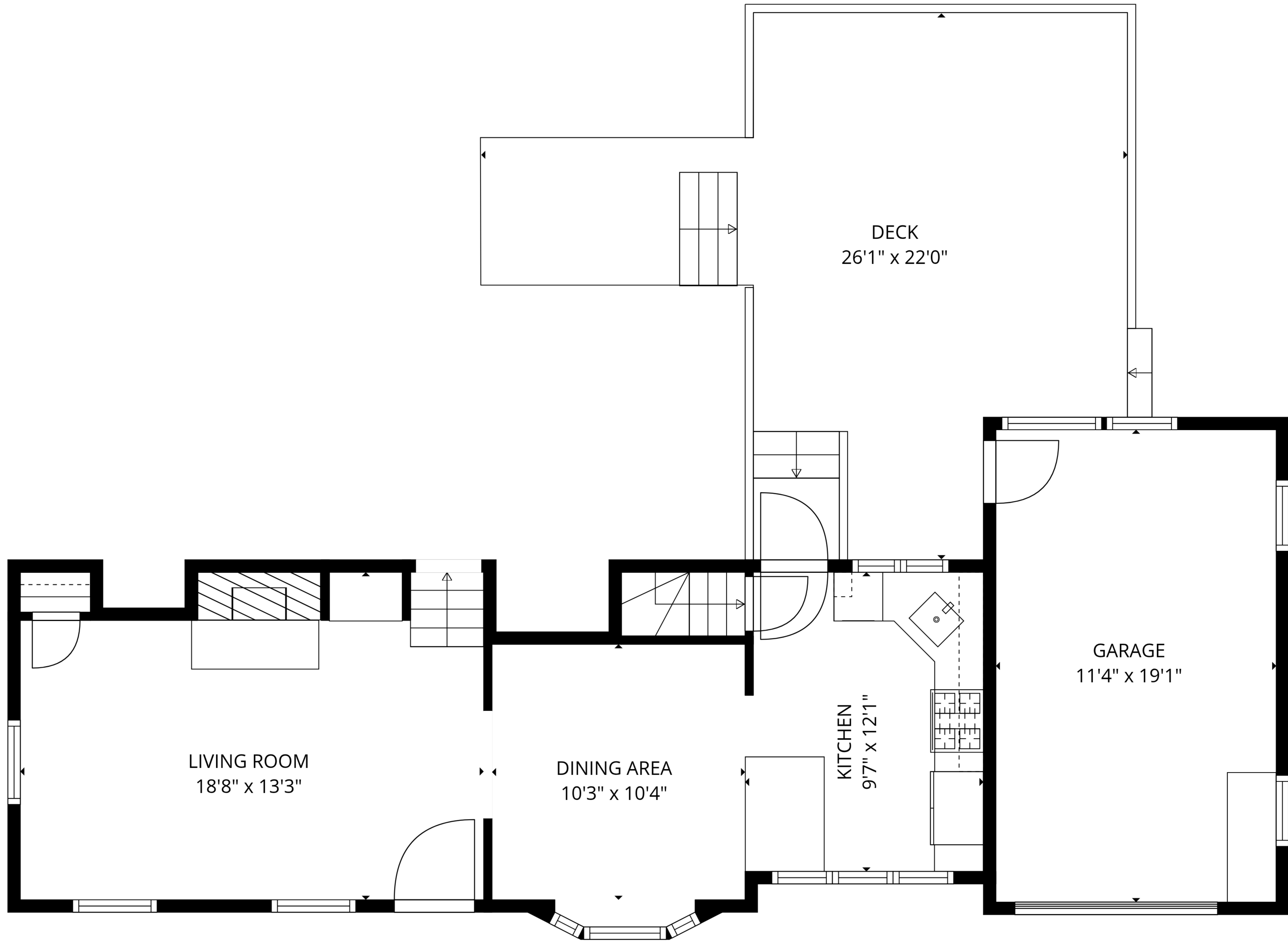


**TOTAL: 1101 sq. ft**

Basement: 25 sq. ft, 1st floor: 479 sq. ft, 2nd floor: 374 sq. ft, 3rd floor: 223 sq. ft  
 EXCLUDED AREAS: UTILITY: 292 sq. ft, GARAGE: 216 sq. ft, DECK: 366 sq. ft,  
 BAY WINDOW: 6 sq. ft, LOW CEILING: 63 sq. ft, STORAGE: 158 sq. ft,  
 WALLS: 212 sq. ft



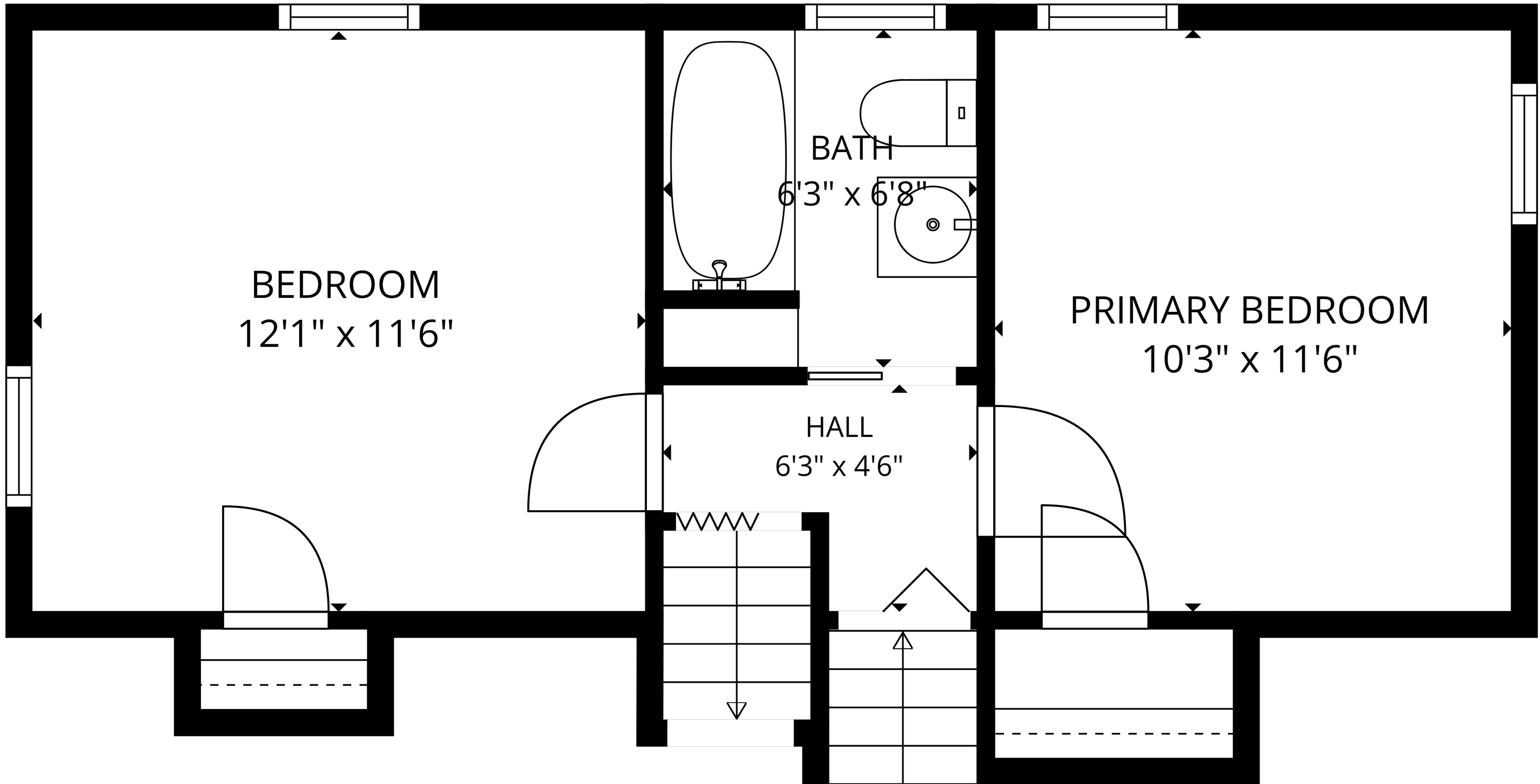


**TOTAL: 1101 sq. ft**

Basement: 25 sq. ft, 1st floor: 479 sq. ft, 2nd floor: 374 sq. ft, 3rd floor: 223 sq. ft  
 EXCLUDED AREAS: UTILITY: 292 sq. ft, GARAGE: 216 sq. ft, DECK: 366 sq. ft,  
 BAY WINDOW: 6 sq. ft, LOW CEILING: 63 sq. ft, STORAGE: 158 sq. ft,  
 WALLS: 212 sq. ft



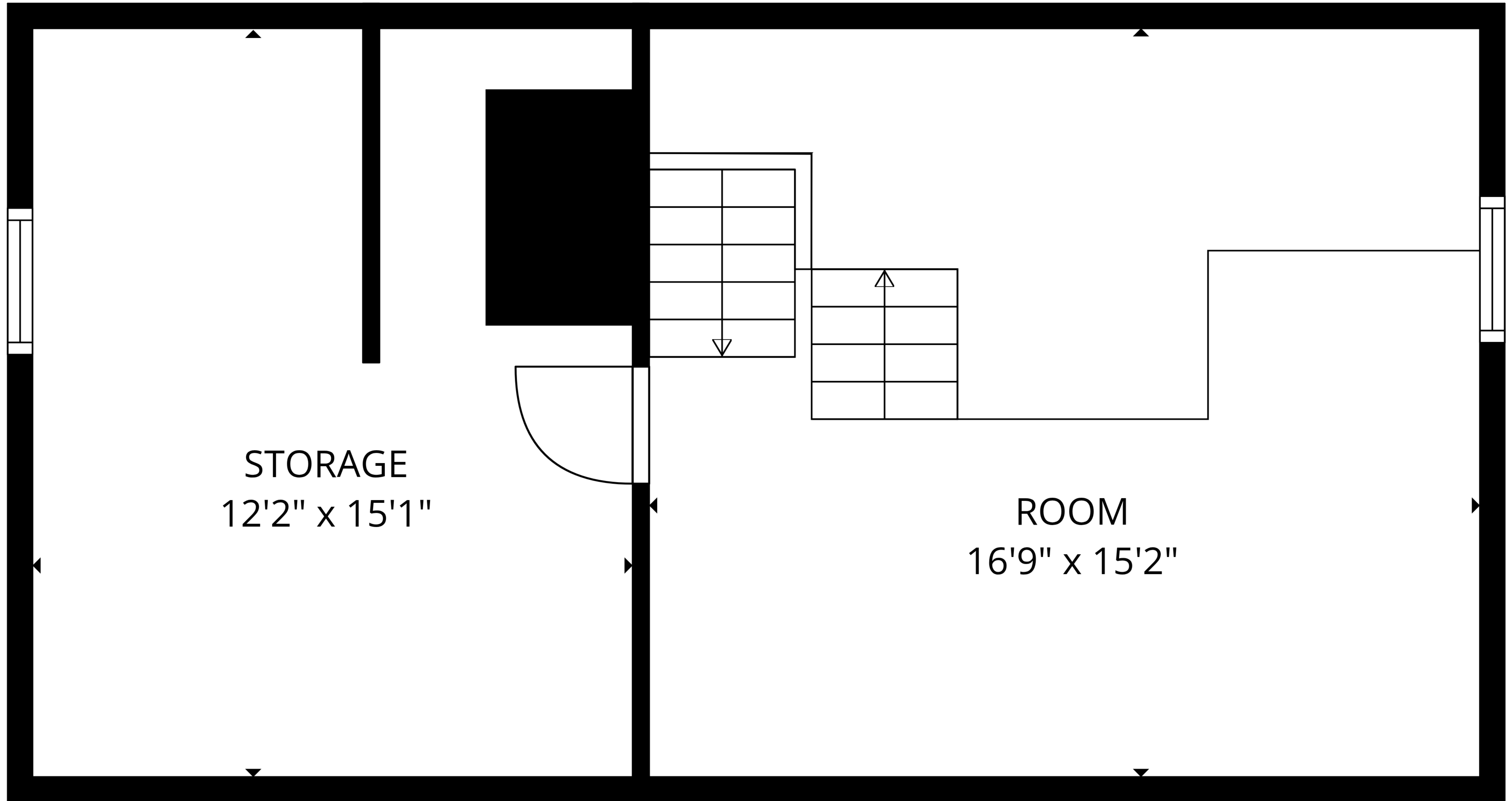
Floor Plans are provided by HouseSnappers.com. Measurements are deemed highly reliable but not guaranteed.



**TOTAL: 1101 sq. ft**

Basement: 25 sq. ft, 1st floor: 479 sq. ft, 2nd floor: 374 sq. ft, 3rd floor: 223 sq. ft  
 EXCLUDED AREAS: UTILITY: 292 sq. ft, GARAGE: 216 sq. ft, DECK: 366 sq. ft,  
 BAY WINDOW: 6 sq. ft, LOW CEILING: 63 sq. ft, STORAGE: 158 sq. ft,  
 WALLS: 212 sq. ft





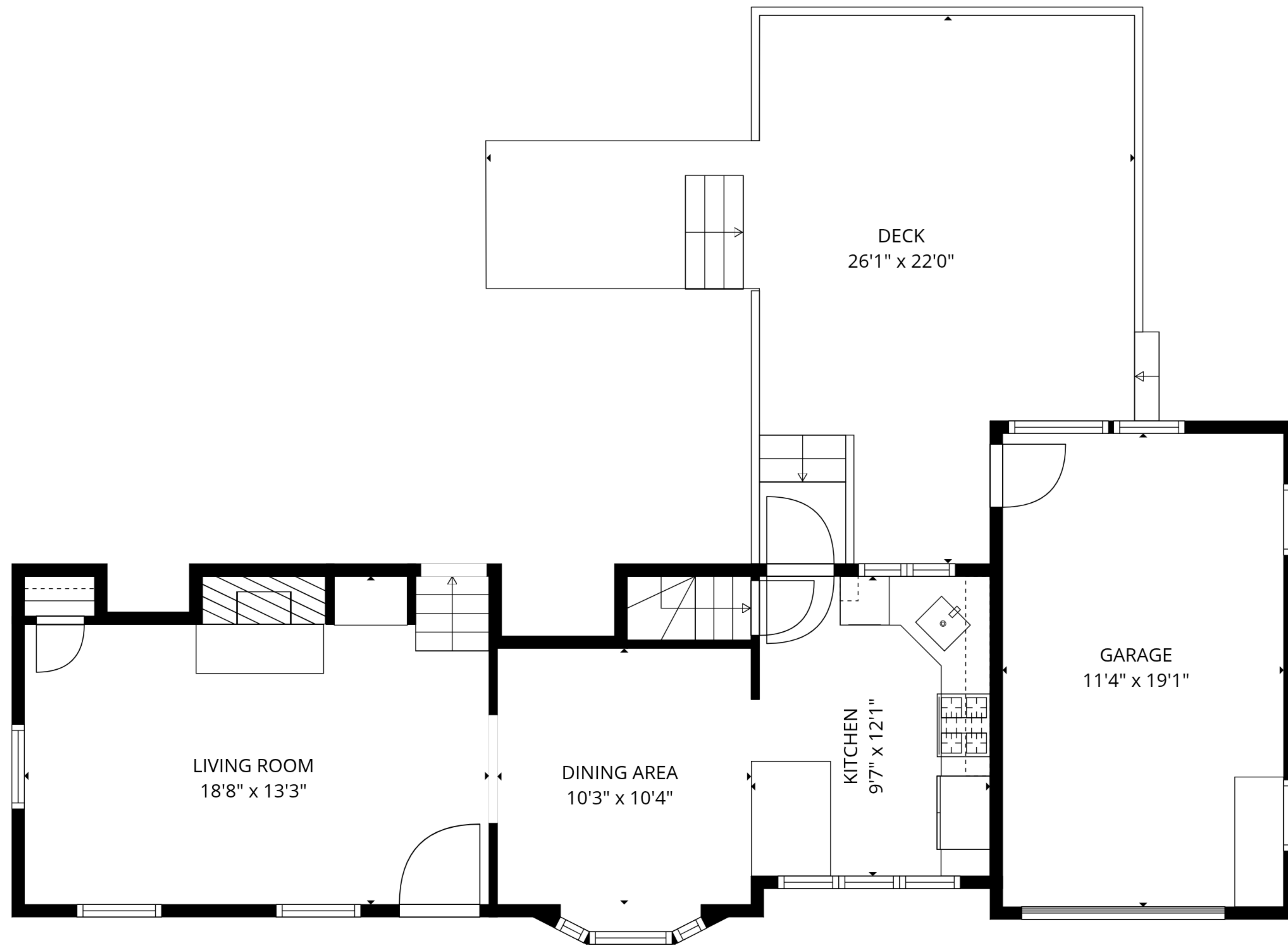
STORAGE  
12'2" x 15'1"

ROOM  
16'9" x 15'2"

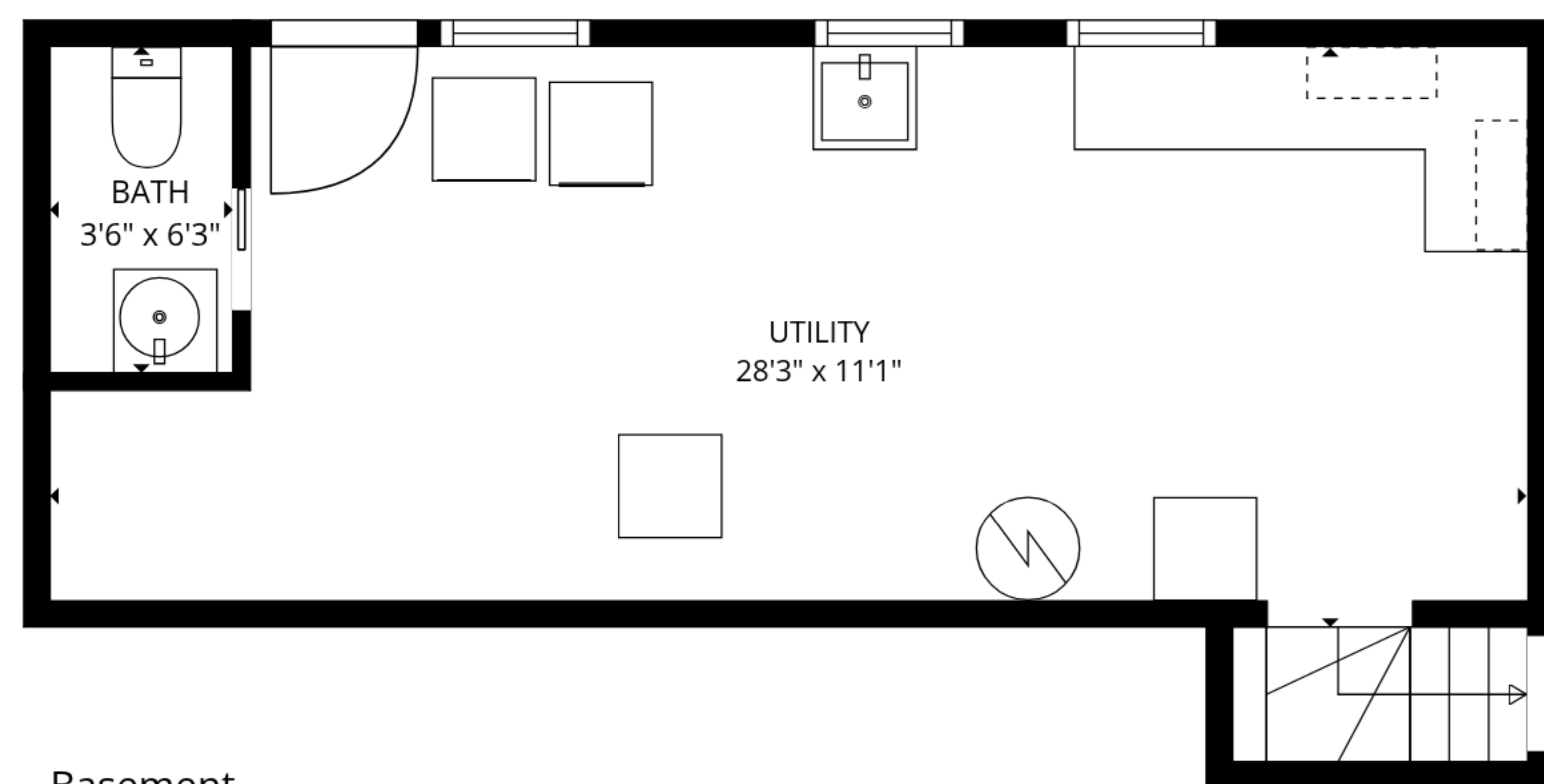
**TOTAL: 1101 sq. ft**

Basement: 25 sq. ft, 1st floor: 479 sq. ft, 2nd floor: 374 sq. ft, 3rd floor: 223 sq. ft  
 EXCLUDED AREAS: UTILITY: 292 sq. ft, GARAGE: 216 sq. ft, DECK: 366 sq. ft,  
 BAY WINDOW: 6 sq. ft, LOW CEILING: 63 sq. ft, STORAGE: 158 sq. ft,  
 WALLS: 212 sq. ft

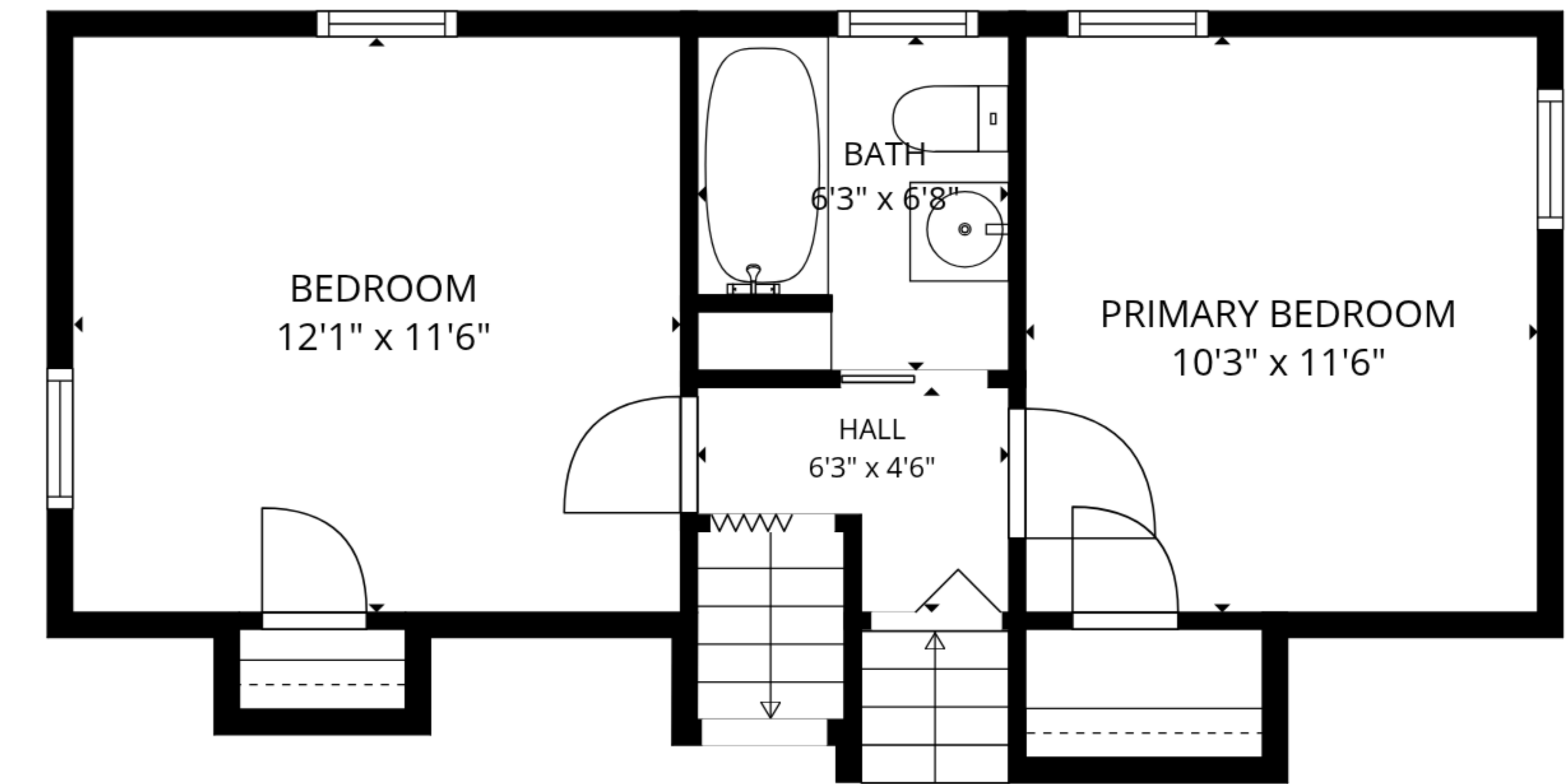




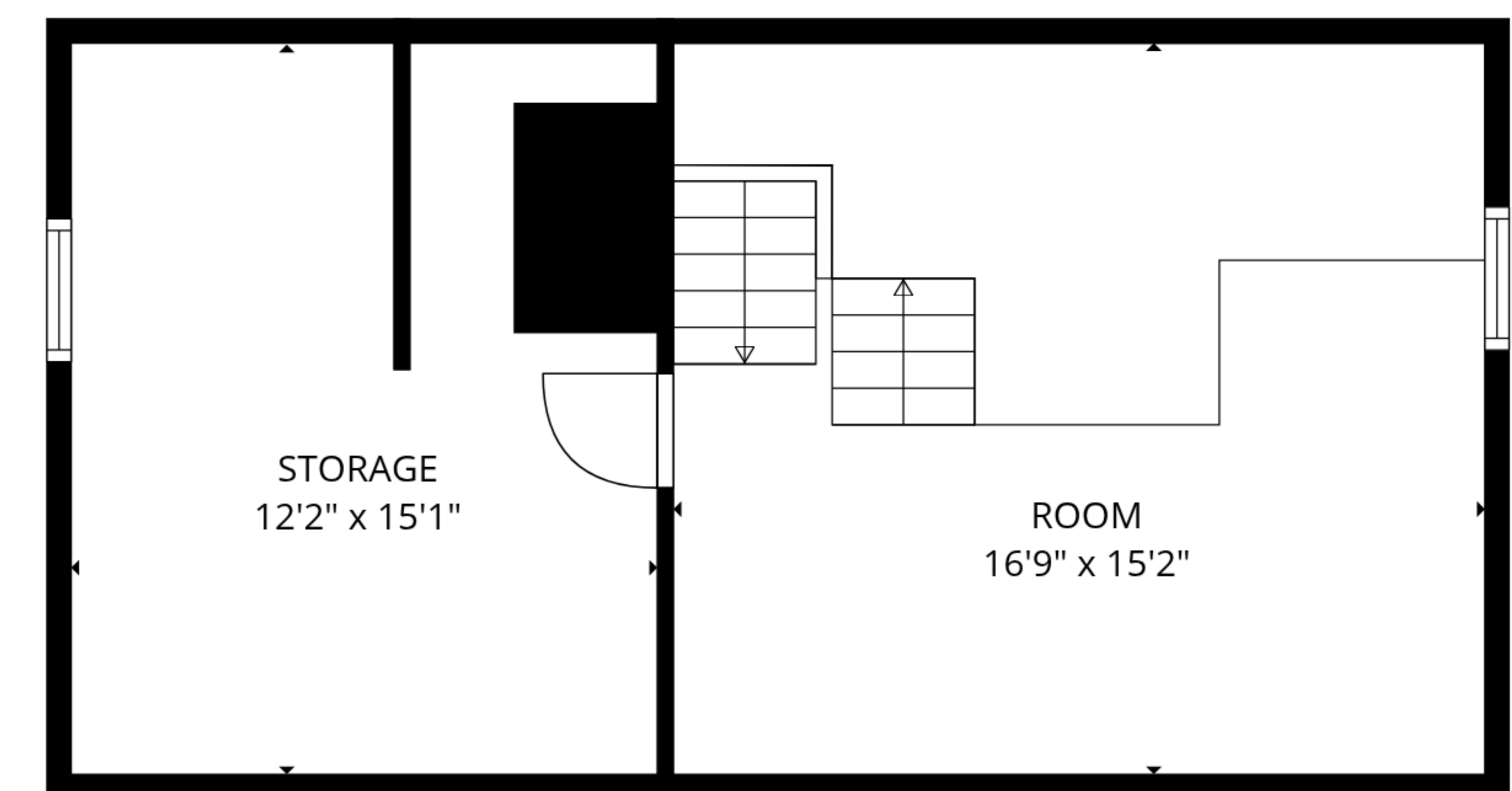
1st floor



Basement



2nd floor



3rd floor

**TOTAL: 1101 sq. ft**

Basement: 25 sq. ft, 1st floor: 479 sq. ft, 2nd floor: 374 sq. ft, 3rd floor: 223 sq. ft  
 EXCLUDED AREAS: UTILITY: 292 sq. ft, GARAGE: 216 sq. ft, DECK: 366 sq. ft,  
 BAY WINDOW: 6 sq. ft, LOW CEILING: 63 sq. ft, STORAGE: 158 sq. ft,  
 WALLS: 212 sq. ft

