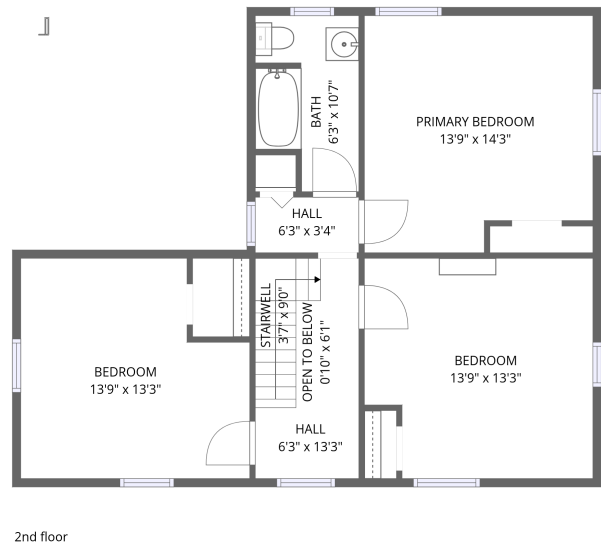
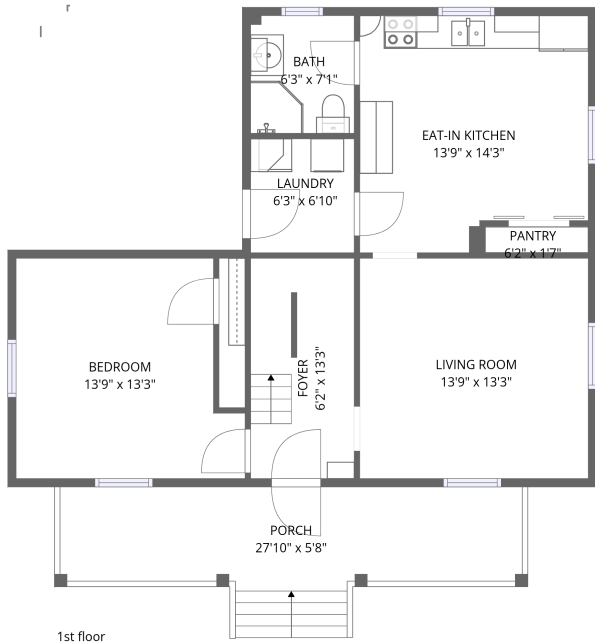


Home data report

611 Church Avenue Southeast, Roanoke, Virginia 24013, United States



Total Area: 1472 sq. ft

1st Floor: 752 sq. ft, 2nd Floor: 720 sq. ft

Excluded: Porch 180 sq. ft, Stairwell 32 sq. ft, Walls: 126 sq. ft

Property summary

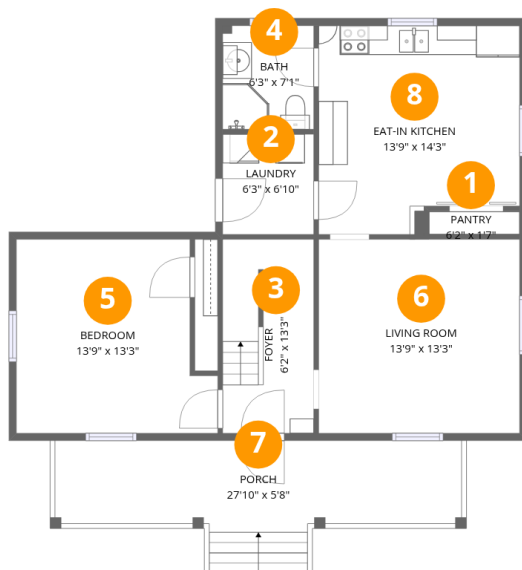
 **2** Floors

 **4** Bedrooms

 **2** Bathrooms

Home data report

611 Church Avenue Southeast, Roanoke, Virginia 24013, United States



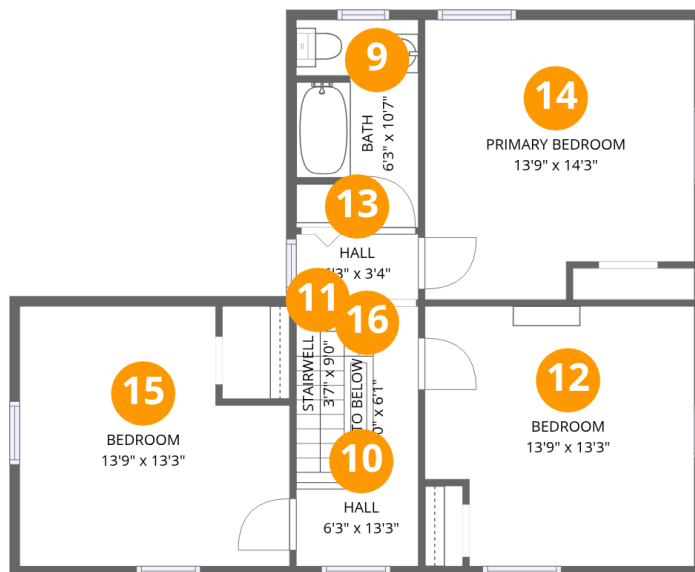
Room dimensions

Floor 1

Total:752sqft Excluded: 180sqft

#		Dimensions	sqft	Counted as living area
1	Pantry	6'2" x 1'7"	10 sq. ft	Yes
2	Laundry	6'3" x 6'10"	43 sq. ft	Yes
3	Foyer	6'2" x 13'3"	82 sq. ft	Yes
4	Bath	6'3" x 7'1"	44 sq. ft	Yes
5	Bedroom	13'9" x 13'3"	182 sq. ft	Yes
6	Living Room	13'9" x 13'3"	182 sq. ft	Yes
7	Porch	27'10" x 5'8"	157 sq. ft	No
8	Eat-in Kitchen	13'9" x 14'3"	196 sq. ft	Yes

611 Church Avenue Southeast, Roanoke, Virginia 24013, United States



Room dimensions

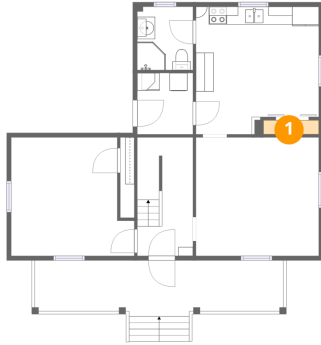
Floor 2

Total:720sqft Excluded: 32sqft

#		Dimensions	sqft	Counted as living area
9	Bath	6'3" x 10'7"	66 sq. ft	Yes
10	Hall	6'3" x 13'3"	83 sq. ft	Yes
11	Stairwell	3'7" x 9'0"	32 sq. ft	No
12	Bedroom	13'9" x 13'3"	182 sq. ft	Yes
13	Hall	6'3" x 3'4"	21 sq. ft	Yes
14	Primary Bedroom	13'9" x 14'3"	196 sq. ft	Yes
15	Bedroom	13'9" x 13'3"	182 sq. ft	Yes
16	Open To Below	0'10" x 6'1"	5 sq. ft	Yes

611 Church Avenue Southeast, Roanoke, Virginia 24013, United States

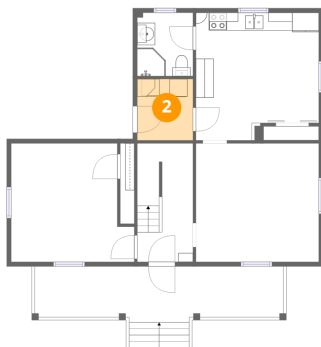
1 Floor 1 - Pantry



Dimensions: 6'2" x 1'7"
Area: 10 sq. ft
Counted as living area: Yes

Heated: Yes
Finished: Yes
Enclosed: Yes
Contiguous: Yes
Permitted: Yes
Wet space: No
Addition: No
Conversion: No

2 Floor 1 - Laundry

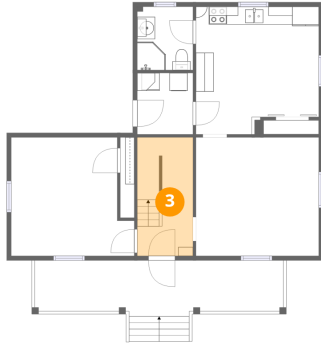


Dimensions: 6'3" x 6'10"
Area: 43 sq. ft
Counted as living area: Yes

Heated: Yes
Finished: Yes
Enclosed: Yes
Contiguous: Yes
Permitted: Yes
Wet space: No
Addition: No
Conversion: No

611 Church Avenue Southeast, Roanoke, Virginia 24013, United States

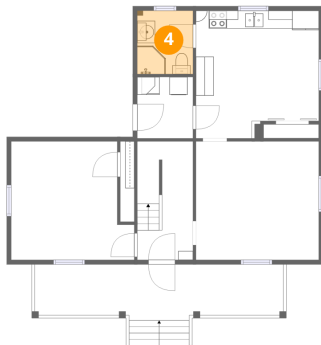
3 Floor 1 - Foyer



Dimensions: 6'2" x 13'3"
Area: 82 sq. ft
Counted as living area: Yes

Heated: Yes
Finished: Yes
Enclosed: Yes
Contiguous: Yes
Permitted: Yes
Wet space: No
Addition: No
Conversion: No

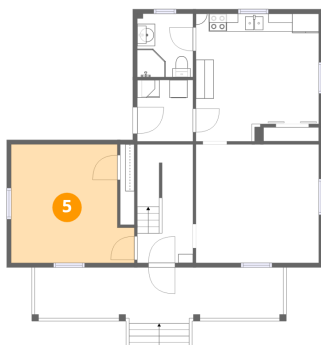
4 Floor 1 - Bath



Dimensions: 6'3" x 7'1"
Area: 44 sq. ft
Counted as living area: Yes

Heated: Yes
Finished: Yes
Enclosed: Yes
Contiguous: Yes
Permitted: Yes
Wet space: Yes
Addition: No
Conversion: No

5 Floor 1 - Bedroom

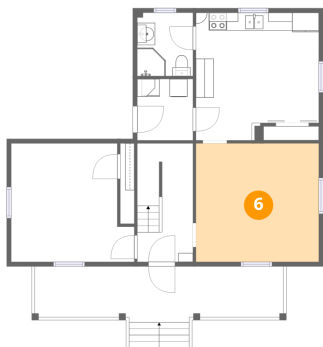


Dimensions: 13'9" x 13'3"
Area: 182 sq. ft
Counted as living area: Yes

Heated: Yes
Finished: Yes
Enclosed: Yes
Contiguous: Yes
Permitted: Yes
Wet space: No
Addition: No
Conversion: No

611 Church Avenue Southeast, Roanoke, Virginia 24013, United States

6 Floor 1 - Living Room



Dimensions: 13'9" x 13'3"
Area: 182 sq. ft
Counted as living area: Yes

Heated: Yes
Finished: Yes
Enclosed: Yes
Contiguous: Yes
Permitted: Yes
Wet space: No
Addition: No
Conversion: No

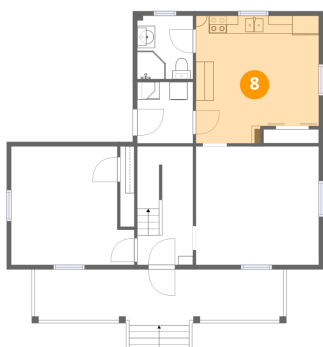
7 Floor 1 - Porch



Dimensions: 27'10" x 5'8"
Area: 157 sq. ft
Counted as living area: No

Heated: No
Finished: No
Enclosed: No
Contiguous: Yes
Permitted: Yes
Wet space: No
Addition: No
Conversion: No

8 Floor 1 - Eat-in Kitchen

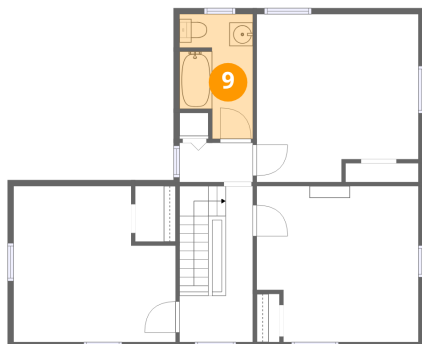


Dimensions: 13'9" x 14'3"
Area: 196 sq. ft
Counted as living area: Yes

Heated: Yes
Finished: Yes
Enclosed: Yes
Contiguous: Yes
Permitted: Yes
Wet space: No
Addition: No
Conversion: No

611 Church Avenue Southeast, Roanoke, Virginia 24013, United States

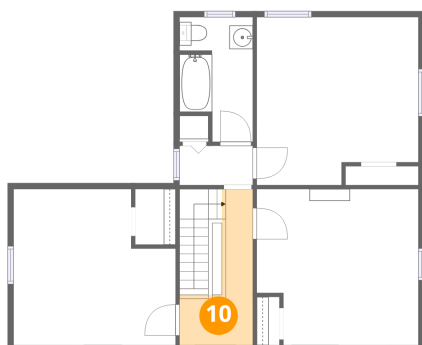
9 Floor 2 - Bath



Dimensions: 6'3" x 10'7"
Area: 66 sq. ft
Counted as living area: Yes

Heated: Yes
Finished: Yes
Enclosed: Yes
Contiguous: Yes
Permitted: Yes
Wet space: Yes
Addition: No
Conversion: No

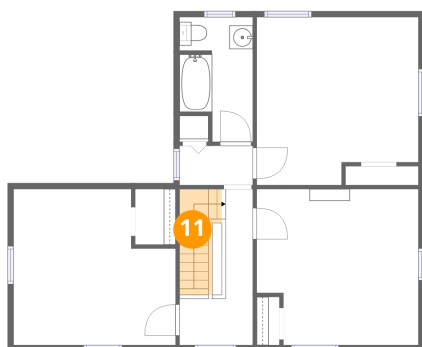
10 Floor 2 - Hall



Dimensions: 6'3" x 13'3"
Area: 83 sq. ft
Counted as living area: Yes

Heated: Yes
Finished: Yes
Enclosed: Yes
Contiguous: Yes
Permitted: Yes
Wet space: No
Addition: No
Conversion: No

11 Floor 2 - Stairwell

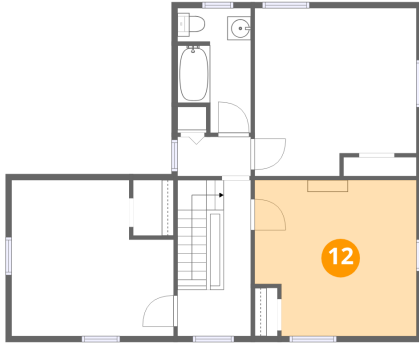


Dimensions: 3'7" x 9'0"
Area: 32 sq. ft
Counted as living area: No

Heated: No
Finished: No
Enclosed: No
Contiguous: Yes
Permitted: No
Wet space: No
Addition: No
Conversion: No

611 Church Avenue Southeast, Roanoke, Virginia 24013, United States

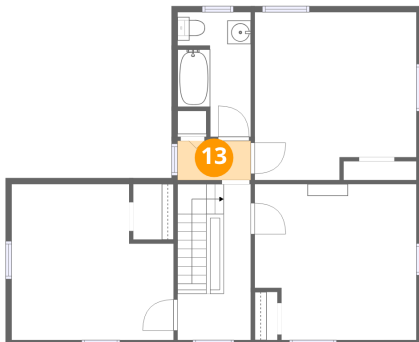
12 Floor 2 - Bedroom



Dimensions: 13'9" x 13'3"
Area: 182 sq. ft
Counted as living area: Yes

Heated: Yes
Finished: Yes
Enclosed: Yes
Contiguous: Yes
Permitted: Yes
Wet space: No
Addition: No
Conversion: No

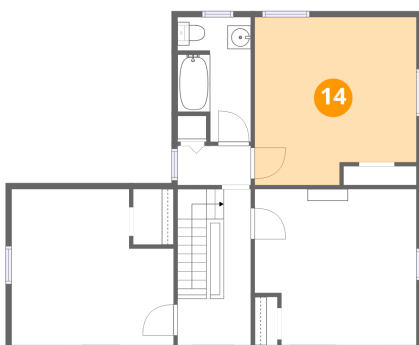
13 Floor 2 - Hall



Dimensions: 6'3" x 3'4"
Area: 21 sq. ft
Counted as living area: Yes

Heated: Yes
Finished: Yes
Enclosed: Yes
Contiguous: Yes
Permitted: Yes
Wet space: No
Addition: No
Conversion: No

14 Floor 2 - Primary Bedroom

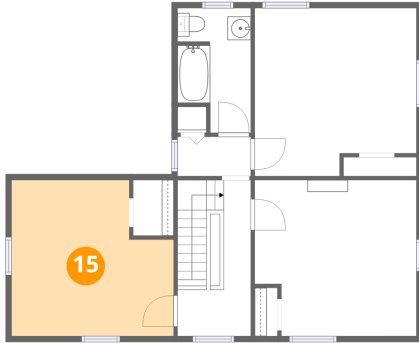


Dimensions: 13'9" x 14'3"
Area: 196 sq. ft
Counted as living area: Yes

Heated: Yes
Finished: Yes
Enclosed: Yes
Contiguous: Yes
Permitted: Yes
Wet space: No
Addition: No
Conversion: No

611 Church Avenue Southeast, Roanoke, Virginia 24013, United States

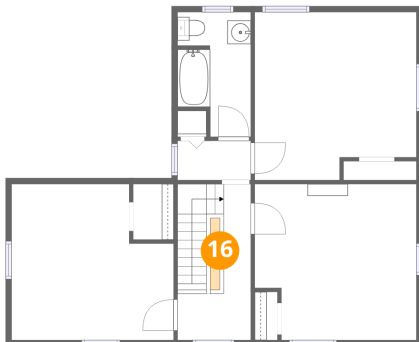
15 Floor 2 - Bedroom



Dimensions: 13'9" x 13'3"
Area: 182 sq. ft
Counted as living area: Yes

Heated: Yes
Finished: Yes
Enclosed: Yes
Contiguous: Yes
Permitted: Yes
Wet space: No
Addition: No
Conversion: No

16 Floor 2 - Open To Below



Dimensions: 0'10" x 6'1"
Area: 5 sq. ft
Counted as living area: Yes

Heated: No
Finished: No
Enclosed: No
Contiguous: Yes
Permitted: No
Wet space: No
Addition: No
Conversion: No