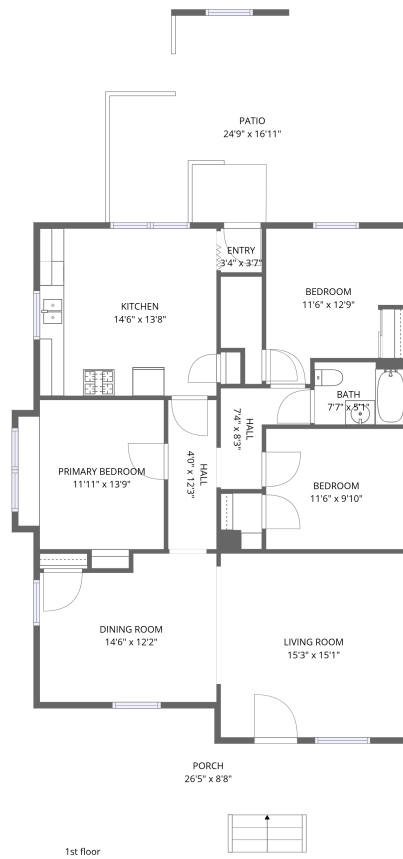


Home data report

225 E Pennsylvania St, Shelbyville, IN, US



Total Area: 1222 sq. ft

1st Floor: 1222 sq. ft

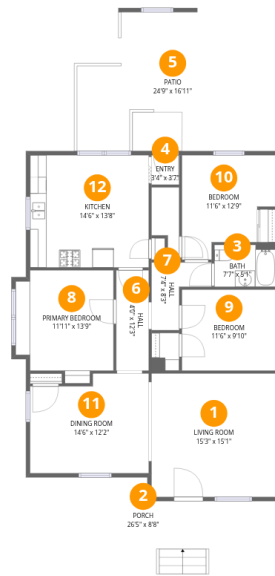
Excluded: Patio 318 sq. ft, Porch 189 sq. ft, Walls: 80 sq. ft

Property summary

 **1** Floors

 **3** Bedrooms

 **1** Bathrooms



Room dimensions

Floor 1

Total: 1222 sqft

Excluded: 507 sqft

#		Dimensions	sqft	Counted as living area
1	Living Room	15'3" x 15'1"	229 sq. ft	Yes
2	Porch	26'5" x 8'8"	229 sq. ft	No
3	Bath	7'7" x 5'1"	39 sq. ft	Yes
4	Entry	3'4" x 3'7"	12 sq. ft	Yes
5	Patio	24'9" x 16'11"	419 sq. ft	No
6	Hall	4'0" x 12'3"	48 sq. ft	Yes
7	Hall	7'4" x 8'3"	61 sq. ft	Yes
8	Primary Bedroom	11'11" x 13'9"	164 sq. ft	Yes
9	Bedroom	11'6" x 9'10"	114 sq. ft	Yes
10	Bedroom	11'6" x 12'9"	146 sq. ft	Yes
11	Dining Room	14'6" x 12'2"	176 sq. ft	Yes

Home data report

225 E Pennsylvania St,Shelbyville,IN,US

#		Dimensions	sqft	Counted as living area
12	Kitchen	14'6" x 13'8"	198 sq. ft	Yes

1 Floor 1 - Living Room



Dimensions: 15'3" x 15'1"
Area: 229 sq. ft
Counted as living area: Yes

Heated: Yes
Finished: Yes
Enclosed: Yes
Contiguous: Yes
Permitted: Yes
Wet space: No
Addition: No
Conversion: No

2 Floor 1 - Porch



Dimensions: 26'5" x 8'8"
Area: 229 sq. ft
Counted as living area: No

Heated: No
Finished: No
Enclosed: No
Contiguous: Yes
Permitted: Yes
Wet space: No
Addition: No
Conversion: No

3 Floor 1 - Bath



Dimensions: 7'7" x 5'1"
Area: 39 sq. ft
Counted as living area: Yes

Heated: Yes
Finished: Yes
Enclosed: Yes
Contiguous: Yes
Permitted: Yes
Wet space: Yes
Addition: No
Conversion: No

4 Floor 1 - Entry



Dimensions: 3'4" x 3'7"
Area: 12 sq. ft
Counted as living area: Yes

Heated: Yes
Finished: Yes
Enclosed: Yes
Contiguous: Yes
Permitted: Yes
Wet space: No
Addition: No
Conversion: No

5 Floor 1 - Patio



Dimensions: 24'9" x 16'11"
Area: 419 sq. ft
Counted as living area: No

Heated: No
Finished: No
Enclosed: No
Contiguous: Yes
Permitted: Yes
Wet space: No
Addition: No
Conversion: No

6 Floor 1 - Hall



Dimensions: 4'0" x 12'3"
Area: 48 sq. ft
Counted as living area: Yes

Heated: Yes
Finished: Yes
Enclosed: Yes
Contiguous: Yes
Permitted: Yes
Wet space: No
Addition: No
Conversion: No

7 Floor 1 - Hall



Dimensions: 7'4" x 8'3"
Area: 61 sq. ft
Counted as living area: Yes

Heated: Yes
Finished: Yes
Enclosed: Yes
Contiguous: Yes
Permitted: Yes
Wet space: No
Addition: No
Conversion: No

8 Floor 1 - Primary Bedroom



Dimensions: 11'11" x 13'9"
Area: 164 sq. ft
Counted as living area: Yes

Heated: Yes
Finished: Yes
Enclosed: Yes
Contiguous: Yes
Permitted: Yes
Wet space: No
Addition: No
Conversion: No

9 Floor 1 - Bedroom



Dimensions: 11'6" x 9'10"
Area: 114 sq. ft
Counted as living area: Yes

Heated: Yes
Finished: Yes
Enclosed: Yes
Contiguous: Yes
Permitted: Yes
Wet space: No
Addition: No
Conversion: No

10 Floor 1 - Bedroom



Dimensions: 11'6" x 12'9"
Area: 146 sq. ft
Counted as living area: Yes

Heated: Yes
Finished: Yes
Enclosed: Yes
Contiguous: Yes
Permitted: Yes
Wet space: No
Addition: No
Conversion: No

11 Floor 1 - Dining Room



Dimensions: 14'6" x 12'2"
Area: 176 sq. ft
Counted as living area: Yes

Heated: Yes
Finished: Yes
Enclosed: Yes
Contiguous: Yes
Permitted: Yes
Wet space: No
Addition: No
Conversion: No

12 Floor 1 - Kitchen



Dimensions: 14'6" x 13'8"
Area: 198 sq. ft
Counted as living area: Yes

Heated: Yes
Finished: Yes
Enclosed: Yes
Contiguous: Yes
Permitted: Yes
Wet space: No
Addition: No
Conversion: No