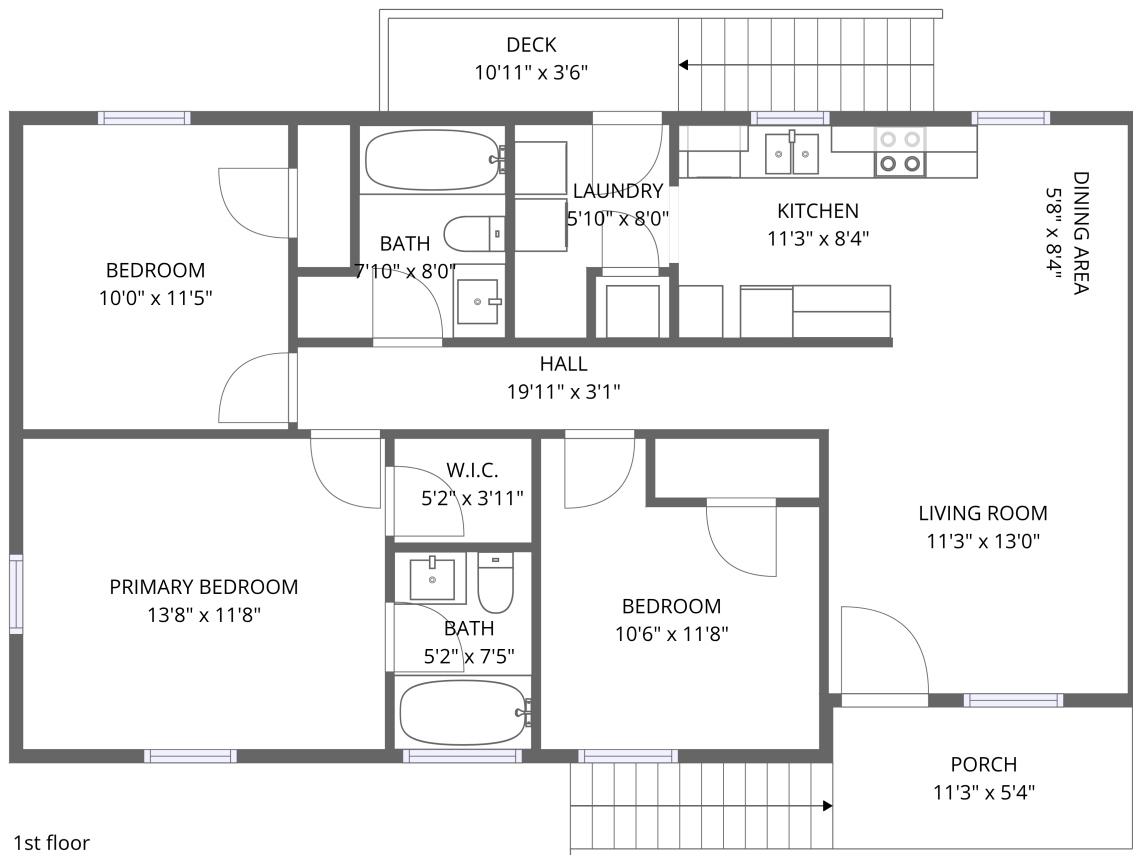


## Home data report

9619 Old Roanoke Road, Elliston, Montgomery County, Virginia,  
United States, 24087




**Total Area: 954 sq. ft**

1st Floor: 954 sq. ft

Excluded: Porch 92 sq. ft, Deck 72 sq. ft, Walls: 66 sq. ft

## Property summary

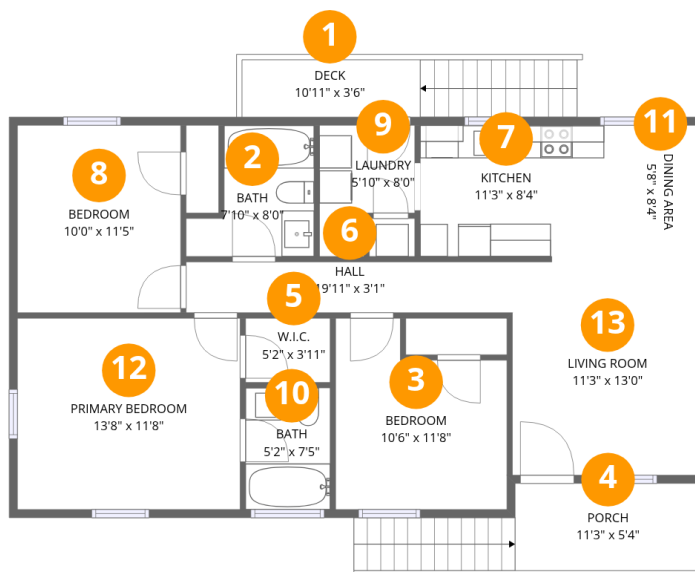
 **1** Floors

 **3** Bedrooms

 **2** Bathrooms

Home data report

9619 Old Roanoke Road, Elliston, Montgomery County, Virginia, United States, 24087



## Room dimensions

Floor 1

Total:954sqft Excluded: 164sqft

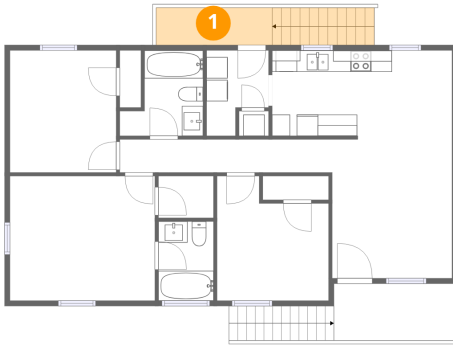
#		Dimensions	sqft	Counted as living area
1	Deck	10'11" x 3'6"	72 sq. ft	No
2	Bath	7'10" x 8'0"	50 sq. ft	Yes
3	Bedroom	10'6" x 11'8"	106 sq. ft	Yes
4	Porch	11'3" x 5'4"	92 sq. ft	No
5	W.I.C.	5'2" x 3'11"	20 sq. ft	Yes
6	Hall	19'11" x 3'1"	62 sq. ft	Yes
7	Kitchen	11'3" x 8'4"	91 sq. ft	Yes
8	Bedroom	10'0" x 11'5"	115 sq. ft	Yes
9	Laundry	5'10" x 8'0"	39 sq. ft	Yes
10	Bath	5'2" x 7'5"	39 sq. ft	Yes
11	Dining Area	5'8" x 8'4"	47 sq. ft	Yes

Home data report

**9619 Old Roanoke Road, Elliston, Montgomery County, Virginia,  
United States, 24087**

#		Dimensions	sqft	Counted as living area
12	Primary Bedroom	13'8" x 11'8"	160 sq. ft	Yes
13	Living Room	11'3" x 13'0"	147 sq. ft	Yes

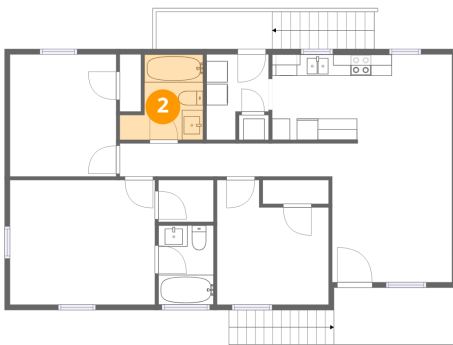
## 1 Floor 1 - Deck



Dimensions: 10'11" x 3'6"  
Area: 72 sq. ft  
Counted as living area: No

Heated: No  
Finished: No  
Enclosed: No  
Contiguous: Yes  
Permitted: Yes  
Wet space: No  
Addition: No  
Conversion: No

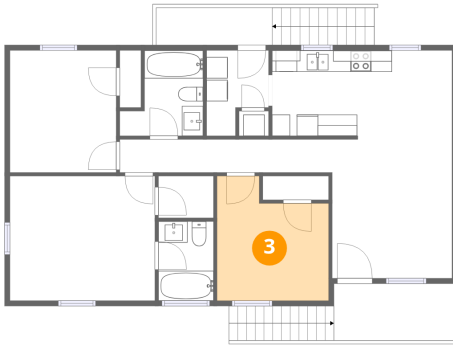
## 2 Floor 1 - Bath



Dimensions: 7'10" x 8'0"  
Area: 50 sq. ft  
Counted as living area: Yes

Heated: Yes  
Finished: Yes  
Enclosed: Yes  
Contiguous: Yes  
Permitted: Yes  
Wet space: Yes  
Addition: No  
Conversion: No

**3** Floor 1 - Bedroom



Dimensions: 10'6" x 11'8"  
Area: 106 sq. ft  
Counted as living area: Yes

Heated: Yes  
Finished: Yes  
Enclosed: Yes  
Contiguous: Yes  
Permitted: Yes  
Wet space: No  
Addition: No  
Conversion: No

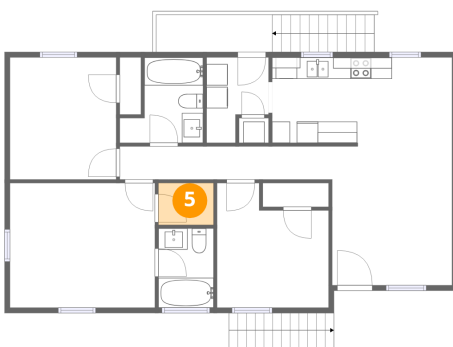
**4** Floor 1 - Porch



Dimensions: 11'3" x 5'4"  
Area: 92 sq. ft  
Counted as living area: No

Heated: No  
Finished: No  
Enclosed: No  
Contiguous: Yes  
Permitted: Yes  
Wet space: No  
Addition: No  
Conversion: No

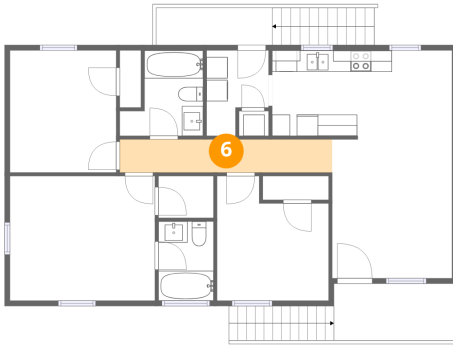
**5** Floor 1 - W.I.C.



Dimensions: 5'2" x 3'11"  
Area: 20 sq. ft  
Counted as living area: Yes

Heated: Yes  
Finished: Yes  
Enclosed: Yes  
Contiguous: Yes  
Permitted: Yes  
Wet space: No  
Addition: No  
Conversion: No

**6** Floor 1 - Hall



Dimensions: 19'11" x 3'1"  
Area: 62 sq. ft  
Counted as living area: Yes

Heated: Yes  
Finished: Yes  
Enclosed: Yes  
Contiguous: Yes  
Permitted: Yes  
Wet space: No  
Addition: No  
Conversion: No

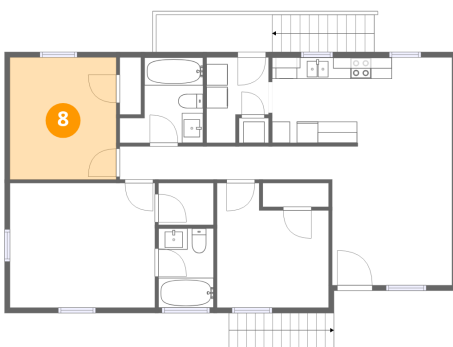
**7** Floor 1 - Kitchen



Dimensions: 11'3" x 8'4"  
Area: 91 sq. ft  
Counted as living area: Yes

Heated: Yes  
Finished: Yes  
Enclosed: Yes  
Contiguous: Yes  
Permitted: Yes  
Wet space: No  
Addition: No  
Conversion: No

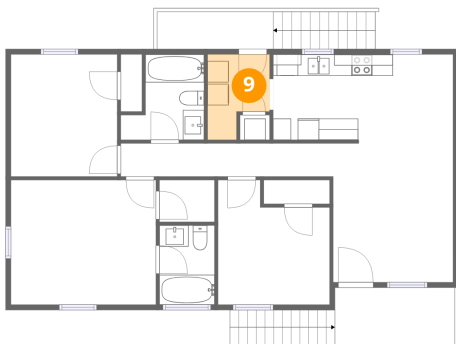
**8** Floor 1 - Bedroom



Dimensions: 10'0" x 11'5"  
Area: 115 sq. ft  
Counted as living area: Yes

Heated: Yes  
Finished: Yes  
Enclosed: Yes  
Contiguous: Yes  
Permitted: Yes  
Wet space: No  
Addition: No  
Conversion: No

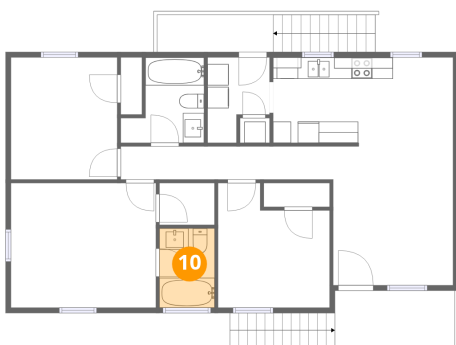
### 9 Floor 1 - Laundry



Dimensions: 5'10" x 8'0"  
Area: 39 sq. ft  
Counted as living area: Yes

Heated: Yes  
Finished: Yes  
Enclosed: Yes  
Contiguous: Yes  
Permitted: Yes  
Wet space: No  
Addition: No  
Conversion: No

### 10 Floor 1 - Bath



Dimensions: 5'2" x 7'5"  
Area: 39 sq. ft  
Counted as living area: Yes

Heated: Yes  
Finished: Yes  
Enclosed: Yes  
Contiguous: Yes  
Permitted: Yes  
Wet space: Yes  
Addition: No  
Conversion: No

### 11 Floor 1 - Dining Area



Dimensions: 5'8" x 8'4"  
Area: 47 sq. ft  
Counted as living area: Yes

Heated: Yes  
Finished: Yes  
Enclosed: Yes  
Contiguous: Yes  
Permitted: Yes  
Wet space: No  
Addition: No  
Conversion: No

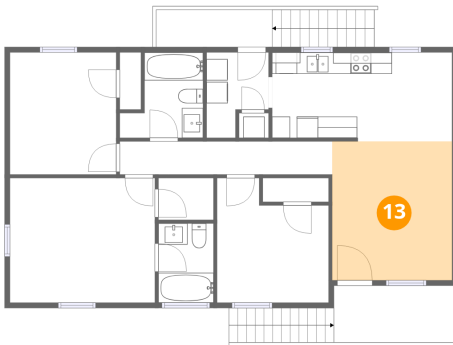
**12** Floor 1 - Primary Bedroom



Dimensions: 13'8" x 11'8"  
Area: 160 sq. ft  
Counted as living area: Yes

Heated: Yes  
Finished: Yes  
Enclosed: Yes  
Contiguous: Yes  
Permitted: Yes  
Wet space: No  
Addition: No  
Conversion: No

**13** Floor 1 - Living Room



Dimensions: 11'3" x 13'0"  
Area: 147 sq. ft  
Counted as living area: Yes

Heated: Yes  
Finished: Yes  
Enclosed: Yes  
Contiguous: Yes  
Permitted: Yes  
Wet space: No  
Addition: No  
Conversion: No