

Home data report

301 Indian Ridge Drive, Moneta, Bedford County, Virginia, United States, 24121



Total Area: 2851 sq. ft

1st Floor: 1117 sq. ft, 2nd Floor: 1734 sq. ft

Excluded: Covered patio 514 sq. ft, Storage 406 sq. ft, Utility 70 sq. ft, Garage 904 sq. ft, Porch 36 sq. ft, Fireplace 13 sq. ft, Walls: 229 sq. ft

Property summary



Home data report

301 Indian Ridge Drive, Moneta, Bedford County, Virginia, United States, 24121



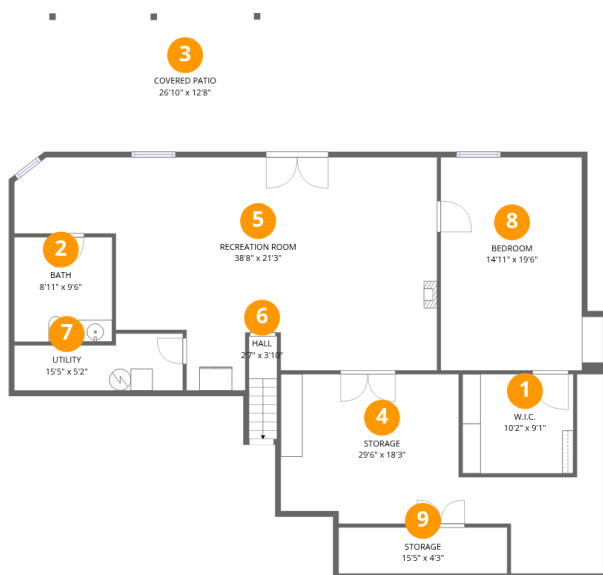
1
Half baths



1
Garages

Home data report

301 Indian Ridge Drive, Moneta, Bedford County, Virginia, United States, 24121



Room dimensions

Floor 1

Total:1117sqft Excluded: 800sqft

#		Dimensions	sqft	Counted as living area
1	W.I.C.	10'2" x 9'1"	92 sq. ft	Yes
2	Bath	8'11" x 9'6"	85 sq. ft	Yes
3	Covered Patio	26'10" x 12'8"	339 sq. ft	No
4	Storage	29'6" x 18'3"	538 sq. ft	No
5	Recreation Room	38'8" x 21'3"	821 sq. ft	Yes
6	Hall	2'7" x 3'10"	10 sq. ft	Yes
7	Utility	15'5" x 5'2"	80 sq. ft	No
8	Bedroom	14'11" x 19'6"	290 sq. ft	Yes
9	Storage	15'5" x 4'3"	65 sq. ft	No

Scan captured on Tue, 31 Mar 2026 17:17:20 GMT

Floor Plan by JCAR Builders. Measurements are highly reliable but not guaranteed.

Home data report

301 Indian Ridge Drive, Moneta, Bedford County, Virginia, United States, 24121



Room dimensions

Floor 2

Total:1734sqft

Excluded: 1143sqft

#		Dimensions	sqft	Counted as living area
10	Hall	3'10" x 11'5"	44 sq. ft	Yes
11	Porch	7'8" x 4'10"	37 sq. ft	No
12	Bedroom	12'4" x 11'0"	135 sq. ft	Yes
13	Bath	9'3" x 10'3"	95 sq. ft	Yes
14	Living Room	16'6" x 20'5"	337 sq. ft	Yes
15	Garage	33'0" x 29'10"	984 sq. ft	No
16	Kitchen	12'7" x 13'11"	175 sq. ft	Yes
17	Laundry	9'1" x 10'3"	93 sq. ft	Yes
18	Covered Patio	15'11" x 11'11"	189 sq. ft	No
19	Bath	8'6" x 5'1"	43 sq. ft	Yes
20	Dining Area	9'1" x 19'2"	174 sq. ft	Yes

Scan captured on Tue, 31 Mar 2026 17:17:20 GMT

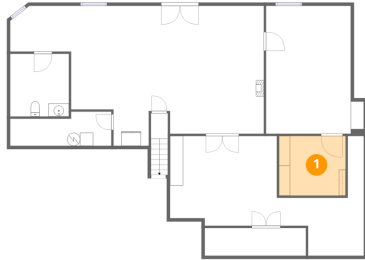
Floor Plan by JCAR Builders. Measurements are highly reliable but not guaranteed.

Home data report

301 Indian Ridge Drive, Moneta, Bedford County, Virginia, United States, 24121

#		Dimensions	sqft	Counted as living area
21	Breakfast Nook	12'7" x 7'5"	93 sq. ft	Yes
22	Primary Bedroom	14'5" x 16'4"	236 sq. ft	Yes
23	Bedroom	11'7" x 13'8"	158 sq. ft	Yes
24	Foyer	5'3" x 12'10"	67 sq. ft	Yes
25	W.I.C.	5'7" x 6'6"	37 sq. ft	Yes

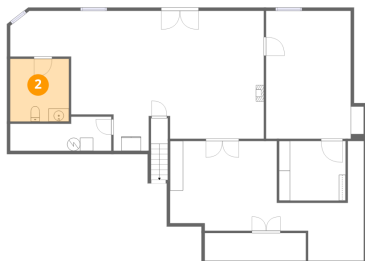
1 Floor 1 - W.I.C.



Dimensions: 10'2" x 9'1"
Area: 92 sq. ft
Counted as living area: Yes

Heated: Yes
Finished: Yes
Enclosed: Yes
Contiguous: Yes
Permitted: Yes
Wet space: No
Addition: No
Conversion: No

2 Floor 1 - Bath

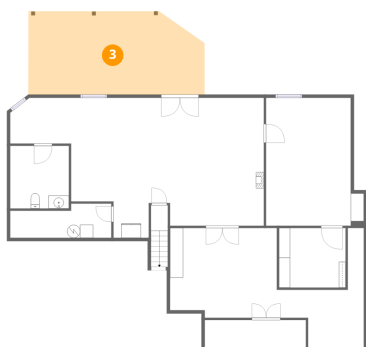


Dimensions: 8'11" x 9'6"
Area: 85 sq. ft
Counted as living area: Yes

Heated: Yes
Finished: Yes
Enclosed: Yes
Contiguous: Yes
Permitted: Yes
Wet space: Yes
Addition: No
Conversion: No

301 Indian Ridge Drive, Moneta, Bedford County, Virginia, United States, 24121

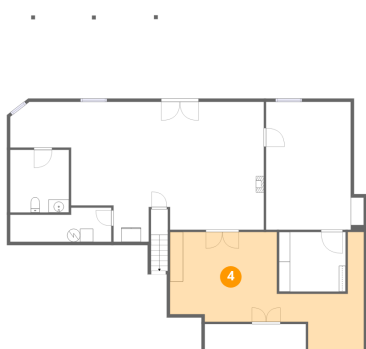
3 Floor 1 - Covered Patio



Dimensions: 26'10" x 12'8"
Area: 339 sq. ft
Counted as living area: No

Heated: No
Finished: No
Enclosed: No
Contiguous: Yes
Permitted: Yes
Wet space: No
Addition: No
Conversion: No

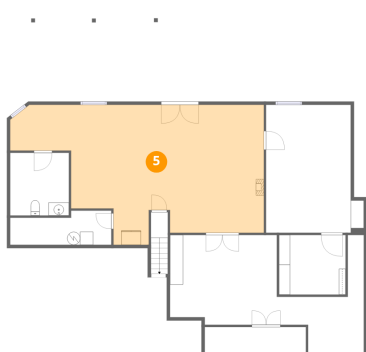
4 Floor 1 - Storage



Dimensions: 29'6" x 18'3"
Area: 538 sq. ft
Counted as living area: No

Heated: No
Finished: No
Enclosed: No
Contiguous: Yes
Permitted: Yes
Wet space: No
Addition: No
Conversion: No

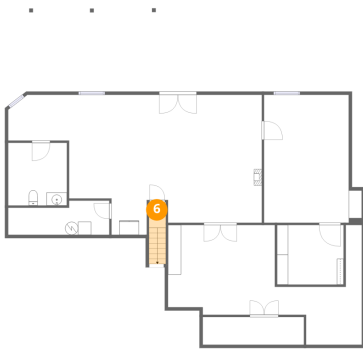
5 Floor 1 - Recreation Room



Dimensions: 38'8" x 21'3"
Area: 821 sq. ft
Counted as living area: Yes

Heated: Yes
Finished: Yes
Enclosed: Yes
Contiguous: Yes
Permitted: Yes
Wet space: No
Addition: No
Conversion: No

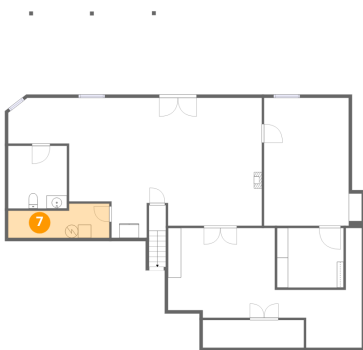
6 Floor 1 - Hall



Dimensions: 2'7" x 3'10"
Area: 10 sq. ft
Counted as living area: Yes

Heated: Yes
Finished: Yes
Enclosed: Yes
Contiguous: Yes
Permitted: Yes
Wet space: No
Addition: No
Conversion: No

7 Floor 1 - Utility



Dimensions: 15'5" x 5'2"
Area: 80 sq. ft
Counted as living area: No

Heated: Yes
Finished: No
Enclosed: Yes
Contiguous: Yes
Permitted: Yes
Wet space: No
Addition: No
Conversion: No

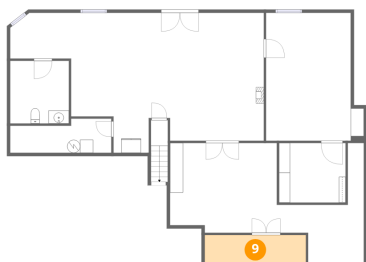
8 Floor 1 - Bedroom



Dimensions: 14'11" x 19'6"
Area: 290 sq. ft
Counted as living area: Yes

Heated: Yes
Finished: Yes
Enclosed: Yes
Contiguous: Yes
Permitted: Yes
Wet space: No
Addition: No
Conversion: No

9 Floor 1 - Storage



Dimensions: 15'5" x 4'3"
Area: 65 sq. ft
Counted as living area: No

Heated: No
Finished: No
Enclosed: No
Contiguous: Yes
Permitted: Yes
Wet space: No
Addition: No
Conversion: No

10 Floor 2 - Hall



Dimensions: 3'10" x 11'5"
Area: 44 sq. ft
Counted as living area: Yes

Heated: Yes
Finished: Yes
Enclosed: Yes
Contiguous: Yes
Permitted: Yes
Wet space: No
Addition: No
Conversion: No

11 Floor 2 - Porch



Dimensions: 7'8" x 4'10"
Area: 37 sq. ft
Counted as living area: No

Heated: No
Finished: No
Enclosed: No
Contiguous: Yes
Permitted: Yes
Wet space: No
Addition: No
Conversion: No

301 Indian Ridge Drive, Moneta, Bedford County, Virginia, United States, 24121

12 Floor 2 - Bedroom



Dimensions: 12'4" x 11'0"
Area: 135 sq. ft
Counted as living area: Yes

Heated: Yes
Finished: Yes
Enclosed: Yes
Contiguous: Yes
Permitted: Yes
Wet space: No
Addition: No
Conversion: No

13 Floor 2 - Bath



Dimensions: 9'3" x 10'3"
Area: 95 sq. ft
Counted as living area: Yes

Heated: Yes
Finished: Yes
Enclosed: Yes
Contiguous: Yes
Permitted: Yes
Wet space: Yes
Addition: No
Conversion: No

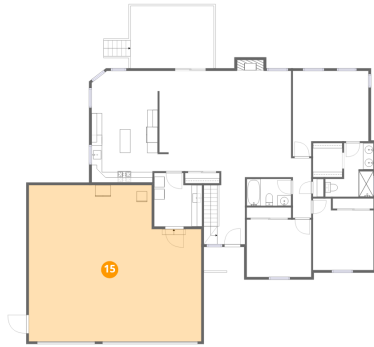
14 Floor 2 - Living Room



Dimensions: 16'6" x 20'5"
Area: 337 sq. ft
Counted as living area: Yes

Heated: Yes
Finished: Yes
Enclosed: Yes
Contiguous: Yes
Permitted: Yes
Wet space: No
Addition: No
Conversion: No

15 Floor 2 - Garage



Dimensions: 33'0" x 29'10"
Area: 984 sq. ft
Counted as living area: No

Heated: No
Finished: No
Enclosed: Yes
Contiguous: Yes
Permitted: Yes
Wet space: No
Addition: No
Conversion: No

16 Floor 2 - Kitchen



Dimensions: 12'7" x 13'11"
Area: 175 sq. ft
Counted as living area: Yes

Heated: Yes
Finished: Yes
Enclosed: Yes
Contiguous: Yes
Permitted: Yes
Wet space: No
Addition: No
Conversion: No

17 Floor 2 - Laundry



Dimensions: 9'1" x 10'3"
Area: 93 sq. ft
Counted as living area: Yes

Heated: Yes
Finished: Yes
Enclosed: Yes
Contiguous: Yes
Permitted: Yes
Wet space: No
Addition: No
Conversion: No

18 Floor 2 - Covered Patio



Dimensions: 15'11" x 11'11"
Area: 189 sq. ft
Counted as living area: No

Heated: No
Finished: No
Enclosed: No
Contiguous: Yes
Permitted: Yes
Wet space: No
Addition: No
Conversion: No

19 Floor 2 - Bath



Dimensions: 8'6" x 5'1"
Area: 43 sq. ft
Counted as living area: Yes

Heated: Yes
Finished: Yes
Enclosed: Yes
Contiguous: Yes
Permitted: Yes
Wet space: Yes
Addition: No
Conversion: No

20 Floor 2 - Dining Area



Dimensions: 9'1" x 19'2"
Area: 174 sq. ft
Counted as living area: Yes

Heated: Yes
Finished: Yes
Enclosed: Yes
Contiguous: Yes
Permitted: Yes
Wet space: No
Addition: No
Conversion: No

301 Indian Ridge Drive, Moneta, Bedford County, Virginia, United States, 24121

21 Floor 2 - Breakfast Nook



Dimensions: 12'7" x 7'5"
Area: 93 sq. ft
Counted as living area: Yes

Heated: Yes
Finished: Yes
Enclosed: Yes
Contiguous: Yes
Permitted: Yes
Wet space: No
Addition: No
Conversion: No

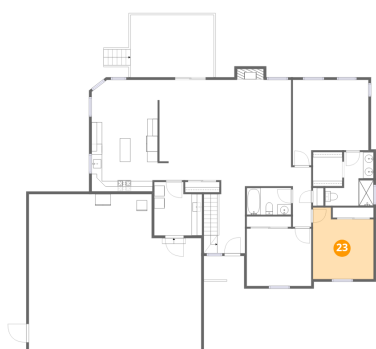
22 Floor 2 - Primary Bedroom



Dimensions: 14'5" x 16'4"
Area: 236 sq. ft
Counted as living area: Yes

Heated: Yes
Finished: Yes
Enclosed: Yes
Contiguous: Yes
Permitted: Yes
Wet space: No
Addition: No
Conversion: No

23 Floor 2 - Bedroom



Dimensions: 11'7" x 13'8"
Area: 158 sq. ft
Counted as living area: Yes

Heated: Yes
Finished: Yes
Enclosed: Yes
Contiguous: Yes
Permitted: Yes
Wet space: No
Addition: No
Conversion: No

301 Indian Ridge Drive, Moneta, Bedford County, Virginia, United States, 24121

24 Floor 2 - Foyer



Dimensions: 5'3" x 12'10"
Area: 67 sq. ft
Counted as living area: Yes

Heated: Yes
Finished: Yes
Enclosed: Yes
Contiguous: Yes
Permitted: Yes
Wet space: No
Addition: No
Conversion: No

25 Floor 2 - W.I.C.



Dimensions: 5'7" x 6'6"
Area: 37 sq. ft
Counted as living area: Yes

Heated: Yes
Finished: Yes
Enclosed: Yes
Contiguous: Yes
Permitted: Yes
Wet space: No
Addition: No
Conversion: No