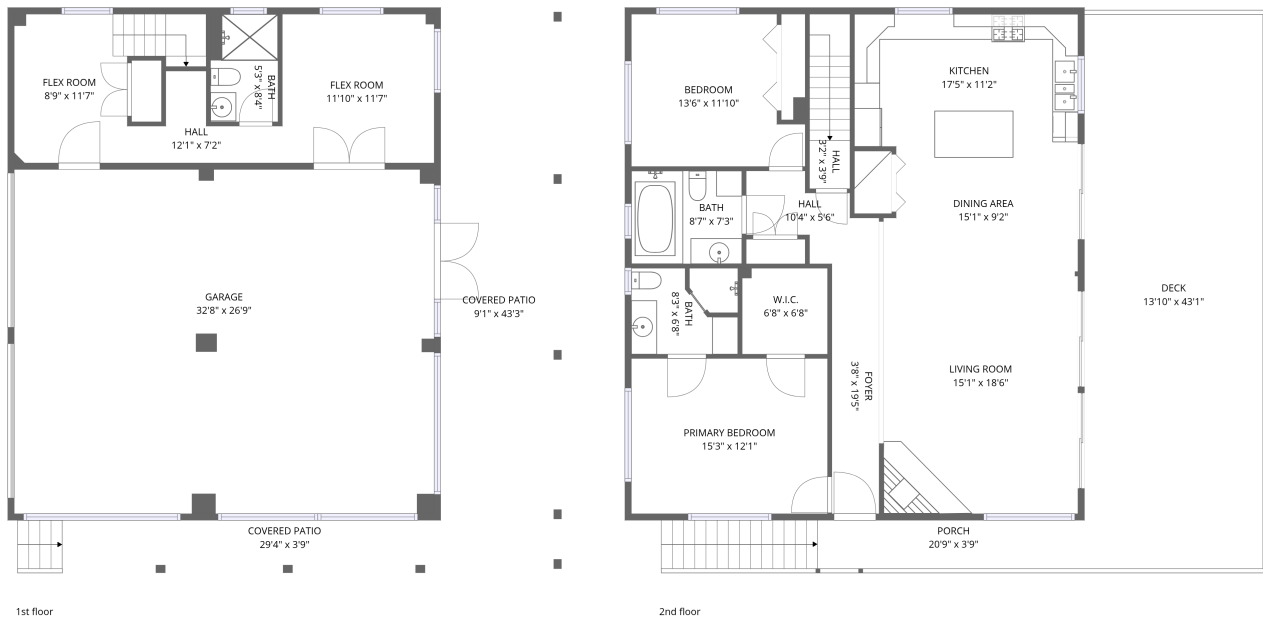


Home data report

1647 Seabreeze Drive, Pointe Alexis, Tarpon Springs, Pinellas County, Florida, United States, 34689



Total Area: 1726 sq. ft

1st Floor: 378 sq. ft, 2nd Floor: 1348 sq. ft

Excluded: Garage 873 sq. ft, Covered patio 516 sq. ft, Deck 597 sq. ft, Porch 124 sq. ft, Walls: 163 sq. ft

Property summary



2
Floors



2
Bedrooms

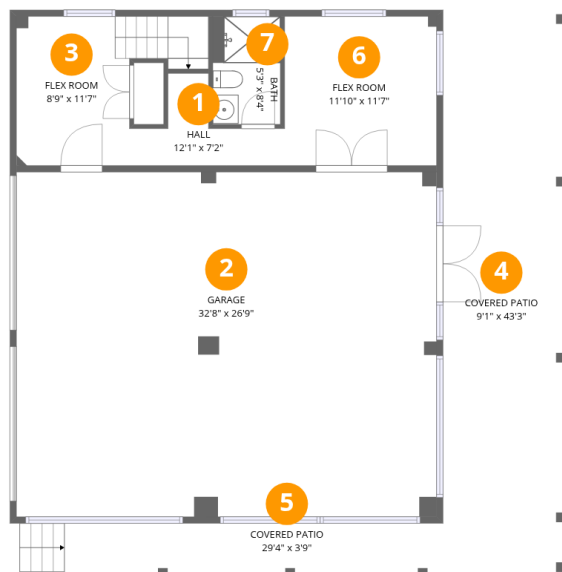


3
Bathrooms



1
Garages

1647 Seabreeze Drive, Pointe Alexis, Tarpon Springs, Pinellas County, Florida, United States, 34689



Room dimensions

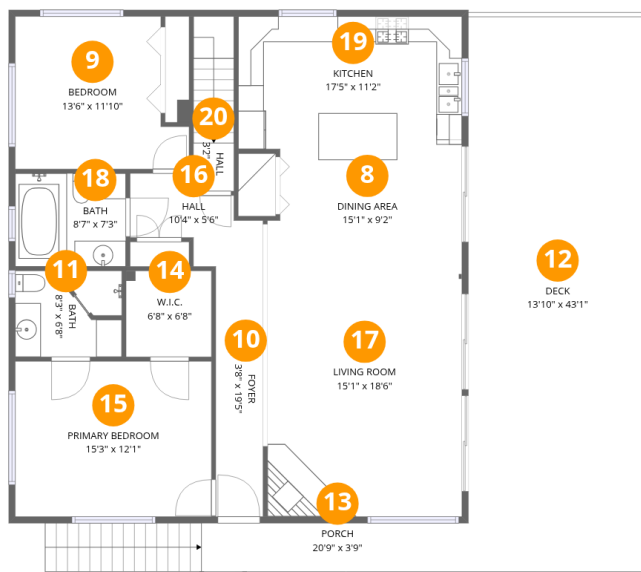
Floor 1

Total:378sqft

Excluded: 1389sqft

#		Dimensions	sqft	Counted as living area
1	Hall	12'1" x 7'2"	48 sq. ft	Yes
2	Garage	32'8" x 26'9"	873 sq. ft	No
3	Flex Room	8'9" x 11'7"	124 sq. ft	Yes
4	Covered Patio	9'1" x 43'3"	392 sq. ft	No
5	Covered Patio	29'4" x 3'9"	124 sq. ft	No
6	Flex Room	11'10" x 11'7"	137 sq. ft	Yes
7	Bath	5'3" x 8'4"	44 sq. ft	Yes

1647 Seabreeze Drive, Pointe Alexis, Tarpon Springs, Pinellas County, Florida, United States, 34689



Room dimensions

Floor 2

Total:1348sqft

Excluded: 721sqft

#		Dimensions	sqft	Counted as living area
8	Dining Area	15'1" x 9'2"	134 sq. ft	Yes
9	Bedroom	13'6" x 11'10"	141 sq. ft	Yes
10	Foyer	3'8" x 19'5"	71 sq. ft	Yes
11	Bath	8'3" x 6'8"	54 sq. ft	Yes
12	Deck	13'10" x 43'1"	597 sq. ft	No
13	Porch	20'9" x 3'9"	124 sq. ft	No
14	W.I.C.	6'8" x 6'8"	44 sq. ft	Yes
15	Primary Bedroom	15'3" x 12'1"	184 sq. ft	Yes
16	Hall	10'4" x 5'6"	49 sq. ft	Yes
17	Living Room	15'1" x 18'6"	280 sq. ft	Yes
18	Bath	8'7" x 7'3"	62 sq. ft	Yes

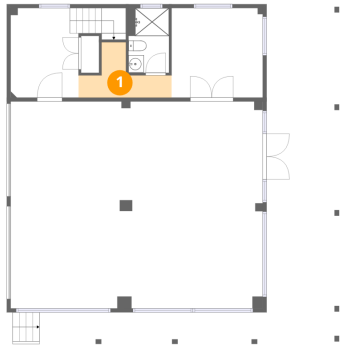
Home data report

1647 Seabreeze Drive, Pointe Alexis, Tarpon Springs, Pinellas County, Florida, United States, 34689

#		Dimensions	sqft	Counted as living area
19	Kitchen	17'5" x 11'2"	191 sq. ft	Yes
20	Hall	3'2" x 3'9"	43 sq. ft	Yes

1647 Seabreeze Drive, Pointe Alexis, Tarpon Springs, Pinellas County, Florida, United States, 34689

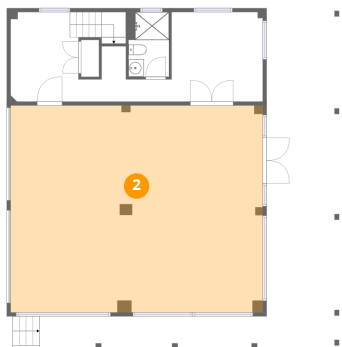
1 Floor 1 - Hall



Dimensions: 12'1" x 7'2"
Area: 48 sq. ft
Counted as living area: Yes

Heated: Yes
Finished: Yes
Enclosed: Yes
Contiguous: Yes
Permitted: Yes
Wet space: No
Addition: No
Conversion: No

2 Floor 1 - Garage

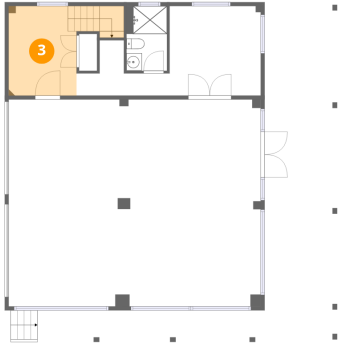


Dimensions: 32'8" x 26'9"
Area: 873 sq. ft
Counted as living area: No

Heated: No
Finished: No
Enclosed: Yes
Contiguous: Yes
Permitted: Yes
Wet space: No
Addition: No
Conversion: No

1647 Seabreeze Drive, Pointe Alexis, Tarpon Springs, Pinellas County, Florida, United States, 34689

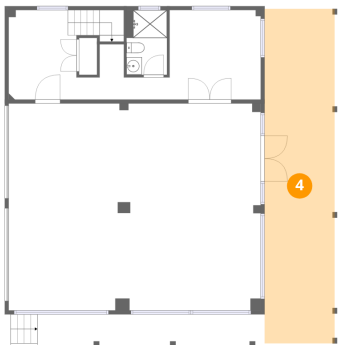
3 Floor 1 - Flex Room



Dimensions: 8'9" x 11'7"
Area: 124 sq. ft
Counted as living area: Yes

Heated: Yes
Finished: Yes
Enclosed: Yes
Contiguous: Yes
Permitted: Yes
Wet space: No
Addition: No
Conversion: No

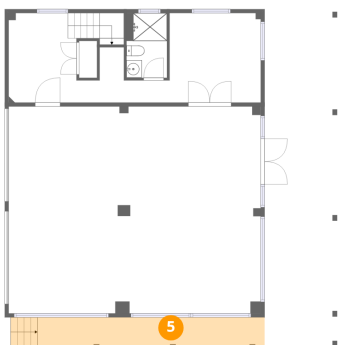
4 Floor 1 - Covered Patio



Dimensions: 9'1" x 43'3"
Area: 392 sq. ft
Counted as living area: No

Heated: No
Finished: No
Enclosed: No
Contiguous: Yes
Permitted: Yes
Wet space: No
Addition: No
Conversion: No

5 Floor 1 - Covered Patio

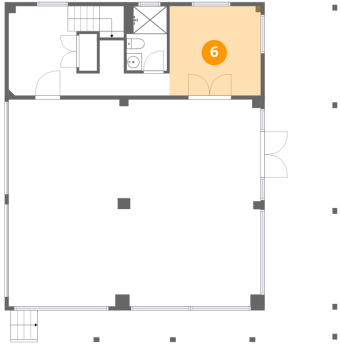


Dimensions: 29'4" x 3'9"
Area: 124 sq. ft
Counted as living area: No

Heated: No
Finished: No
Enclosed: No
Contiguous: Yes
Permitted: Yes
Wet space: No
Addition: No
Conversion: No

1647 Seabreeze Drive, Pointe Alexis, Tarpon Springs, Pinellas County, Florida, United States, 34689

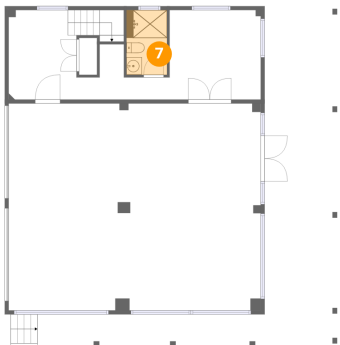
6 Floor 1 - Flex Room



Dimensions: 11'10" x 11'7"
Area: 137 sq. ft
Counted as living area: Yes

Heated: Yes
Finished: Yes
Enclosed: Yes
Contiguous: Yes
Permitted: Yes
Wet space: No
Addition: No
Conversion: No

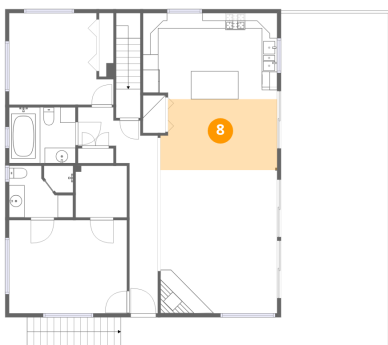
7 Floor 1 - Bath



Dimensions: 5'3" x 8'4"
Area: 44 sq. ft
Counted as living area: Yes

Heated: Yes
Finished: Yes
Enclosed: Yes
Contiguous: Yes
Permitted: Yes
Wet space: Yes
Addition: No
Conversion: No

8 Floor 2 - Dining Area

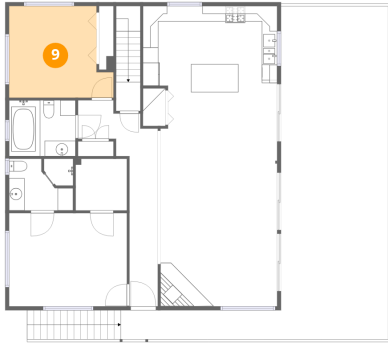


Dimensions: 15'1" x 9'2"
Area: 134 sq. ft
Counted as living area: Yes

Heated: Yes
Finished: Yes
Enclosed: Yes
Contiguous: Yes
Permitted: Yes
Wet space: No
Addition: No
Conversion: No

1647 Seabreeze Drive, Pointe Alexis, Tarpon Springs, Pinellas County, Florida, United States, 34689

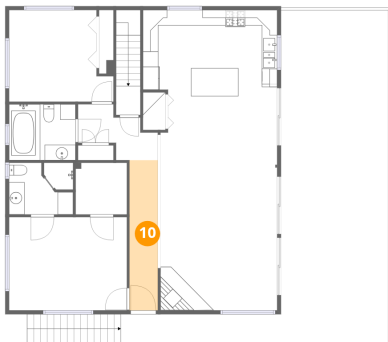
9 Floor 2 - Bedroom



Dimensions: 13'6" x 11'10"
Area: 141 sq. ft
Counted as living area: Yes

Heated: Yes
Finished: Yes
Enclosed: Yes
Contiguous: Yes
Permitted: Yes
Wet space: No
Addition: No
Conversion: No

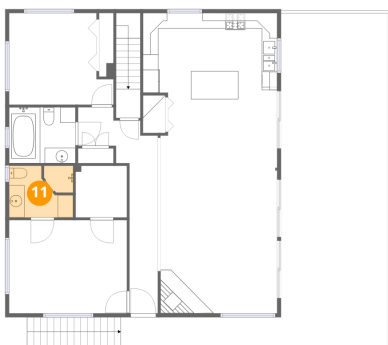
10 Floor 2 - Foyer



Dimensions: 3'8" x 19'5"
Area: 71 sq. ft
Counted as living area: Yes

Heated: Yes
Finished: Yes
Enclosed: Yes
Contiguous: Yes
Permitted: Yes
Wet space: No
Addition: No
Conversion: No

11 Floor 2 - Bath

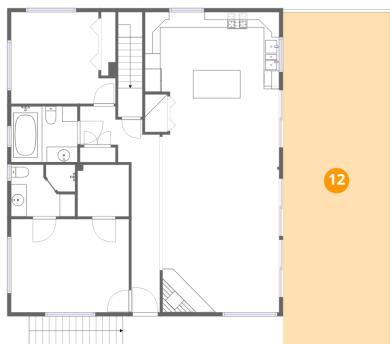


Dimensions: 8'3" x 6'8"
Area: 54 sq. ft
Counted as living area: Yes

Heated: Yes
Finished: Yes
Enclosed: Yes
Contiguous: Yes
Permitted: Yes
Wet space: Yes
Addition: No
Conversion: No

1647 Seabreeze Drive, Pointe Alexis, Tarpon Springs, Pinellas County, Florida, United States, 34689

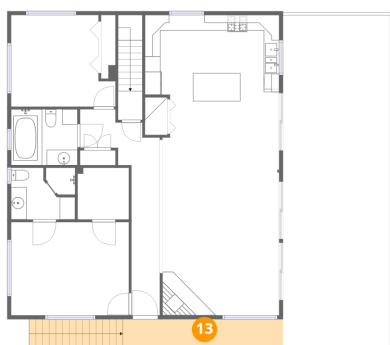
12 Floor 2 - Deck



Dimensions: 13'10" x 43'1"
Area: 597 sq. ft
Counted as living area: No

Heated: No
Finished: No
Enclosed: No
Contiguous: Yes
Permitted: Yes
Wet space: No
Addition: No
Conversion: No

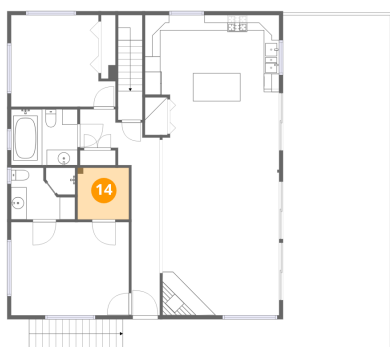
13 Floor 2 - Porch



Dimensions: 20'9" x 3'9"
Area: 124 sq. ft
Counted as living area: No

Heated: No
Finished: No
Enclosed: No
Contiguous: Yes
Permitted: Yes
Wet space: No
Addition: No
Conversion: No

14 Floor 2 - W.I.C.

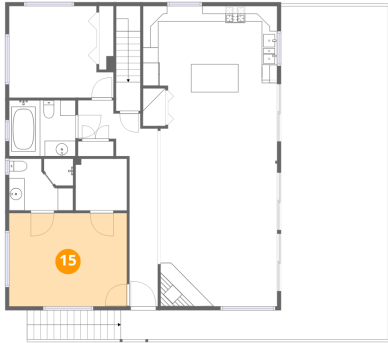


Dimensions: 6'8" x 6'8"
Area: 44 sq. ft
Counted as living area: Yes

Heated: Yes
Finished: Yes
Enclosed: Yes
Contiguous: Yes
Permitted: Yes
Wet space: No
Addition: No
Conversion: No

1647 Seabreeze Drive, Pointe Alexis, Tarpon Springs, Pinellas County, Florida, United States, 34689

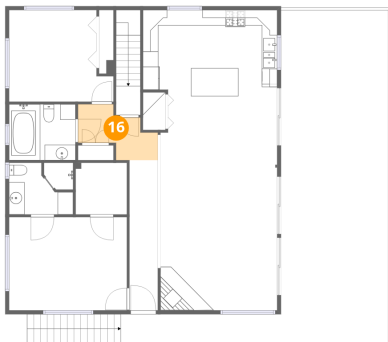
15 Floor 2 - Primary Bedroom



Dimensions: 15'3" x 12'1"
Area: 184 sq. ft
Counted as living area: Yes

Heated: Yes
Finished: Yes
Enclosed: Yes
Contiguous: Yes
Permitted: Yes
Wet space: No
Addition: No
Conversion: No

16 Floor 2 - Hall



Dimensions: 10'4" x 5'6"
Area: 49 sq. ft
Counted as living area: Yes

Heated: Yes
Finished: Yes
Enclosed: Yes
Contiguous: Yes
Permitted: Yes
Wet space: No
Addition: No
Conversion: No

17 Floor 2 - Living Room

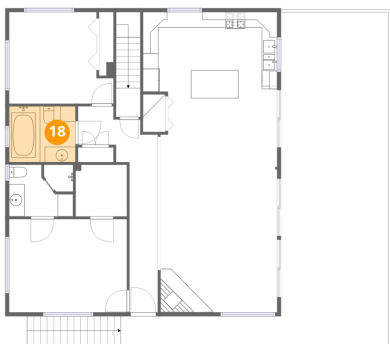


Dimensions: 15'1" x 18'6"
Area: 280 sq. ft
Counted as living area: Yes

Heated: Yes
Finished: Yes
Enclosed: Yes
Contiguous: Yes
Permitted: Yes
Wet space: No
Addition: No
Conversion: No

1647 Seabreeze Drive, Pointe Alexis, Tarpon Springs, Pinellas County, Florida, United States, 34689

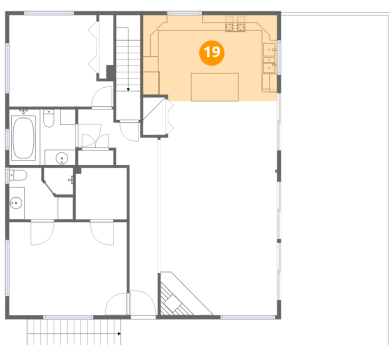
18 Floor 2 - Bath



Dimensions: 8'7" x 7'3"
Area: 62 sq. ft
Counted as living area: Yes

Heated: Yes
Finished: Yes
Enclosed: Yes
Contiguous: Yes
Permitted: Yes
Wet space: Yes
Addition: No
Conversion: No

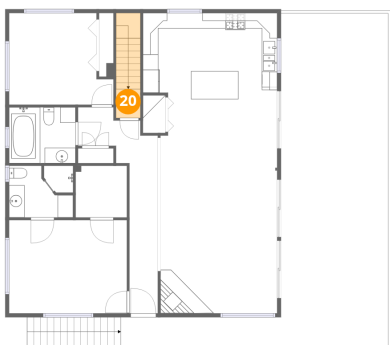
19 Floor 2 - Kitchen



Dimensions: 17'5" x 11'2"
Area: 191 sq. ft
Counted as living area: Yes

Heated: Yes
Finished: Yes
Enclosed: Yes
Contiguous: Yes
Permitted: Yes
Wet space: No
Addition: No
Conversion: No

20 Floor 2 - Hall



Dimensions: 3'2" x 3'9"
Area: 43 sq. ft
Counted as living area: Yes

Heated: Yes
Finished: Yes
Enclosed: Yes
Contiguous: Yes
Permitted: Yes
Wet space: No
Addition: No
Conversion: No