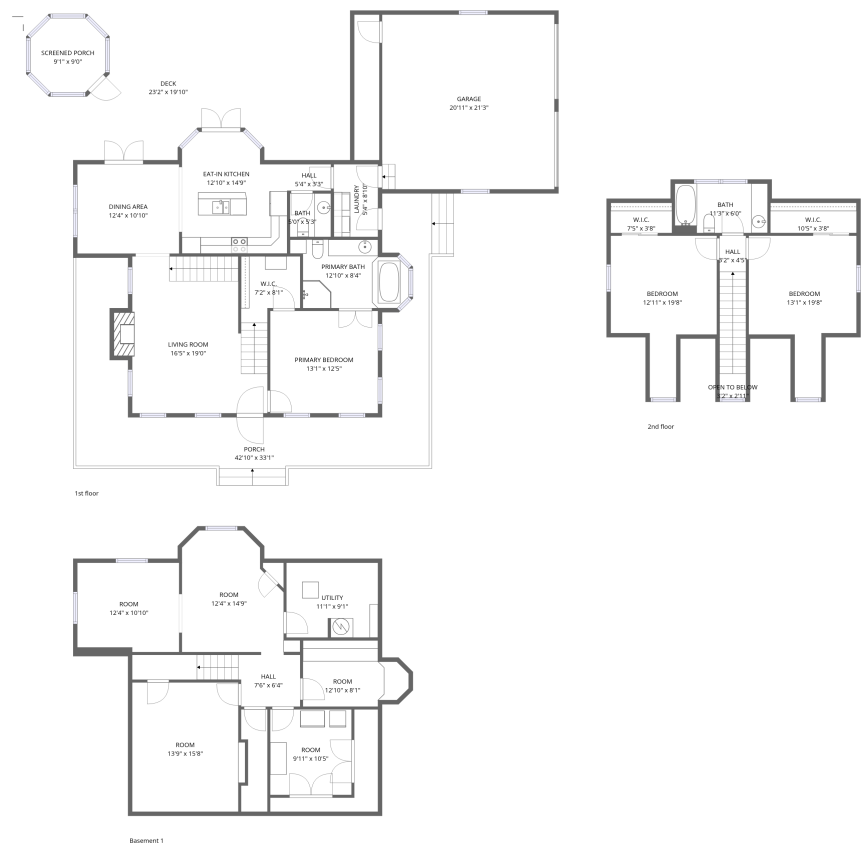


Home data report

1650 Purbrook Rd,Bracebridge,ON,CA



Total Area: 2583 sq. ft

Basement 1: 984 sq. ft, 1st Floor: 1032 sq. ft, 2nd Floor: 567 sq. ft

Excluded: Undefined 89 sq. ft, Garage 444 sq. ft, Screened porch 70 sq. ft, Porch 534 sq. ft, Deck 326 sq. ft, Fireplace 14 sq. ft, Open to below 9 sq. ft, Walls: 285 sq. ft

Property summary

 **3** Floors

 **3** Bedrooms

 **2** Bathrooms

Home data report

1650 Purbrook Rd,Bracebridge,ON,CA



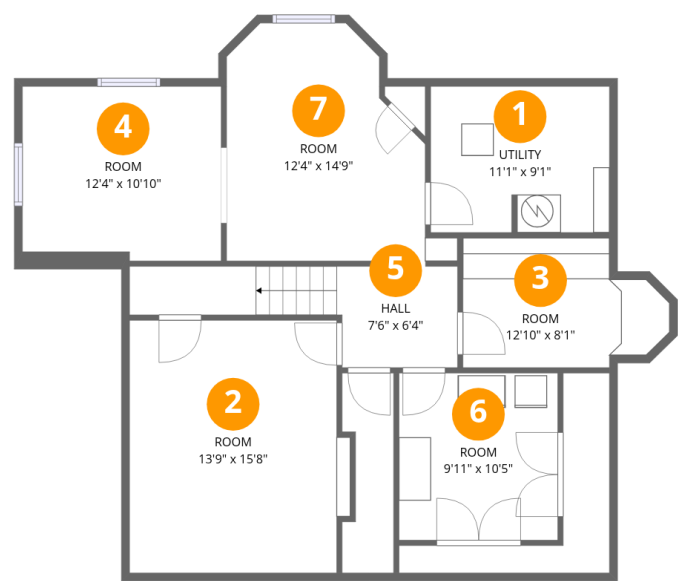
1
Half baths



1
Garages

Home data report

1650 Purbrook Rd,Bracebridge,ON,CA



Room dimensions

Floor 1 Below grade Total:984sqft Excluded: 35sqft

#		Dimensions	sqft	Counted as living area
1	Utility	11'1" x 9'1"	101 sq. ft	Yes
2	Room	13'9" x 15'8"	216 sq. ft	Yes
3	Room	12'10" x 8'1"	104 sq. ft	Yes
4	Room	12'4" x 10'10"	134 sq. ft	Yes
5	Hall	7'6" x 6'4"	47 sq. ft	Yes
6	Room	9'11" x 10'5"	103 sq. ft	Yes
7	Room	12'4" x 14'9"	182 sq. ft	Yes

Home data report

1650 Purbrook Rd,Bracebridge,ON,CA



Room dimensions

Floor 2 Total:1032sqft Excluded: 1442sqft

#		Dimensions	sqft	Counted as living area
8	Living Room	16'5" x 19'0"	312 sq. ft	Yes
9	Eat-in Kitchen	12'10" x 14'9"	189 sq. ft	Yes
10	Screened Porch	9'1" x 9'0"	82 sq. ft	No
11	W.I.C.	7'2" x 8'1"	58 sq. ft	Yes
12	Porch	42'10" x 33'1"	1416 sq. ft	No
13	Dining Area	12'4" x 10'10"	134 sq. ft	Yes
14	Bath	5'0" x 5'3"	26 sq. ft	Yes
15	Deck	23'2" x 19'10"	461 sq. ft	No
16	Primary Bedroom	13'1" x 12'5"	163 sq. ft	Yes
17	Primary Bath	12'10" x 8'4"	107 sq. ft	Yes
18	Garage	20'11" x 21'3"	444 sq. ft	No

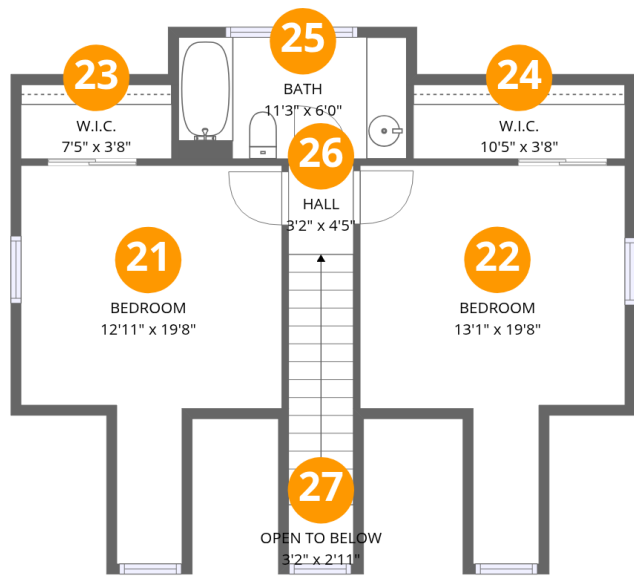
Home data report

1650 Purbrook Rd,Bracebridge,ON,CA

#		Dimensions	sqft	Counted as living area
19	Hall	5'4" x 3'3"	17 sq. ft	Yes
20	Laundry	5'4" x 8'10"	47 sq. ft	Yes

Home data report

1650 Purbrook Rd,Bracebridge,ON,CA

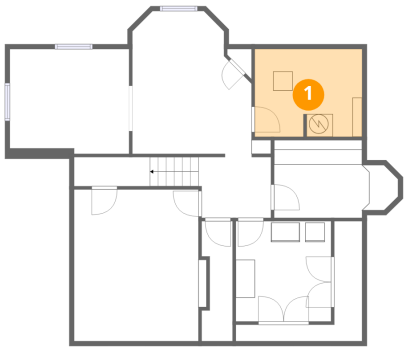


Room dimensions

Floor 3 Total:567sqft Excluded: 9sqft

#		Dimensions	sqft	Counted as living area
21	Bedroom	12'11" x 19'8"	254 sq. ft	Yes
22	Bedroom	13'1" x 19'8"	258 sq. ft	Yes
23	W.I.C.	7'5" x 3'8"	27 sq. ft	Yes
24	W.I.C.	10'5" x 3'8"	38 sq. ft	Yes
25	Bath	11'3" x 6'0"	68 sq. ft	Yes
26	Hall	3'2" x 4'5"	14 sq. ft	Yes
27	Open To Below	3'2" x 2'11"	9 sq. ft	No

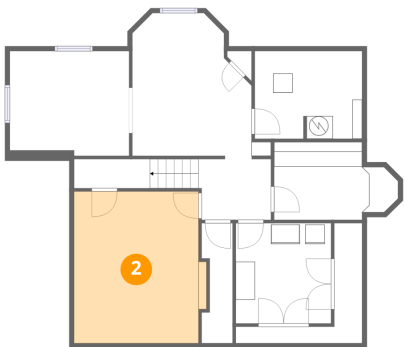
1 Floor 1 - Utility



Dimensions: 11'1" x 9'1"
Area: 101 sq. ft
Counted as living area: Yes

Heated: Yes
Finished: Yes
Enclosed: Yes
Contiguous: Yes
Permitted: Yes
Wet space: No
Addition: No
Conversion: No

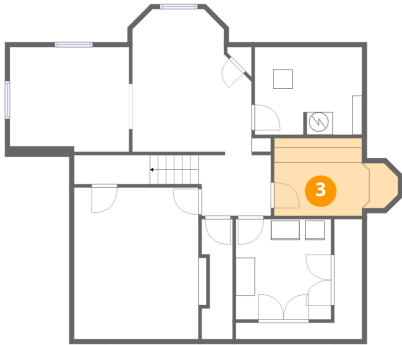
2 Floor 1 - Room



Dimensions: 13'9" x 15'8"
Area: 216 sq. ft
Counted as living area: Yes

Heated: Yes
Finished: Yes
Enclosed: Yes
Contiguous: Yes
Permitted: Yes
Wet space: No
Addition: No
Conversion: No

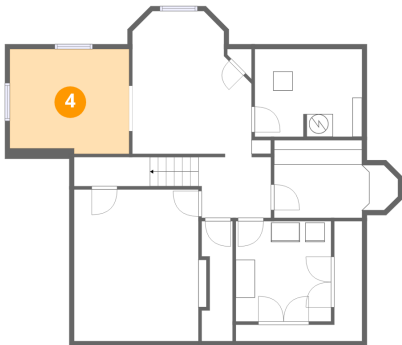
3 Floor 1 - Room



Dimensions: 12'10" x 8'1"
Area: 104 sq. ft
Counted as living area: Yes

Heated: Yes
Finished: Yes
Enclosed: Yes
Contiguous: Yes
Permitted: Yes
Wet space: No
Addition: No
Conversion: No

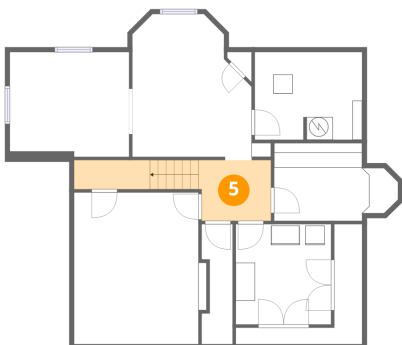
4 Floor 1 - Room



Dimensions: 12'4" x 10'10"
Area: 134 sq. ft
Counted as living area: Yes

Heated: Yes
Finished: Yes
Enclosed: Yes
Contiguous: Yes
Permitted: Yes
Wet space: No
Addition: No
Conversion: No

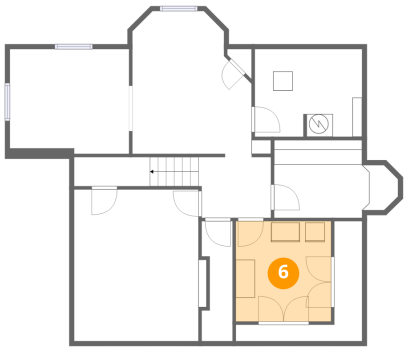
5 Floor 1 - Hall



Dimensions: 7'6" x 6'4"
Area: 47 sq. ft
Counted as living area: Yes

Heated: Yes
Finished: Yes
Enclosed: Yes
Contiguous: Yes
Permitted: Yes
Wet space: No
Addition: No
Conversion: No

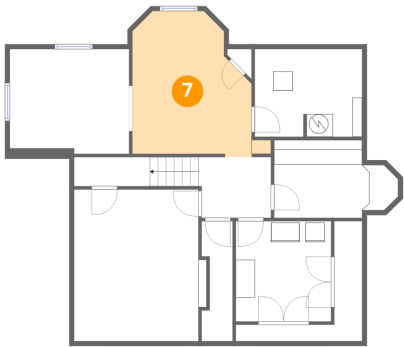
6 Floor 1 - Room



Dimensions: 9'11" x 10'5"
Area: 103 sq. ft
Counted as living area: Yes

Heated: Yes
Finished: Yes
Enclosed: Yes
Contiguous: Yes
Permitted: Yes
Wet space: No
Addition: No
Conversion: No

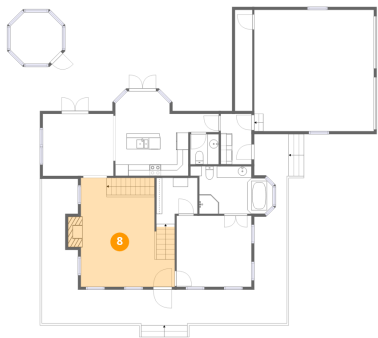
7 Floor 1 - Room



Dimensions: 12'4" x 14'9"
Area: 182 sq. ft
Counted as living area: Yes

Heated: Yes
Finished: Yes
Enclosed: Yes
Contiguous: Yes
Permitted: Yes
Wet space: No
Addition: No
Conversion: No

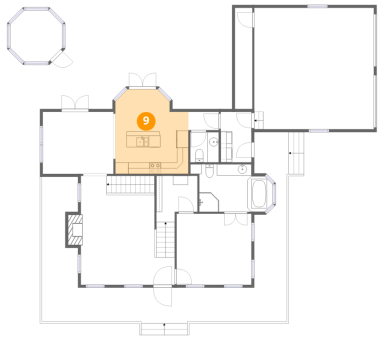
8 Floor 2 - Living Room



Dimensions: 16'5" x 19'0"
Area: 312 sq. ft
Counted as living area: Yes

Heated: Yes
Finished: Yes
Enclosed: Yes
Contiguous: Yes
Permitted: Yes
Wet space: No
Addition: No
Conversion: No

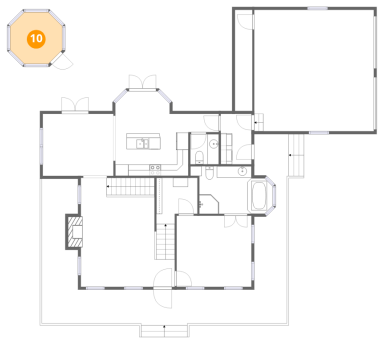
9 Floor 2 - Eat-in Kitchen



Dimensions: 12'10" x 14'9"
Area: 189 sq. ft
Counted as living area: Yes

Heated: Yes
Finished: Yes
Enclosed: Yes
Contiguous: Yes
Permitted: Yes
Wet space: No
Addition: No
Conversion: No

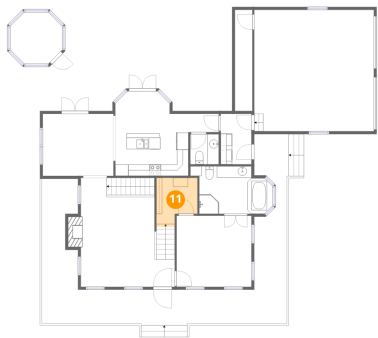
10 Floor 2 - Screened Porch



Dimensions: 9'1" x 9'0"
Area: 82 sq. ft
Counted as living area: No

Heated: No
Finished: No
Enclosed: No
Contiguous: Yes
Permitted: Yes
Wet space: No
Addition: No
Conversion: No

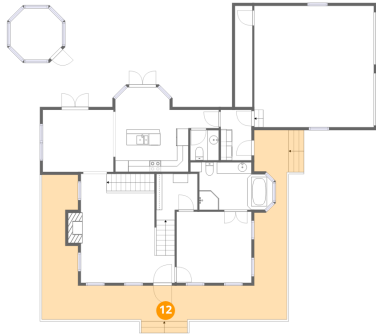
11 Floor 2 - W.I.C.



Dimensions: 7'2" x 8'1"
Area: 58 sq. ft
Counted as living area: Yes

Heated: Yes
Finished: Yes
Enclosed: Yes
Contiguous: Yes
Permitted: Yes
Wet space: No
Addition: No
Conversion: No

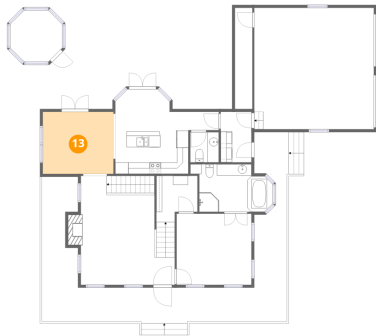
12 Floor 2 - Porch



Dimensions: 42'10" x 33'1"
Area: 1416 sq. ft
Counted as living area: No

Heated: No
Finished: No
Enclosed: No
Contiguous: Yes
Permitted: Yes
Wet space: No
Addition: No
Conversion: No

13 Floor 2 - Dining Area



Dimensions: 12'4" x 10'10"
Area: 134 sq. ft
Counted as living area: Yes

Heated: Yes
Finished: Yes
Enclosed: Yes
Contiguous: Yes
Permitted: Yes
Wet space: No
Addition: No
Conversion: No

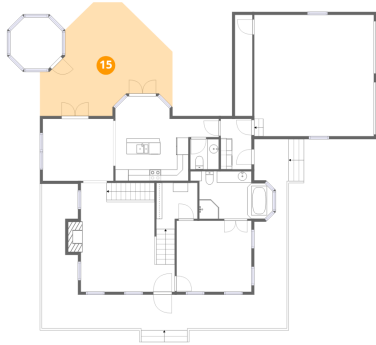
14 Floor 2 - Bath



Dimensions: 5'0" x 5'3"
Area: 26 sq. ft
Counted as living area: Yes

Heated: Yes
Finished: Yes
Enclosed: Yes
Contiguous: Yes
Permitted: Yes
Wet space: Yes
Addition: No
Conversion: No

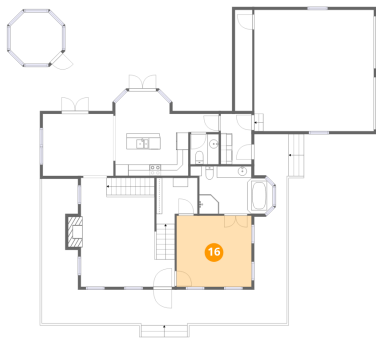
15 Floor 2 - Deck



Dimensions: 23'2" x 19'10"
Area: 461 sq. ft
Counted as living area: No

Heated: No
Finished: No
Enclosed: No
Contiguous: Yes
Permitted: Yes
Wet space: No
Addition: No
Conversion: No

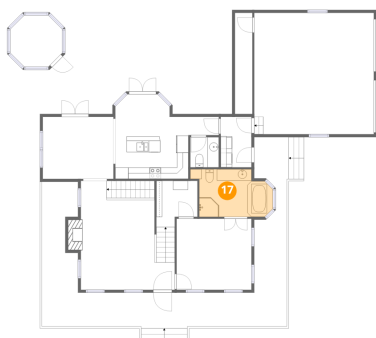
16 Floor 2 - Primary Bedroom



Dimensions: 13'1" x 12'5"
Area: 163 sq. ft
Counted as living area: Yes

Heated: Yes
Finished: Yes
Enclosed: Yes
Contiguous: Yes
Permitted: Yes
Wet space: No
Addition: No
Conversion: No

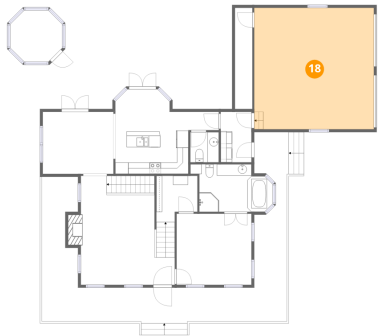
17 Floor 2 - Primary Bath



Dimensions: 12'10" x 8'4"
Area: 107 sq. ft
Counted as living area: Yes

Heated: Yes
Finished: Yes
Enclosed: Yes
Contiguous: Yes
Permitted: Yes
Wet space: Yes
Addition: No
Conversion: No

18 Floor 2 - Garage



Dimensions: 20'11" x 21'3"
Area: 444 sq. ft
Counted as living area: No

Heated: No
Finished: No
Enclosed: Yes
Contiguous: Yes
Permitted: Yes
Wet space: No
Addition: No
Conversion: No

19 Floor 2 - Hall



Dimensions: 5'4" x 3'3"
Area: 17 sq. ft
Counted as living area: Yes

Heated: Yes
Finished: Yes
Enclosed: Yes
Contiguous: Yes
Permitted: Yes
Wet space: No
Addition: No
Conversion: No

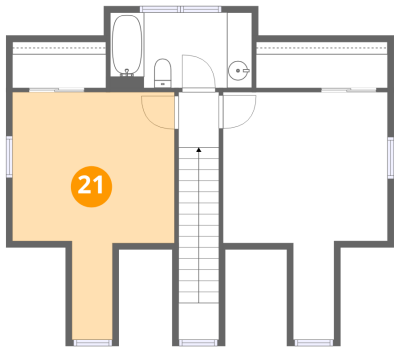
20 Floor 2 - Laundry



Dimensions: 5'4" x 8'10"
Area: 47 sq. ft
Counted as living area: Yes

Heated: Yes
Finished: Yes
Enclosed: Yes
Contiguous: Yes
Permitted: Yes
Wet space: No
Addition: No
Conversion: No

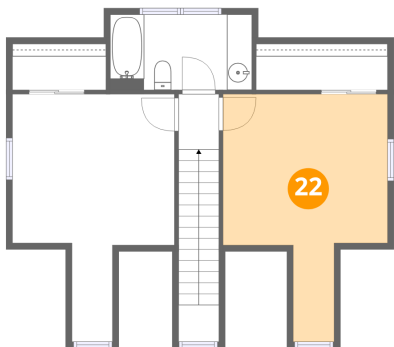
21 Floor 3 - Bedroom



Dimensions: 12'11" x 19'8"
Area: 254 sq. ft
Counted as living area: Yes

Heated: Yes
Finished: Yes
Enclosed: Yes
Contiguous: Yes
Permitted: Yes
Wet space: No
Addition: No
Conversion: No

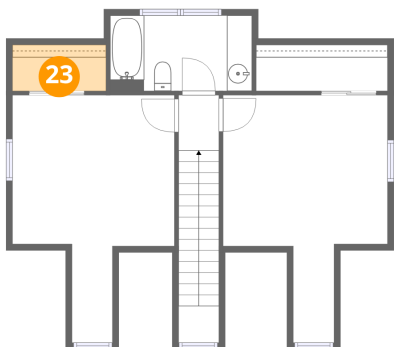
22 Floor 3 - Bedroom



Dimensions: 13'1" x 19'8"
Area: 258 sq. ft
Counted as living area: Yes

Heated: Yes
Finished: Yes
Enclosed: Yes
Contiguous: Yes
Permitted: Yes
Wet space: No
Addition: No
Conversion: No

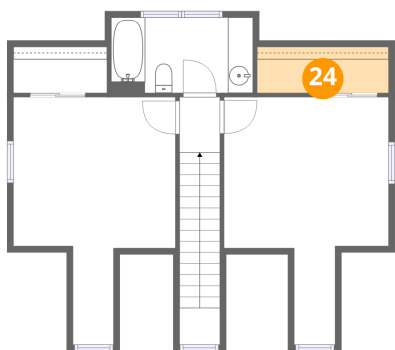
23 Floor 3 - W.I.C.



Dimensions: 7'5" x 3'8"
Area: 27 sq. ft
Counted as living area: Yes

Heated: Yes
Finished: Yes
Enclosed: Yes
Contiguous: Yes
Permitted: Yes
Wet space: No
Addition: No
Conversion: No

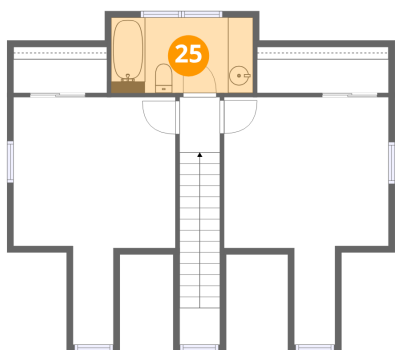
24 Floor 3 - W.I.C.



Dimensions: 10'5" x 3'8"
Area: 38 sq. ft
Counted as living area: Yes

Heated: Yes
Finished: Yes
Enclosed: Yes
Contiguous: Yes
Permitted: Yes
Wet space: No
Addition: No
Conversion: No

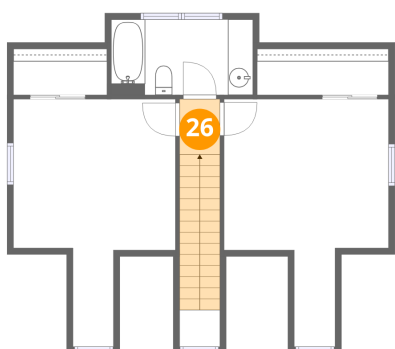
25 Floor 3 - Bath



Dimensions: 11'3" x 6'0"
Area: 68 sq. ft
Counted as living area: Yes

Heated: Yes
Finished: Yes
Enclosed: Yes
Contiguous: Yes
Permitted: Yes
Wet space: Yes
Addition: No
Conversion: No

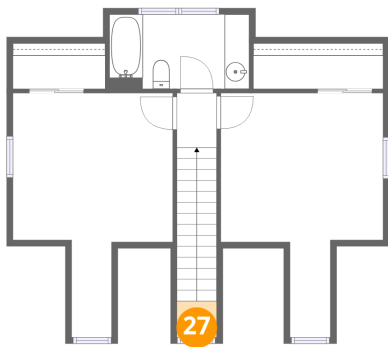
26 Floor 3 - Hall



Dimensions: 3'2" x 4'5"
Area: 14 sq. ft
Counted as living area: Yes

Heated: Yes
Finished: Yes
Enclosed: Yes
Contiguous: Yes
Permitted: Yes
Wet space: No
Addition: No
Conversion: No

27 Floor 3 - Open To Below



Dimensions: 3'2" x 2'11"
Area: 9 sq. ft
Counted as living area: No

Heated: No
Finished: No
Enclosed: No
Contiguous: Yes
Permitted: No
Wet space: No
Addition: No
Conversion: No