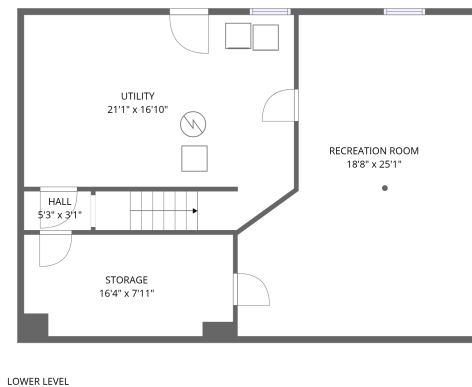
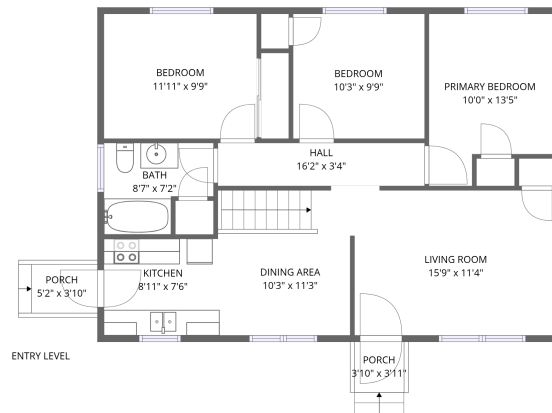


Home data report

**1313 Slemp Street, Park Place, Salem, Salem city, Virginia,
United States, 24153**



Total Area: 1312 sq. ft

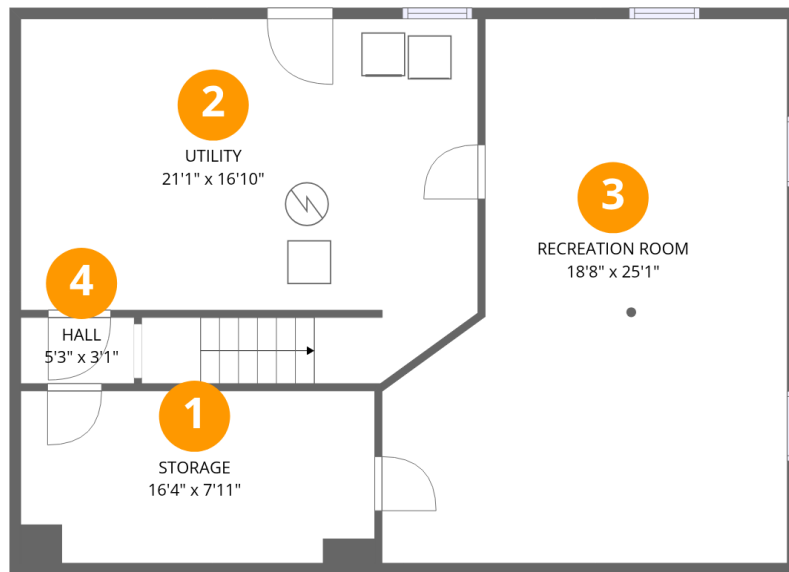
1st Floor: 425 sq. ft, 2nd Floor: 887 sq. ft

Excluded: Storage 133 sq. ft, Utility 328 sq. ft, Porch 38 sq. ft, Walls: 125 sq. ft

Property summary



1313 Slemp Street, Park Place, Salem, Salem city, Virginia,
United States, 24153



Room dimensions

Floor 1

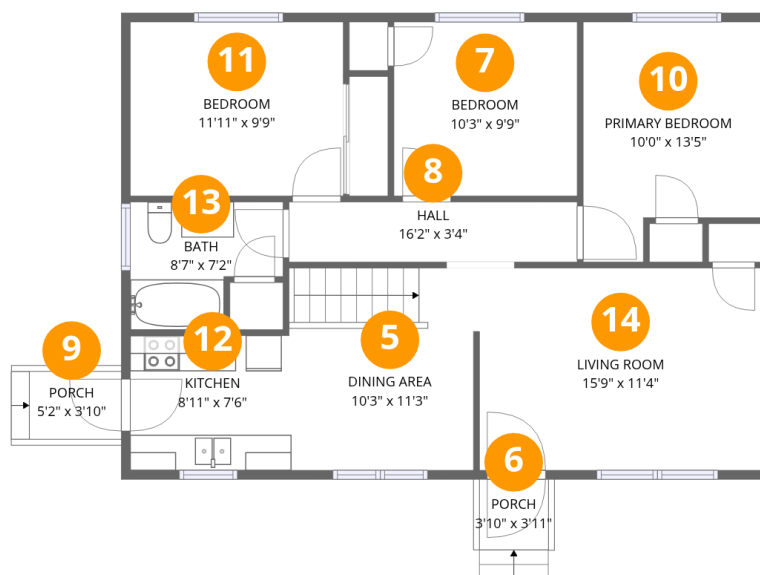
Total:425sqft

Excluded: 461sqft

#		Dimensions	sqft	Counted as living area
1	Storage	16'4" x 7'11"	129 sq. ft	No
2	Utility	21'1" x 16'10"	354 sq. ft	No
3	Recreation Room	18'8" x 25'1"	468 sq. ft	Yes
4	Hall	5'3" x 3'1"	16 sq. ft	Yes

Home data report

1313 Slemp Street, Park Place, Salem, Salem city, Virginia,
United States, 24153



Room dimensions

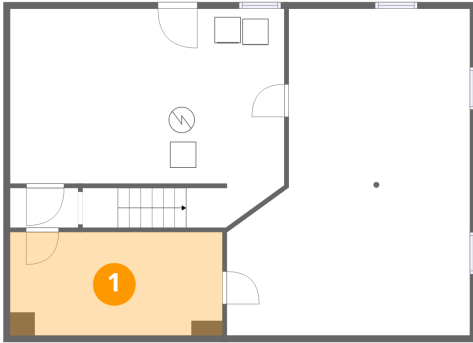
Floor 2

Total:887sqft Excluded: 38sqft

#		Dimensions	sqft	Counted as living area
5	Dining Area	10'3" x 11'3"	116 sq. ft	Yes
6	Porch	3'10" x 3'11"	15 sq. ft	No
7	Bedroom	10'3" x 9'9"	100 sq. ft	Yes
8	Hall	16'2" x 3'4"	54 sq. ft	Yes
9	Porch	5'2" x 3'10"	20 sq. ft	No
10	Primary Bedroom	10'0" x 13'5"	134 sq. ft	Yes
11	Bedroom	11'11" x 9'9"	116 sq. ft	Yes
12	Kitchen	8'11" x 7'6"	67 sq. ft	Yes
13	Bath	8'7" x 7'2"	61 sq. ft	Yes
14	Living Room	15'9" x 11'4"	179 sq. ft	Yes

1313 Slemp Street, Park Place, Salem, Salem city, Virginia,
United States, 24153

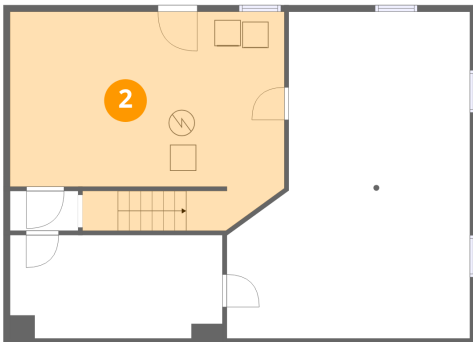
1 Floor 1 - Storage



Dimensions: 16'4" x 7'11"
Area: 129 sq. ft
Counted as living area: No

Heated: No
Finished: No
Enclosed: No
Contiguous: No
Permitted: Yes
Wet space: No
Addition: No
Conversion: No

2 Floor 1 - Utility

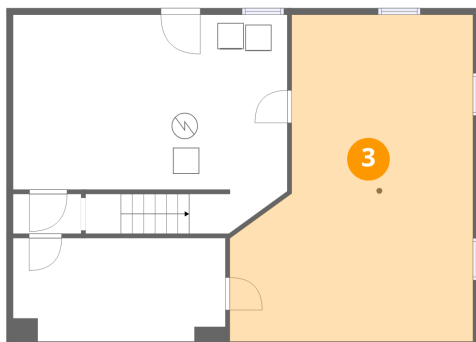


Dimensions: 21'1" x 16'10"
Area: 354 sq. ft
Counted as living area: No

Heated: Yes
Finished: No
Enclosed: Yes
Contiguous: Yes
Permitted: Yes
Wet space: No
Addition: No
Conversion: No

1313 Slemp Street, Park Place, Salem, Salem city, Virginia,
United States, 24153

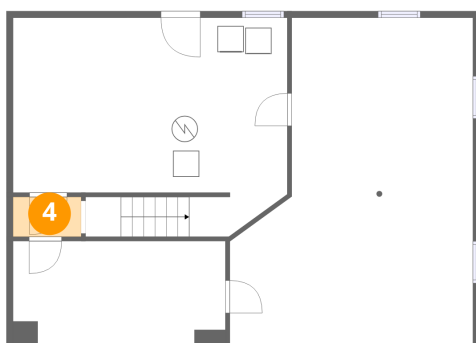
3 Floor 1 - Recreation Room



Dimensions: 18'8" x 25'1"
Area: 468 sq. ft
Counted as living area: Yes

Heated: Yes
Finished: Yes
Enclosed: Yes
Contiguous: Yes
Permitted: Yes
Wet space: No
Addition: No
Conversion: No

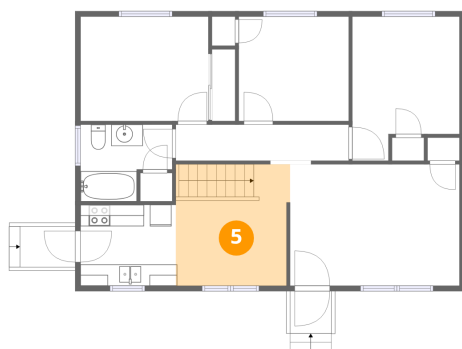
4 Floor 1 - Hall



Dimensions: 5'3" x 3'1"
Area: 16 sq. ft
Counted as living area: Yes

Heated: Yes
Finished: Yes
Enclosed: Yes
Contiguous: Yes
Permitted: Yes
Wet space: No
Addition: No
Conversion: No

5 Floor 2 - Dining Area



Dimensions: 10'3" x 11'3"
Area: 116 sq. ft
Counted as living area: Yes

Heated: Yes
Finished: Yes
Enclosed: Yes
Contiguous: Yes
Permitted: Yes
Wet space: No
Addition: No
Conversion: No

1313 Slemp Street, Park Place, Salem, Salem city, Virginia,
United States, 24153

6 Floor 2 - Porch



Dimensions: 3'10" x 3'11"
Area: 15 sq. ft
Counted as living area: No

Heated: No
Finished: No
Enclosed: No
Contiguous: Yes
Permitted: Yes
Wet space: No
Addition: No
Conversion: No

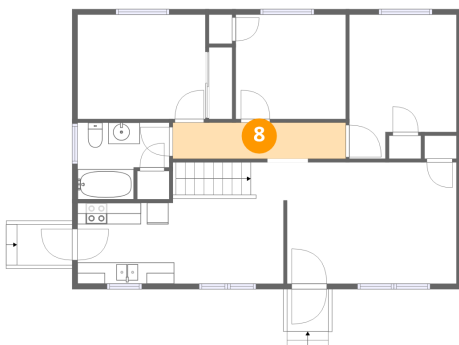
7 Floor 2 - Bedroom



Dimensions: 10'3" x 9'9"
Area: 100 sq. ft
Counted as living area: Yes

Heated: Yes
Finished: Yes
Enclosed: Yes
Contiguous: Yes
Permitted: Yes
Wet space: No
Addition: No
Conversion: No

8 Floor 2 - Hall

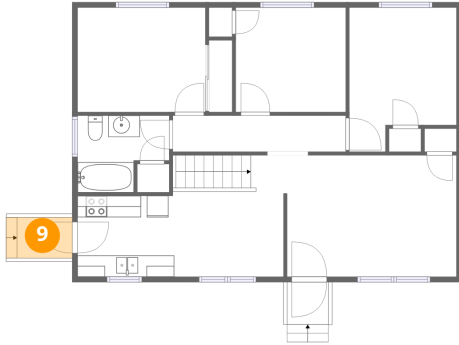


Dimensions: 16'2" x 3'4"
Area: 54 sq. ft
Counted as living area: Yes

Heated: Yes
Finished: Yes
Enclosed: Yes
Contiguous: Yes
Permitted: Yes
Wet space: No
Addition: No
Conversion: No

1313 Slemp Street, Park Place, Salem, Salem city, Virginia,
United States, 24153

9 Floor 2 - Porch



Dimensions: 5'2" x 3'10"
Area: 20 sq. ft
Counted as living area: No

Heated: No
Finished: No
Enclosed: No
Contiguous: Yes
Permitted: Yes
Wet space: No
Addition: No
Conversion: No

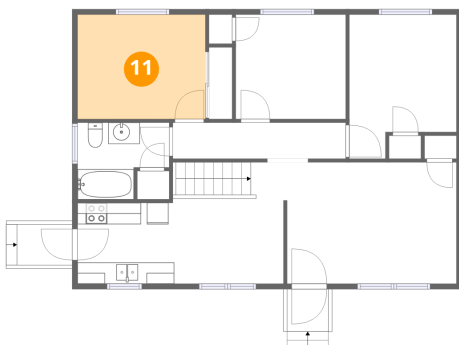
10 Floor 2 - Primary Bedroom



Dimensions: 10'0" x 13'5"
Area: 134 sq. ft
Counted as living area: Yes

Heated: Yes
Finished: Yes
Enclosed: Yes
Contiguous: Yes
Permitted: Yes
Wet space: No
Addition: No
Conversion: No

11 Floor 2 - Bedroom

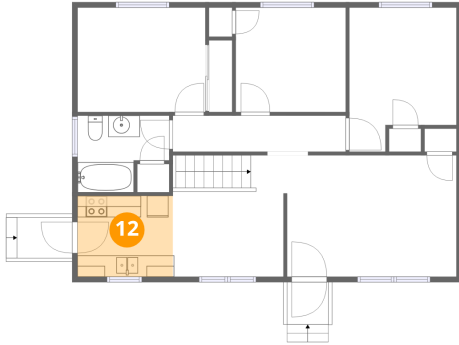


Dimensions: 11'11" x 9'9"
Area: 116 sq. ft
Counted as living area: Yes

Heated: Yes
Finished: Yes
Enclosed: Yes
Contiguous: Yes
Permitted: Yes
Wet space: No
Addition: No
Conversion: No

1313 Slemp Street, Park Place, Salem, Salem city, Virginia,
United States, 24153

12 Floor 2 - Kitchen



Dimensions: 8'11" x 7'6"
Area: 67 sq. ft
Counted as living area: Yes

Heated: Yes
Finished: Yes
Enclosed: Yes
Contiguous: Yes
Permitted: Yes
Wet space: No
Addition: No
Conversion: No

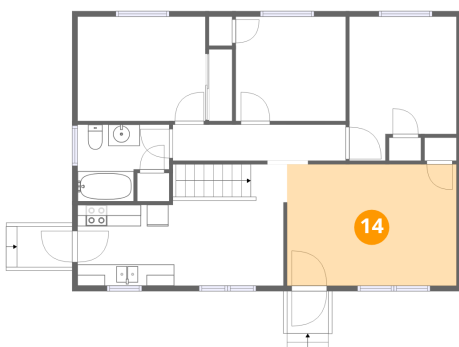
13 Floor 2 - Bath



Dimensions: 8'7" x 7'2"
Area: 61 sq. ft
Counted as living area: Yes

Heated: Yes
Finished: Yes
Enclosed: Yes
Contiguous: Yes
Permitted: Yes
Wet space: Yes
Addition: No
Conversion: No

14 Floor 2 - Living Room



Dimensions: 15'9" x 11'4"
Area: 179 sq. ft
Counted as living area: Yes

Heated: Yes
Finished: Yes
Enclosed: Yes
Contiguous: Yes
Permitted: Yes
Wet space: No
Addition: No
Conversion: No