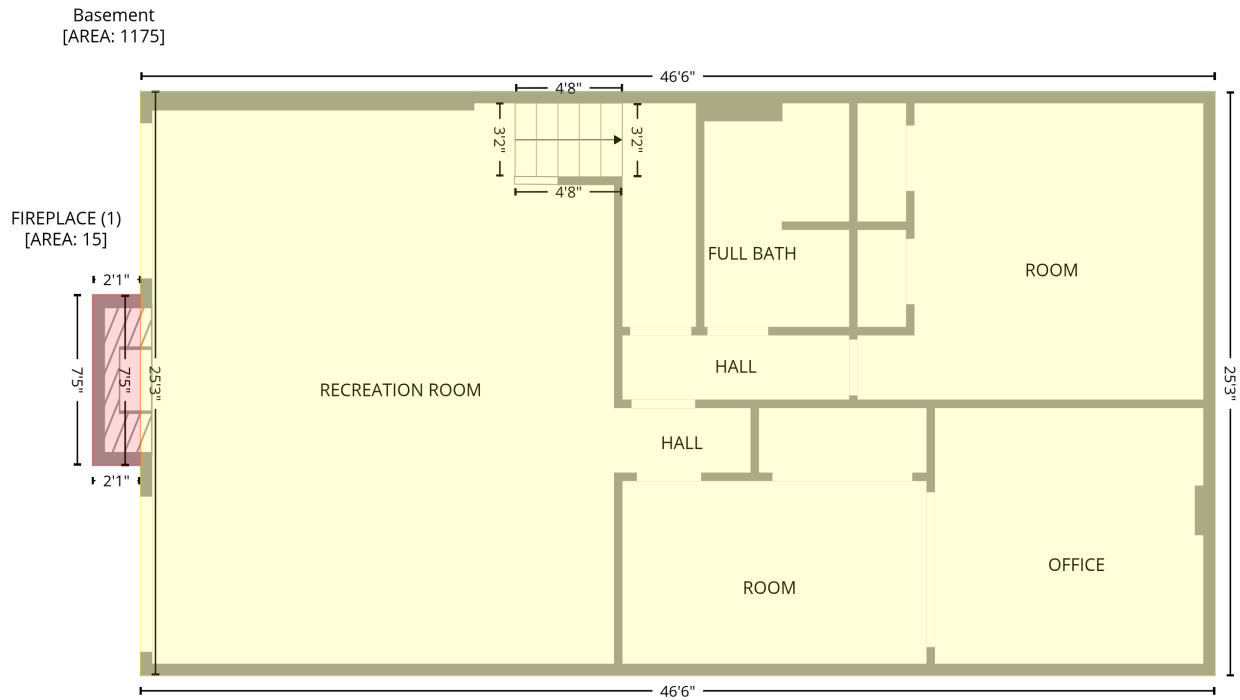


39 Anchor Drive, Bracey, Mecklenburg County, Virginia, United States, 23919

Gross Living Area: 1627 sq. ft

Level 1 - Below Grade

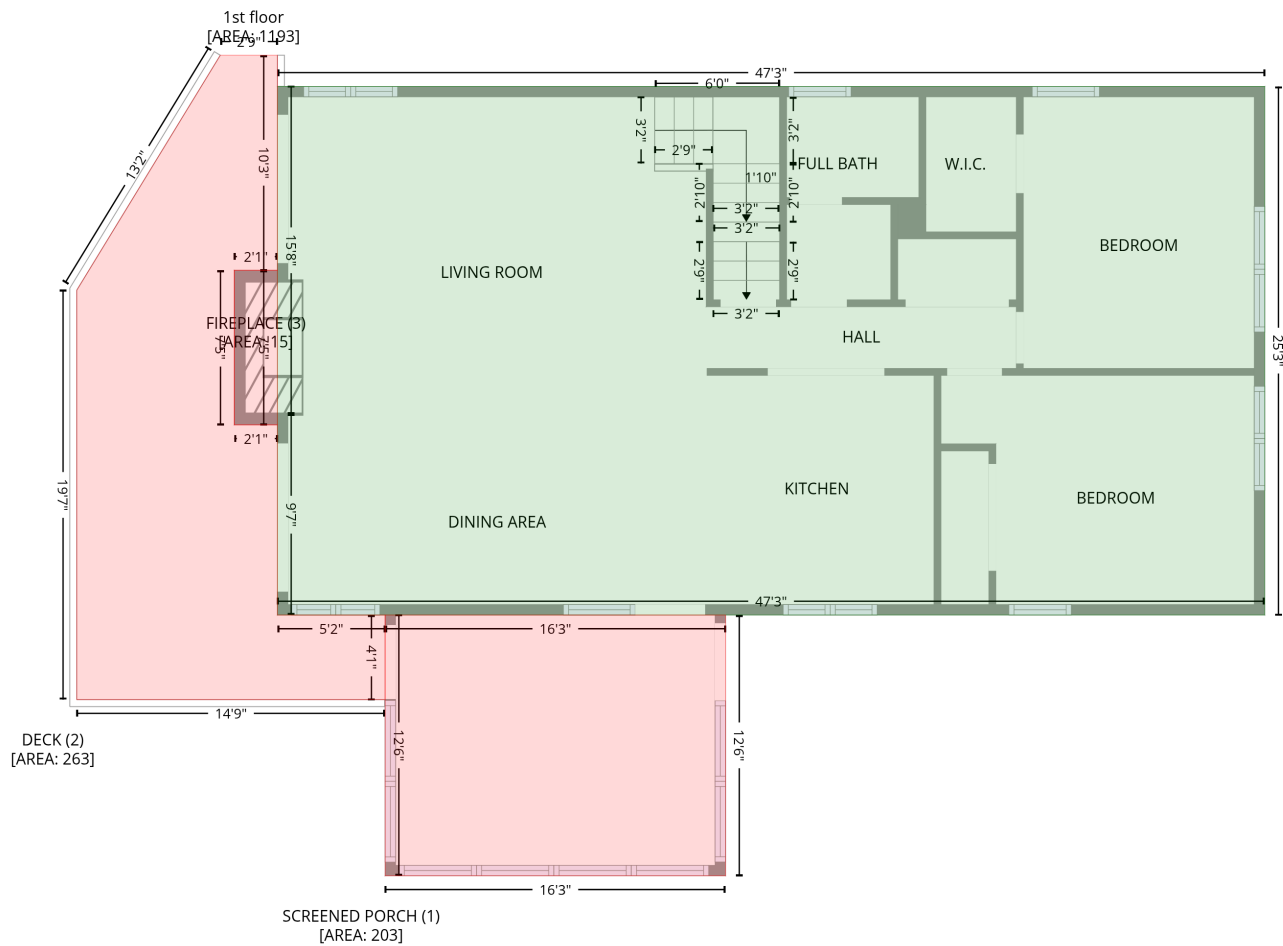


Space	Area (sq. ft)	Calculation <small>Coordinate Polygon Area Algorithm using inches</small>
Basement (Living area)	1175	$-\left((567.1 + 567.1) * (196.3 - 499.6) + (567.1 + 9.1) * (499.6 - 499.6) + (9.1 + 9.1) * (499.6 - 196.3) + (9.1 + 567.1) * (196.3 - 196.3)\right) * 0.5 * 0.00694$
FIREPLACE (Non-living area)	15	$-\left((9.1 + 9.1) * (301.8 - 390.5) + (9.1 + -15.7) * (390.5 - 390.5) + (-15.7 + -15.7) * (390.5 - 301.8) + (-15.7 + 9.1) * (301.8 - 301.8)\right) * 0.5 * 0.00694$

39 Anchor Drive, Bracey, Mecklenburg County, Virginia, United States, 23919

Gross Living Area: 1627 sq. ft

Level 2

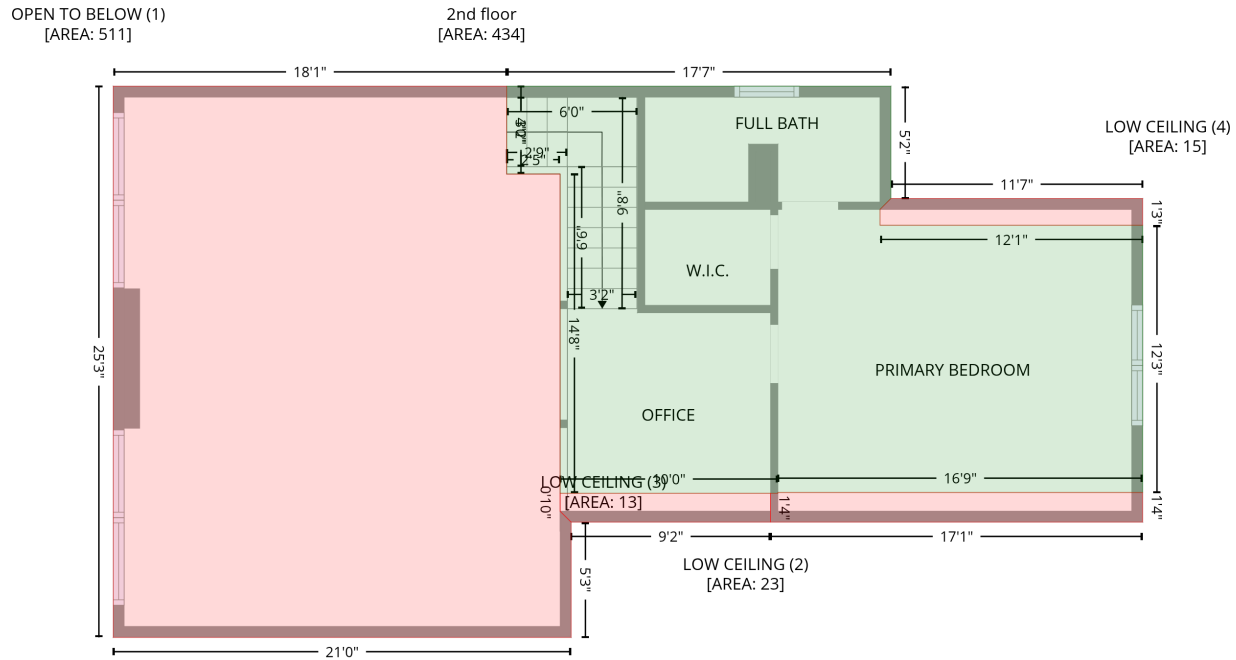


Space	Area (sq. ft)	Calculation <small>Coordinate Polygon Area Algorithm using inches</small>
1st floor (Living area)	1193	$-\left((575.7 + 575.7) * (196.3 - 499.6) + (575.7 + 9.1) * (499.6 - 499.6) + (9.1 + 9.1) * (499.6 - 384.5) + (9.1 + 9.1) * (384.5 - 384.4) + (9.1 + 9.1) * (384.4 - 196.3) + (9.1 + 575.7) * (196.3 - 196.3)\right) * 0.5 + 0.00694$
SCREENED PORCH (Non-living area)	203	$-\left((266.3 + 266.3) * (499.6 - 649.2) + (266.3 + 70.9) * (649.2 - 649.2) + (70.9 + 70.9) * (649.2 - 499.6) + (70.9 + 266.3) * (499.6 - 499.6)\right) * 0.5 + 0.00694$
DECK (Non-living area)	263	$-\left((9.1 + 9.1) * (178.5 - 301.8) + (9.1 + -15.7) * (301.8 - 301.8) + (-15.7 + -15.7) * (301.8 - 390.5) + (-15.7 + 9.1) * (390.5 - 390.5) + (9.1 + 9.1) * (390.5 - 499.6) + (9.1 + 70.9) * (499.6 - 499.6) + (70.9 + 70.9) * (499.6 - 548.1) + (70.9 + -106.1) * (548.1 - 548.1) + (-106.1 + -106.1) * (548.1 - 313.2) + (-106.1 + -23.7) * (313.2 - 178.5) + (-23.7 + 9.1) * (178.5 - 178.5)\right) * 0.5 + 0.00694$
FIREPLACE (Non-living area)	15	$-\left((9.1 + 9.1) * (301.8 - 390.5) + (9.1 + -15.7) * (390.5 - 390.5) + (-15.7 + -15.7) * (390.5 - 301.8) + (-15.7 + 9.1) * (301.8 - 301.8)\right) * 0.5 + 0.00694$

39 Anchor Drive, Bracey, Mecklenburg County, Virginia, United States, 23919

Gross Living Area: 1627 sq. ft

Level 3



Space	Area (sq. ft)	Calculation
2nd floor (Living area)	434	Coordinate Polygon Area Algorithm using inches $-\left((437.2 + 437.2) * (196.3 - 258.1) + (437.2 + 431.2) * (258.1 - 264.1) + (431.2 + 431.2) * (264.1 - 272.8) + (431.2 + 575.7) * (272.8 - 272.8) + (575.7 + 575.7) * (272.8 - 419.9) + (575.7 + 375) * (419.9 - 419.9) + (375 + 375) * (419.9 - 420.3) + (375 + 255.1) * (420.3 - 420.3) + (255.1 + 255.1) * (420.3 - 244.6) + (255.1 + 225.7) * (244.6 - 244.6) + (225.7 + 225.7) * (244.6 - 196.3) + (225.7 + 437.2) * (196.3 - 196.3)\right) * 0.5 * 0.00694$
OPEN TO BELOW (Non-living area)	511	Coordinate Polygon Area Algorithm using inches $-\left((225.7 + 225.7) * (196.3 - 244.6) + (225.7 + 255.1) * (244.6 - 244.6) + (255.1 + 255.1) * (244.6 - 420.3) + (255.1 + 255.1) * (420.3 - 420.3) + (255.1 + 255.1) * (420.3 - 430.3) + (255.1 + 261.2) * (430.3 - 436.2) + (261.2 + 261.2) * (436.2 - 499.6) + (261.2 + 9.1) * (499.6 - 499.6) + (9.1 + 9.1) * (499.6 - 196.3) + (9.1 + 225.7) * (196.3 - 196.3)\right) * 0.5 * 0.00694$
LOW CEILING (Non-living area)	23	Coordinate Polygon Area Algorithm using inches $-\left((575.7 + 575.7) * (419.9 - 436.2) + (575.7 + 371) * (436.2 - 436.2) + (371 + 371) * (436.2 - 420.3) + (371 + 375) * (420.3 - 420.3) + (375 + 375) * (420.3 - 419.9) + (375 + 575.7) * (419.9 - 419.9)\right) * 0.5 * 0.00694$
LOW CEILING (Non-living area)	13	Coordinate Polygon Area Algorithm using inches $-\left((371 + 371) * (420.3 - 436.2) + (371 + 261.2) * (436.2 - 436.2) + (261.2 + 255.2) * (436.2 - 430.2) + (255.2 + 255.1) * (430.2 - 420.3) + (255.1 + 371) * (420.3 - 420.3)\right) * 0.5 * 0.00694$
LOW CEILING (Non-living area)	15	Coordinate Polygon Area Algorithm using inches $-\left((575.7 + 575.7) * (258.1 - 272.8) + (575.7 + 431.2) * (272.8 - 272.8) + (431.2 + 431.2) * (272.8 - 264.1) + (431.2 + 437.2) * (264.1 - 258.1) + (437.2 + 575.7) * (258.1 - 258.1)\right) * 0.5 * 0.00694$