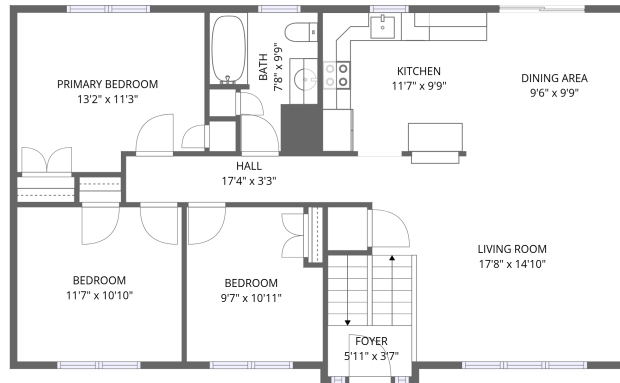
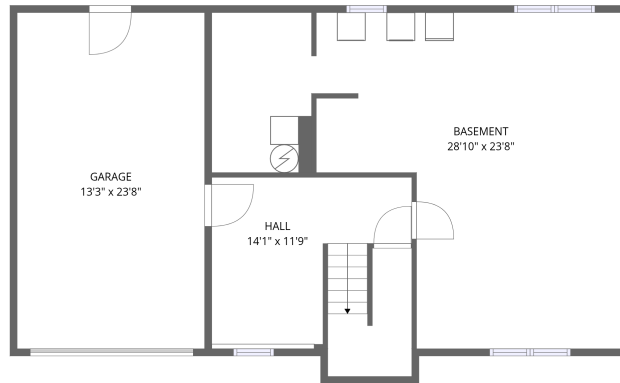


Home data report

1079 Langley Street, Fall River, Bristol County, Massachusetts,
United States, 02720



1st floor



Basement

Total Area: 1247 sq. ft

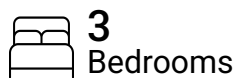
Basement: 191 sq. ft, 1st Floor: 1056 sq. ft

Excluded: Basement 506 sq. ft, Garage 313 sq. ft, Walls: 149 sq. ft

Property summary



2
Floors



3
Bedrooms



1
Bathrooms



1
Garages

Home data report

1079 Langley Street, Fall River, Bristol County, Massachusetts,
United States, 02720



Room dimensions

Floor 1 Below grade

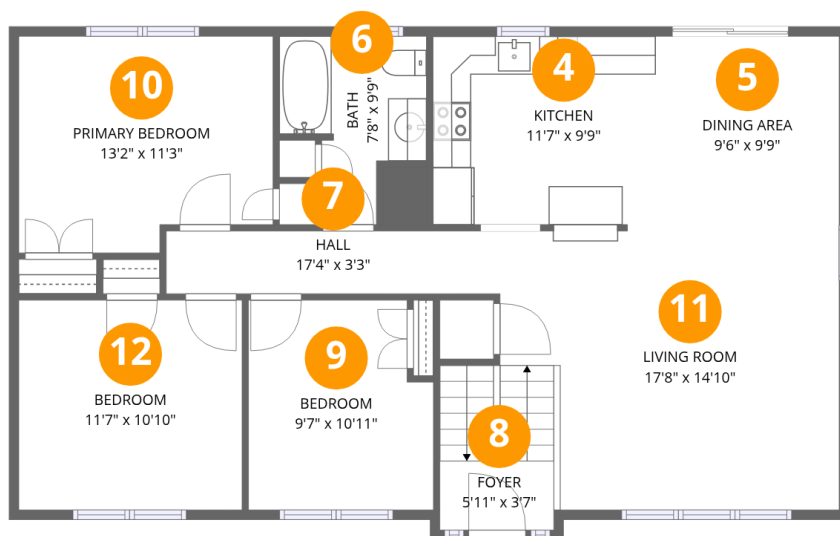
Total:191sqft

Excluded: 819sqft

#		Dimensions	sqft	Counted as living area
1	Hall	14'1" x 11'9"	165 sq. ft	Yes
2	Garage	13'3" x 23'8"	313 sq. ft	No
3	Basement	28'10" x 23'8"	683 sq. ft	No

Home data report

1079 Langley Street, Fall River, Bristol County, Massachusetts, United States, 02720



Room dimensions

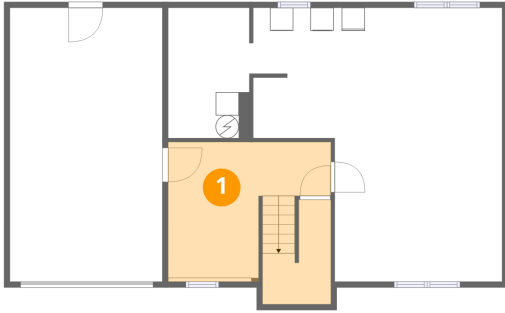
Floor 2

Total:1056sqft Excluded: 0sqft

#		Dimensions	sqft	Counted as living area
4	Kitchen	11'7" x 9'9"	113 sq. ft	Yes
5	Dining Area	9'6" x 9'9"	93 sq. ft	Yes
6	Bath	7'8" x 9'9"	75 sq. ft	Yes
7	Hall	17'4" x 3'3"	57 sq. ft	Yes
8	Foyer	5'11" x 3'7"	21 sq. ft	Yes
9	Bedroom	9'7" x 10'11"	104 sq. ft	Yes
10	Primary Bedroom	13'2" x 11'3"	148 sq. ft	Yes
11	Living Room	17'8" x 14'10"	261 sq. ft	Yes
12	Bedroom	11'7" x 10'10"	125 sq. ft	Yes

1079 Langley Street, Fall River, Bristol County, Massachusetts,
United States, 02720

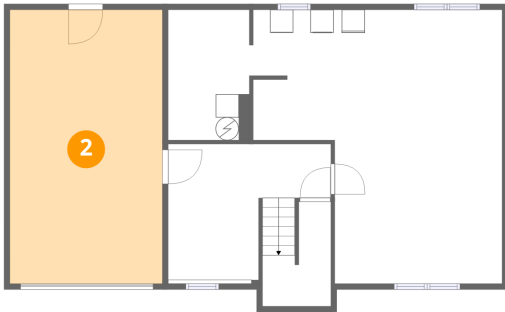
1 Floor 1 - Hall



Dimensions: 14'1" x 11'9"
Area: 165 sq. ft
Counted as living area: Yes

Heated: Yes
Finished: Yes
Enclosed: Yes
Contiguous: Yes
Permitted: Yes
Wet space: No
Addition: No
Conversion: No

2 Floor 1 - Garage



Dimensions: 13'3" x 23'8"
Area: 313 sq. ft
Counted as living area: No

Heated: No
Finished: No
Enclosed: Yes
Contiguous: Yes
Permitted: Yes
Wet space: No
Addition: No
Conversion: No

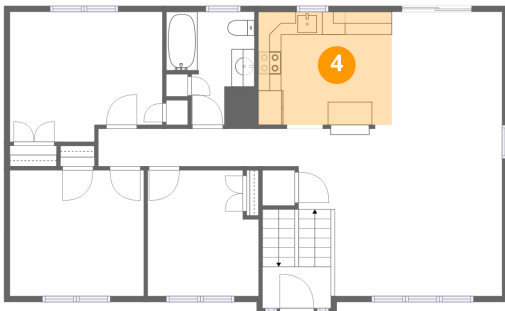
3 Floor 1 - Basement



Dimensions: 28'10" x 23'8"
Area: 683 sq. ft
Counted as living area: No

Heated: Yes
Finished: No
Enclosed: Yes
Contiguous: Yes
Permitted: Yes
Wet space: No
Addition: No
Conversion: No

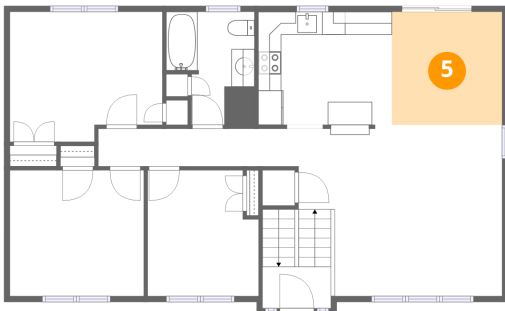
4 Floor 2 - Kitchen



Dimensions: 11'7" x 9'9"
Area: 113 sq. ft
Counted as living area: Yes

Heated: Yes
Finished: Yes
Enclosed: Yes
Contiguous: Yes
Permitted: Yes
Wet space: No
Addition: No
Conversion: No

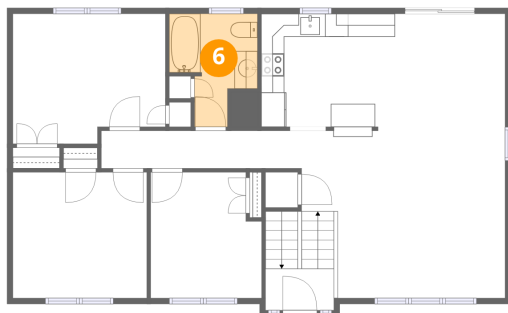
5 Floor 2 - Dining Area



Dimensions: 9'6" x 9'9"
Area: 93 sq. ft
Counted as living area: Yes

Heated: Yes
Finished: Yes
Enclosed: Yes
Contiguous: Yes
Permitted: Yes
Wet space: No
Addition: No
Conversion: No

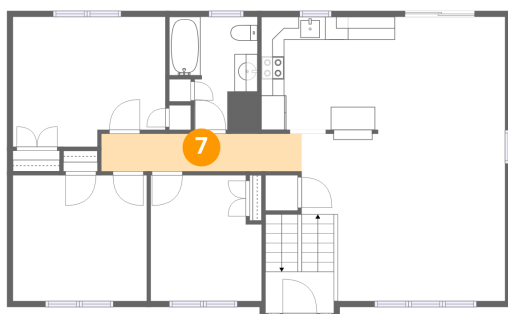
6 Floor 2 - Bath



Dimensions: 7'8" x 9'9"
Area: 75 sq. ft
Counted as living area: Yes

Heated: Yes
Finished: Yes
Enclosed: Yes
Contiguous: Yes
Permitted: Yes
Wet space: Yes
Addition: No
Conversion: No

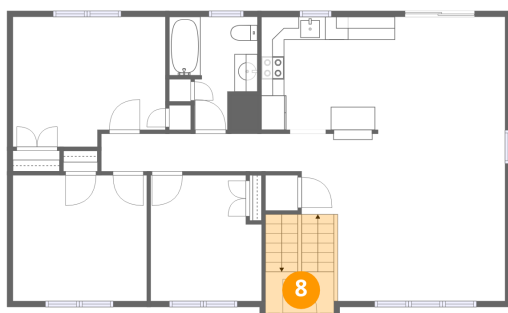
7 Floor 2 - Hall



Dimensions: 17'4" x 3'3"
Area: 57 sq. ft
Counted as living area: Yes

Heated: Yes
Finished: Yes
Enclosed: Yes
Contiguous: Yes
Permitted: Yes
Wet space: No
Addition: No
Conversion: No

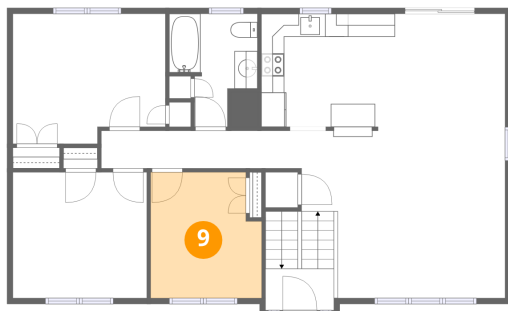
8 Floor 2 - Foyer



Dimensions: 5'11" x 3'7"
Area: 21 sq. ft
Counted as living area: Yes

Heated: Yes
Finished: Yes
Enclosed: Yes
Contiguous: Yes
Permitted: Yes
Wet space: No
Addition: No
Conversion: No

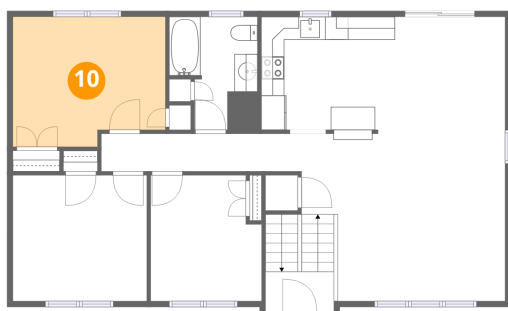
9 Floor 2 - Bedroom



Dimensions: 9'7" x 10'11"
Area: 104 sq. ft
Counted as living area: Yes

Heated: Yes
Finished: Yes
Enclosed: Yes
Contiguous: Yes
Permitted: Yes
Wet space: No
Addition: No
Conversion: No

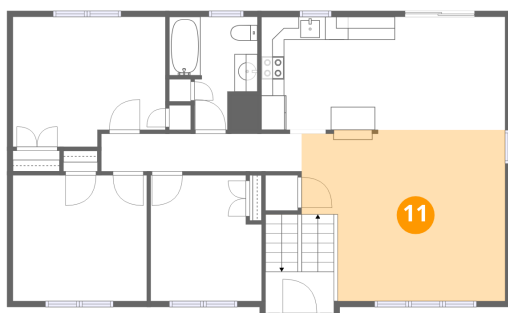
10 Floor 2 - Primary Bedroom



Dimensions: 13'2" x 11'3"
Area: 148 sq. ft
Counted as living area: Yes

Heated: Yes
Finished: Yes
Enclosed: Yes
Contiguous: Yes
Permitted: Yes
Wet space: No
Addition: No
Conversion: No

11 Floor 2 - Living Room



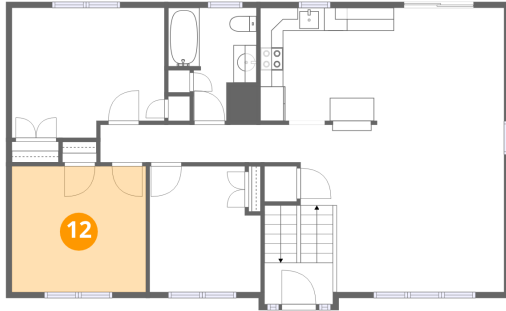
Dimensions: 17'8" x 14'10"
Area: 261 sq. ft
Counted as living area: Yes

Heated: Yes
Finished: Yes
Enclosed: Yes
Contiguous: Yes
Permitted: Yes
Wet space: No
Addition: No
Conversion: No

Home data report

1079 Langley Street, Fall River, Bristol County, Massachusetts,
United States, 02720

12 Floor 2 - Bedroom



Dimensions: 11'7" x 10'10"
Area: 125 sq. ft
Counted as living area: Yes

Heated: Yes
Finished: Yes
Enclosed: Yes
Contiguous: Yes
Permitted: Yes
Wet space: No
Addition: No
Conversion: No