

# Home data report

## 1062 Camelot Dr, Orcutt, CA, US



**Total Area: 2520 sq. ft**

1st Floor: 2520 sq. ft

Excluded: Garage 433 sq. ft, Fireplace 9 sq. ft, Walls: 187 sq. ft

## Property summary

 **1** Floors

 **3** Bedrooms

 **2** Bathrooms

Home data report

**1062 Camelot Dr,Orcutt,CA,US**

 **1**  
Half baths

 **1**  
Garages



## Room dimensions

Floor 1

Total:2520sqft Excluded: 442sqft

#		Dimensions	sqft	Counted as living area
1	Primary Bedroom	14'2" x 16'10"	238 sq. ft	Yes
2	W.I.C.	12'8" x 4'9"	60 sq. ft	Yes
3	Bath	13'0" x 6'0"	79 sq. ft	Yes
4	Office	13'10" x 12'0"	148 sq. ft	Yes
5	Bath	8'0" x 7'8"	60 sq. ft	Yes
6	Bath	7'5" x 6'0"	36 sq. ft	Yes
7	Bedroom	12'4" x 11'2"	137 sq. ft	Yes
8	Kitchen	18'1" x 11'8"	211 sq. ft	Yes
9	Bath	12'8" x 8'7"	85 sq. ft	Yes
10	Garage	20'4" x 21'3"	433 sq. ft	No
11	Family Room	18'8" x 17'3"	329 sq. ft	Yes

Home data report

**1062 Camelot Dr,Orcutt,CA,US**

#		Dimensions	sqft	Counted as living area
12	Bedroom	12'4" x 11'6"	141 sq. ft	Yes
13	Breakfast Nook	7'11" x 11'8"	93 sq. ft	Yes
14	Hall	16'6" x 14'8"	125 sq. ft	Yes
15	Dining Area	16'4" x 11'9"	192 sq. ft	Yes
16	Laundry	8'4" x 7'11"	59 sq. ft	Yes
17	Foyer	19'9" x 9'1"	127 sq. ft	Yes
18	Living Room	18'0" x 15'8"	275 sq. ft	Yes

## 1 Floor 1 - Primary Bedroom

---



Dimensions: 14'2" x 16'10"  
Area: 238 sq. ft  
Counted as living area: Yes

Heated: Yes  
Finished: Yes  
Enclosed: Yes  
Contiguous: Yes  
Permitted: Yes  
Wet space: No  
Addition: No  
Conversion: No

## 2 Floor 1 - W.I.C.

---



Dimensions: 12'8" x 4'9"  
Area: 60 sq. ft  
Counted as living area: Yes

Heated: Yes  
Finished: Yes  
Enclosed: Yes  
Contiguous: Yes  
Permitted: Yes  
Wet space: No  
Addition: No  
Conversion: No

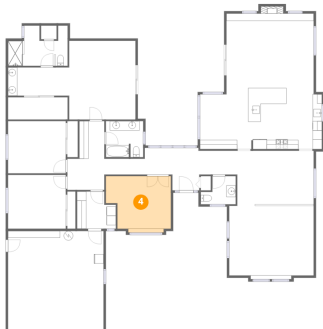
### 3 Floor 1 - Bath



Dimensions: 13'0" x 6'0"  
Area: 79 sq. ft  
Counted as living area: Yes

Heated: Yes  
Finished: Yes  
Enclosed: Yes  
Contiguous: Yes  
Permitted: Yes  
Wet space: Yes  
Addition: No  
Conversion: No

### 4 Floor 1 - Office



Dimensions: 13'10" x 12'0"  
Area: 148 sq. ft  
Counted as living area: Yes

Heated: Yes  
Finished: Yes  
Enclosed: Yes  
Contiguous: Yes  
Permitted: Yes  
Wet space: No  
Addition: No  
Conversion: No

### 5 Floor 1 - Bath



Dimensions: 8'0" x 7'8"  
Area: 60 sq. ft  
Counted as living area: Yes

Heated: Yes  
Finished: Yes  
Enclosed: Yes  
Contiguous: Yes  
Permitted: Yes  
Wet space: Yes  
Addition: No  
Conversion: No

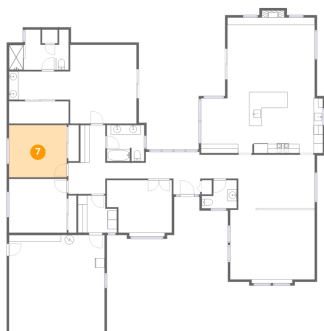
## 6 Floor 1 - Bath



Dimensions: 7'5" x 6'0"  
Area: 36 sq. ft  
Counted as living area: Yes

Heated: Yes  
Finished: Yes  
Enclosed: Yes  
Contiguous: Yes  
Permitted: Yes  
Wet space: Yes  
Addition: No  
Conversion: No

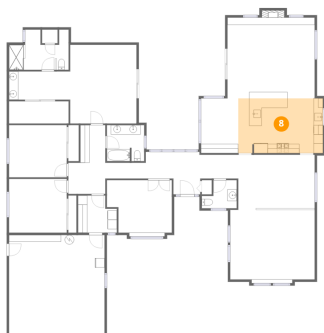
## 7 Floor 1 - Bedroom



Dimensions: 12'4" x 11'2"  
Area: 137 sq. ft  
Counted as living area: Yes

Heated: Yes  
Finished: Yes  
Enclosed: Yes  
Contiguous: Yes  
Permitted: Yes  
Wet space: No  
Addition: No  
Conversion: No

## 8 Floor 1 - Kitchen



Dimensions: 18'1" x 11'8"  
Area: 211 sq. ft  
Counted as living area: Yes

Heated: Yes  
Finished: Yes  
Enclosed: Yes  
Contiguous: Yes  
Permitted: Yes  
Wet space: No  
Addition: No  
Conversion: No

### 9 Floor 1 - Bath



Dimensions: 12'8" x 8'7"  
Area: 85 sq. ft  
Counted as living area: Yes

Heated: Yes  
Finished: Yes  
Enclosed: Yes  
Contiguous: Yes  
Permitted: Yes  
Wet space: Yes  
Addition: No  
Conversion: No

### 10 Floor 1 - Garage



Dimensions: 20'4" x 21'3"  
Area: 433 sq. ft  
Counted as living area: No

Heated: No  
Finished: No  
Enclosed: Yes  
Contiguous: Yes  
Permitted: Yes  
Wet space: No  
Addition: No  
Conversion: No

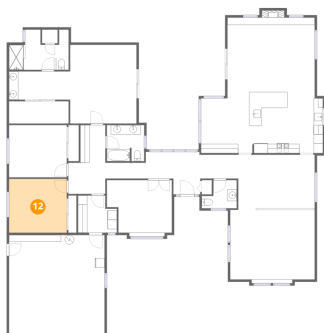
### 11 Floor 1 - Family Room



Dimensions: 18'8" x 17'3"  
Area: 329 sq. ft  
Counted as living area: Yes

Heated: Yes  
Finished: Yes  
Enclosed: Yes  
Contiguous: Yes  
Permitted: Yes  
Wet space: No  
Addition: No  
Conversion: No

## 12 Floor 1 - Bedroom



Dimensions: 12'4" x 11'6"  
Area: 141 sq. ft  
Counted as living area: Yes

Heated: Yes  
Finished: Yes  
Enclosed: Yes  
Contiguous: Yes  
Permitted: Yes  
Wet space: No  
Addition: No  
Conversion: No

## 13 Floor 1 - Breakfast Nook



Dimensions: 7'11" x 11'8"  
Area: 93 sq. ft  
Counted as living area: Yes

Heated: Yes  
Finished: Yes  
Enclosed: Yes  
Contiguous: Yes  
Permitted: Yes  
Wet space: No  
Addition: No  
Conversion: No

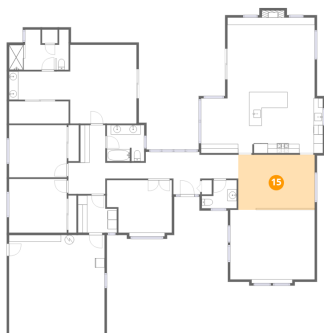
## 14 Floor 1 - Hall



Dimensions: 16'6" x 14'8"  
Area: 125 sq. ft  
Counted as living area: Yes

Heated: Yes  
Finished: Yes  
Enclosed: Yes  
Contiguous: Yes  
Permitted: Yes  
Wet space: No  
Addition: No  
Conversion: No

### 15 Floor 1 - Dining Area



Dimensions: 16'4" x 11'9"  
Area: 192 sq. ft  
Counted as living area: Yes

Heated: Yes  
Finished: Yes  
Enclosed: Yes  
Contiguous: Yes  
Permitted: Yes  
Wet space: No  
Addition: No  
Conversion: No

### 16 Floor 1 - Laundry



Dimensions: 8'4" x 7'11"  
Area: 59 sq. ft  
Counted as living area: Yes

Heated: Yes  
Finished: Yes  
Enclosed: Yes  
Contiguous: Yes  
Permitted: Yes  
Wet space: No  
Addition: No  
Conversion: No

### 17 Floor 1 - Foyer



Dimensions: 19'9" x 9'1"  
Area: 127 sq. ft  
Counted as living area: Yes

Heated: Yes  
Finished: Yes  
Enclosed: Yes  
Contiguous: Yes  
Permitted: Yes  
Wet space: No  
Addition: No  
Conversion: No

**18** Floor 1 - Living Room

---



**Dimensions:** 18'0" x 15'8"  
**Area:** 275 sq. ft  
**Counted as living area:** Yes

**Heated:** Yes  
**Finished:** Yes  
**Enclosed:** Yes  
**Contiguous:** Yes  
**Permitted:** Yes  
**Wet space:** No  
**Addition:** No  
**Conversion:** No