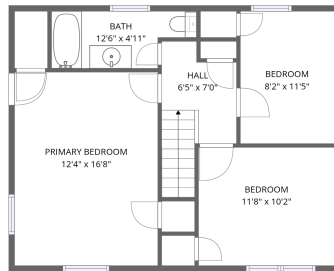
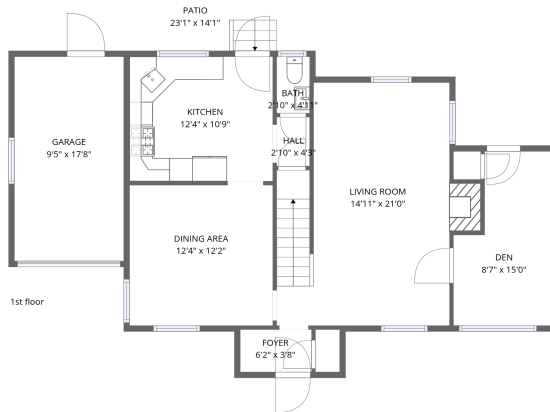


Home data report

171 Park Boulevard, Malverne, Nassau County, New York, United States, 11565



2nd floor



1st floor

Total Area: 1388 sq. ft

1st Floor: 782 sq. ft, 2nd Floor: 606 sq. ft

Excluded: Garage 167 sq. ft, Patio 210 sq. ft, Walls: 134 sq. ft

Property summary



Home data report

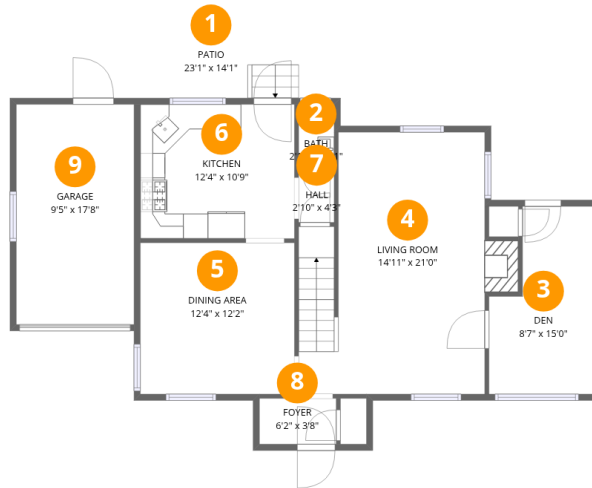
171 Park Boulevard, Malverne, Nassau County, New York, United States, 11565

 **1**
Half baths

 **1**
Garages

Home data report

171 Park Boulevard, Malverne, Nassau County, New York, United States, 11565



Room dimensions

Floor 1

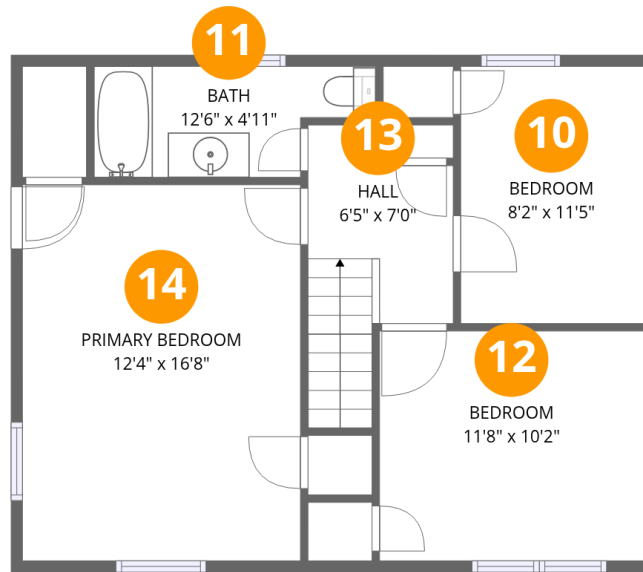
Total:782sqft

Excluded: 377sqft

#		Dimensions	sqft	Counted as living area
1	Patio	23'1" x 14'1"	210 sq. ft	No
2	Bath	2'10" x 4'11"	14 sq. ft	Yes
3	Den	8'7" x 15'0"	109 sq. ft	Yes
4	Living Room	14'11" x 21'0"	298 sq. ft	Yes
5	Dining Area	12'4" x 12'2"	150 sq. ft	Yes
6	Kitchen	12'4" x 10'9"	133 sq. ft	Yes
7	Hall	2'10" x 4'3"	12 sq. ft	Yes
8	Foyer	6'2" x 3'8"	23 sq. ft	Yes
9	Garage	9'5" x 17'8"	167 sq. ft	No

Home data report

171 Park Boulevard, Malverne, Nassau County, New York, United States, 11565



Room dimensions

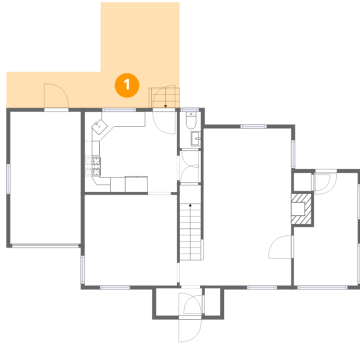
Floor 2

Total:606sqft

Excluded: 0sqft

#		Dimensions	sqft	Counted as living area
10	Bedroom	8'2" x 11'5"	93 sq. ft	Yes
11	Bath	12'6" x 4'11"	53 sq. ft	Yes
12	Bedroom	11'8" x 10'2"	120 sq. ft	Yes
13	Hall	6'5" x 7'0"	64 sq. ft	Yes
14	Primary Bedroom	12'4" x 16'8"	206 sq. ft	Yes

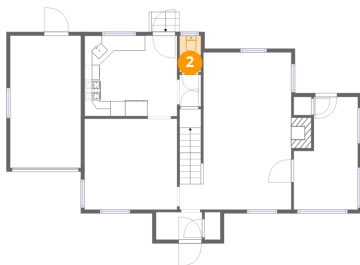
1 Floor 1 - Patio



Dimensions: 23'1" x 14'1"
Area: 210 sq. ft
Counted as living area: No

Heated: No
Finished: No
Enclosed: No
Contiguous: Yes
Permitted: Yes
Wet space: No
Addition: No
Conversion: No

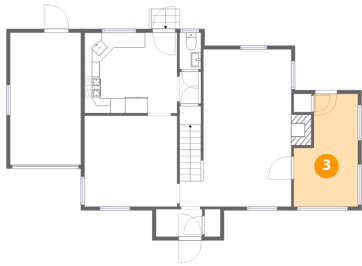
2 Floor 1 - Bath



Dimensions: 2'10" x 4'11"
Area: 14 sq. ft
Counted as living area: Yes

Heated: Yes
Finished: Yes
Enclosed: Yes
Contiguous: Yes
Permitted: Yes
Wet space: Yes
Addition: No
Conversion: No

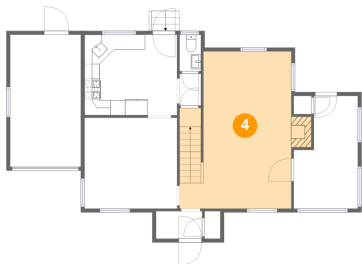
3 Floor 1 - Den



Dimensions: 8'7" x 15'0"
Area: 109 sq. ft
Counted as living area: Yes

Heated: Yes
Finished: Yes
Enclosed: Yes
Contiguous: Yes
Permitted: Yes
Wet space: No
Addition: No
Conversion: No

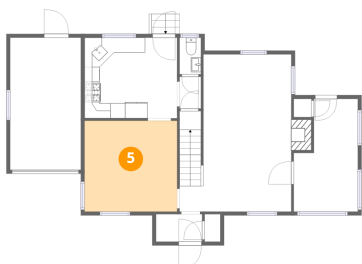
4 Floor 1 - Living Room



Dimensions: 14'11" x 21'0"
Area: 298 sq. ft
Counted as living area: Yes

Heated: Yes
Finished: Yes
Enclosed: Yes
Contiguous: Yes
Permitted: Yes
Wet space: No
Addition: No
Conversion: No

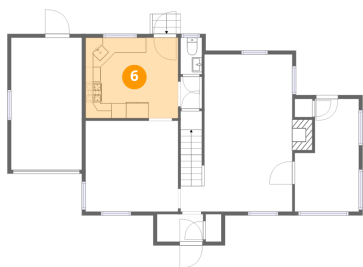
5 Floor 1 - Dining Area



Dimensions: 12'4" x 12'2"
Area: 150 sq. ft
Counted as living area: Yes

Heated: Yes
Finished: Yes
Enclosed: Yes
Contiguous: Yes
Permitted: Yes
Wet space: No
Addition: No
Conversion: No

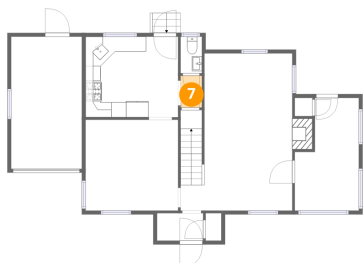
6 Floor 1 - Kitchen



Dimensions: 12'4" x 10'9"
Area: 133 sq. ft
Counted as living area: Yes

Heated: Yes
Finished: Yes
Enclosed: Yes
Contiguous: Yes
Permitted: Yes
Wet space: No
Addition: No
Conversion: No

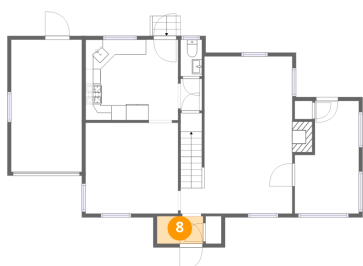
7 Floor 1 - Hall



Dimensions: 2'10" x 4'3"
Area: 12 sq. ft
Counted as living area: Yes

Heated: Yes
Finished: Yes
Enclosed: Yes
Contiguous: Yes
Permitted: Yes
Wet space: No
Addition: No
Conversion: No

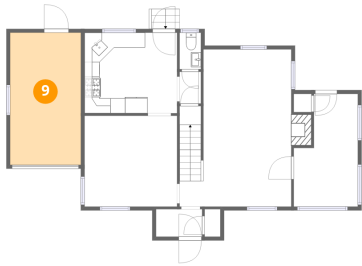
8 Floor 1 - Foyer



Dimensions: 6'2" x 3'8"
Area: 23 sq. ft
Counted as living area: Yes

Heated: Yes
Finished: Yes
Enclosed: Yes
Contiguous: Yes
Permitted: Yes
Wet space: No
Addition: No
Conversion: No

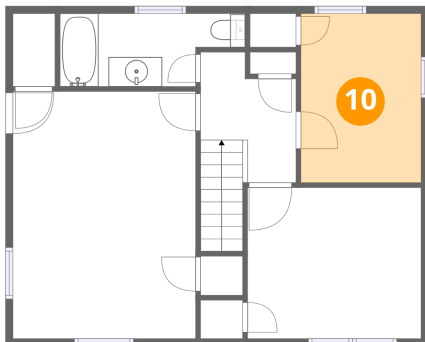
9 Floor 1 - Garage



Dimensions: 9'5" x 17'8"
Area: 167 sq. ft
Counted as living area: No

Heated: No
Finished: No
Enclosed: Yes
Contiguous: Yes
Permitted: Yes
Wet space: No
Addition: No
Conversion: No

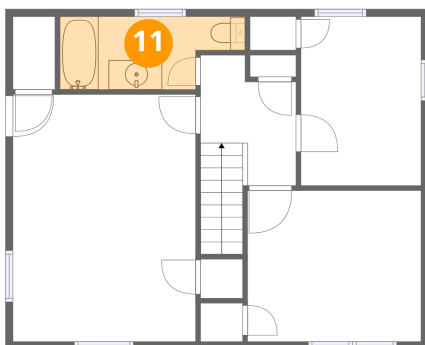
10 Floor 2 - Bedroom



Dimensions: 8'2" x 11'5"
Area: 93 sq. ft
Counted as living area: Yes

Heated: Yes
Finished: Yes
Enclosed: Yes
Contiguous: Yes
Permitted: Yes
Wet space: No
Addition: No
Conversion: No

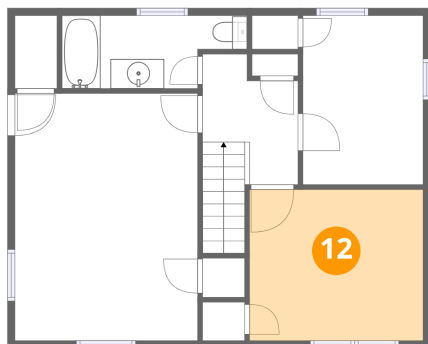
11 Floor 2 - Bath



Dimensions: 12'6" x 4'11"
Area: 53 sq. ft
Counted as living area: Yes

Heated: Yes
Finished: Yes
Enclosed: Yes
Contiguous: Yes
Permitted: Yes
Wet space: Yes
Addition: No
Conversion: No

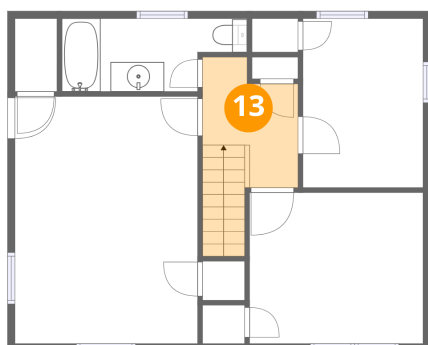
12 Floor 2 - Bedroom



Dimensions: 11'8" x 10'2"
Area: 120 sq. ft
Counted as living area: Yes

Heated: Yes
Finished: Yes
Enclosed: Yes
Contiguous: Yes
Permitted: Yes
Wet space: No
Addition: No
Conversion: No

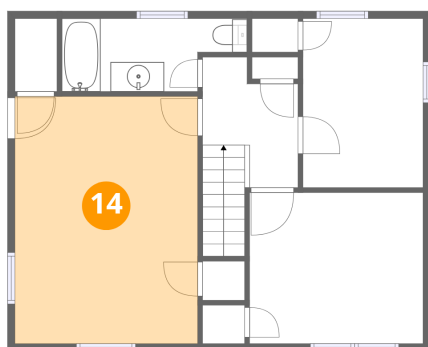
13 Floor 2 - Hall



Dimensions: 6'5" x 7'0"
Area: 64 sq. ft
Counted as living area: Yes

Heated: Yes
Finished: Yes
Enclosed: Yes
Contiguous: Yes
Permitted: Yes
Wet space: No
Addition: No
Conversion: No

14 Floor 2 - Primary Bedroom



Dimensions: 12'4" x 16'8"
Area: 206 sq. ft
Counted as living area: Yes

Heated: Yes
Finished: Yes
Enclosed: Yes
Contiguous: Yes
Permitted: Yes
Wet space: No
Addition: No
Conversion: No