

6719 Reedy Creek Road, Bradfield Farms, Charlotte, Mecklenburg County, North Carolina, United States, 28215

Total area: 2902 sq. ft
Gross living area: 2722 sq. ft

Finished area: 2722 sq. ft
Non-standard finished area: 0 sq. ft

Level 1



Total area: 1596 sq. ft
Gross living area: 1416 sq. ft

Finished area: 1416 sq. ft
Non-standard finished area: 0 sq. ft

Space	Area (sq. ft)	Calculation <small>Coordinate Polygon Area Algorithm using inches</small>
Finished Area	1416	$-\left((205.4 + 226.2) * (70.8 - 91.6) + (226.2 + 633) * (91.6 - 91.6) + (633 + 633) * (91.6 - 265.3) + (633 + 627) * (265.3 - 265.3) + (627 + 627) * (265.3 - 271.3) + (627 + 395.6) * (271.3 - 271.3) + (395.6 + 395.6) * (271.3 - 489.7) + (395.6 + 389.6) * (489.7 - 489.7) + (389.6 + 389.6) * (489.7 - 495.7) + (389.6 + -0.1) * (495.7 - 495.7) + (-0.1 + -0.1) * (495.7 - 91.6) + (-0.1 + 130.6) * (91.6 - 91.6) + (130.6 + 132.7) * (91.6 - 96.9) + (132.7 + 153.9) * (96.9 - 76.8) + (153.9 + 151.4) * (76.8 - 70.8) + (151.4 + 205.4) * (70.8 - 70.8)\right) * 0.5 * 0.00694$

6719 Reedy Creek Road, Bradfield Farms, Charlotte, Mecklenburg County, North Carolina, United States, 28215

Total area: 2902 sq. ft
Gross living area: 2722 sq. ft

Finished area: 2722 sq. ft
Non-standard finished area: 0 sq. ft

Level 1

Space	Area (sq. ft)	Calculation <small>Coordinate Polygon Area Algorithm using inches</small>
PORCH • Non-living area • Unfinished Area	180	$-((389.6 + 389.8) * (495.7 - 561.8) + (389.8 + 4) * (561.8 - 563.7) + (4 + 4) * (563.7 - 495.7) + (4 + 389.6) * (495.7 - 495.7)) * 0.5 * 0.00694$
GARAGE • Attached Garage	464	$-((627 + 627) * (271.3 - 559.7) + (627 + 395.6) * (559.7 - 559.7) + (395.6 + 395.6) * (559.7 - 271.3) + (395.6 + 627) * (271.3 - 271.3)) * 0.5 * 0.00694$

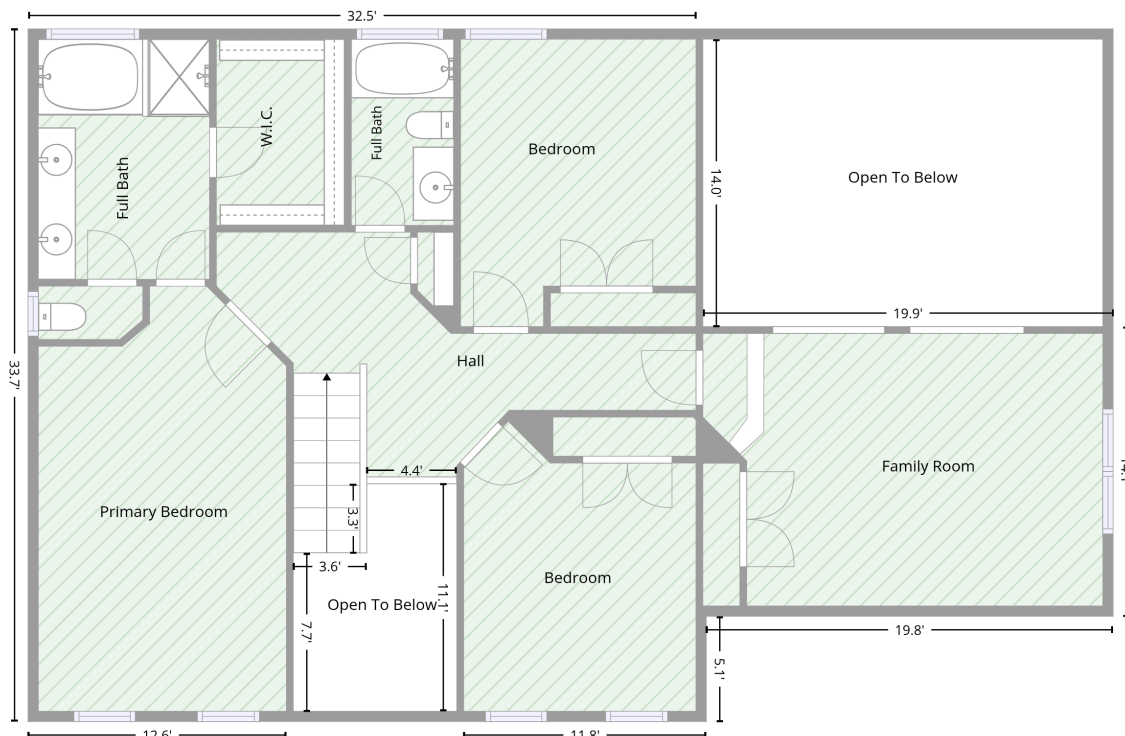
6719 Reedy Creek Road, Bradfield Farms, Charlotte, Mecklenburg County, North Carolina, United States, 28215

Total area: 2902 sq. ft
Gross living area: 2722 sq. ft

Finished area: 2722 sq. ft
Non-standard finished area: 0 sq. ft

Level 2

1306 sq. ft Finished Area
Above Grade



Total area: 1306 sq. ft
Gross living area: 1306 sq. ft

Finished area: 1306 sq. ft
Non-standard finished area: 0 sq. ft

Space	Area (sq. ft)	Calculation <small>Coordinate Polygon Area Algorithm using inches</small>
Finished Area	1306	$-\left((389.6 + 389.6) * (91.6 - 97.6) + (389.6 + 393.6) * (97.6 - 97.6) + (393.6 + 393.6) * (97.6 - 265.3) + (393.6 + 633) * (265.3 - 265.3) + (633 + 633) * (265.3 - 434.3) + (633 + 395.6) * (434.3 - 434.3) + (395.6 + 395.6) * (434.3 - 495.7) + (395.6 + 254.1) * (495.7 - 495.7) + (254.1 + 254.1) * (495.7 - 489.7) + (254.1 + 250.1) * (489.7 - 489.7) + (250.1 + 250.1) * (489.7 - 357) + (250.1 + 197.5) * (357 - 357) + (197.5 + 197.6) * (357 - 397.3) + (197.6 + 154.7) * (397.3 - 397.3) + (154.7 + 154.7) * (397.3 - 489.7) + (154.7 + 150.7) * (489.7 - 489.7) + (150.7 + 150.7) * (489.7 - 495.7) + (150.7 + -0.1) * (495.7 - 495.7) + (-0.1 + -0.1) * (495.7 - 91.6) + (-0.1 + 389.6) * (91.6 - 91.6)\right) * 0.5 * 0.00694$

6719 Reedy Creek Road, Bradfield Farms, Charlotte, Mecklenburg County, North Carolina, United States, 28215

Total area: 2902 sq. ft
Gross living area: 2722 sq. ft

Finished area: 2722 sq. ft
Non-standard finished area: 0 sq. ft

Property UPD

Data	Value
Structure	1
Unit	1
Level Number	1
Below Grade	false
Level Low Ceiling	false
ADU Indicator	false
Total Area	1596
Finished Area	1416
Non-Standard Finished Area	0
Structure	1
Unit	1
Level Number	2
Below Grade	false
Level Low Ceiling	false
ADU Indicator	false
Total Area	1306
Finished Area	1306
Non-Standard Finished Area	0