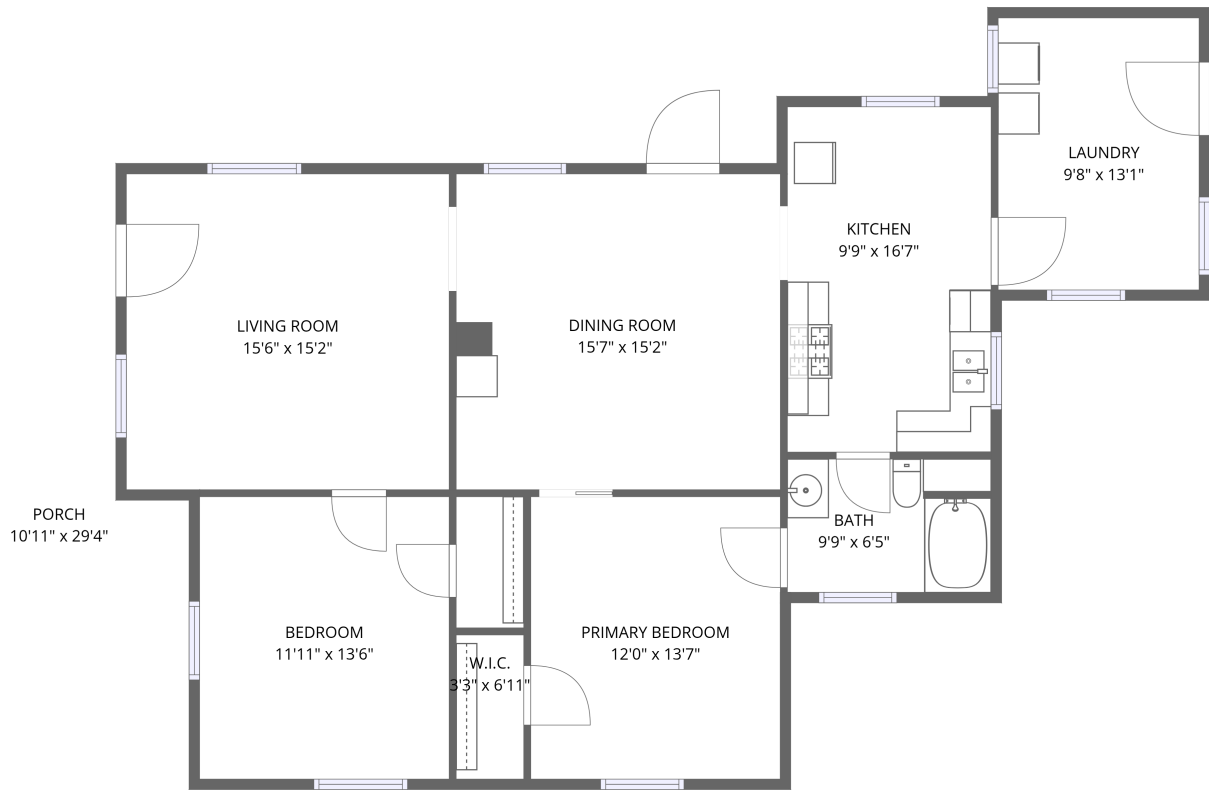


Home data report

# 243 W Locust St, Shelbyville, IN, US



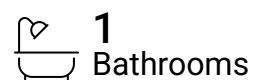
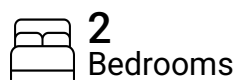
1st floor

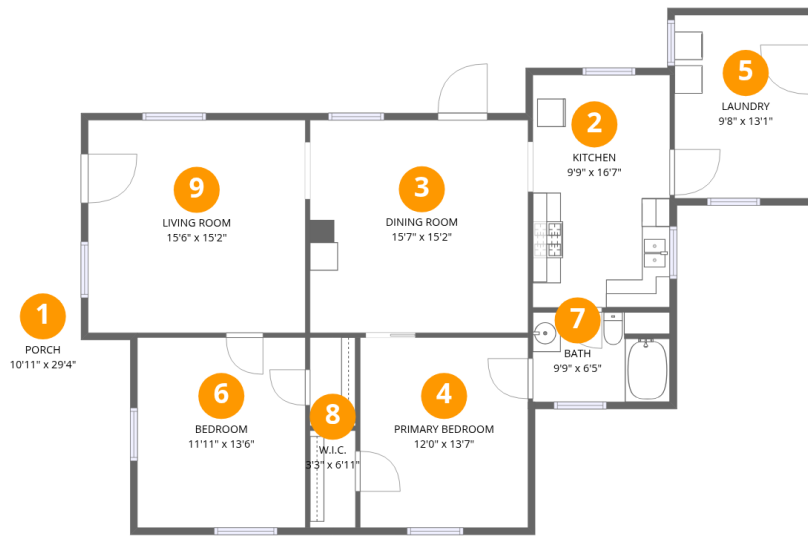
**Total Area: 1224 sq. ft**

1st Floor: 1224 sq. ft

Excluded: Porch 265 sq. ft, Walls: 89 sq. ft

## Property summary





## Room dimensions

Floor 1

Total: 1224sqft Excluded: 265sqft

#		Dimensions	sqft	Counted as living area
1	Porch	10'11" x 29'4"	320 sq. ft	No
2	Kitchen	9'9" x 16'7"	162 sq. ft	Yes
3	Dining Room	15'7" x 15'2"	235 sq. ft	Yes
4	Primary Bedroom	12'0" x 13'7"	162 sq. ft	Yes
5	Laundry	9'8" x 13'1"	126 sq. ft	Yes
6	Bedroom	11'11" x 13'6"	161 sq. ft	Yes
7	Bath	9'9" x 6'5"	62 sq. ft	Yes
8	W.I.C.	3'3" x 6'11"	22 sq. ft	Yes
9	Living Room	15'6" x 15'2"	235 sq. ft	Yes

## 1 Floor 1 - Porch

---

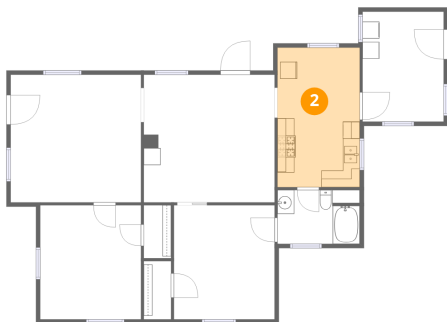


Dimensions: 10'11" x 29'4"  
Area: 320 sq. ft  
Counted as living area: No

Heated: No  
Finished: No  
Enclosed: No  
Contiguous: Yes  
Permitted: Yes  
Wet space: No  
Addition: No  
Conversion: No

## 2 Floor 1 - Kitchen

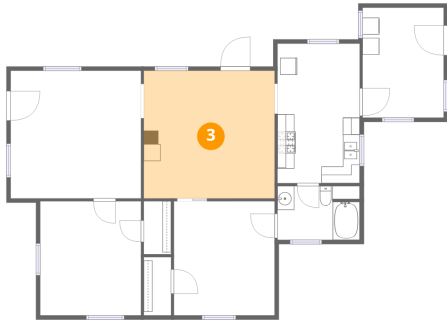
---



Dimensions: 9'9" x 16'7"  
Area: 162 sq. ft  
Counted as living area: Yes

Heated: Yes  
Finished: Yes  
Enclosed: Yes  
Contiguous: Yes  
Permitted: Yes  
Wet space: No  
Addition: No  
Conversion: No

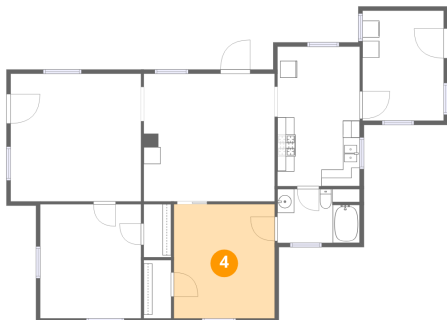
### 3 Floor 1 - Dining Room



Dimensions: 15'7" x 15'2"  
Area: 235 sq. ft  
Counted as living area: Yes

Heated: Yes  
Finished: Yes  
Enclosed: Yes  
Contiguous: Yes  
Permitted: Yes  
Wet space: No  
Addition: No  
Conversion: No

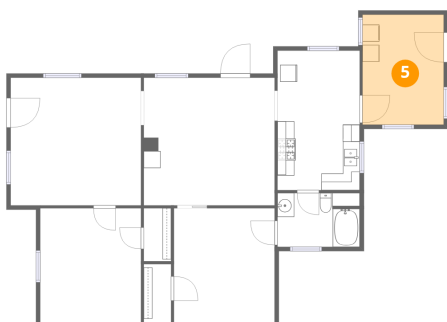
### 4 Floor 1 - Primary Bedroom



Dimensions: 12'0" x 13'7"  
Area: 162 sq. ft  
Counted as living area: Yes

Heated: Yes  
Finished: Yes  
Enclosed: Yes  
Contiguous: Yes  
Permitted: Yes  
Wet space: No  
Addition: No  
Conversion: No

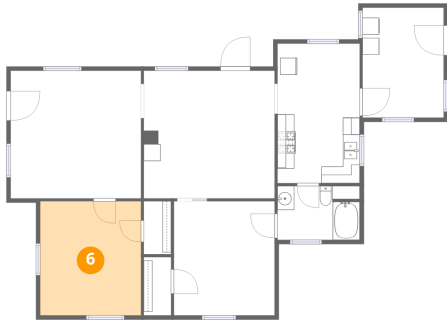
### 5 Floor 1 - Laundry



Dimensions: 9'8" x 13'1"  
Area: 126 sq. ft  
Counted as living area: Yes

Heated: Yes  
Finished: Yes  
Enclosed: Yes  
Contiguous: Yes  
Permitted: Yes  
Wet space: No  
Addition: No  
Conversion: No

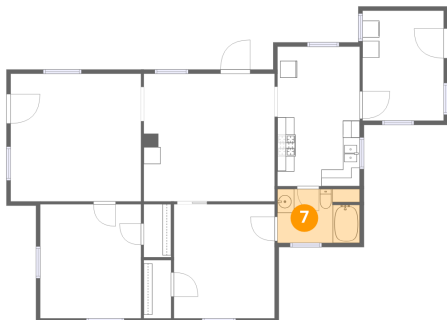
### 6 Floor 1 - Bedroom



Dimensions: 11'11" x 13'6"  
Area: 161 sq. ft  
Counted as living area: Yes

Heated: Yes  
Finished: Yes  
Enclosed: Yes  
Contiguous: Yes  
Permitted: Yes  
Wet space: No  
Addition: No  
Conversion: No

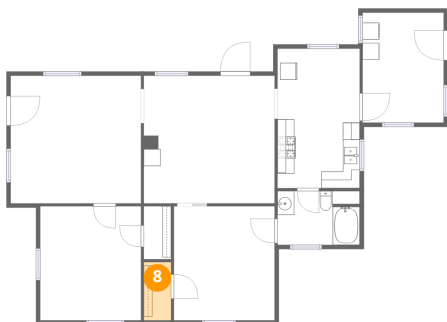
### 7 Floor 1 - Bath



Dimensions: 9'9" x 6'5"  
Area: 62 sq. ft  
Counted as living area: Yes

Heated: Yes  
Finished: Yes  
Enclosed: Yes  
Contiguous: Yes  
Permitted: Yes  
Wet space: Yes  
Addition: No  
Conversion: No

### 8 Floor 1 - W.I.C.

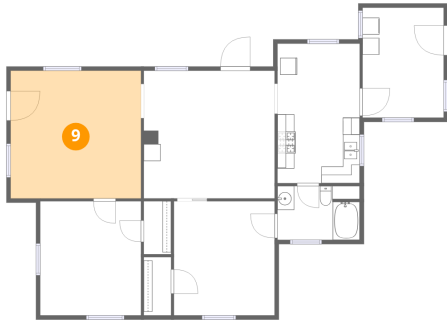


Dimensions: 3'3" x 6'11"  
Area: 22 sq. ft  
Counted as living area: Yes

Heated: Yes  
Finished: Yes  
Enclosed: Yes  
Contiguous: Yes  
Permitted: Yes  
Wet space: No  
Addition: No  
Conversion: No

**9** Floor 1 - Living Room

---



**Dimensions:** 15'6" x 15'2"  
**Area:** 235 sq. ft  
**Counted as living area:** Yes

**Heated:** Yes  
**Finished:** Yes  
**Enclosed:** Yes  
**Contiguous:** Yes  
**Permitted:** Yes  
**Wet space:** No  
**Addition:** No  
**Conversion:** No