

## Home data report

**4421 South County Road 13, Loveland, Larimer County,  
Colorado, United States, 80537**



**Total Area: 3260 sq. ft**

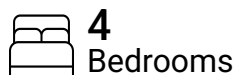
Basement: 37 sq. ft, 1st Floor: 3223 sq. ft

Excluded: Storage 60 sq. ft, Basement 2740 sq. ft, Room 474 sq. ft, Garage 685 sq. ft,  
Embedded window 23 sq. ft, Walls: 314 sq. ft

## Property summary



**2**  
Floors



**4**  
Bedrooms



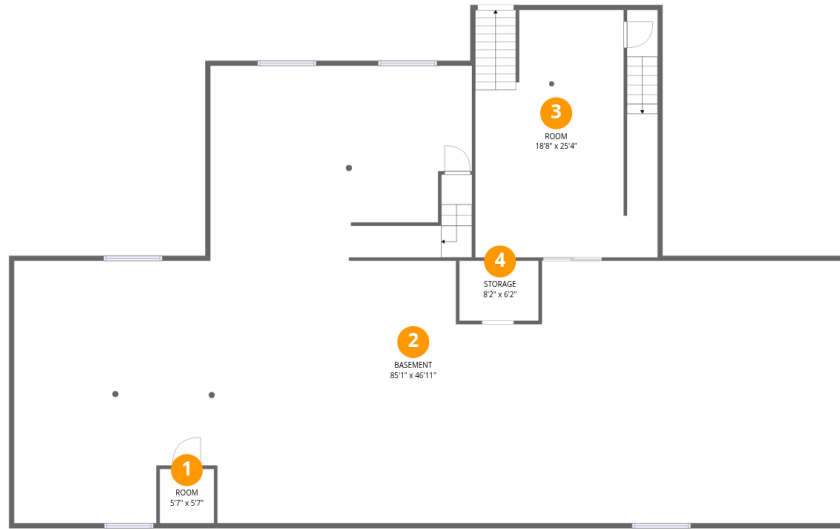
**3**  
Bathrooms



**1**  
Garages

Home data report

4421 South County Road 13, Loveland, Larimer County, Colorado, United States, 80537



### Room dimensions

Floor 1 Below grade

Total:37sqft

Excluded: 3274sqft

#		Dimensions	sqft	Counted as living area
1	Room	5'7" x 5'7"	31 sq. ft	Yes
2	Basement	85'1" x 46'11"	3987 sq. ft	No
3	Room	18'8" x 25'4"	472 sq. ft	No
4	Storage	8'2" x 6'2"	50 sq. ft	No

Home data report

4421 South County Road 13, Loveland, Larimer County, Colorado, United States, 80537



## Room dimensions

Floor 2

Total:3223sqft

Excluded: 708sqft

#		Dimensions	sqft	Counted as living area
5	Primary Bath	13'5" x 11'5"	153 sq. ft	Yes
6	Bedroom	10'1" x 13'0"	131 sq. ft	Yes
7	Hall	3'11" x 9'3"	36 sq. ft	Yes
8	Family Room	26'11" x 19'7"	528 sq. ft	Yes
9	Bath	5'0" x 10'3"	51 sq. ft	Yes
10	Sitting Room	12'11" x 13'11"	180 sq. ft	Yes
11	Dining Area	13'5" x 13'0"	174 sq. ft	Yes
12	Laundry	7'2" x 9'3"	66 sq. ft	Yes
13	W.I.C.	6'0" x 11'5"	68 sq. ft	Yes
14	Living Room	13'3" x 13'11"	184 sq. ft	Yes
15	Office	18'8" x 17'8"	330 sq. ft	Yes

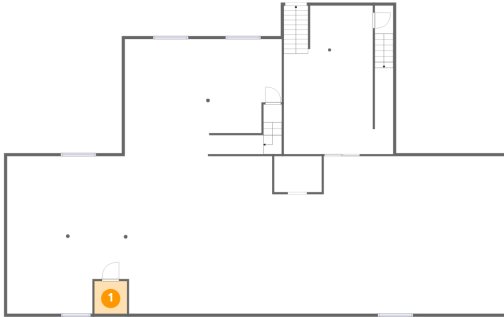
Home data report

**4421 South County Road 13, Loveland, Larimer County,  
Colorado, United States, 80537**

#		Dimensions	sqft	Counted as living area
16	Bedroom	10'8" x 13'7"	145 sq. ft	Yes
17	Hall	8'0" x 5'2"	41 sq. ft	Yes
18	Garage	22'7" x 30'3"	684 sq. ft	No
19	Kitchen	18'0" x 13'0"	234 sq. ft	Yes
20	Foyer	7'8" x 7'5"	57 sq. ft	Yes
21	Pantry	7'4" x 8'1"	59 sq. ft	Yes
22	Hall	23'1" x 3'5"	79 sq. ft	Yes
23	Primary Bedroom	19'9" x 15'2"	300 sq. ft	Yes
24	Bath	4'10" x 9'3"	45 sq. ft	Yes
25	Bedroom	10'5" x 13'7"	141 sq. ft	Yes

# 4421 South County Road 13, Loveland, Larimer County, Colorado, United States, 80537

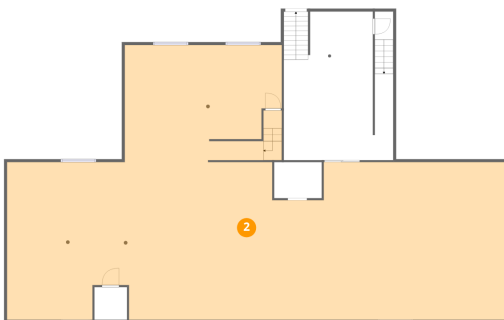
## 1 Floor 1 - Room



Dimensions: 5'7" x 5'7"  
Area: 31 sq. ft  
Counted as living area: No

Heated: Yes  
Finished: Yes  
Enclosed: Yes  
Contiguous: No  
Permitted: Yes  
Wet space: No  
Addition: No  
Conversion: No

## 2 Floor 1 - Basement

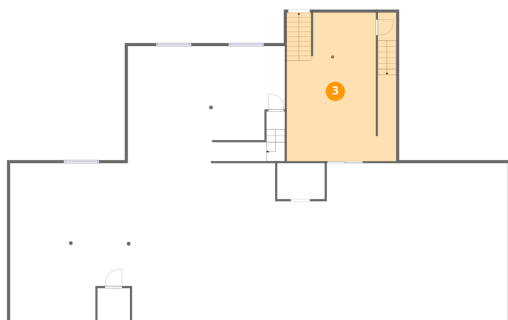


Dimensions: 85'1" x 46'11"  
Area: 3987 sq. ft  
Counted as living area: No

Heated: Yes  
Finished: No  
Enclosed: Yes  
Contiguous: Yes  
Permitted: Yes  
Wet space: No  
Addition: No  
Conversion: No

4421 South County Road 13, Loveland, Larimer County, Colorado, United States, 80537

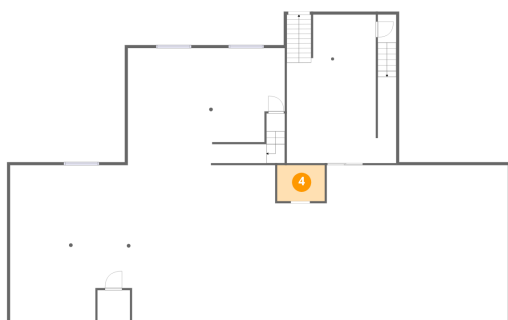
**3** Floor 1 - Room



Dimensions: 18'8" x 25'4"  
Area: 472 sq. ft  
Counted as living area: No

Heated: Yes  
Finished: No  
Enclosed: Yes  
Contiguous: Yes  
Permitted: Yes  
Wet space: No  
Addition: No  
Conversion: No

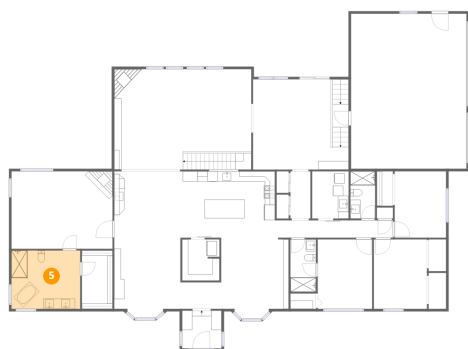
**4** Floor 1 - Storage



Dimensions: 8'2" x 6'2"  
Area: 50 sq. ft  
Counted as living area: No

Heated: No  
Finished: No  
Enclosed: No  
Contiguous: Yes  
Permitted: Yes  
Wet space: No  
Addition: No  
Conversion: No

**5** Floor 2 - Primary Bath

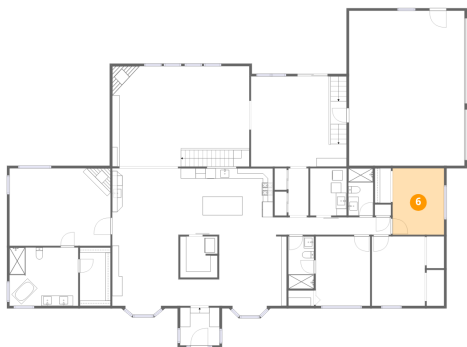


Dimensions: 13'5" x 11'5"  
Area: 153 sq. ft  
Counted as living area: Yes

Heated: Yes  
Finished: Yes  
Enclosed: Yes  
Contiguous: Yes  
Permitted: Yes  
Wet space: Yes  
Addition: No  
Conversion: No

# 4421 South County Road 13, Loveland, Larimer County, Colorado, United States, 80537

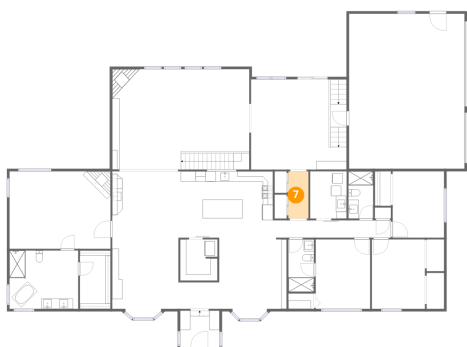
## 6 Floor 2 - Bedroom



Dimensions: 10'1" x 13'0"  
Area: 131 sq. ft  
Counted as living area: Yes

Heated: Yes  
Finished: Yes  
Enclosed: Yes  
Contiguous: Yes  
Permitted: Yes  
Wet space: No  
Addition: No  
Conversion: No

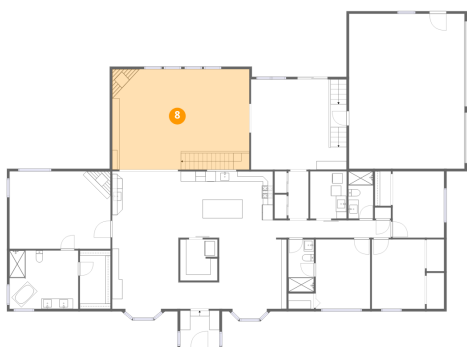
## 7 Floor 2 - Hall



Dimensions: 3'11" x 9'3"  
Area: 36 sq. ft  
Counted as living area: Yes

Heated: Yes  
Finished: Yes  
Enclosed: Yes  
Contiguous: Yes  
Permitted: Yes  
Wet space: No  
Addition: No  
Conversion: No

## 8 Floor 2 - Family Room



Dimensions: 26'11" x 19'7"  
Area: 528 sq. ft  
Counted as living area: Yes

Heated: Yes  
Finished: Yes  
Enclosed: Yes  
Contiguous: Yes  
Permitted: Yes  
Wet space: No  
Addition: No  
Conversion: No

4421 South County Road 13, Loveland, Larimer County,  
Colorado, United States, 80537

**9** Floor 2 - Bath



Dimensions: 5'0" x 10'3"  
Area: 51 sq. ft  
Counted as living area: Yes

Heated: Yes  
Finished: Yes  
Enclosed: Yes  
Contiguous: Yes  
Permitted: Yes  
Wet space: Yes  
Addition: No  
Conversion: No

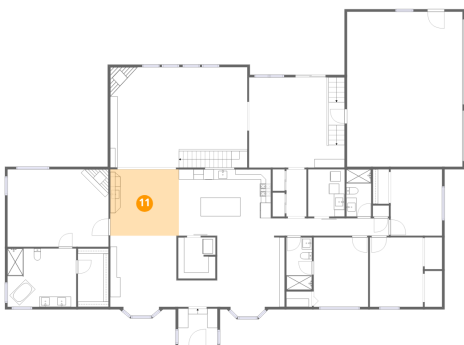
**10** Floor 2 - Sitting Room



Dimensions: 12'11" x 13'11"  
Area: 180 sq. ft  
Counted as living area: Yes

Heated: Yes  
Finished: Yes  
Enclosed: Yes  
Contiguous: Yes  
Permitted: Yes  
Wet space: No  
Addition: No  
Conversion: No

**11** Floor 2 - Dining Area

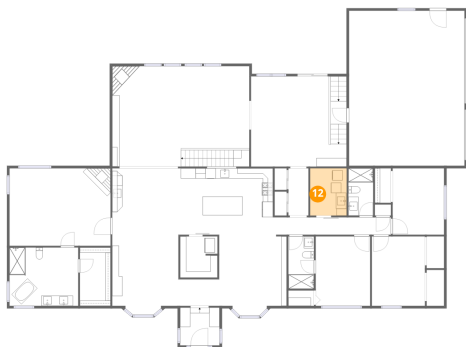


Dimensions: 13'5" x 13'0"  
Area: 174 sq. ft  
Counted as living area: Yes

Heated: Yes  
Finished: Yes  
Enclosed: Yes  
Contiguous: Yes  
Permitted: Yes  
Wet space: No  
Addition: No  
Conversion: No

4421 South County Road 13, Loveland, Larimer County, Colorado, United States, 80537

**12** Floor 2 - Laundry



Dimensions: 7'2" x 9'3"  
Area: 66 sq. ft  
Counted as living area: Yes

Heated: Yes  
Finished: Yes  
Enclosed: Yes  
Contiguous: Yes  
Permitted: Yes  
Wet space: No  
Addition: No  
Conversion: No

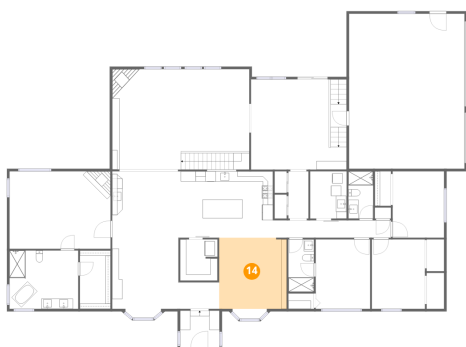
**13** Floor 2 - W.I.C.



Dimensions: 6'0" x 11'5"  
Area: 68 sq. ft  
Counted as living area: Yes

Heated: Yes  
Finished: Yes  
Enclosed: Yes  
Contiguous: Yes  
Permitted: Yes  
Wet space: No  
Addition: No  
Conversion: No

**14** Floor 2 - Living Room



Dimensions: 13'3" x 13'11"  
Area: 184 sq. ft  
Counted as living area: Yes

Heated: Yes  
Finished: Yes  
Enclosed: Yes  
Contiguous: Yes  
Permitted: Yes  
Wet space: No  
Addition: No  
Conversion: No

4421 South County Road 13, Loveland, Larimer County,  
Colorado, United States, 80537

**15** Floor 2 - Office



Dimensions: 18'8" x 17'8"  
Area: 330 sq. ft  
Counted as living area: Yes

Heated: Yes  
Finished: Yes  
Enclosed: Yes  
Contiguous: Yes  
Permitted: Yes  
Wet space: No  
Addition: No  
Conversion: No

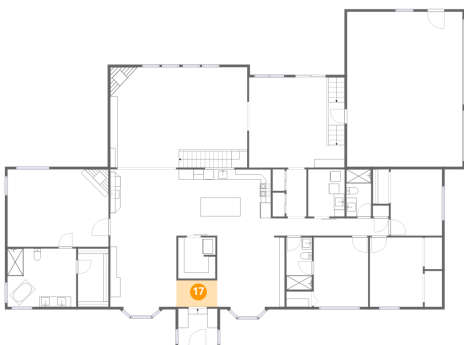
**16** Floor 2 - Bedroom



Dimensions: 10'8" x 13'7"  
Area: 145 sq. ft  
Counted as living area: Yes

Heated: Yes  
Finished: Yes  
Enclosed: Yes  
Contiguous: Yes  
Permitted: Yes  
Wet space: No  
Addition: No  
Conversion: No

**17** Floor 2 - Hall



Dimensions: 8'0" x 5'2"  
Area: 41 sq. ft  
Counted as living area: Yes

Heated: Yes  
Finished: Yes  
Enclosed: Yes  
Contiguous: Yes  
Permitted: Yes  
Wet space: No  
Addition: No  
Conversion: No

4421 South County Road 13, Loveland, Larimer County,  
Colorado, United States, 80537

**18** Floor 2 - Garage



Dimensions: 22'7" x 30'3"  
Area: 684 sq. ft  
Counted as living area: No

Heated: No  
Finished: No  
Enclosed: Yes  
Contiguous: Yes  
Permitted: Yes  
Wet space: No  
Addition: No  
Conversion: No

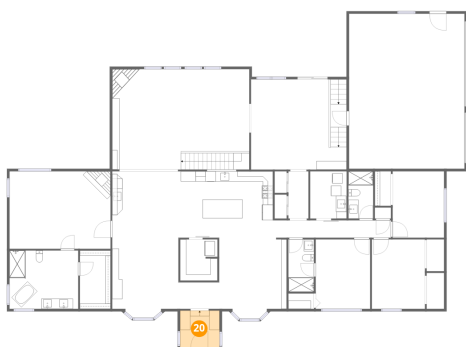
**19** Floor 2 - Kitchen



Dimensions: 18'0" x 13'0"  
Area: 234 sq. ft  
Counted as living area: Yes

Heated: Yes  
Finished: Yes  
Enclosed: Yes  
Contiguous: Yes  
Permitted: Yes  
Wet space: No  
Addition: No  
Conversion: No

**20** Floor 2 - Foyer



Dimensions: 7'8" x 7'5"  
Area: 57 sq. ft  
Counted as living area: Yes

Heated: Yes  
Finished: Yes  
Enclosed: Yes  
Contiguous: Yes  
Permitted: Yes  
Wet space: No  
Addition: No  
Conversion: No

4421 South County Road 13, Loveland, Larimer County,  
Colorado, United States, 80537

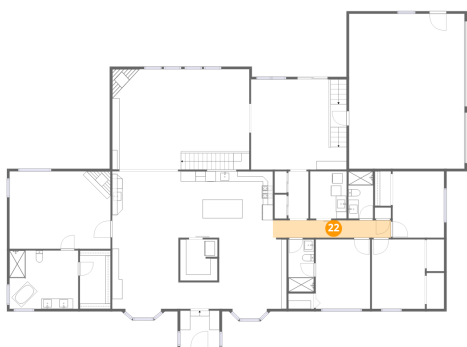
**21** Floor 2 - Pantry



Dimensions: 7'4" x 8'1"  
Area: 59 sq. ft  
Counted as living area: Yes

Heated: Yes  
Finished: Yes  
Enclosed: Yes  
Contiguous: Yes  
Permitted: Yes  
Wet space: No  
Addition: No  
Conversion: No

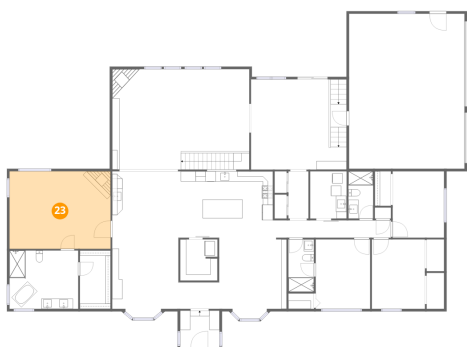
**22** Floor 2 - Hall



Dimensions: 23'1" x 3'5"  
Area: 79 sq. ft  
Counted as living area: Yes

Heated: Yes  
Finished: Yes  
Enclosed: Yes  
Contiguous: Yes  
Permitted: Yes  
Wet space: No  
Addition: No  
Conversion: No

**23** Floor 2 - Primary Bedroom



Dimensions: 19'9" x 15'2"  
Area: 300 sq. ft  
Counted as living area: Yes

Heated: Yes  
Finished: Yes  
Enclosed: Yes  
Contiguous: Yes  
Permitted: Yes  
Wet space: No  
Addition: No  
Conversion: No

**4421 South County Road 13, Loveland, Larimer County,  
Colorado, United States, 80537**

**24 Floor 2 - Bath**

---



**Dimensions:** 4'10" x 9'3"  
**Area:** 45 sq. ft  
**Counted as living area:** Yes

**Heated:** Yes  
**Finished:** Yes  
**Enclosed:** Yes  
**Contiguous:** Yes  
**Permitted:** Yes  
**Wet space:** Yes  
**Addition:** No  
**Conversion:** No

**25 Floor 2 - Bedroom**

---



**Dimensions:** 10'5" x 13'7"  
**Area:** 141 sq. ft  
**Counted as living area:** Yes

**Heated:** Yes  
**Finished:** Yes  
**Enclosed:** Yes  
**Contiguous:** Yes  
**Permitted:** Yes  
**Wet space:** No  
**Addition:** No  
**Conversion:** No